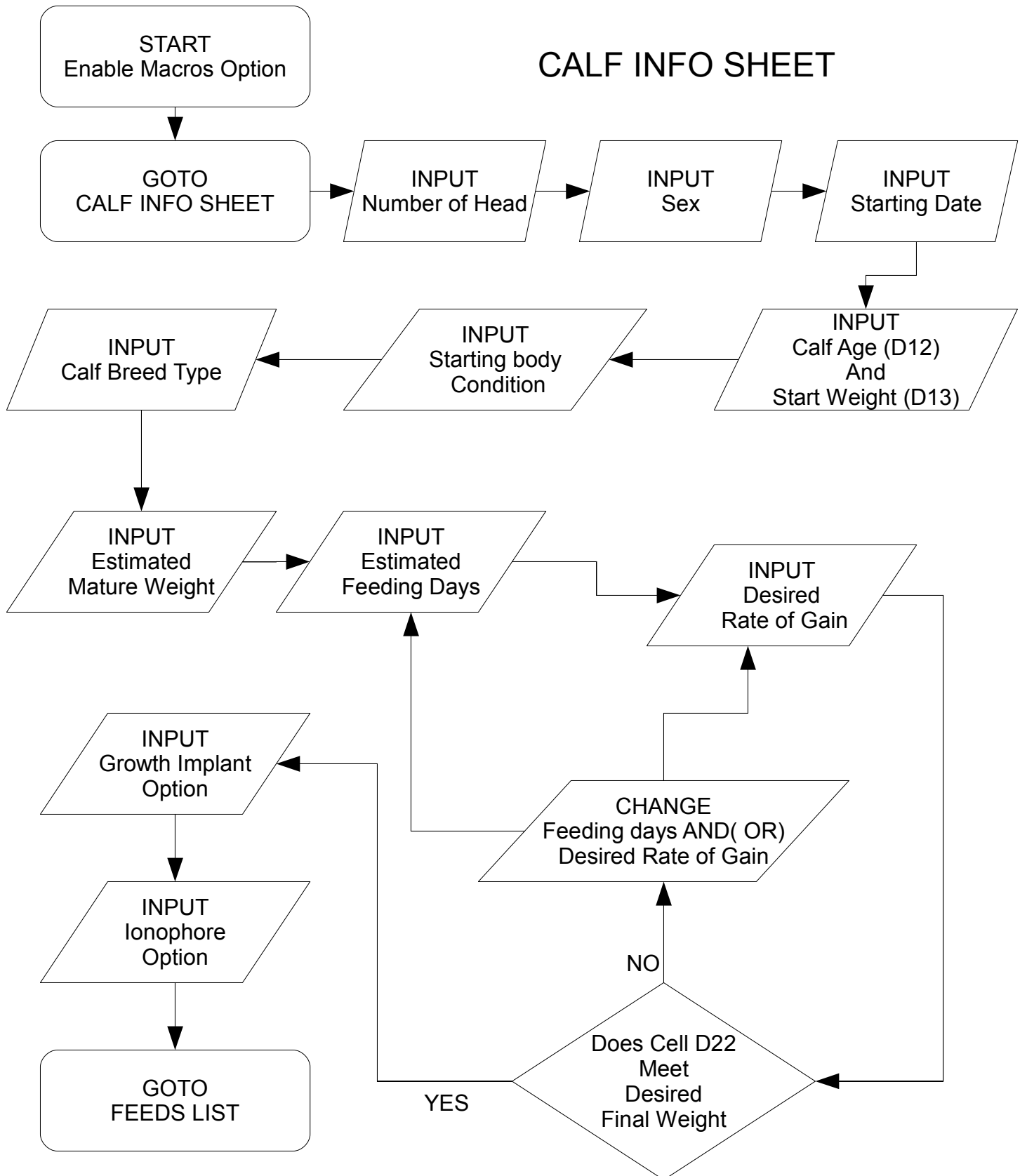
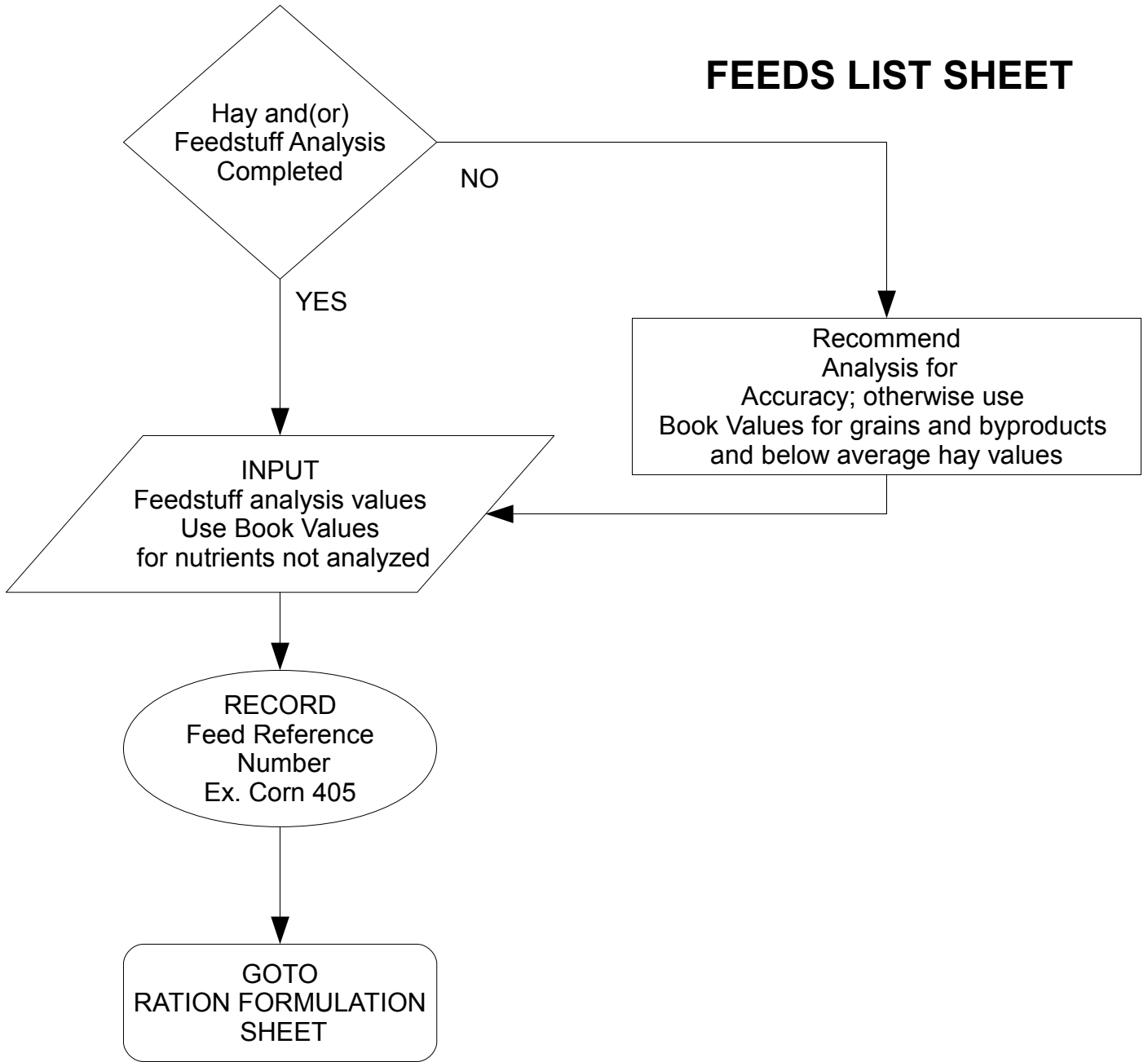


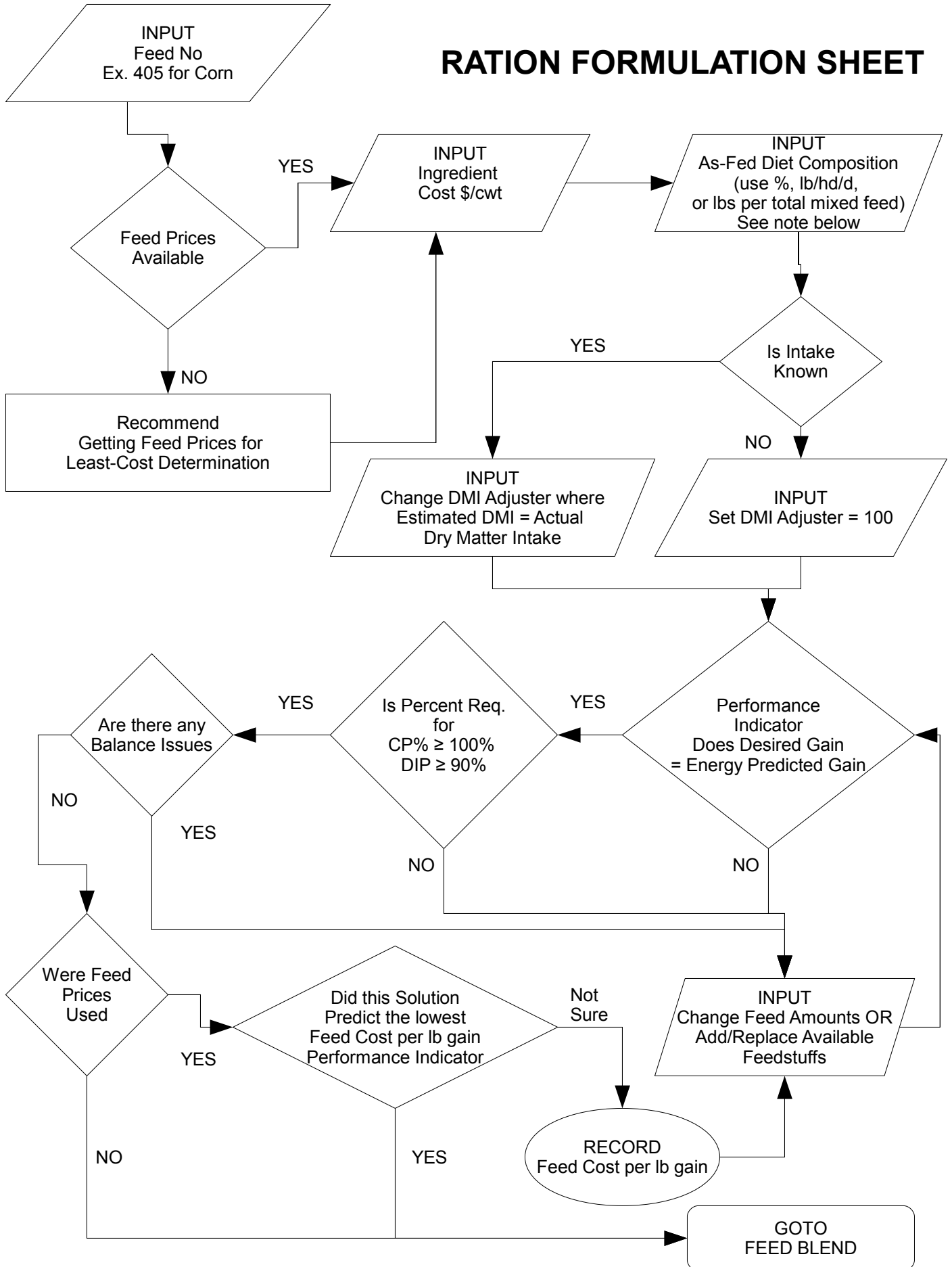
GROWER RATION BALANCER FLOWCHART



FEEDS LIST SHEET

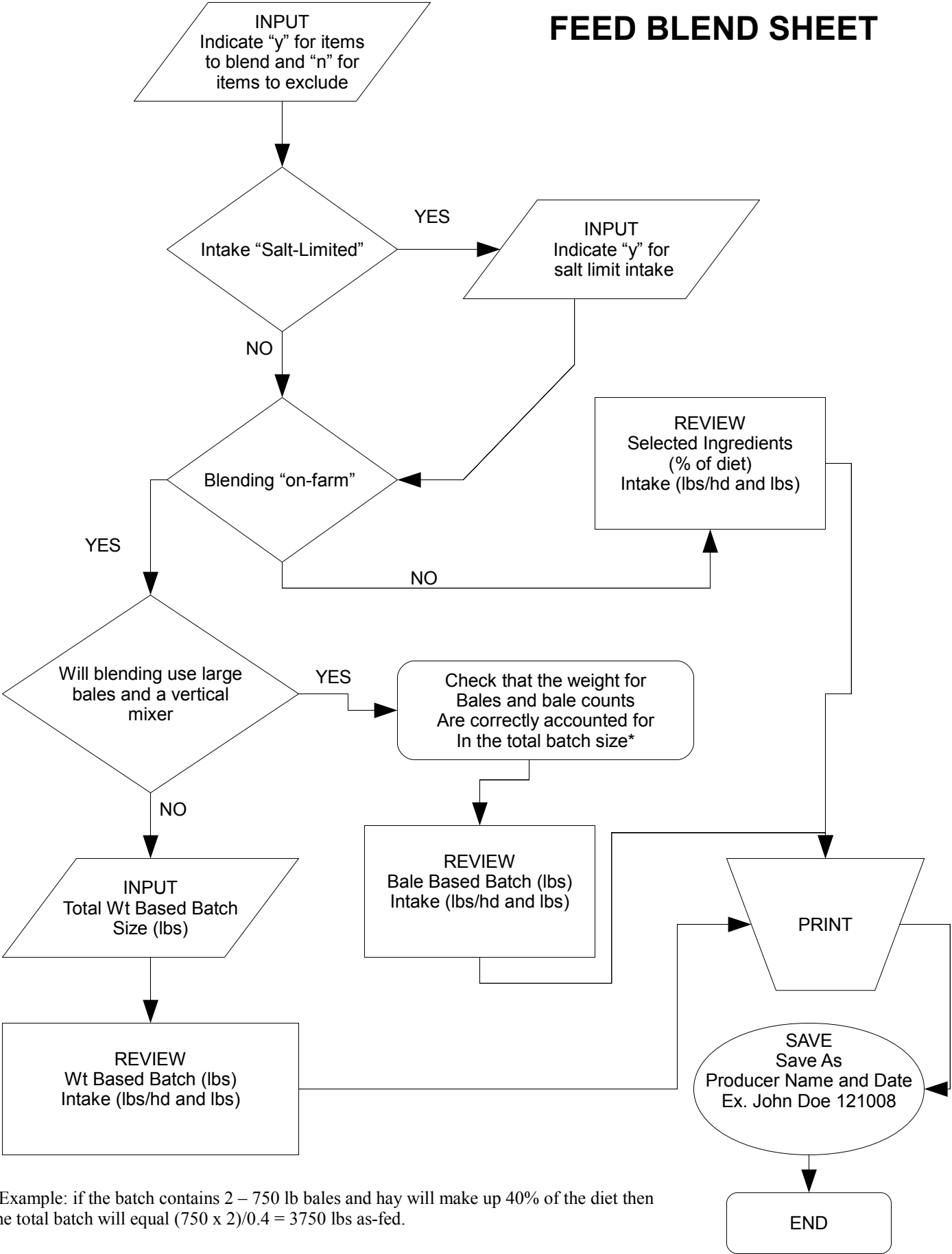


RATION FORMULATION SHEET



If using lbs/hd/d, dry matter total must = estimated DMI

FEED BLEND SHEET



*Example: if the batch contains 2 – 750 lb bales and hay will make up 40% of the diet then the total batch will equal $(750 \times 2)/0.4 = 3750$ lbs as-fed.