

U.S. Rice Supply and Demand Estimates
Slide Show
September 10, 2010

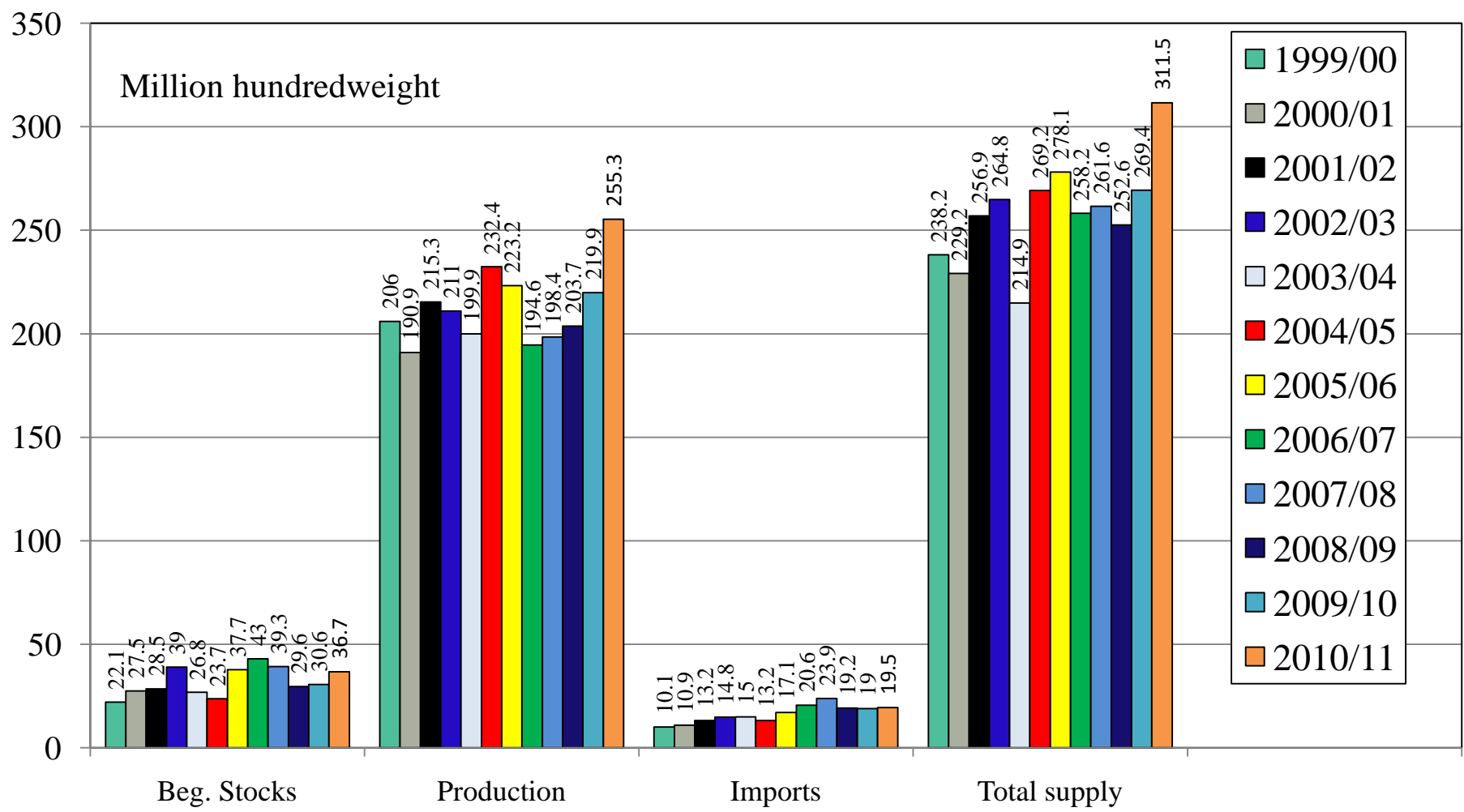
By

Robert Coats, Ph.D.

Extension Economist and Professor - Economics
Department of Agricultural Economics and Agribusiness
Division of Agriculture
University of Arkansas

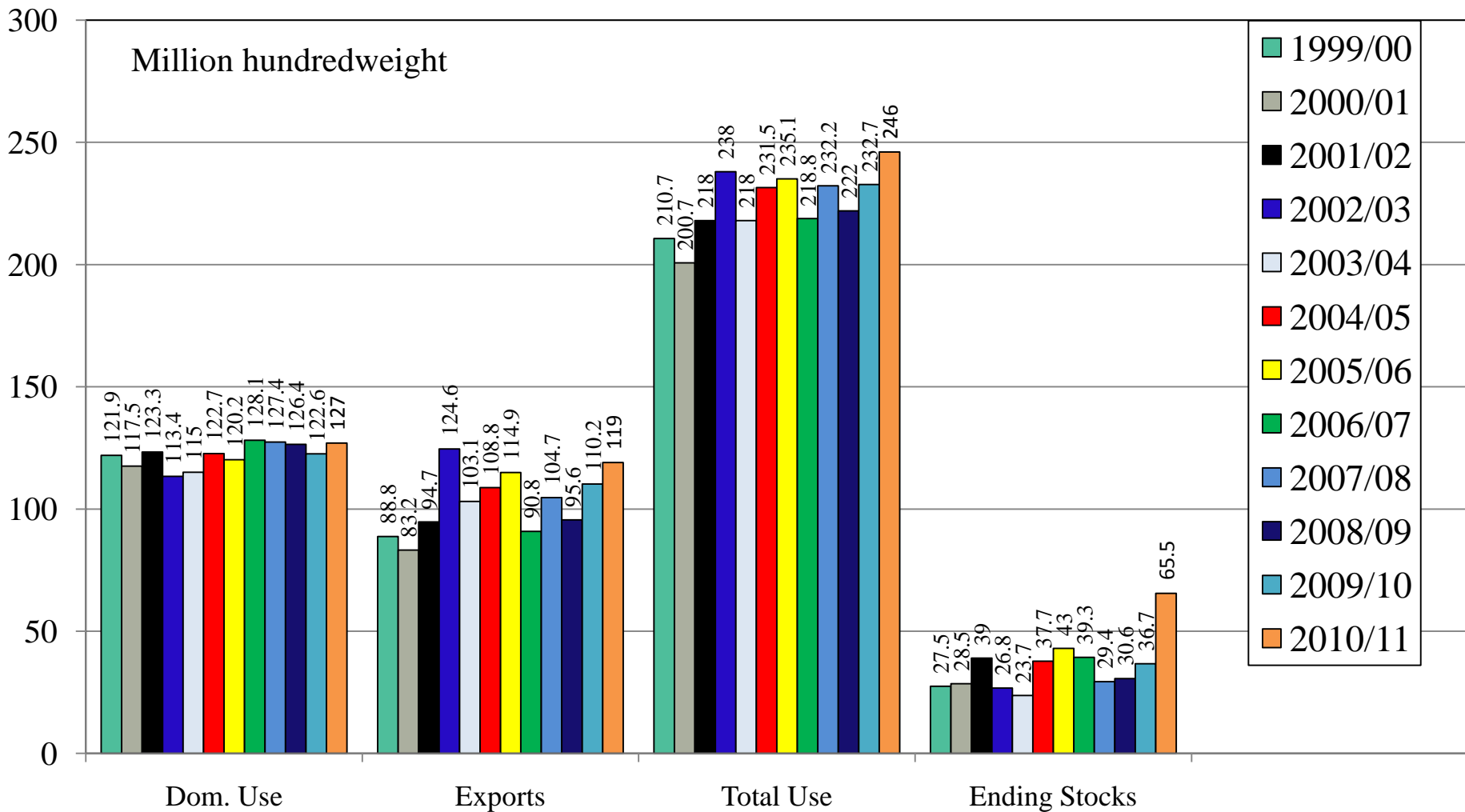
U.S. All Rice Supply 1999/00 – 2010/11

Average Farm Price (\$/cwt): 2008/09 \$16.80, 2009/10 \$14.00, 2010/11 \$10.30-\$11.30



U.S. All Rice

Use and Ending Stocks 1999/00 – 2010/11

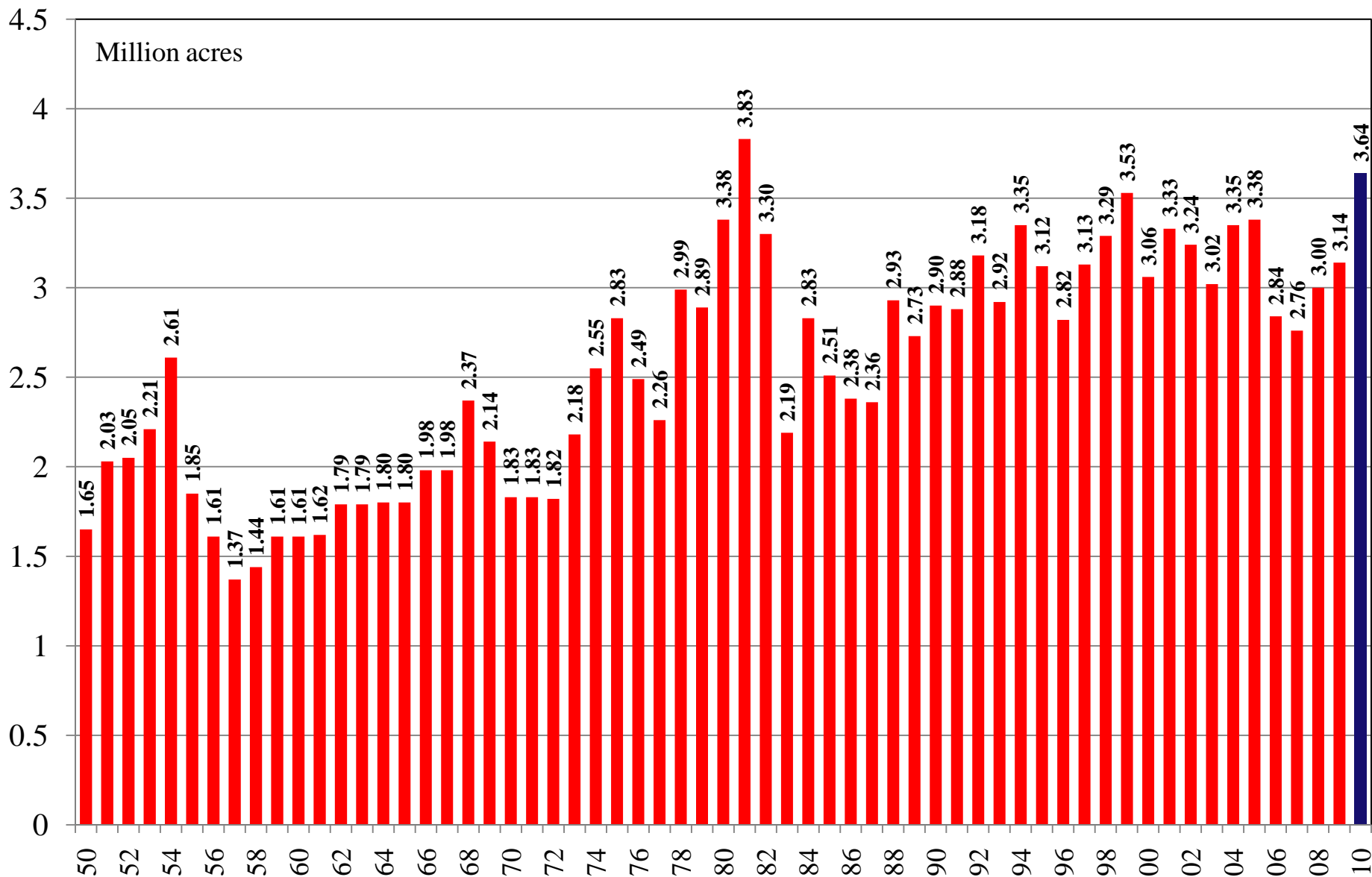


U.S. All Rice

Supply and Demand Estimates

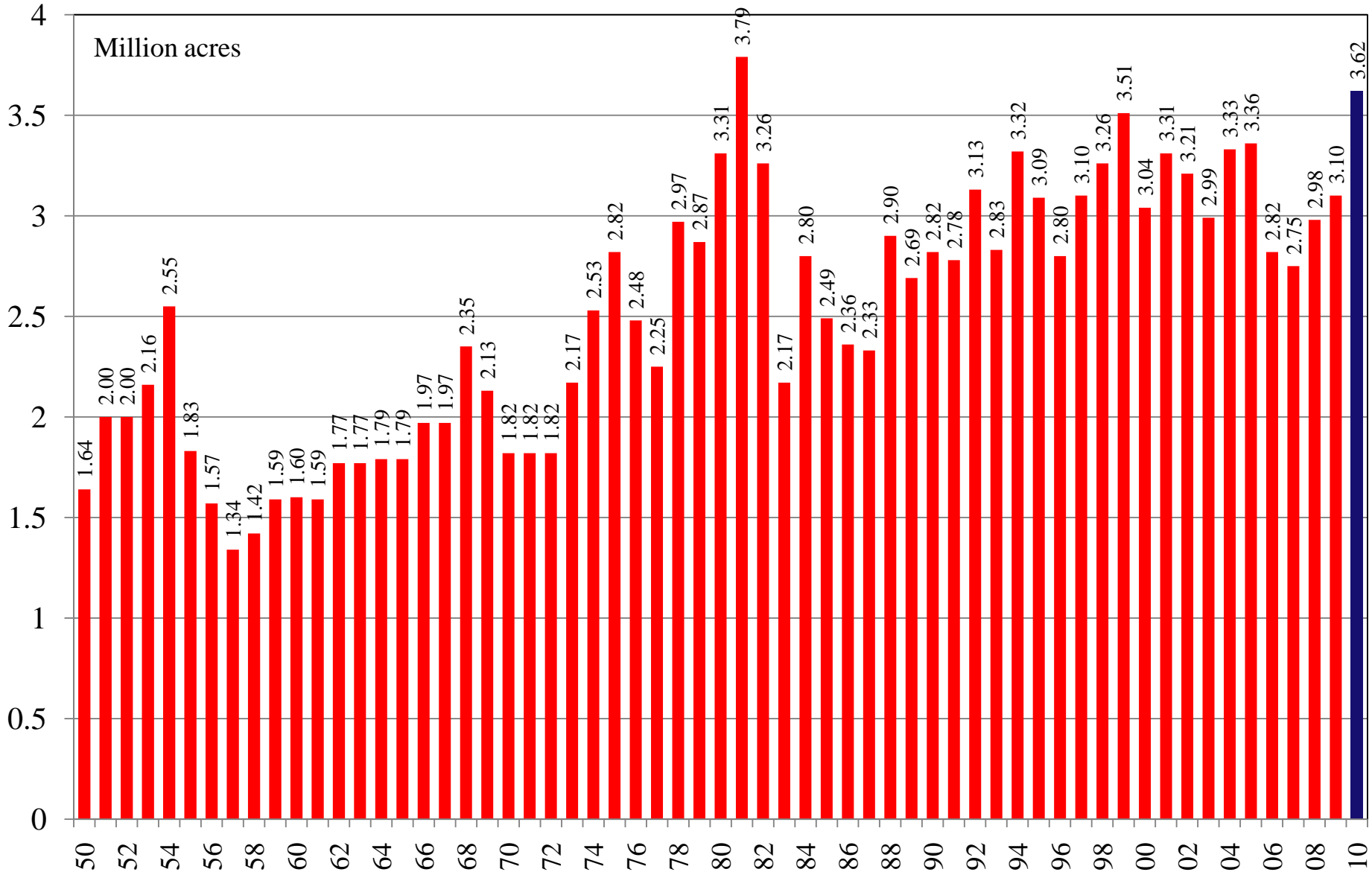
September 10, 2010

U.S. All Rice Planted Acres 1950/51 – 2010/11



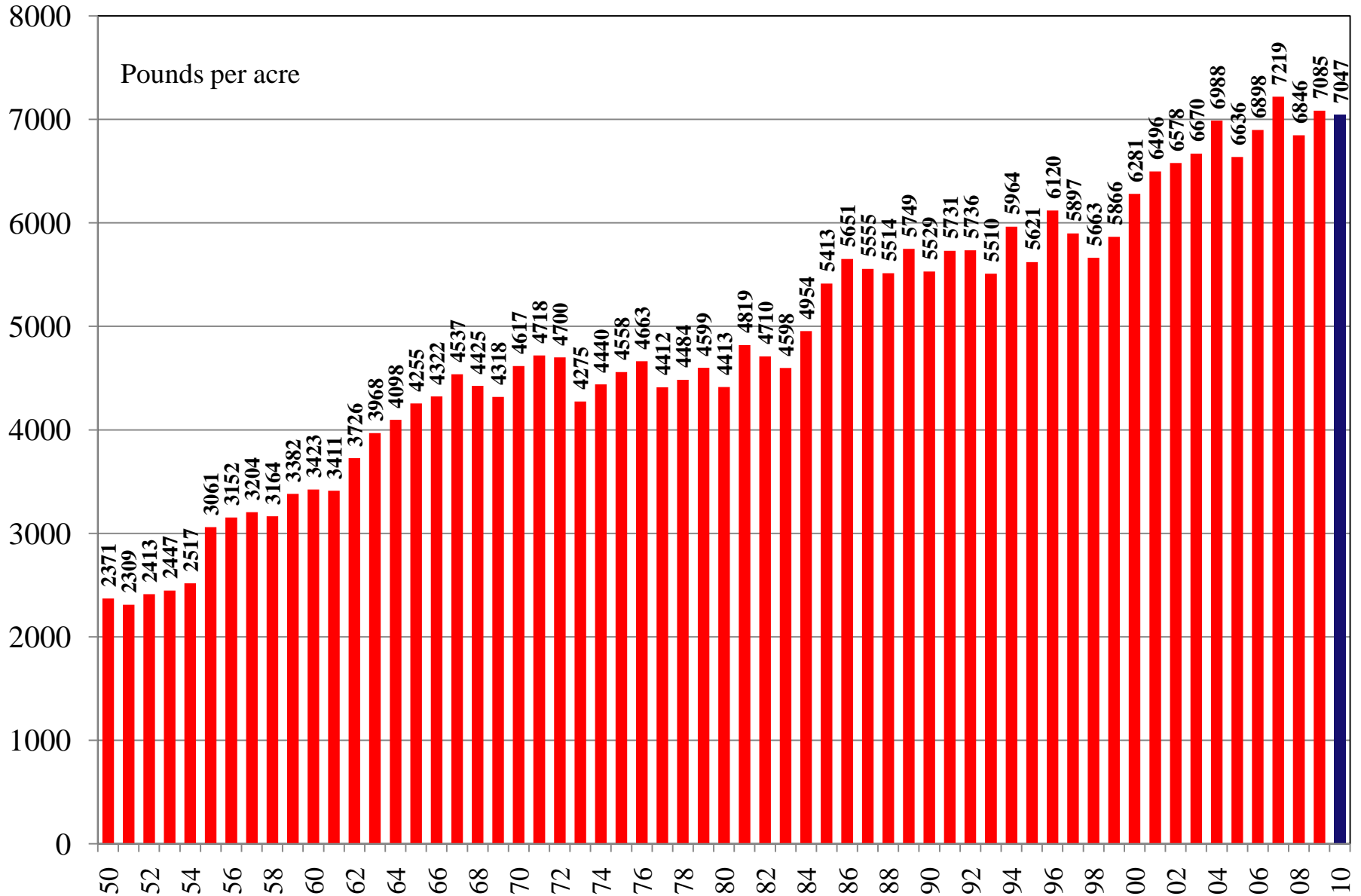
Source: [USDA World Supply and Demand Estimates](#) and [Rice Yearbook](#)

U.S. All Rice Harvested Acres 1950/51 – 2010/11



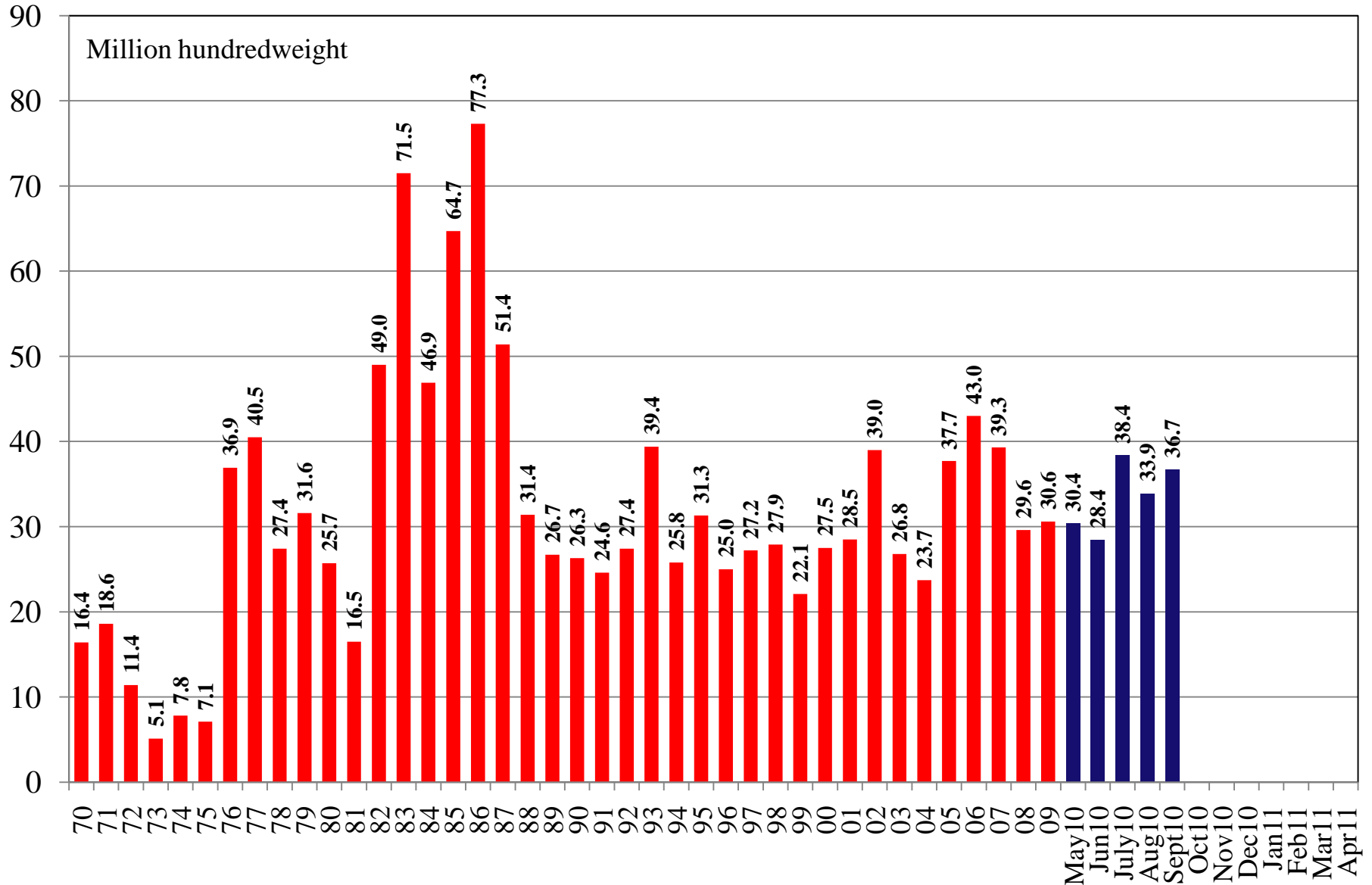
Source: [USDA World Supply and Demand Estimates](#) and [Rice Yearbook](#)

U.S. All Rice Yield 1950/51 – 2010/11



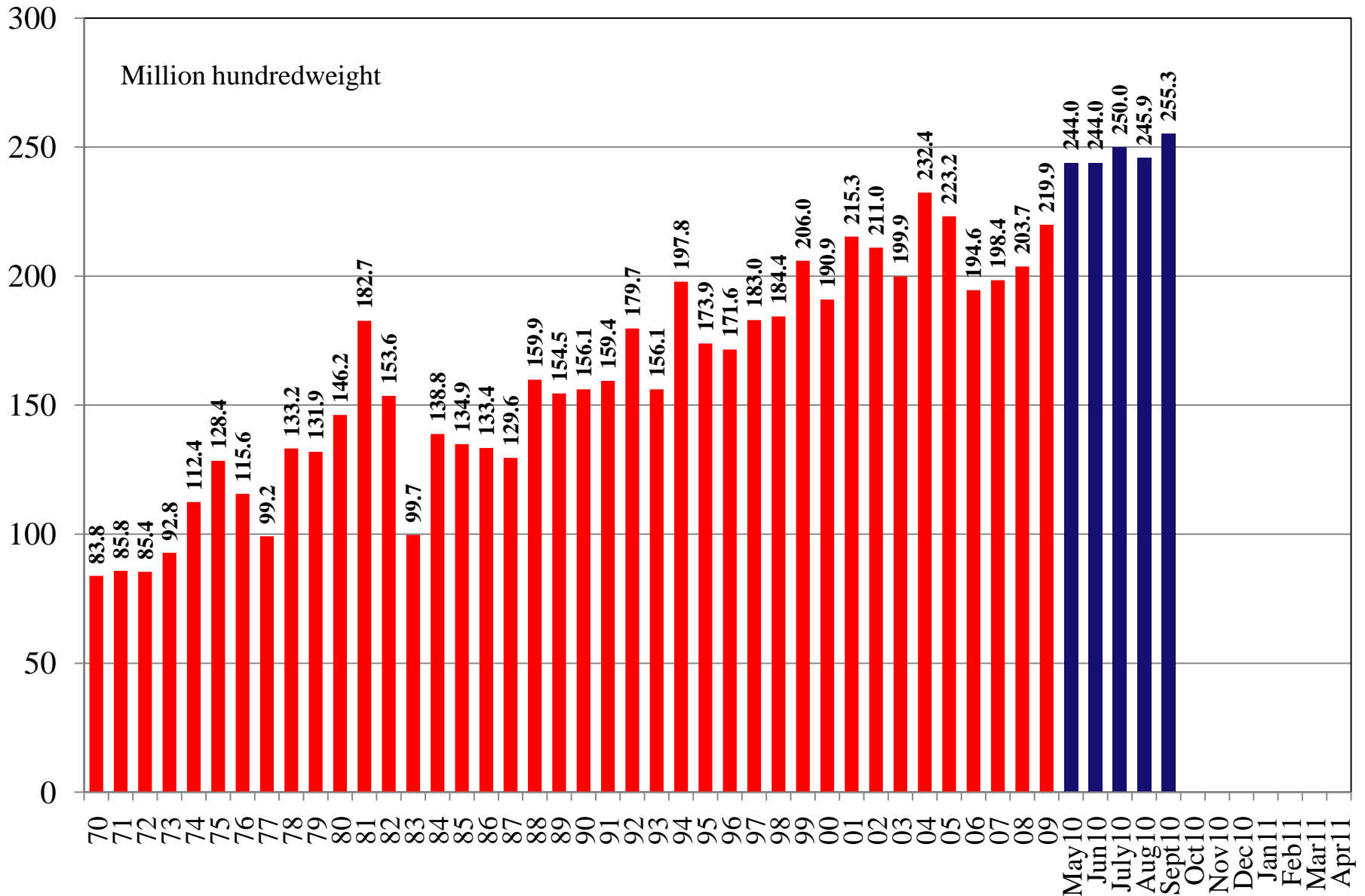
Source: [USDA World Supply and Demand Estimates](#) and [Rice Yearbook](#)

U.S. All Rice Beginning Stocks 1970/71 – 2010/11



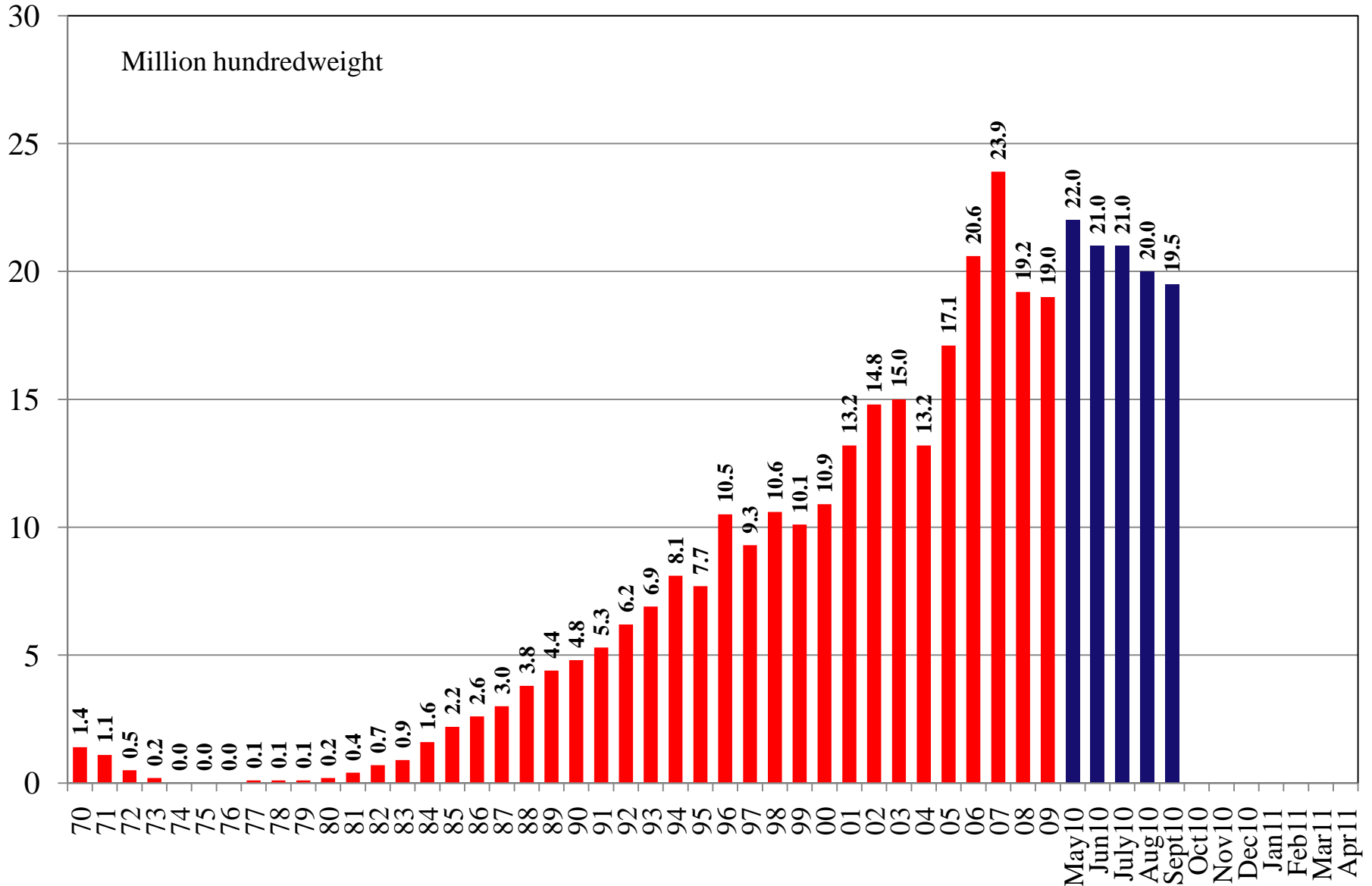
Source: [USDA World Supply and Demand Estimates](#) and [Rice Yearbook](#)

U.S. All Rice Production 1970/71 – 2010/11



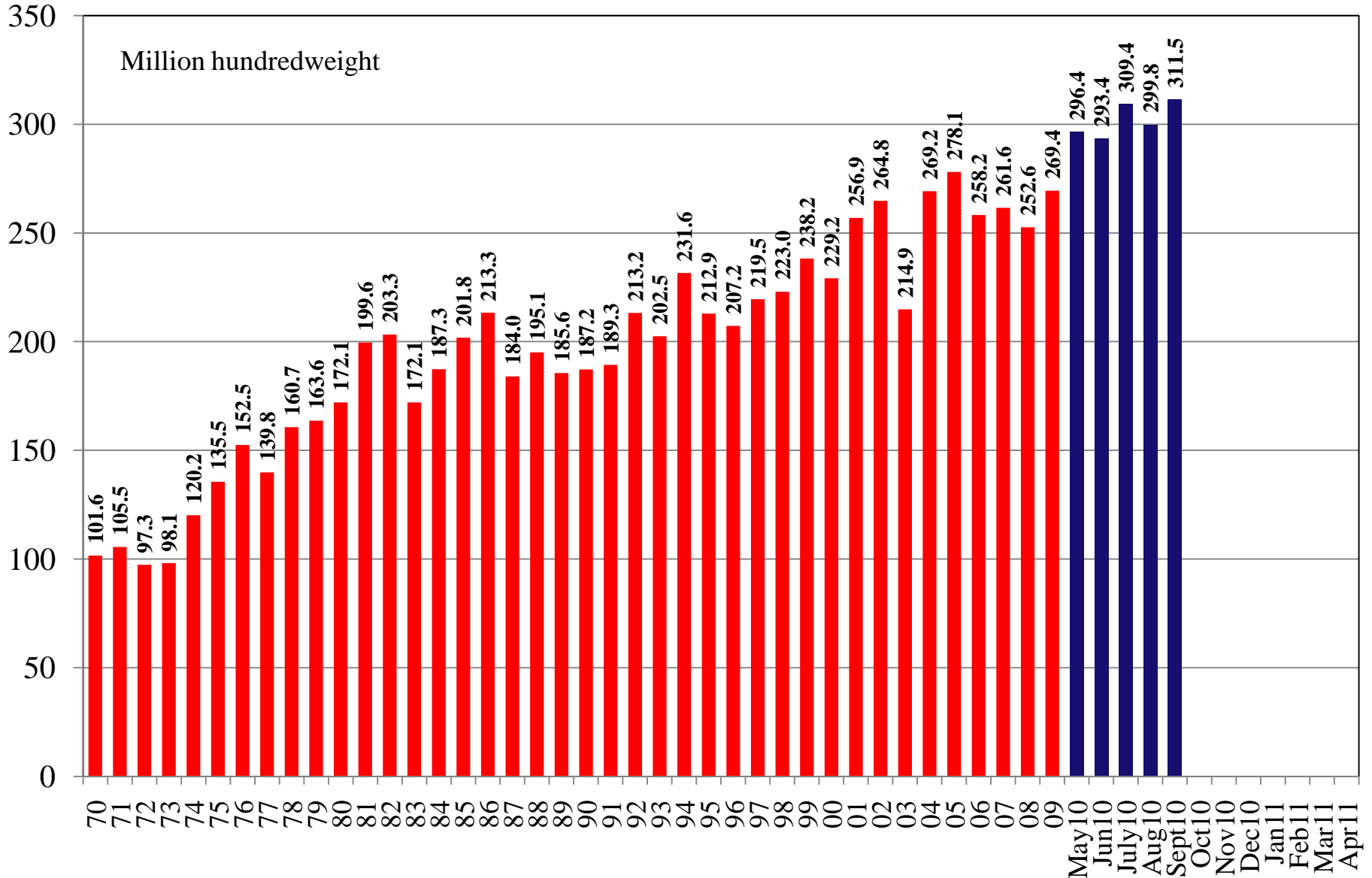
Source: [USDA World Supply and Demand Estimates](#) and [Rice Yearbook](#)

U.S. All Rice Imports 1970/71 – 2010/11



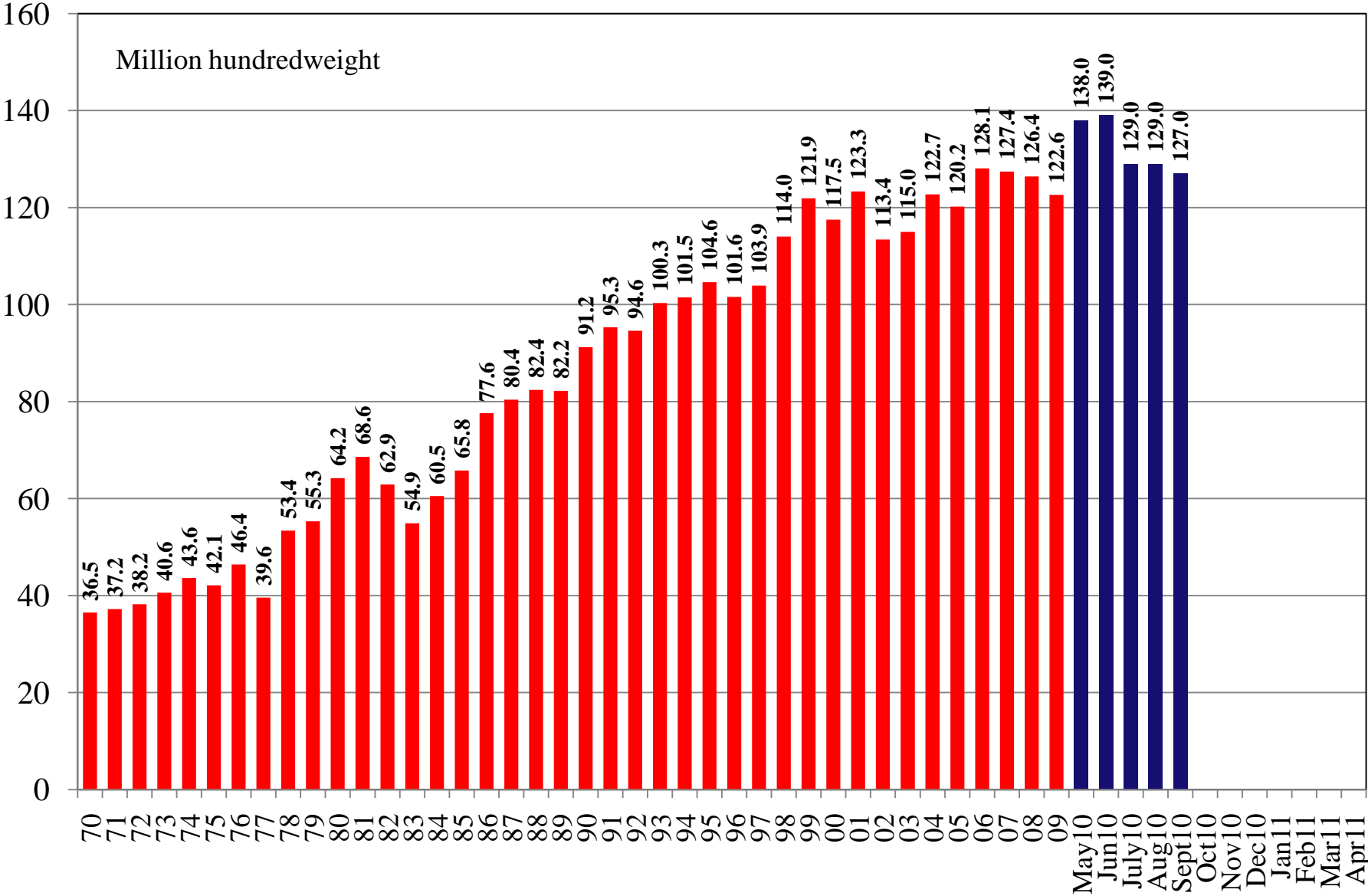
Source: [USDA World Supply and Demand Estimates](#) and [Rice Yearbook](#)

U.S. All Rice Total Supply 1970/71 – 2010/11



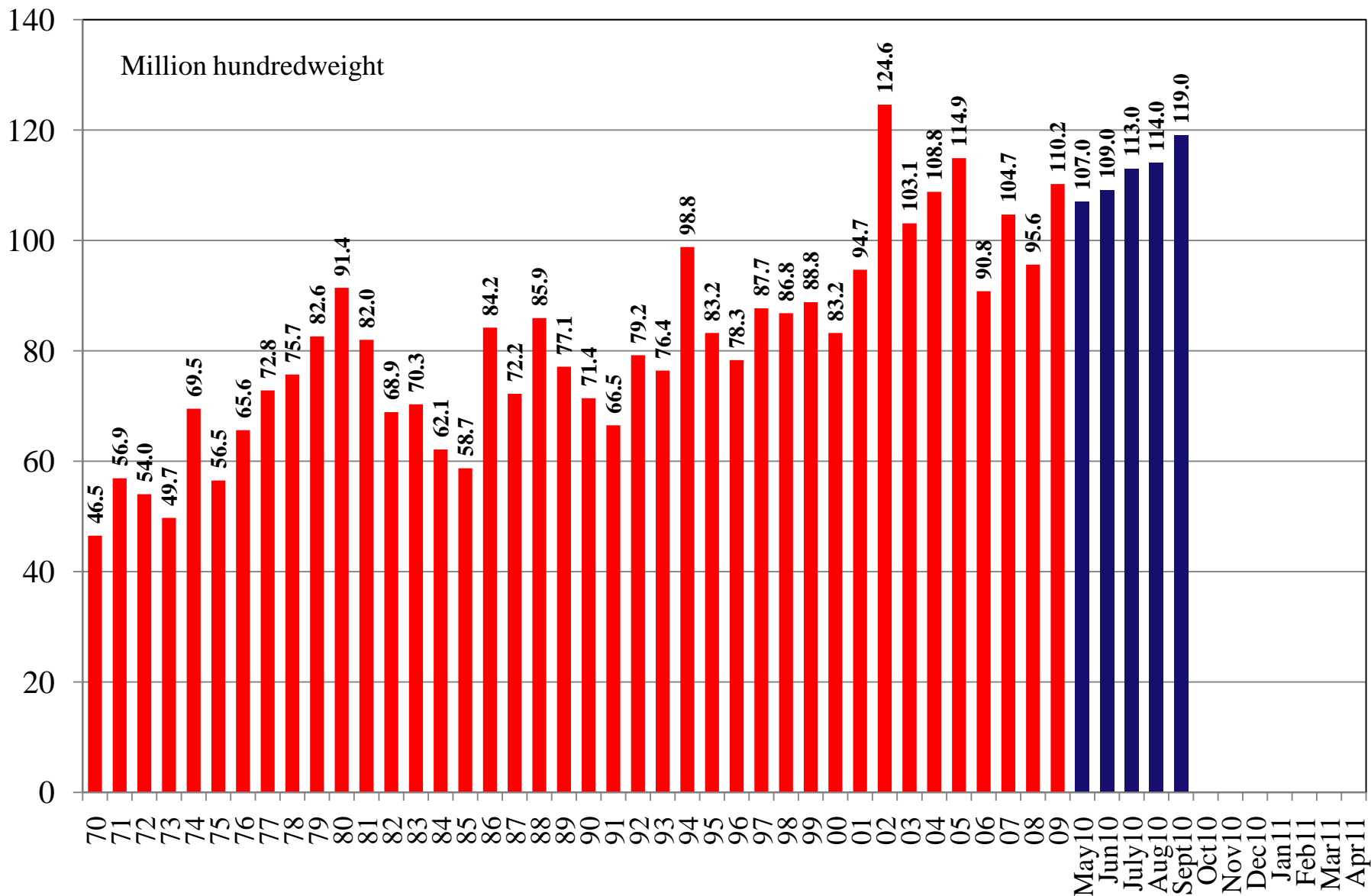
Source: [USDA World Supply and Demand Estimates](#) and [Rice Yearbook](#)

U.S. All Rice Total Domestic and Residual Use 1970/71 – 2010/11



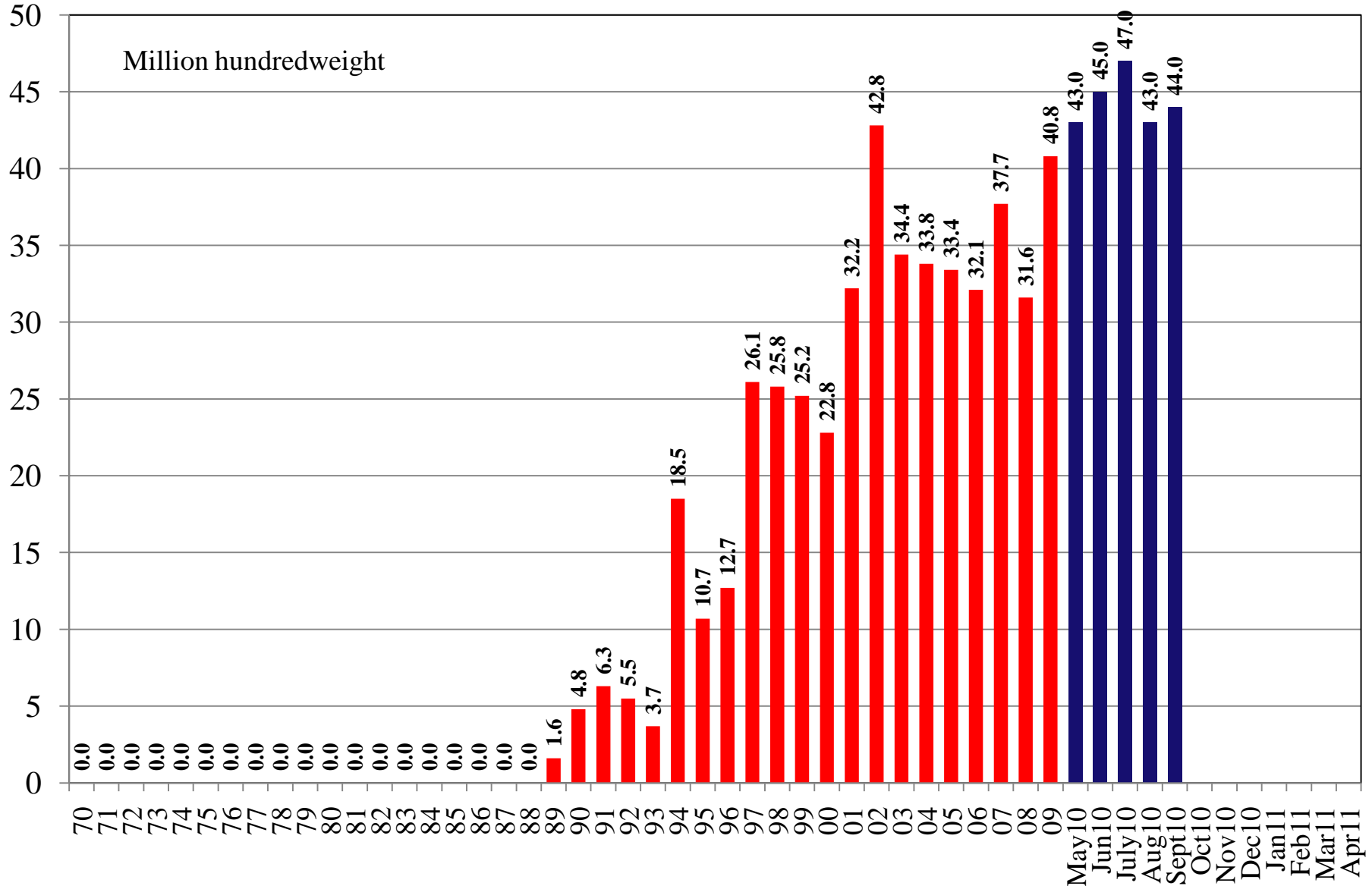
Source: [USDA World Supply and Demand Estimates](#) and [Rice Yearbook](#)

U.S. All Rice Total Exports 1970/71 – 2010/11



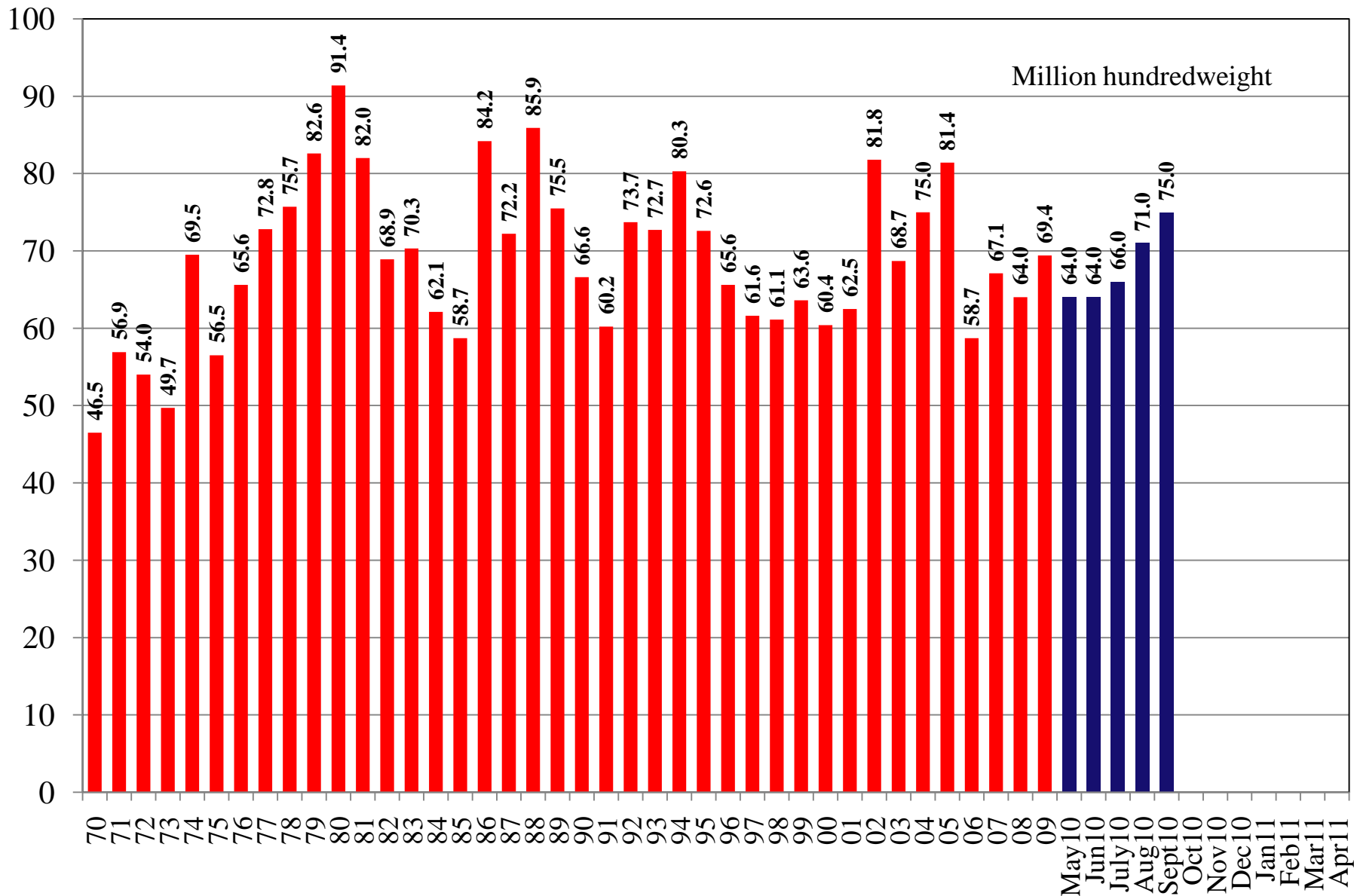
Source: [USDA World Supply and Demand Estimates](#) and [Rice Yearbook](#)

U.S. All Rice Rough Exports 1970/71 – 2010/11

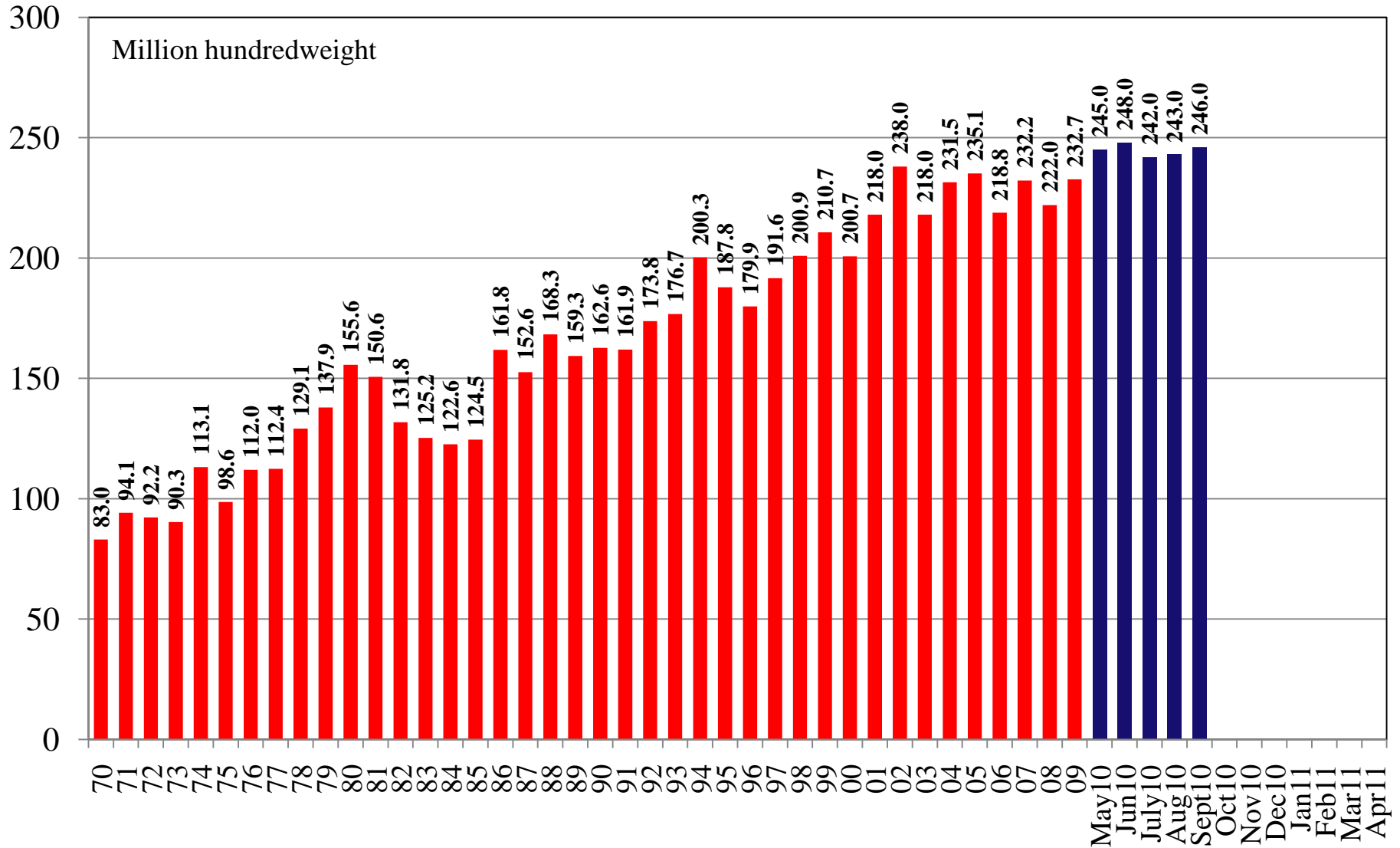


Source: [USDA World Supply and Demand Estimates](#) and [Rice Yearbook](#)

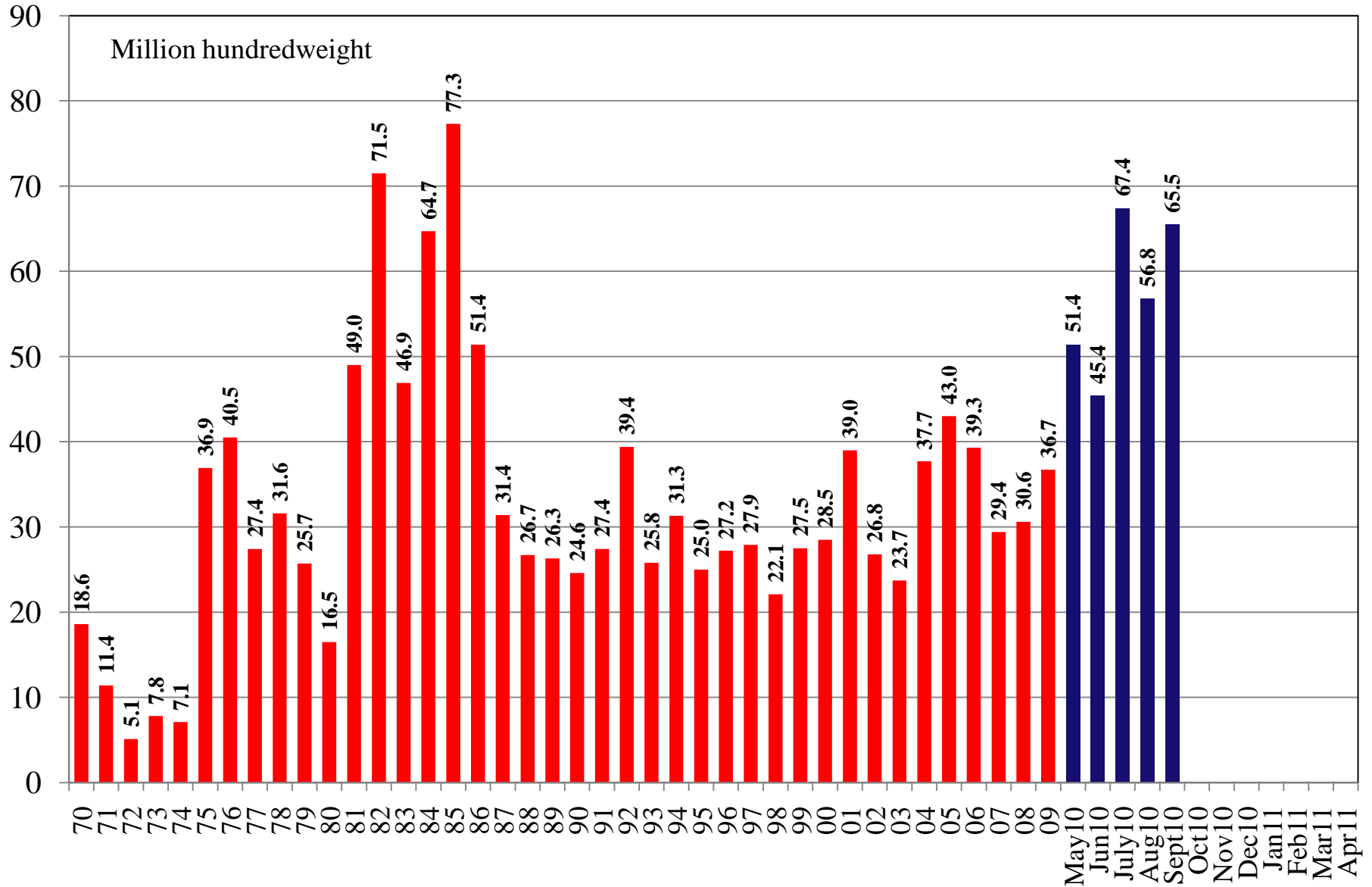
U.S. All Rice Milled Exports 1970/71 – 2010/11



U.S. All Rice Total Use 1970/71 – 2010/11



U.S. All Rice Ending Stocks 1970/71 – 2010/11



Source: [USDA World Supply and Demand Estimates](#) and [Rice Yearbook](#)