

# **U.S. Rice Supply and Demand Estimates**

## **Slide Show**

### **December 10, 2010**

**By**

**Robert Coats, Ph.D.**

**Extension Economist and Professor - Economics**

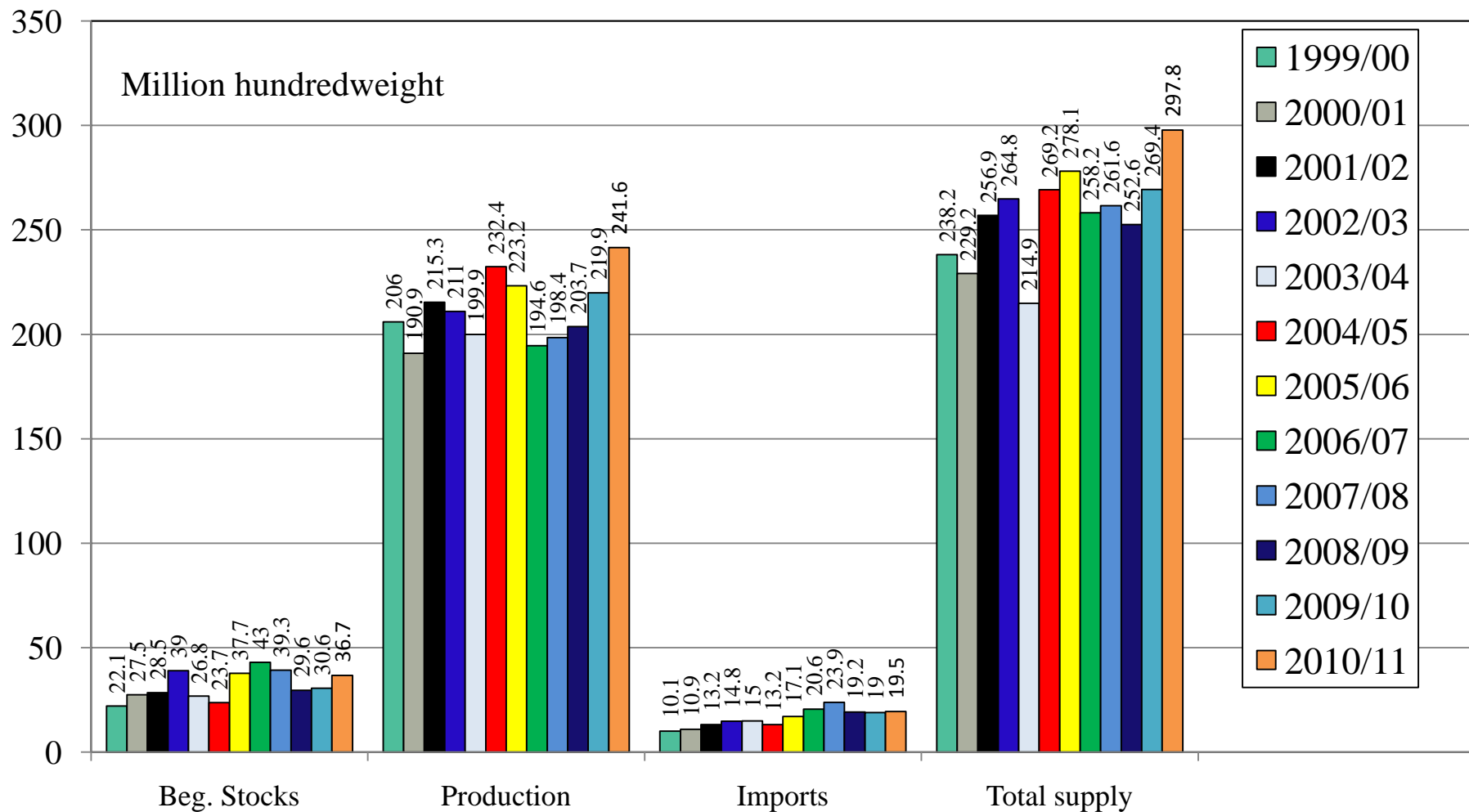
**Department of Agricultural Economics and Agribusiness**

**Division of Agriculture**

**University of Arkansas**

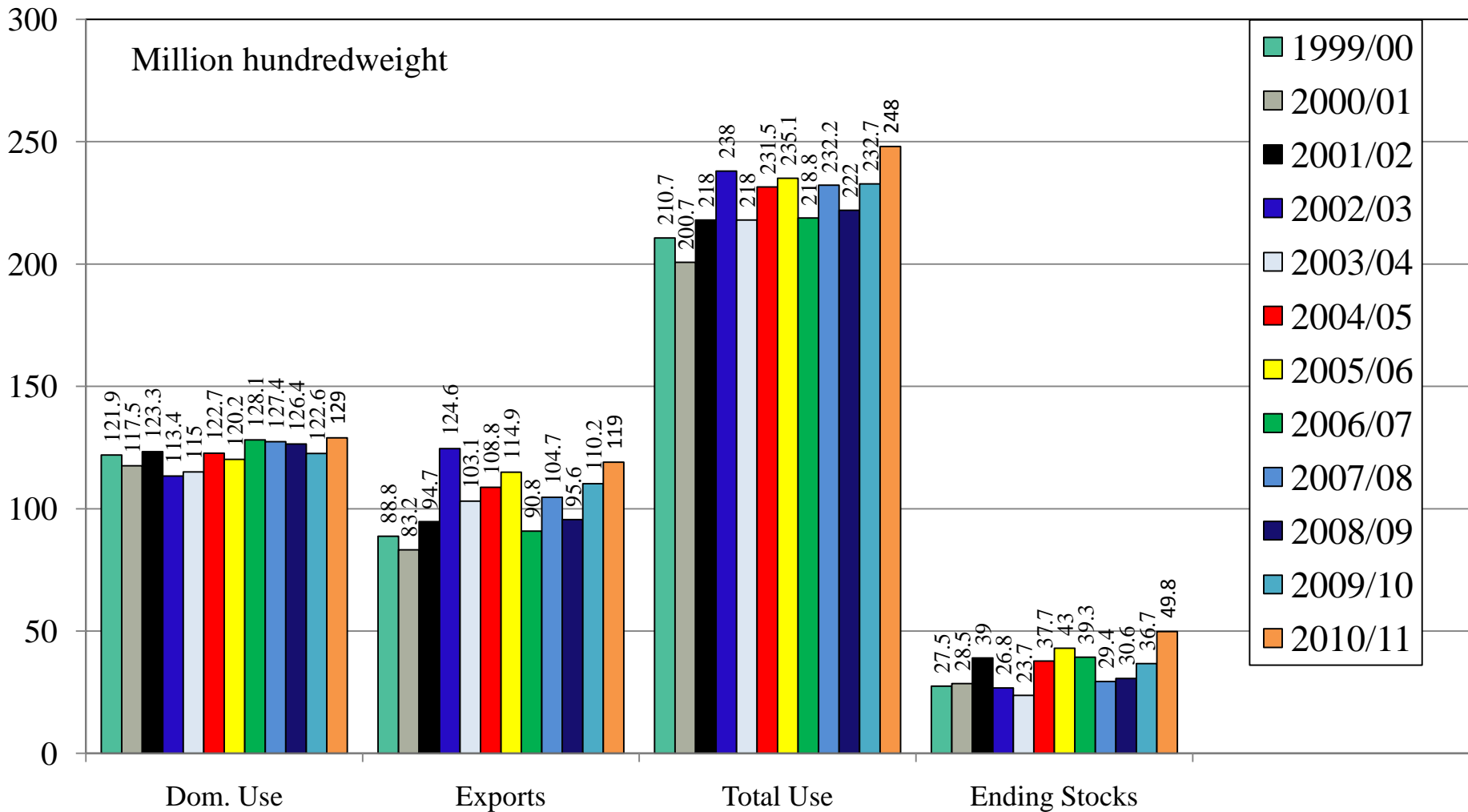
# U.S. All Rice Supply 1999/00 – 2010/11

Average Farm Price (\$/cwt): 2008/09 \$16.80, 2009/10 \$14.00, 2010/11 \$12.00-\$13.00



# U.S. All Rice

## Use and Ending Stocks 1999/00 – 2010/11

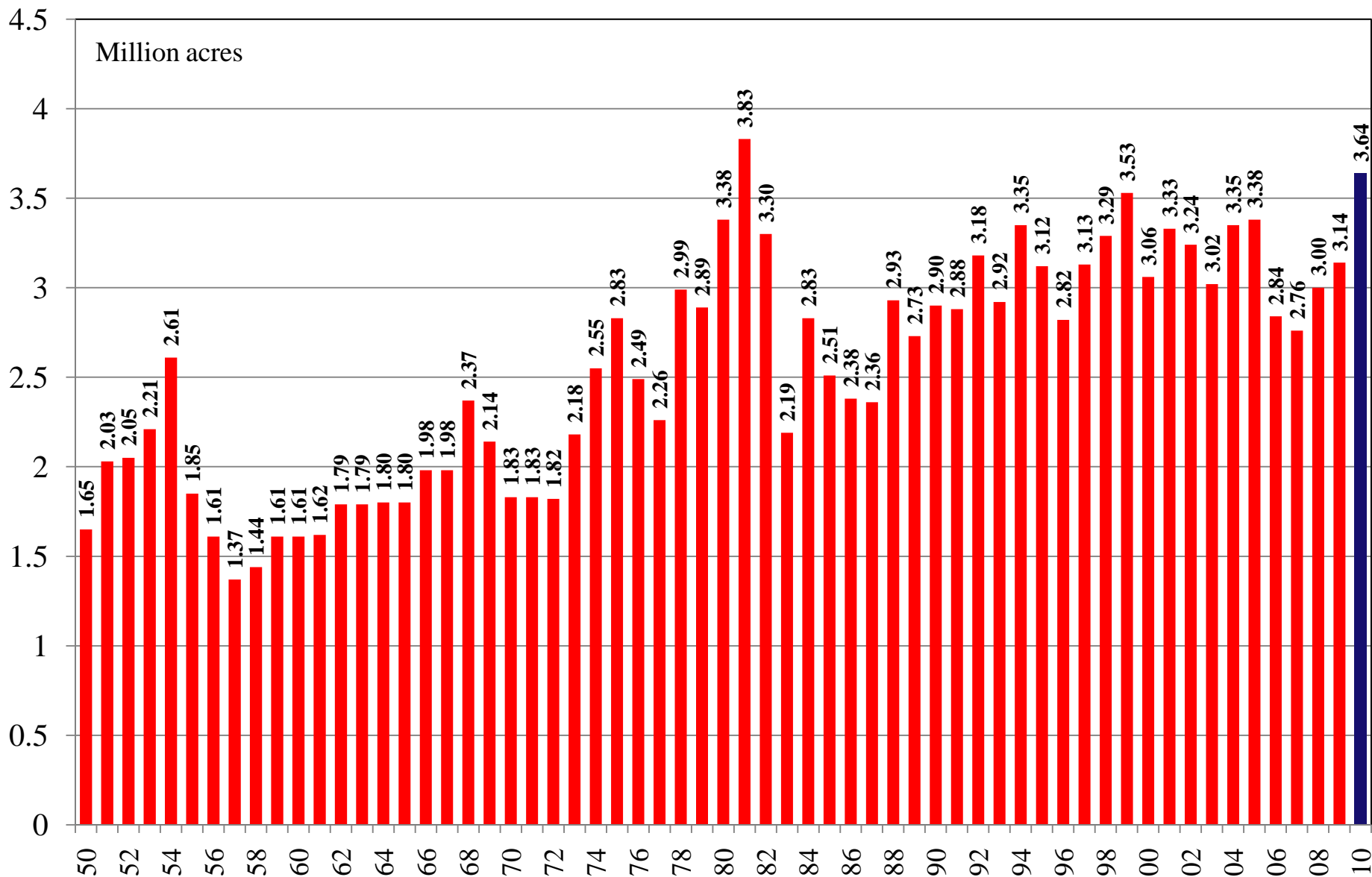


# **U.S. All Rice**

## **Supply and Demand Estimates**

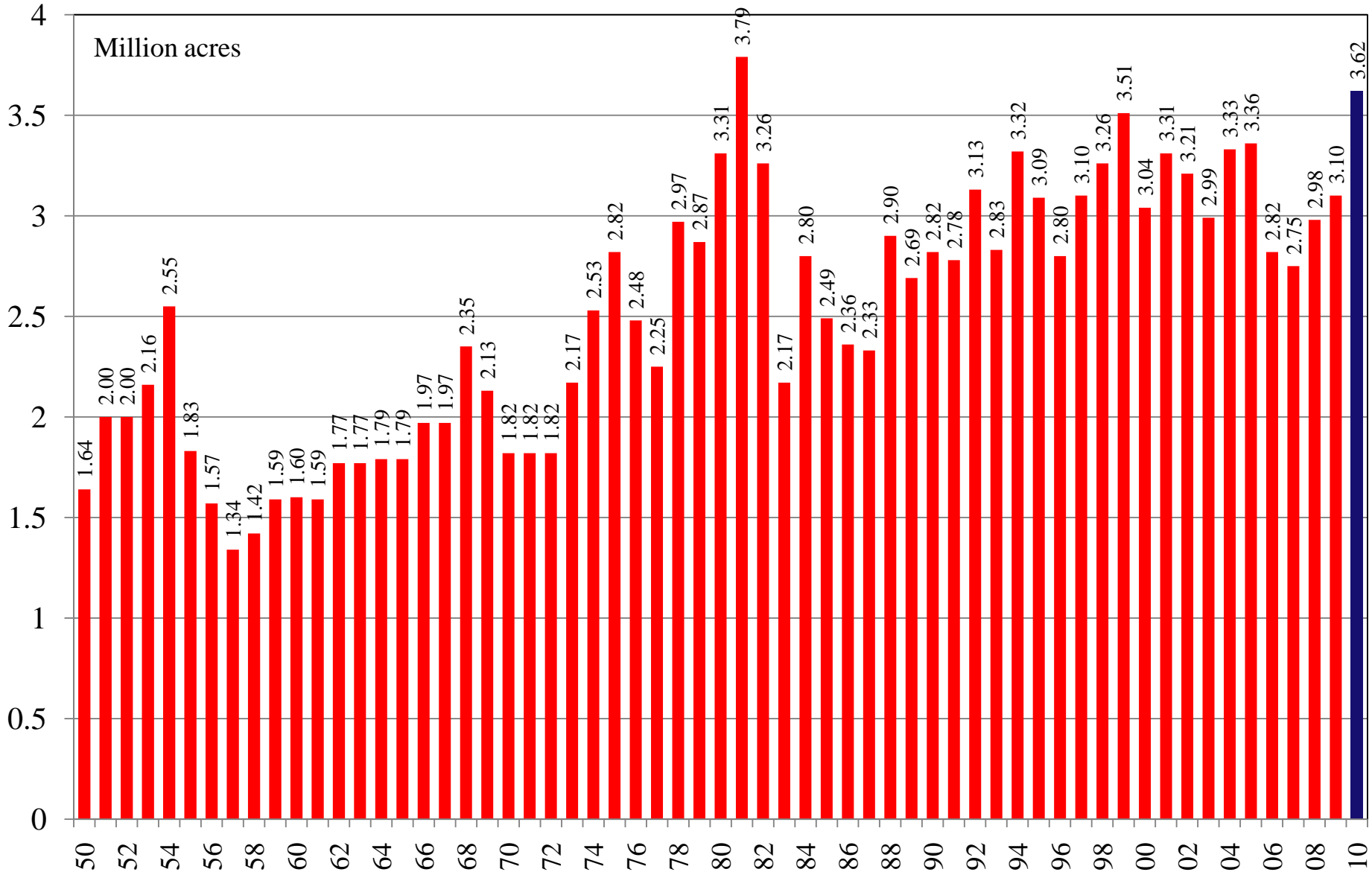
**December 10, 2010**

# U.S. All Rice Planted Acres 1950/51 – 2010/11



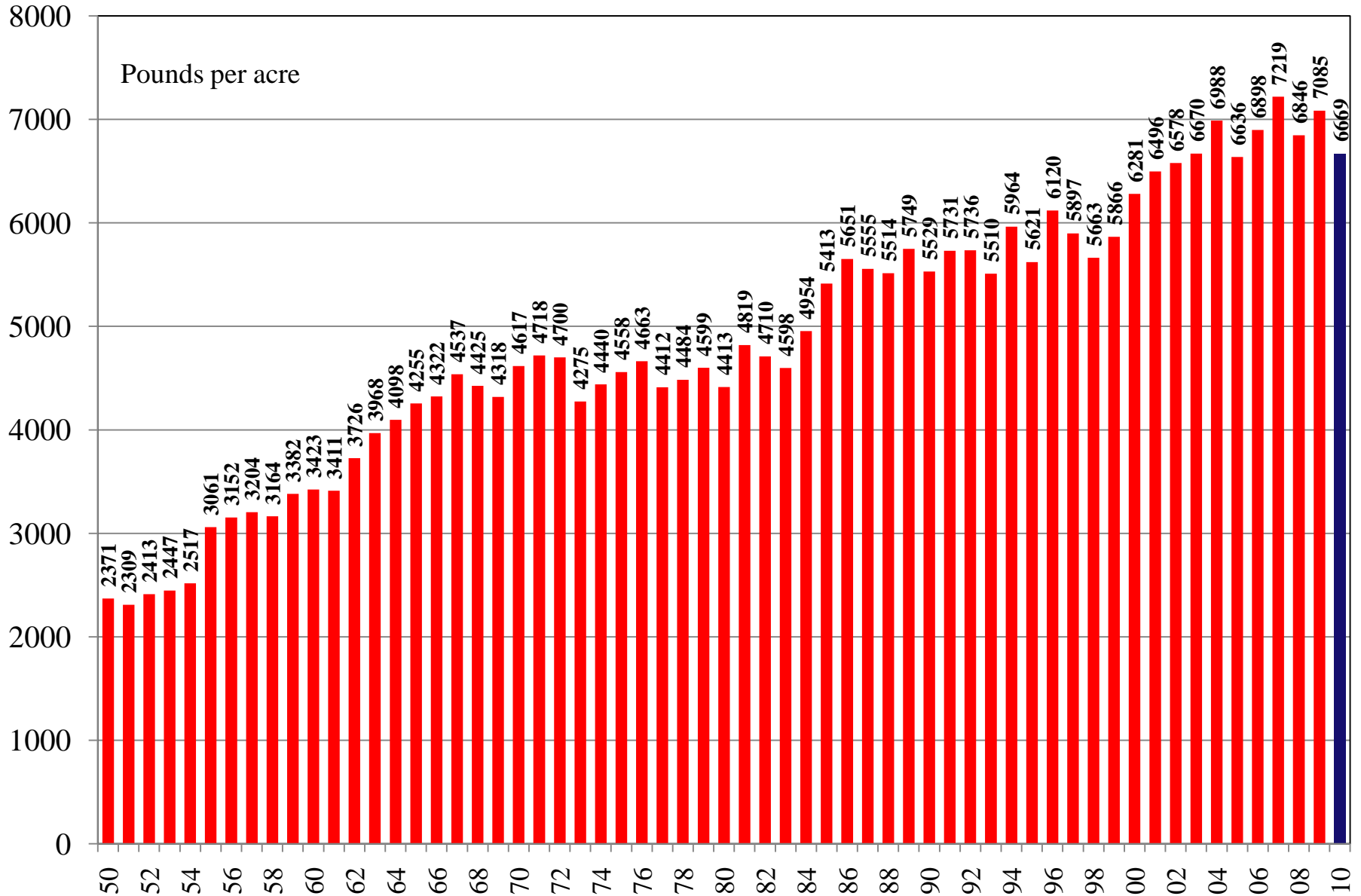
Source: [USDA World Supply and Demand Estimates](#) and [Rice Yearbook](#)

# U.S. All Rice Harvested Acres 1950/51 – 2010/11



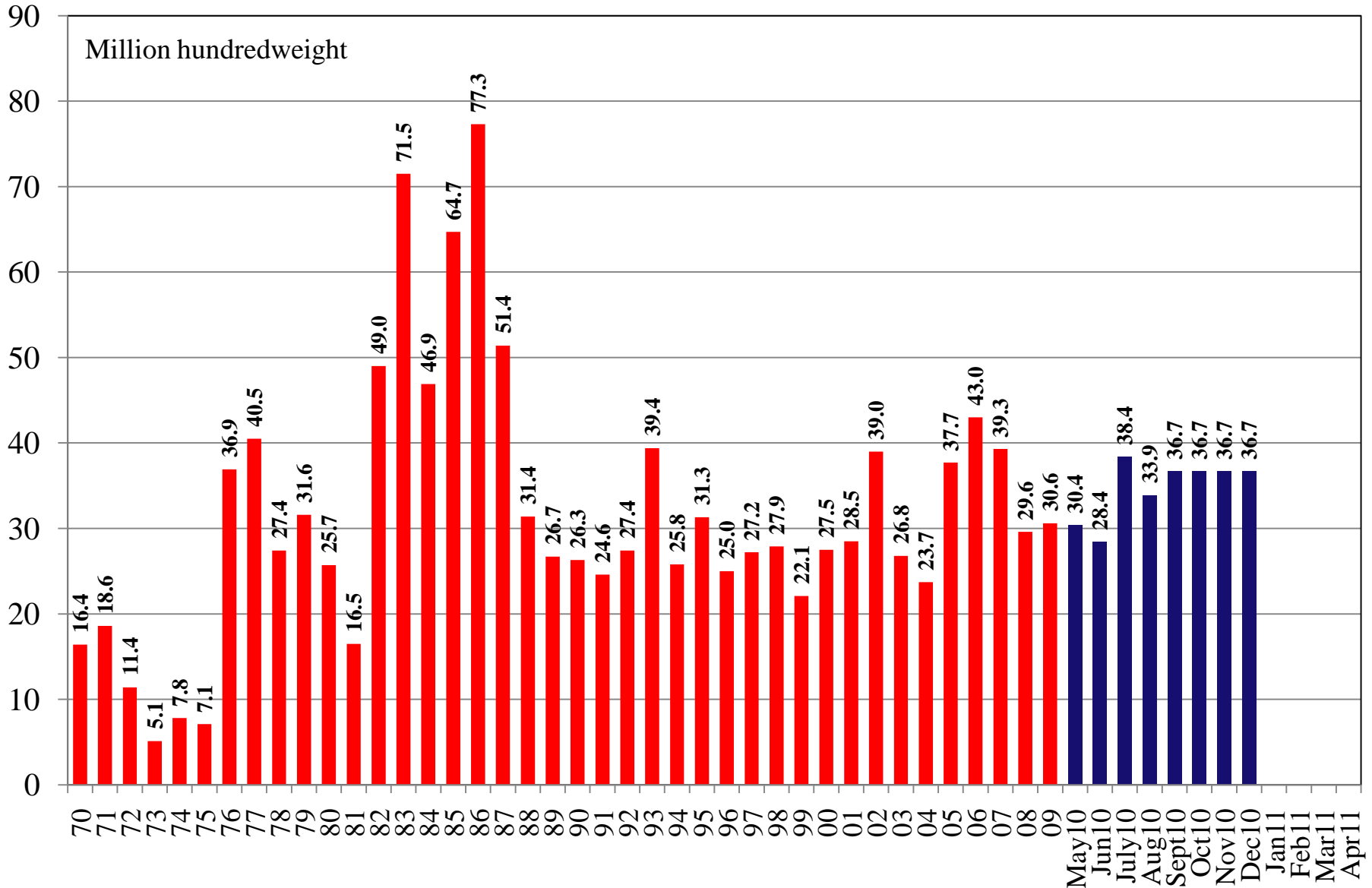
Source: [USDA World Supply and Demand Estimates](#) and [Rice Yearbook](#)

# U.S. All Rice Yield 1950/51 – 2010/11



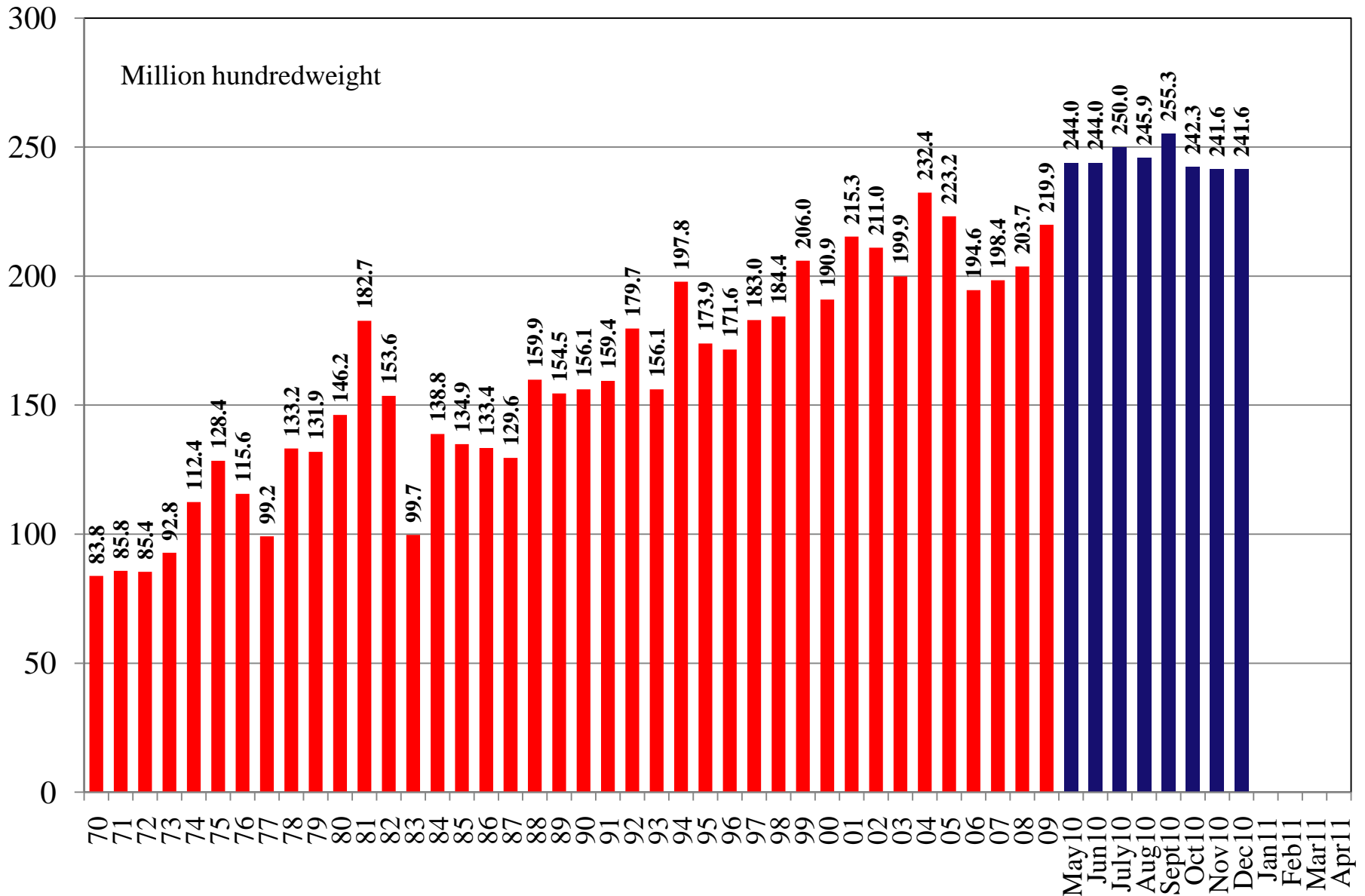
Source: [USDA World Supply and Demand Estimates](#) and [Rice Yearbook](#)

# U.S. All Rice Beginning Stocks 1970/71 – 2010/11



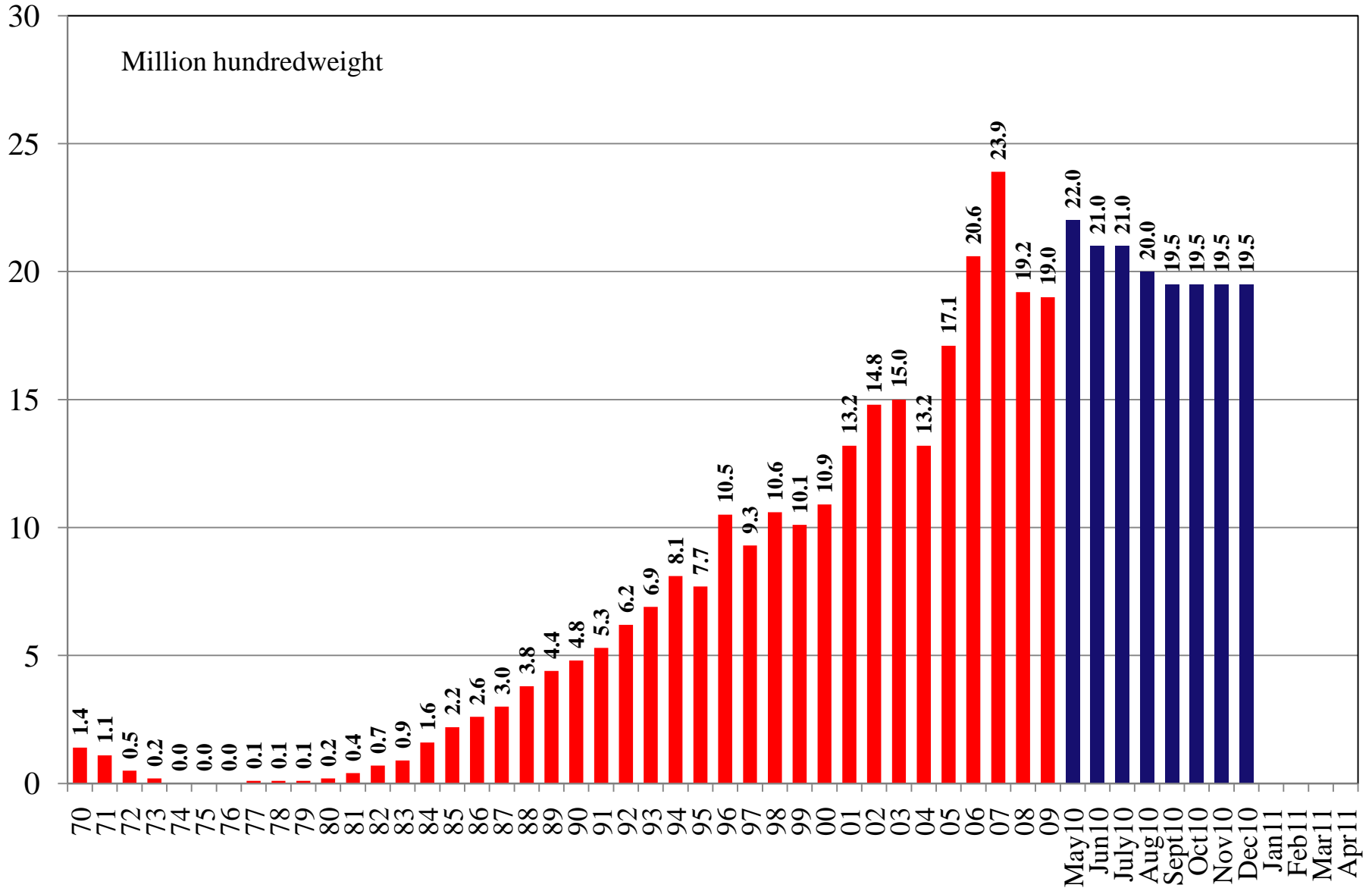
Source: [USDA World Supply and Demand Estimates](#) and [Rice Yearbook](#)

# U.S. All Rice Production 1970/71 – 2010/11



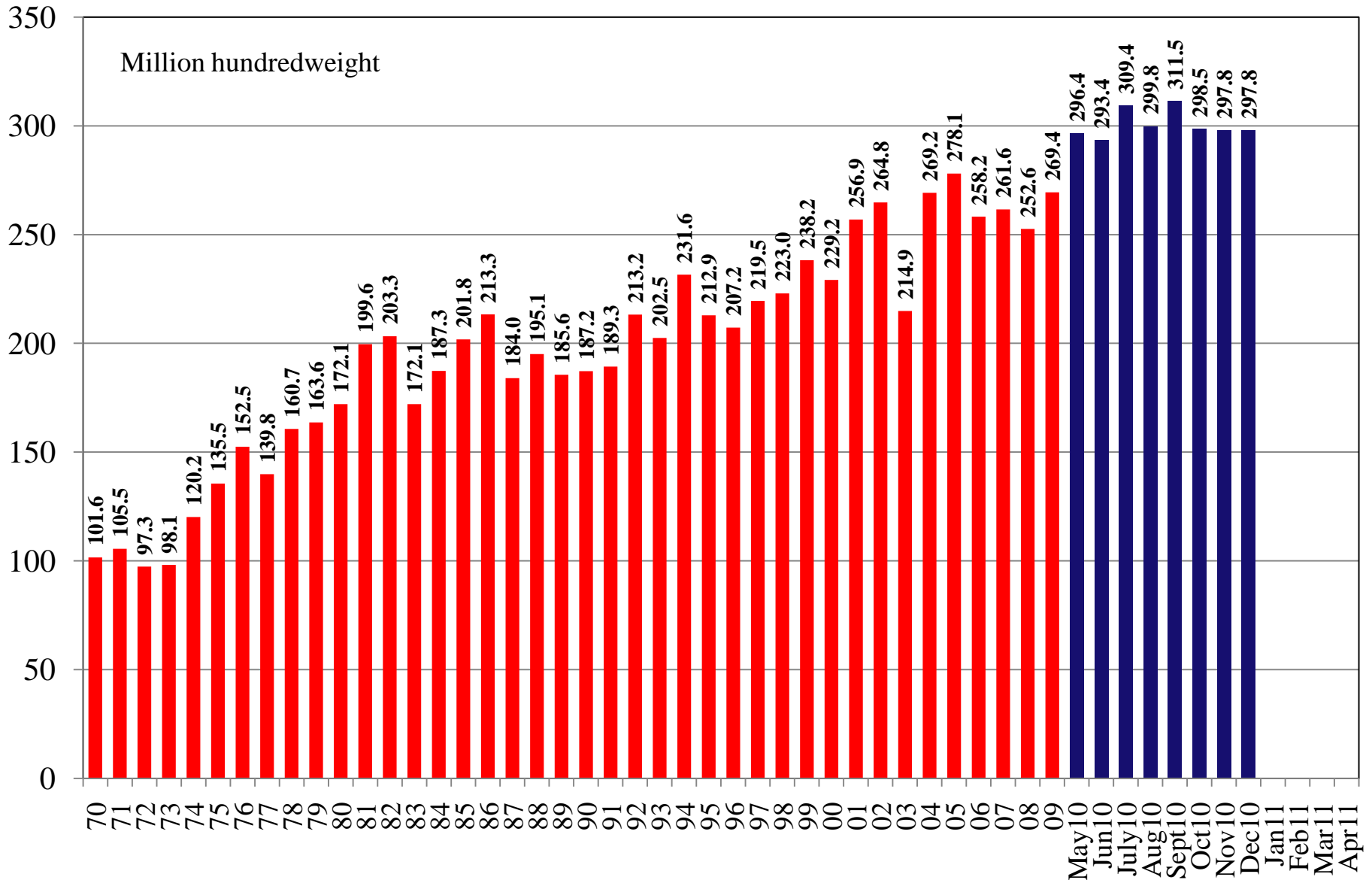
Source: [USDA World Supply and Demand Estimates](#) and [Rice Yearbook](#)

# U.S. All Rice Imports 1970/71 – 2010/11

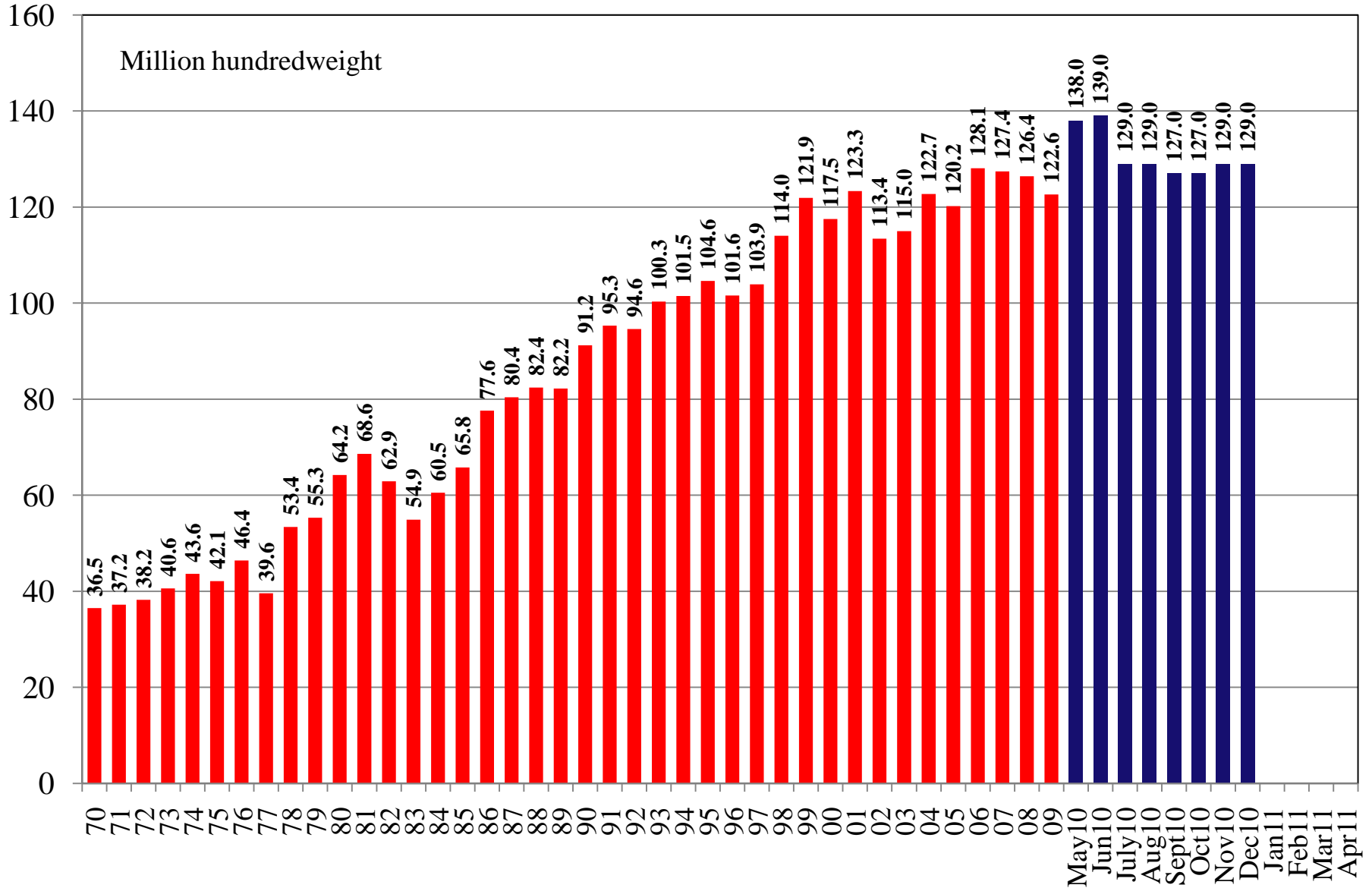


Source: [USDA World Supply and Demand Estimates](#) and [Rice Yearbook](#)

# U.S. All Rice Total Supply 1970/71 – 2010/11

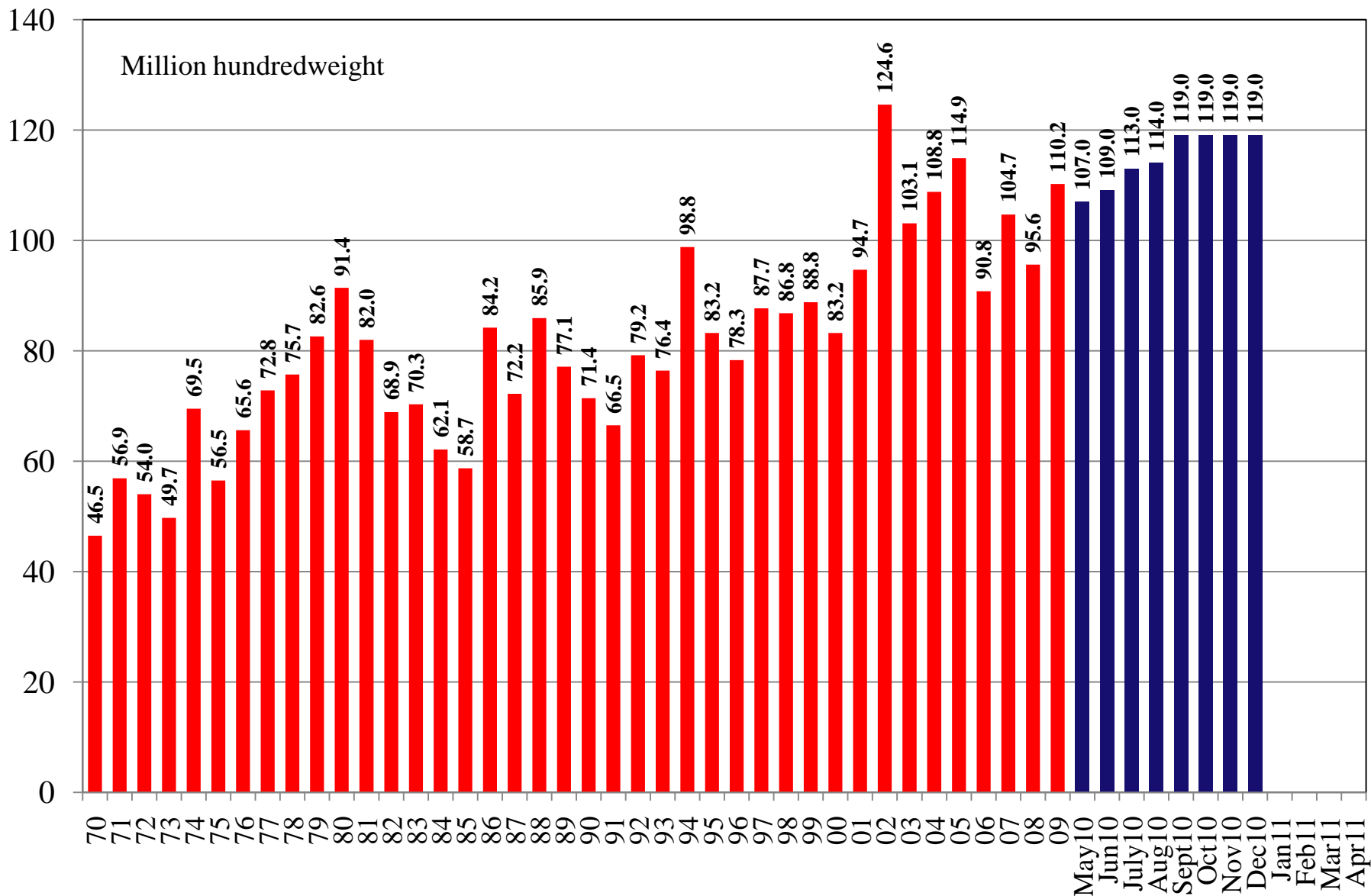


# U.S. All Rice Total Domestic and Residual Use 1970/71 – 2010/11



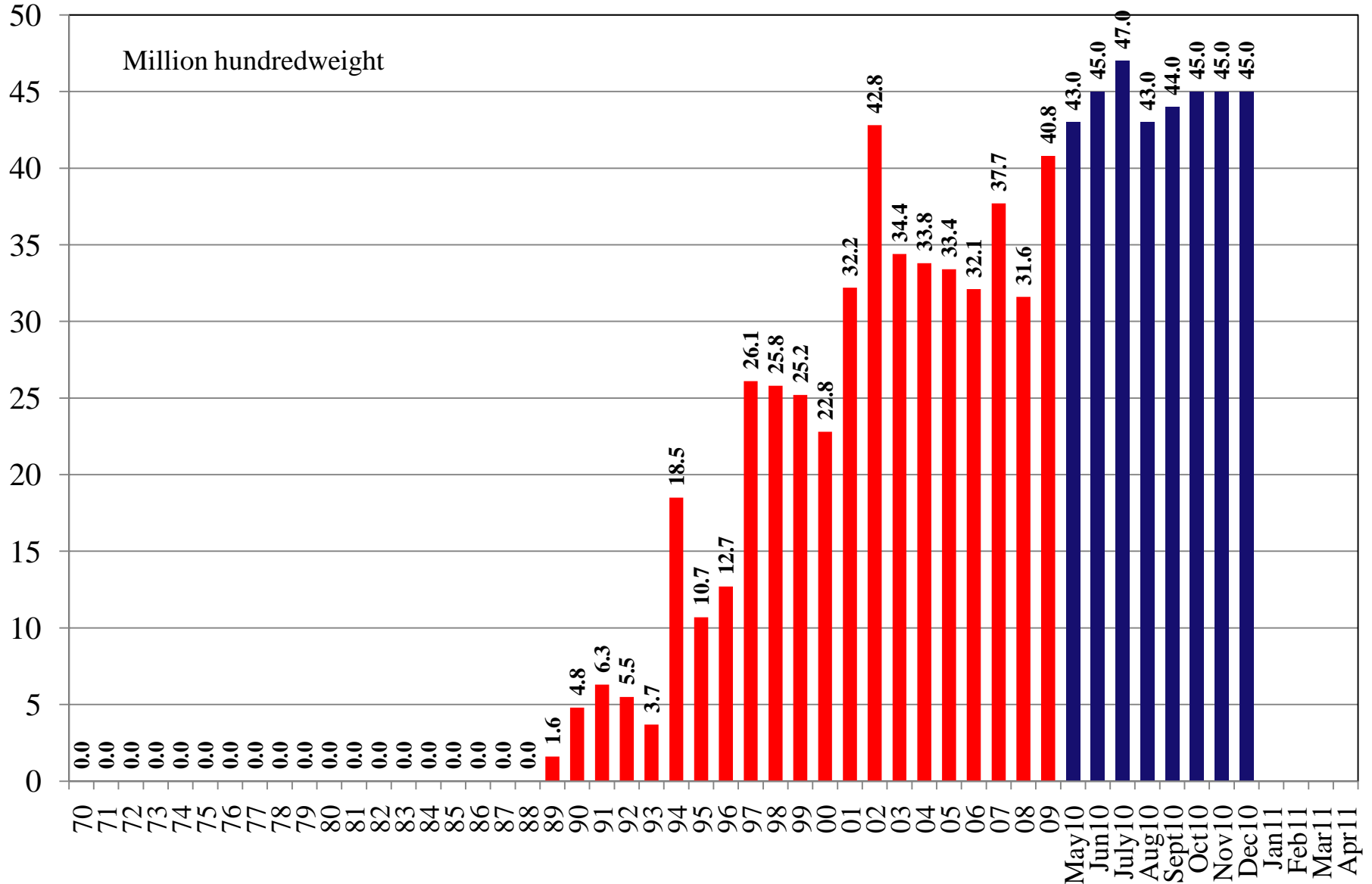
Source: [USDA World Supply and Demand Estimates](#) and [Rice Yearbook](#)

# U.S. All Rice Total Exports 1970/71 – 2010/11



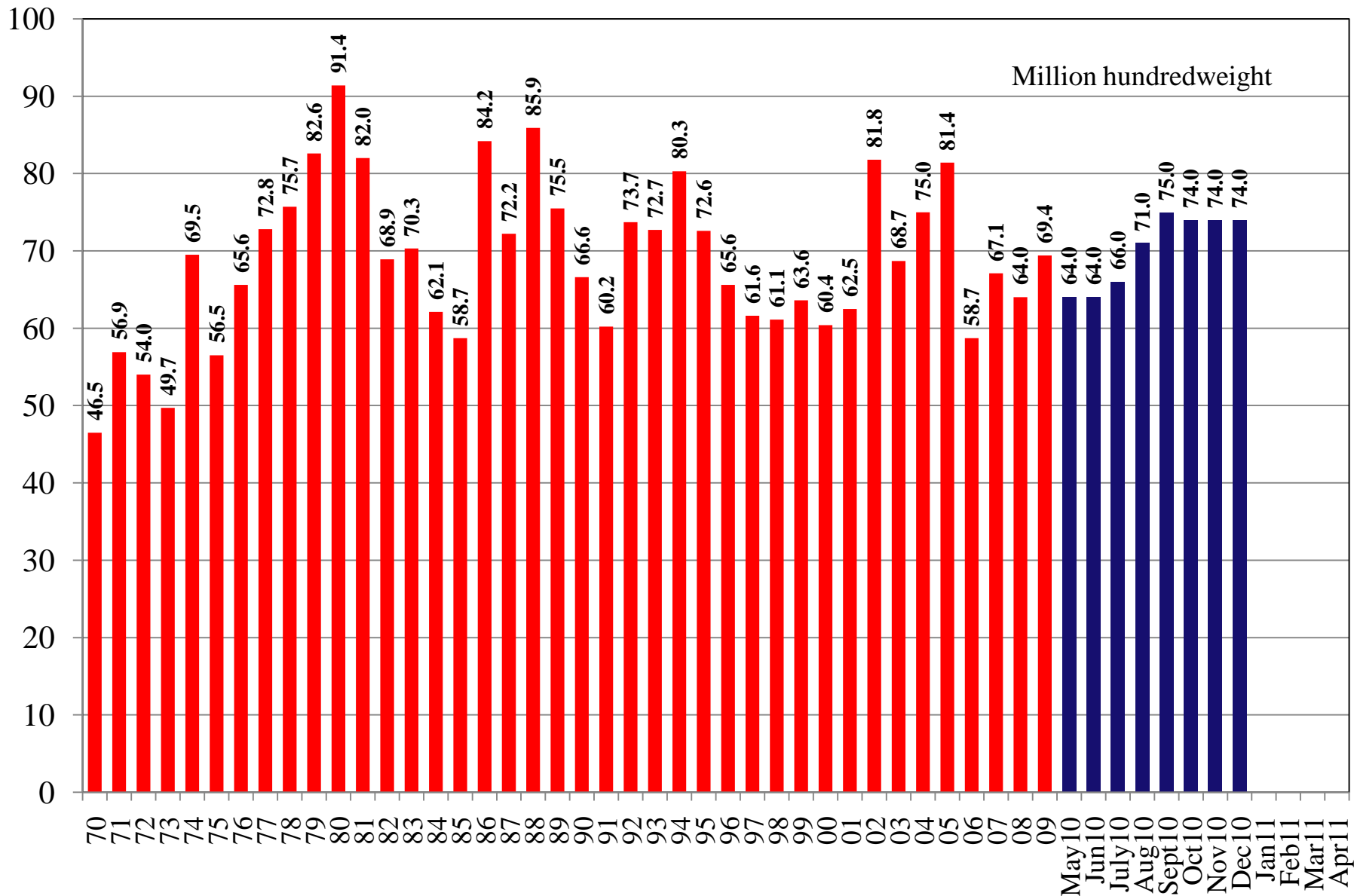
Source: [USDA World Supply and Demand Estimates](#) and [Rice Yearbook](#)

# U.S. All Rice Rough Exports 1970/71 – 2010/11

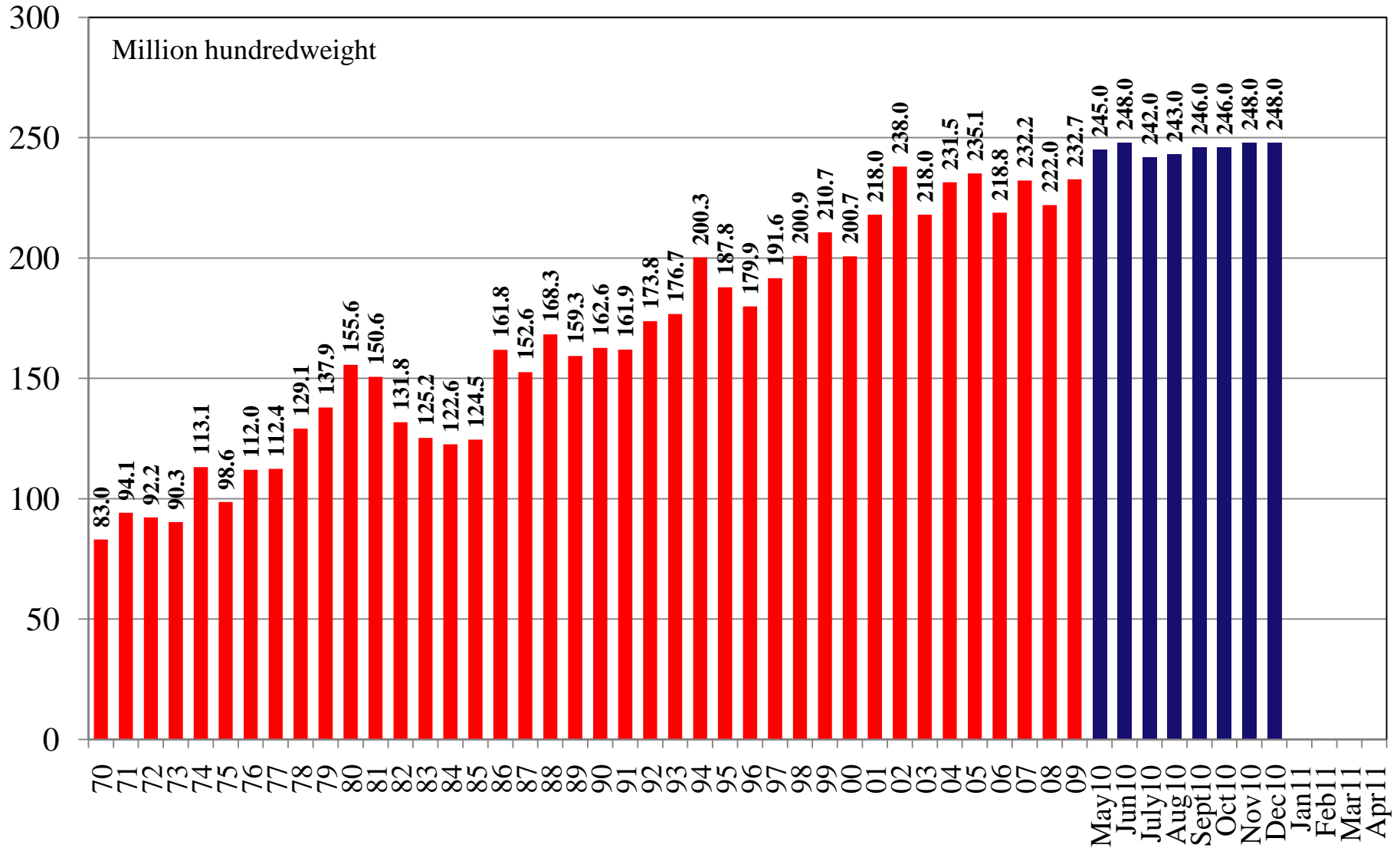


Source: [USDA World Supply and Demand Estimates](#) and [Rice Yearbook](#)

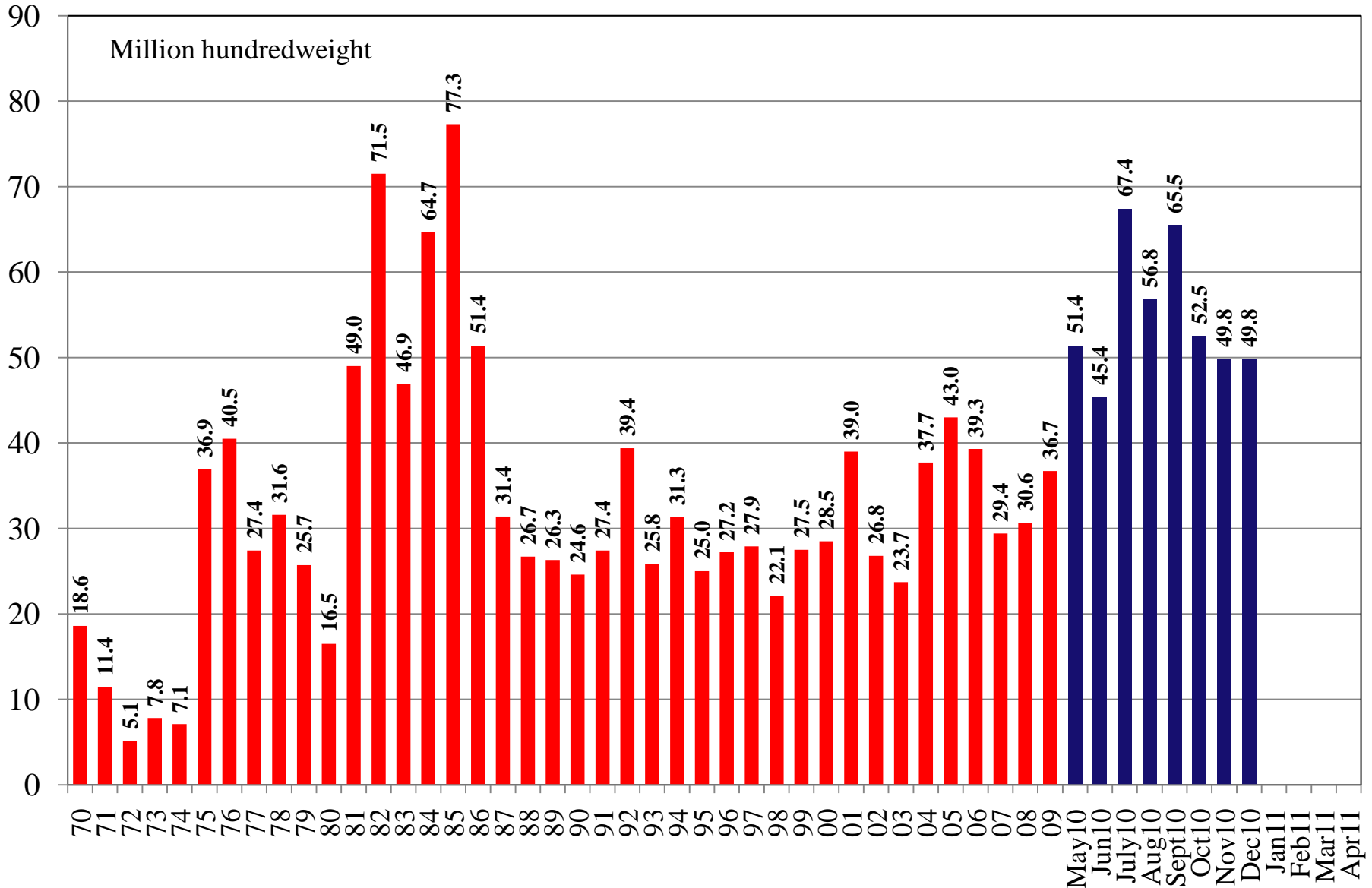
# U.S. All Rice Milled Exports 1970/71 – 2010/11



# U.S. All Rice Total Use 1970/71 – 2010/11



# U.S. All Rice Ending Stocks 1970/71 – 2010/11



Source: [USDA World Supply and Demand Estimates](#) and [Rice Yearbook](#)