

2010 U.S. and State Rice Acreage

Slide Show

September 10, 2010

By

Robert Coats, Ph.D.

Extension Economist and Professor - Economics

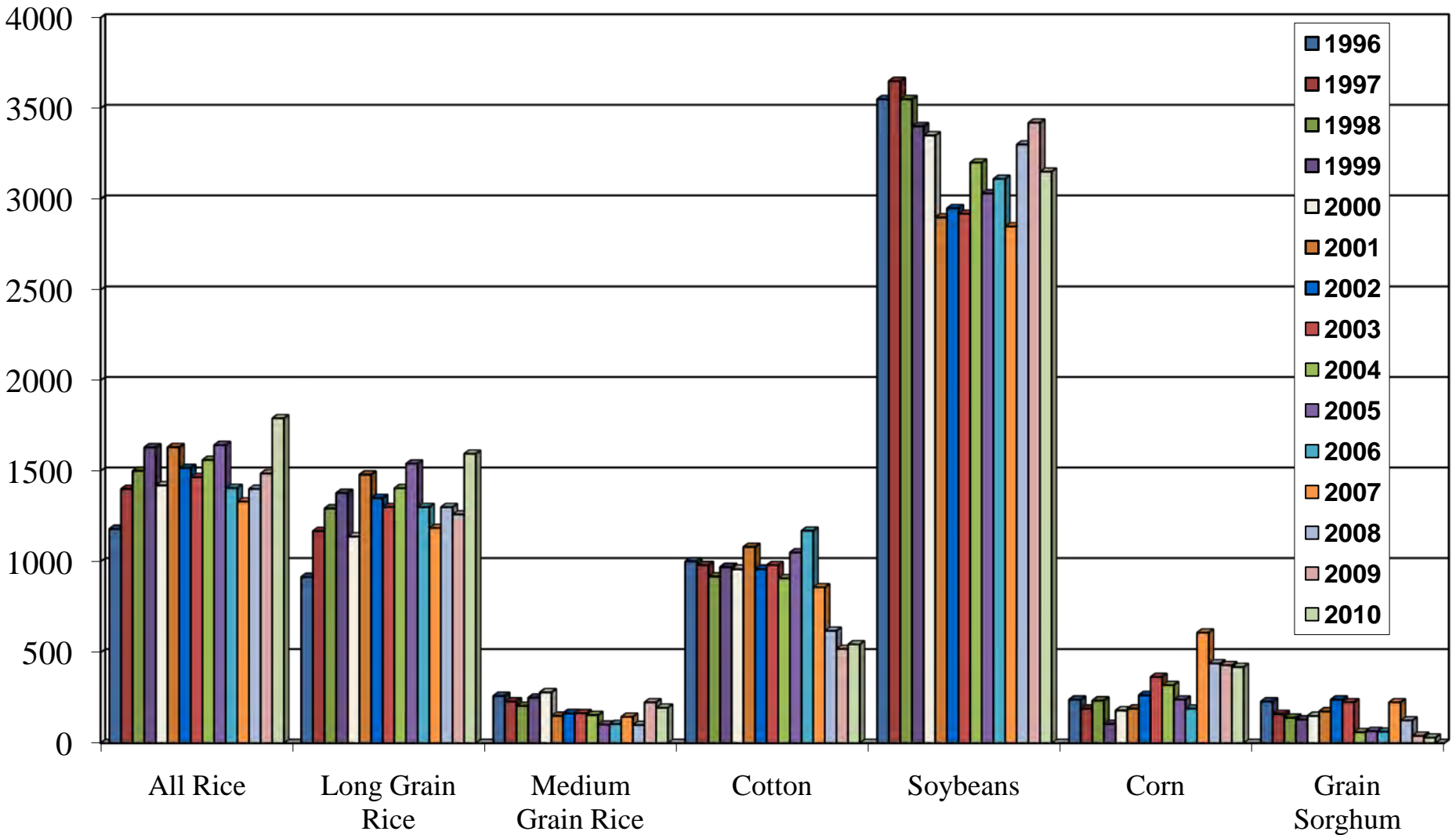
Department of Agricultural Economics and Agribusiness

Division of Agriculture

University of Arkansas

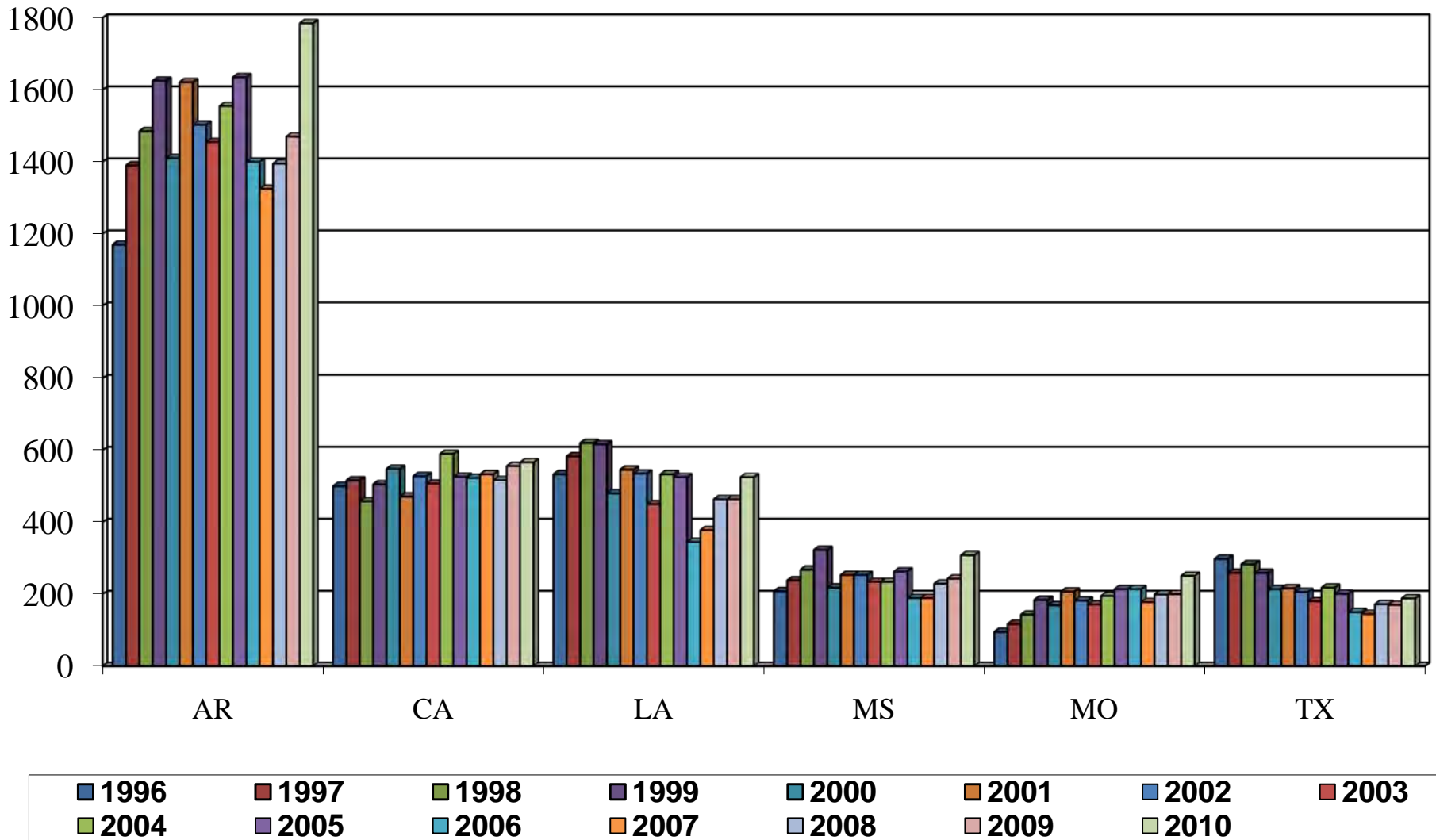
Arkansas 1996-2010 Planted Acreage

Thousand Acres

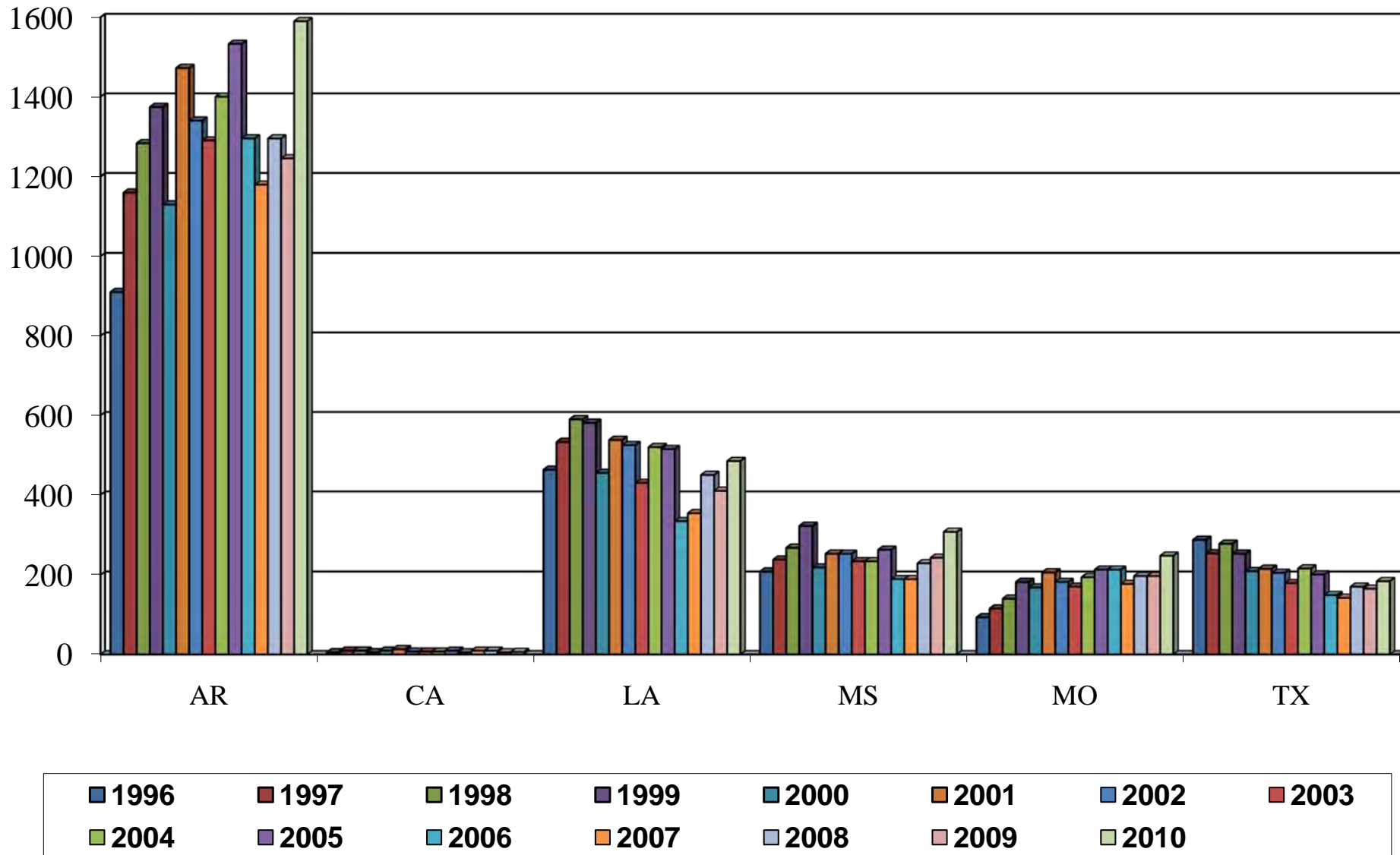


State Rice Data

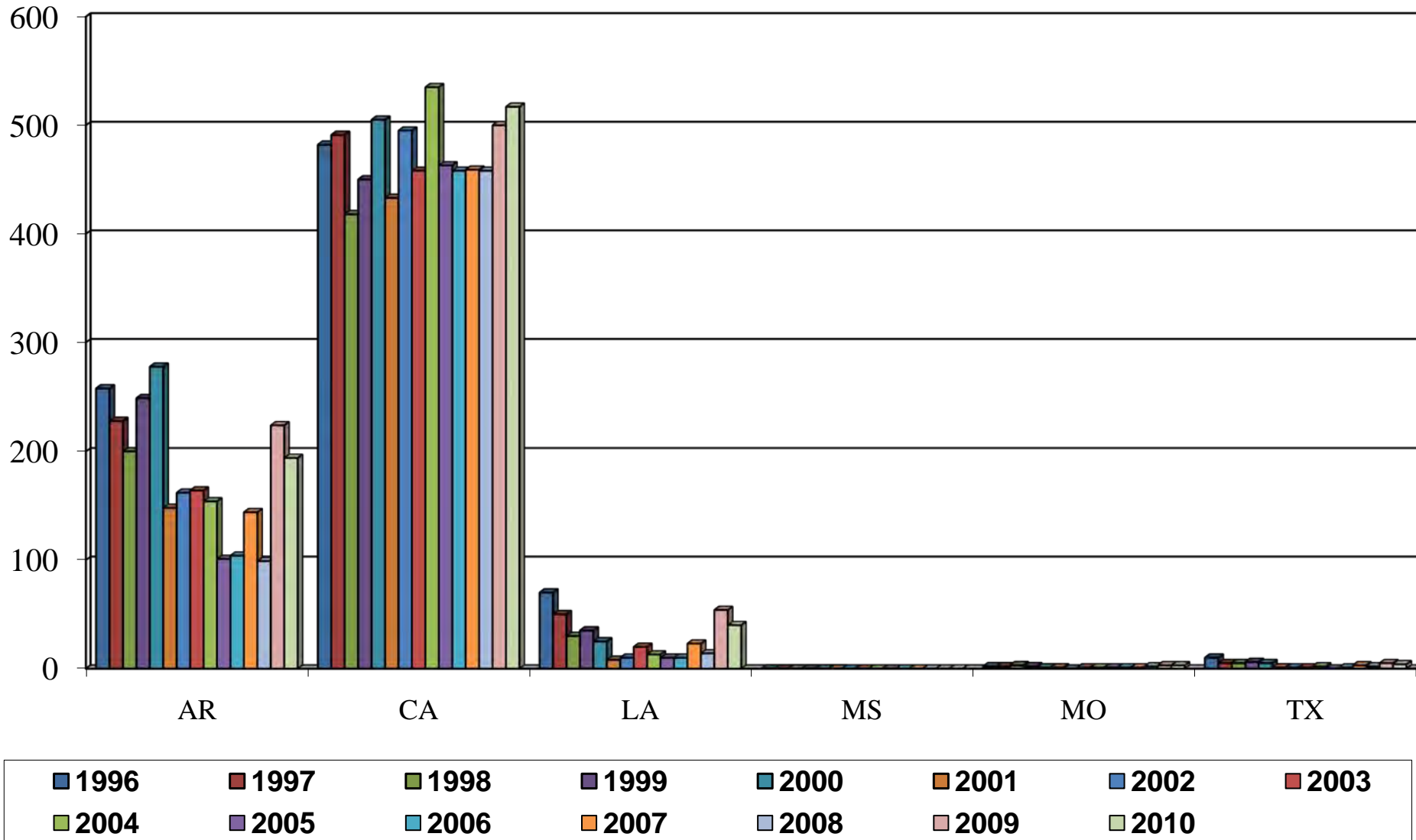
U.S. All Rice Harvested By State 1996-2010, Thousand Acres



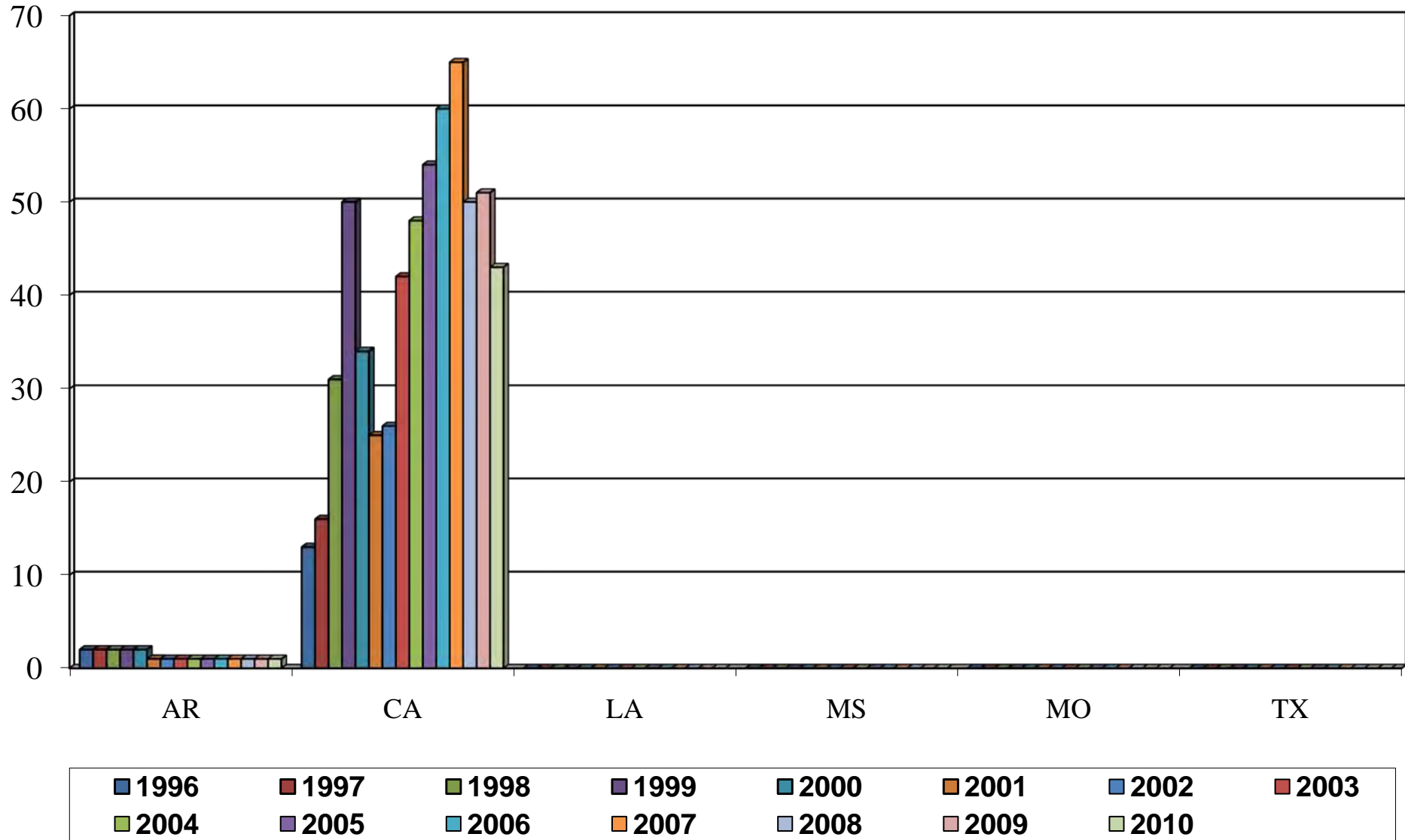
U.S. Long Grain Rice Harvested By State 1996-2010, Thousand Acres



U.S. Medium Grain Rice Harvested By State 1996-2010, Thousand Acres



U.S. Short Grain Rice Harvested By State 1996-2010, Thousand Acres



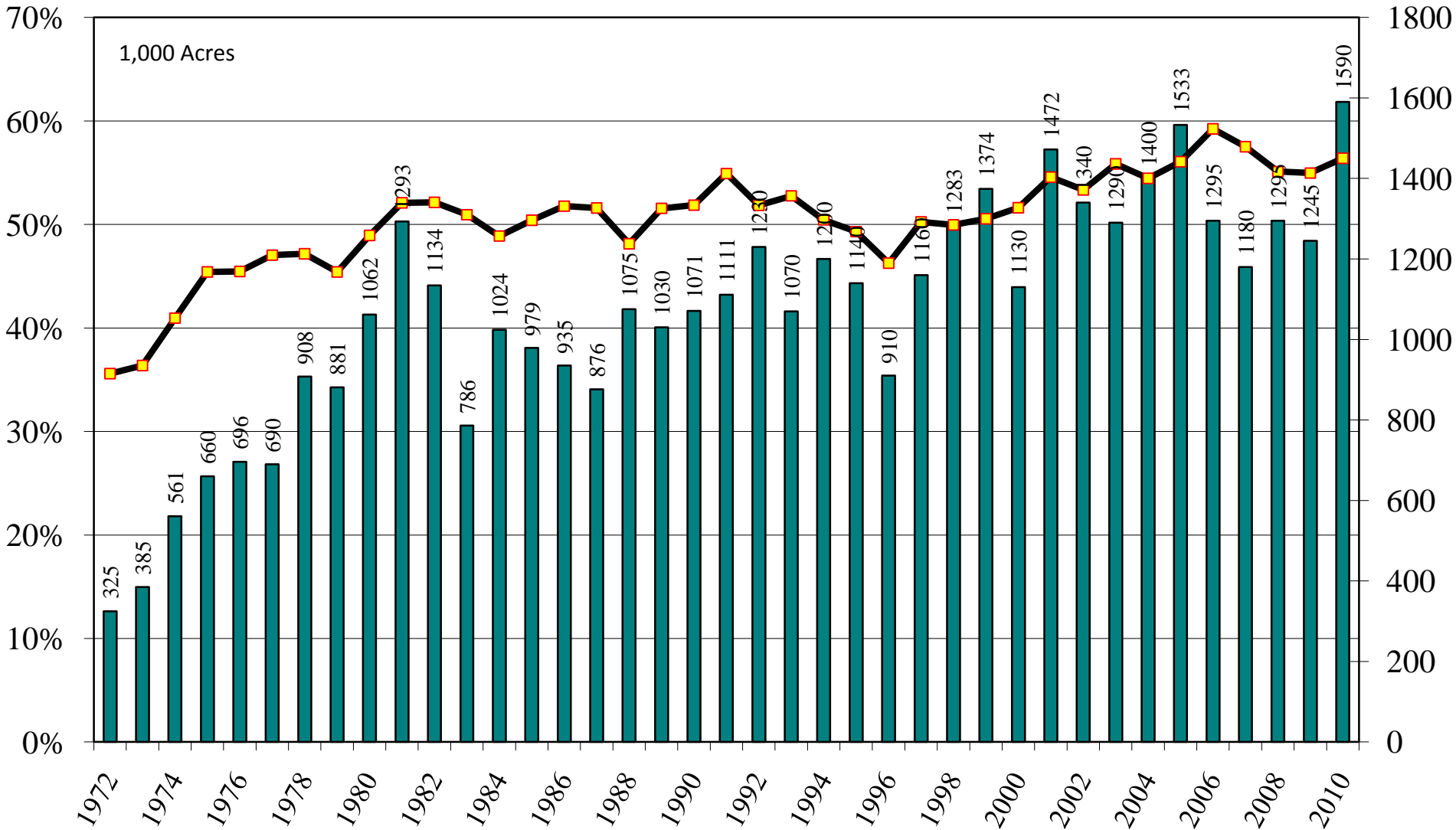
September 10, 2010 USDA/NASS Acreage Report

Rice: Area Harvested by Class, State, and U.S. 1972-2010

USDA/NASS September 10, 2010 Acreage Report

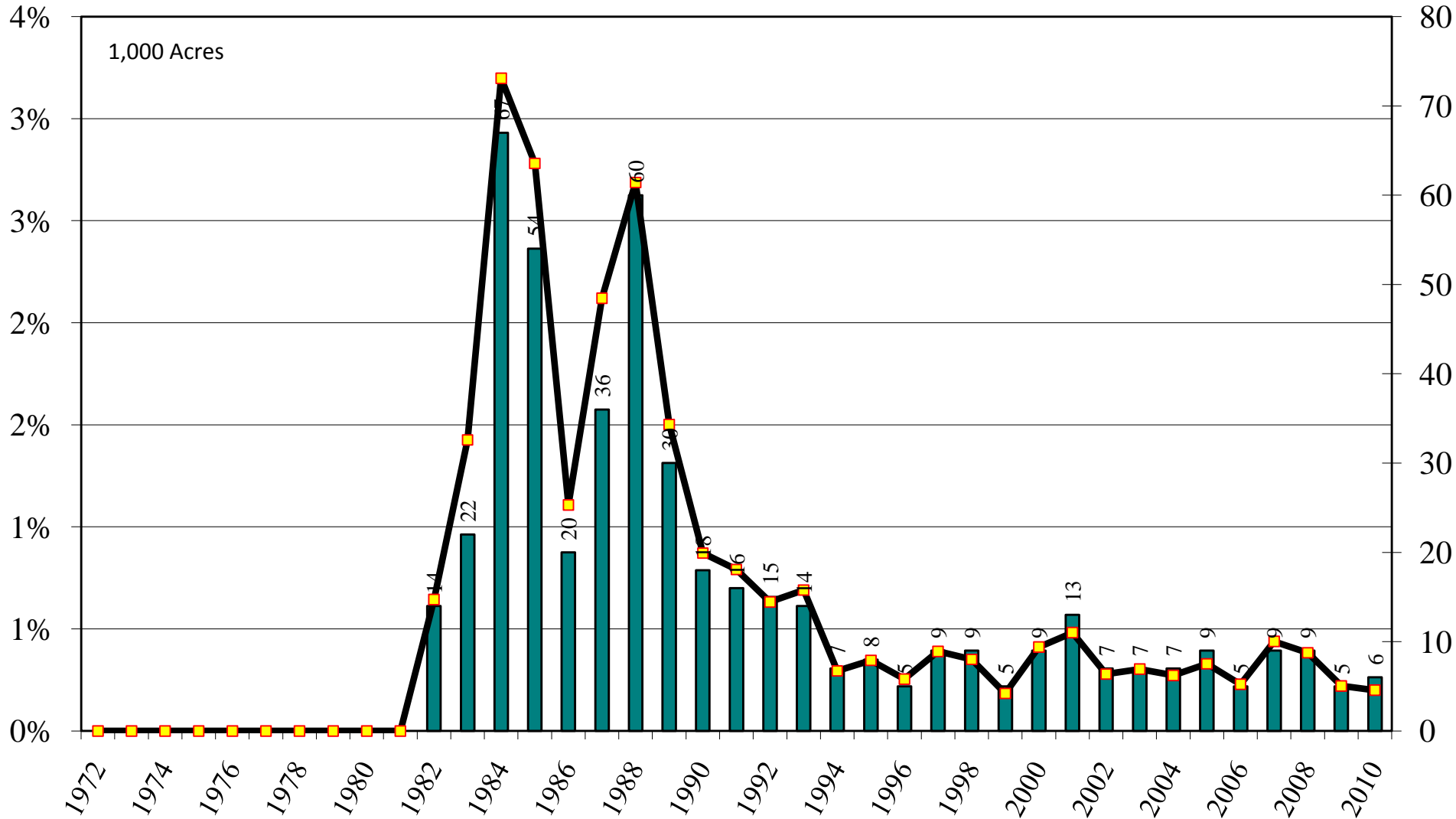
Rice: Long Grain Harvested Acres 1972-2010

Arkansas Long Grain Rice Harvested Acres and Percent of U.S. Long Grain Harvested Acres, 1972-2010



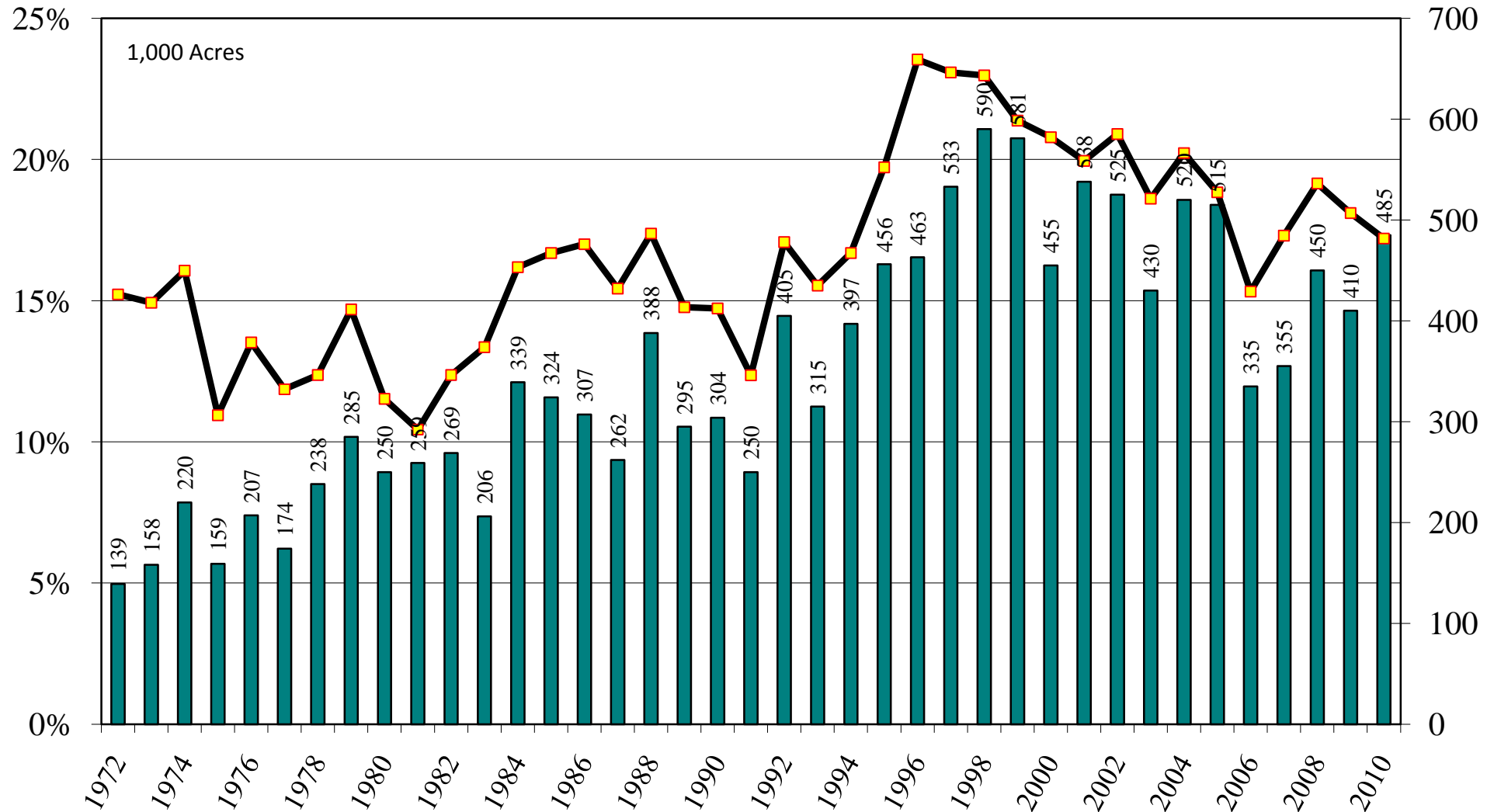
Source: [NASS/USDA Data Set](#) and [Crop Production--Acreage--Supplement](#)

California Long Grain Rice Harvested Acres and Percent of U.S. Long Grain Harvested Acres, 1972-2010



Source: [NASS/USDA Data Set](#) and [Crop Production--Acreage--Supplement](#)

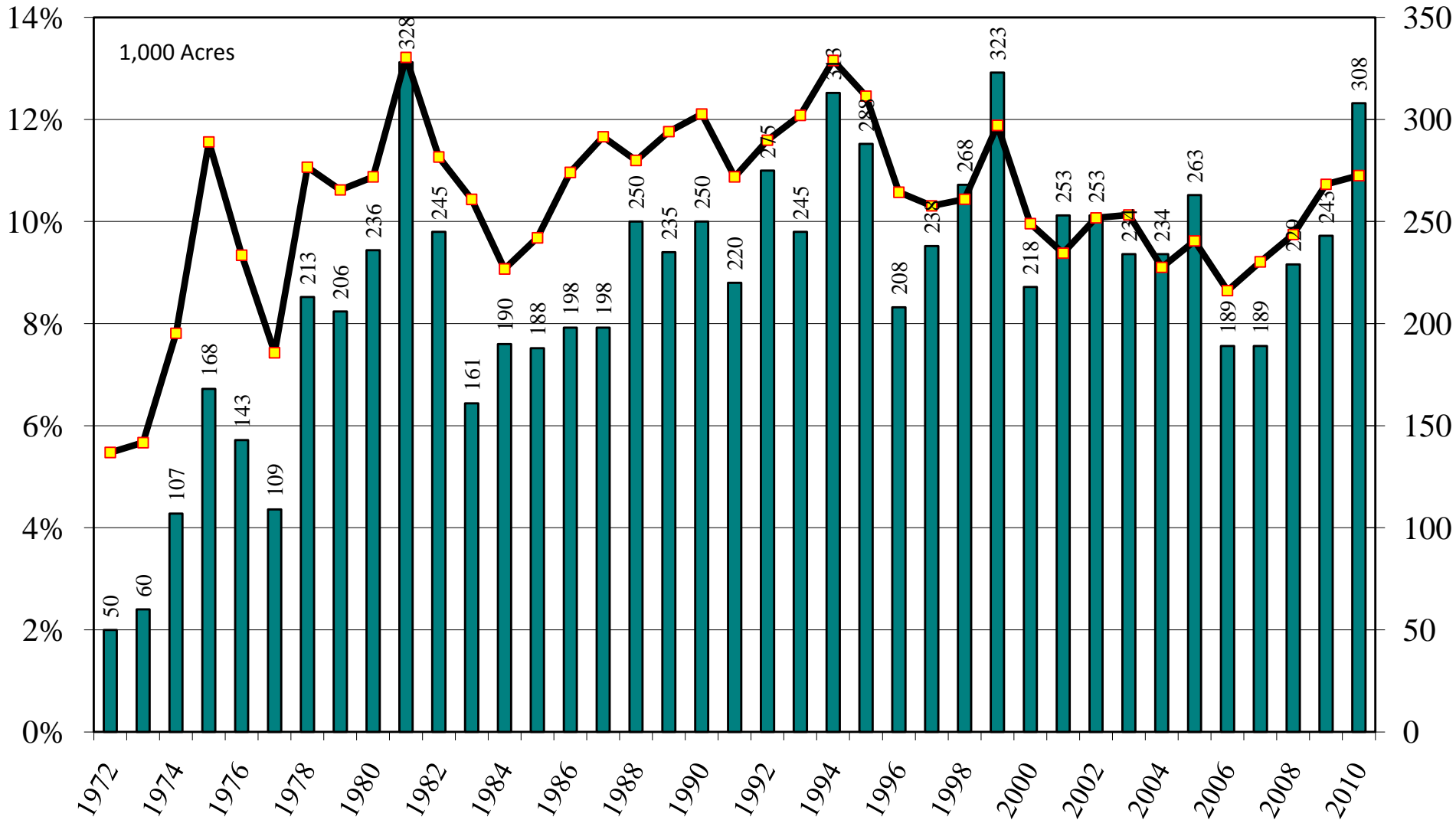
Louisiana Long Grain Rice Harvested Acres and Percent of U.S. Long Grain Harvested Acres, 1972-2010



Source: [NASS/USDA Data Set](#) and [Crop Production--Acreage--Supplement](#)

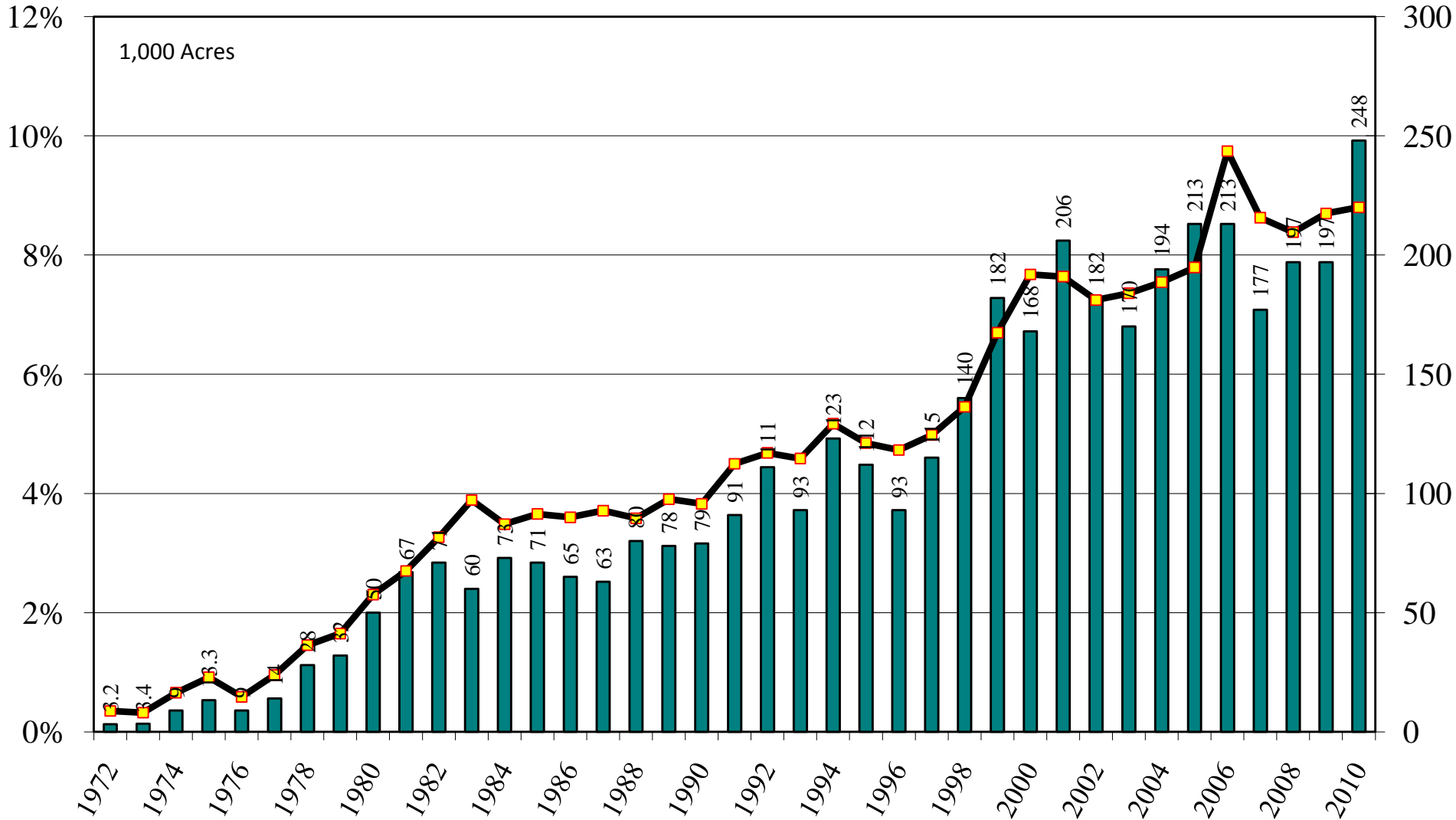
September 10, 2010

Mississippi Long Grain Rice Harvested Acres and Percent of U.S. Long Grain Harvested Acres, 1972-2010



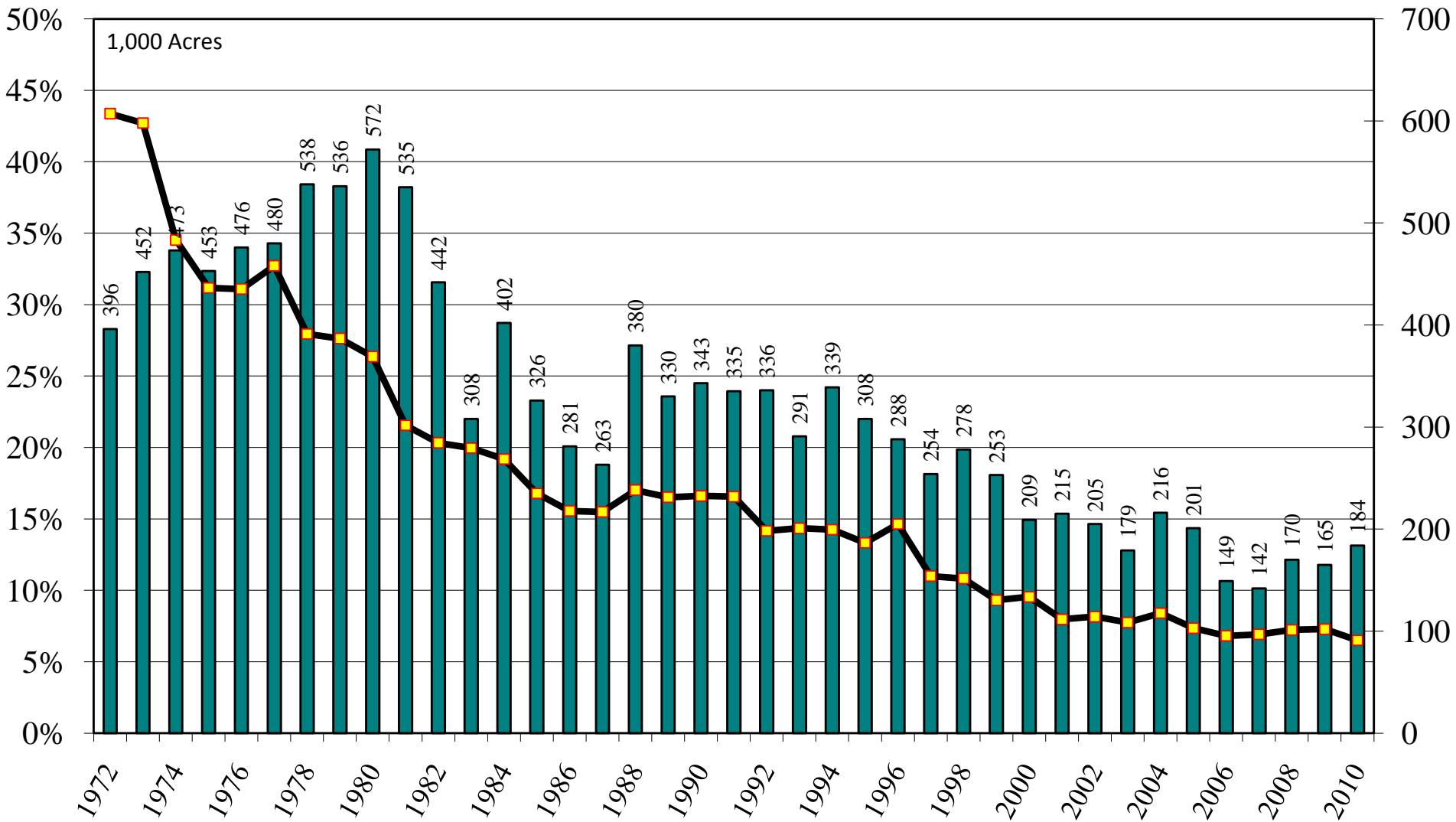
Source: [NASS/USDA Data Set](#) and [Crop Production--Acreage--Supplement](#)

Missouri Long Grain Rice Harvested Acres and Percent of U.S. Long Grain Harvested Acres, 1972-2010



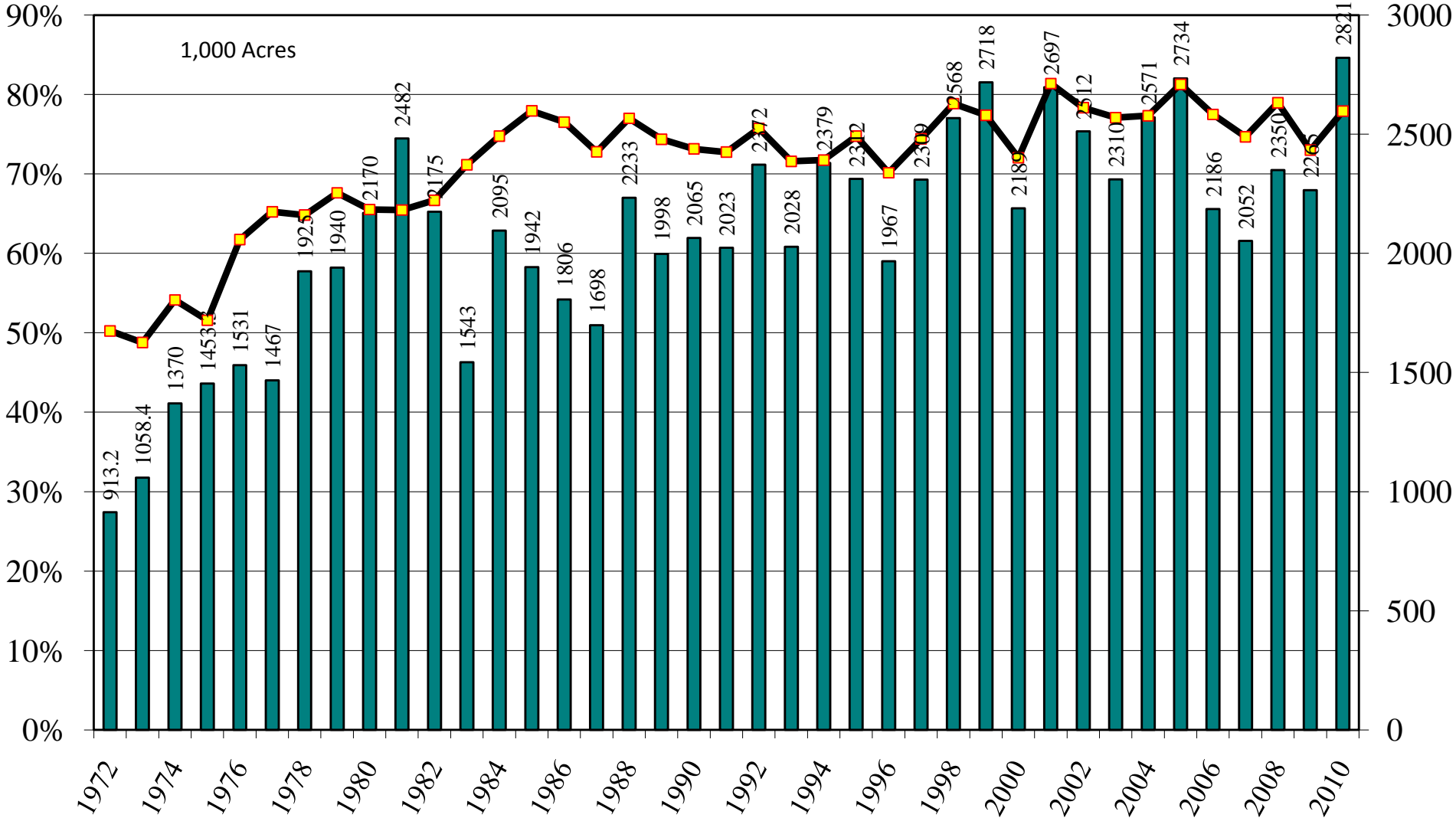
Source: [NASS/USDA Data Set](#) and [Crop Production--Acreage--Supplement](#)

Texas Long Grain Rice Harvested Acres and Percent of U.S. Long Grain Harvested Acres, 1972-2010



Source: [NASS/USDA Data Set](#) and [Crop Production--Acreage--Supplement](#)

U.S. Long Grain Rice Harvested Acres and Percent of U.S. All Rice Harvested Acres, 1972-2010

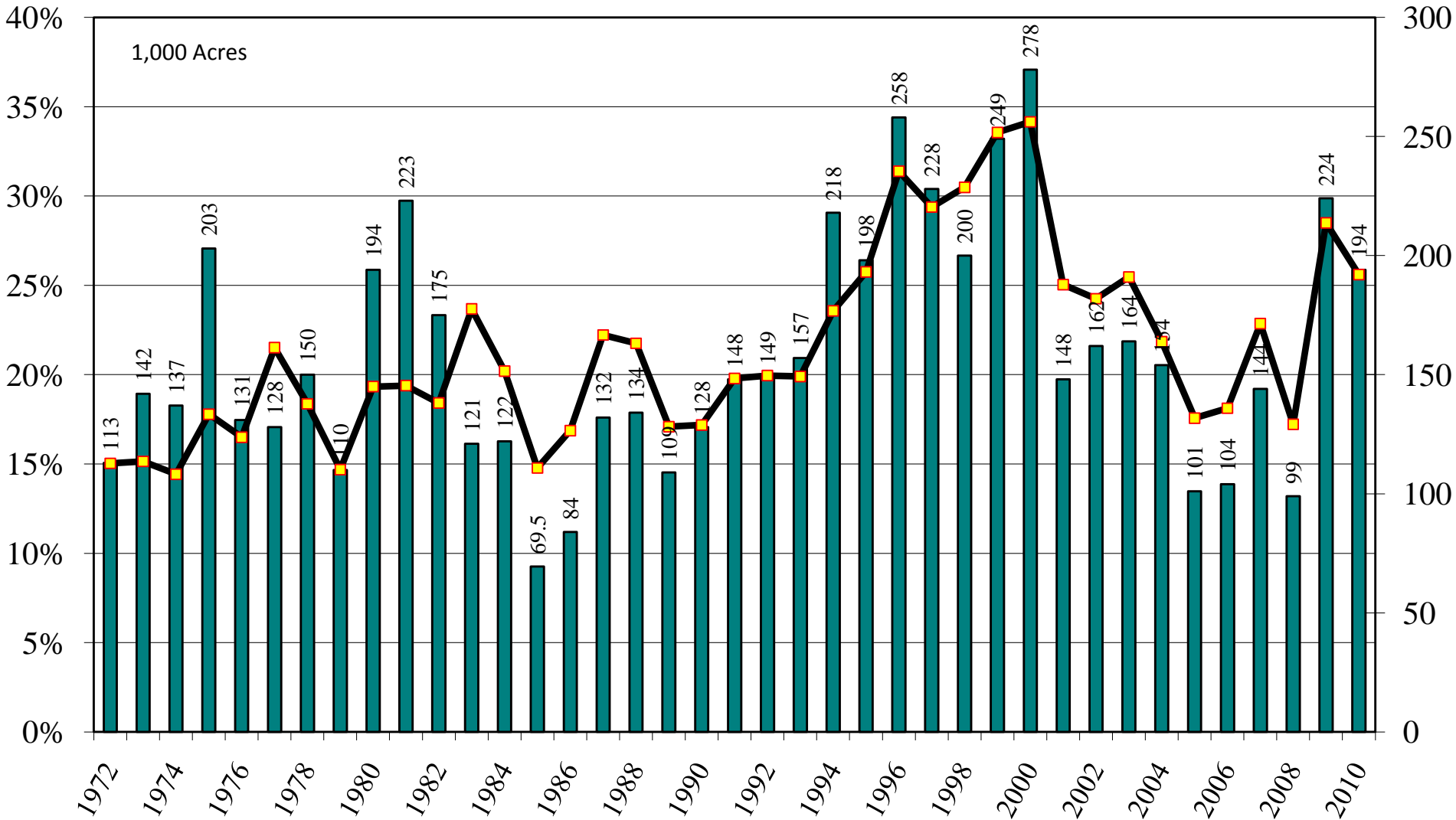


Source: [NASS/USDA Data Set](#) and [Crop Production--Acreage--Supplement](#)

USDA/NASS September 10, 2010 Acreage Report

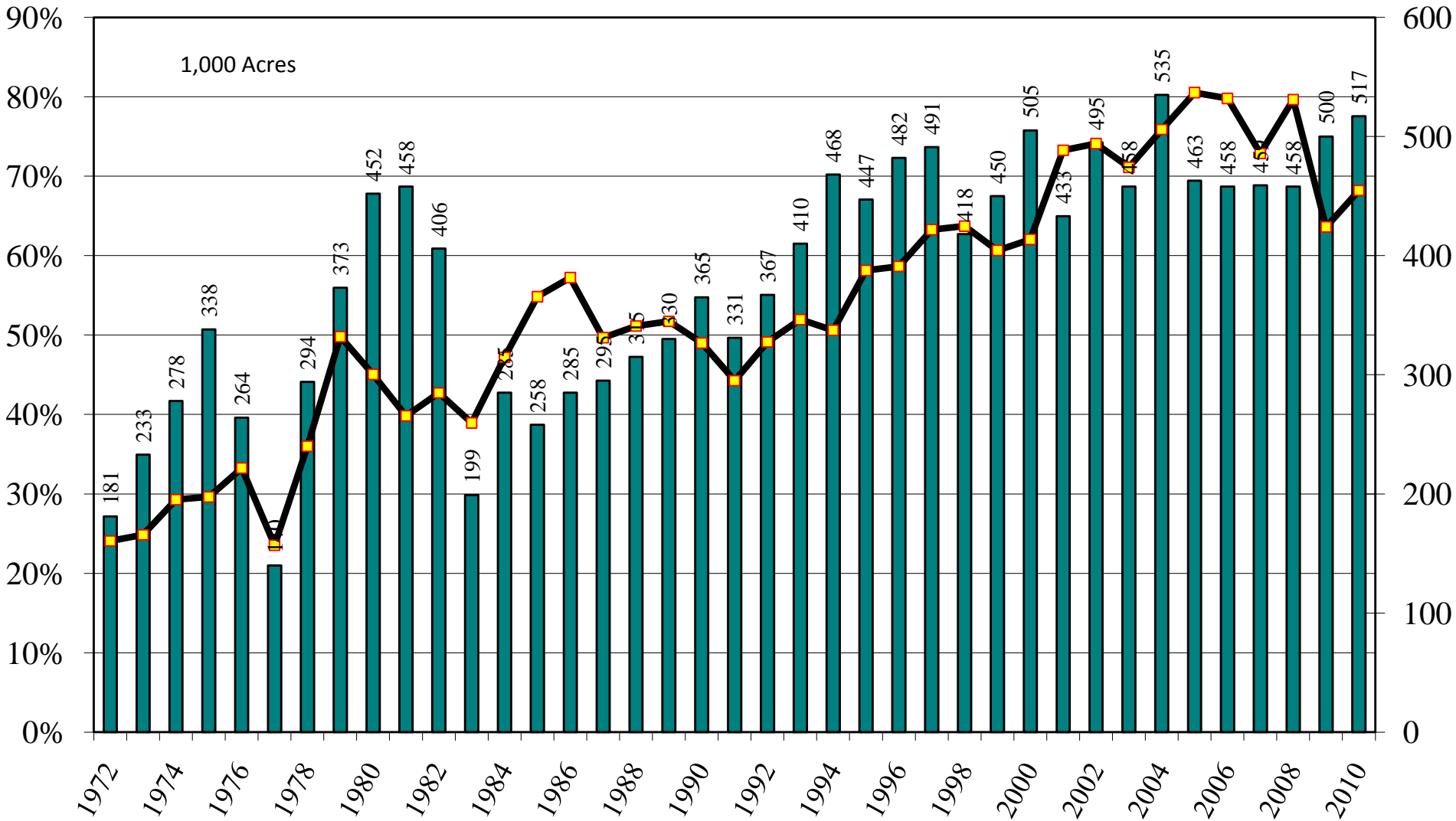
Rice: Medium Grain Harvested Acres 1972-2010

Arkansas Medium Grain Rice Harvested Acres and Percent of U.S. Medium Grain Harvested Acres, 1972-2010



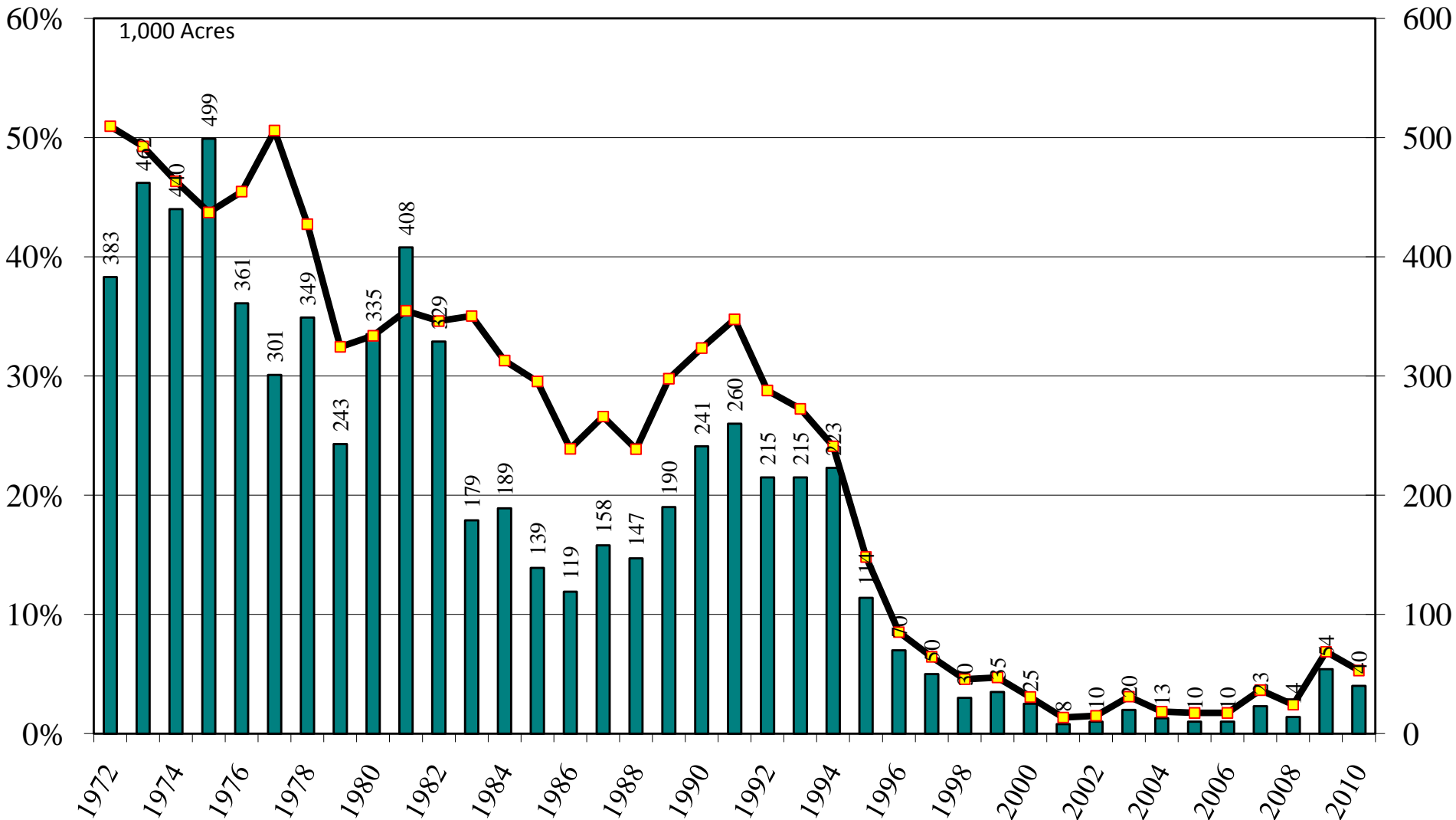
Source: [NASS/USDA Data Set](#) and [Crop Production--Acreage--Supplement](#)

California Medium Grain Rice Harvested Acres and Percent of U.S. Medium Grain Harvested Acres, 1972-2010



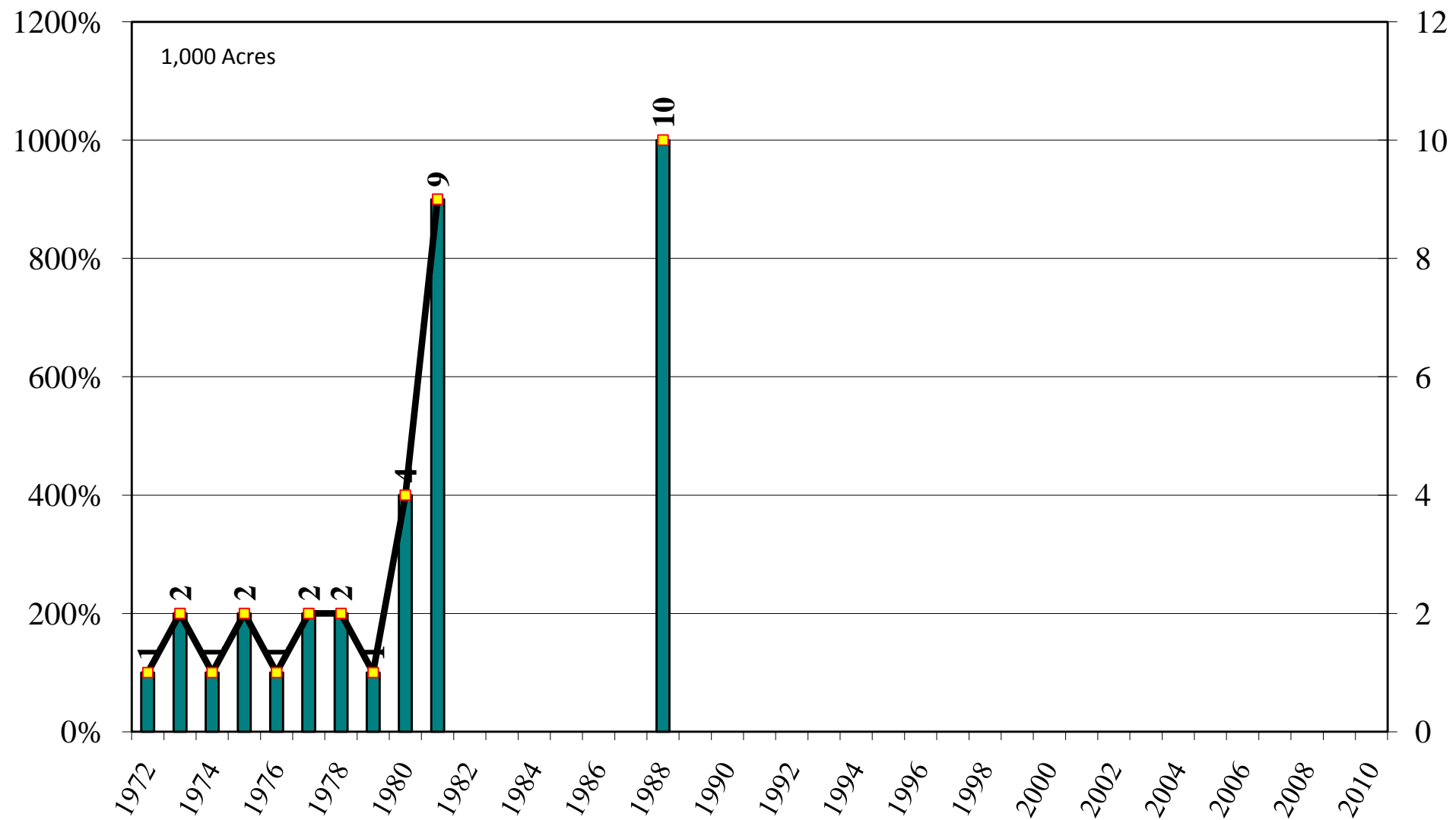
Source: [NASS/USDA Data Set](#) and [Crop Production--Acreage--Supplement](#)

Louisiana Medium Grain Rice Harvested Acres and Percent of U.S. Medium Grain Harvested Acres, 1972-2010



Source: [NASS/USDA Data Set](#) and [Crop Production--Acreage--Supplement](#)

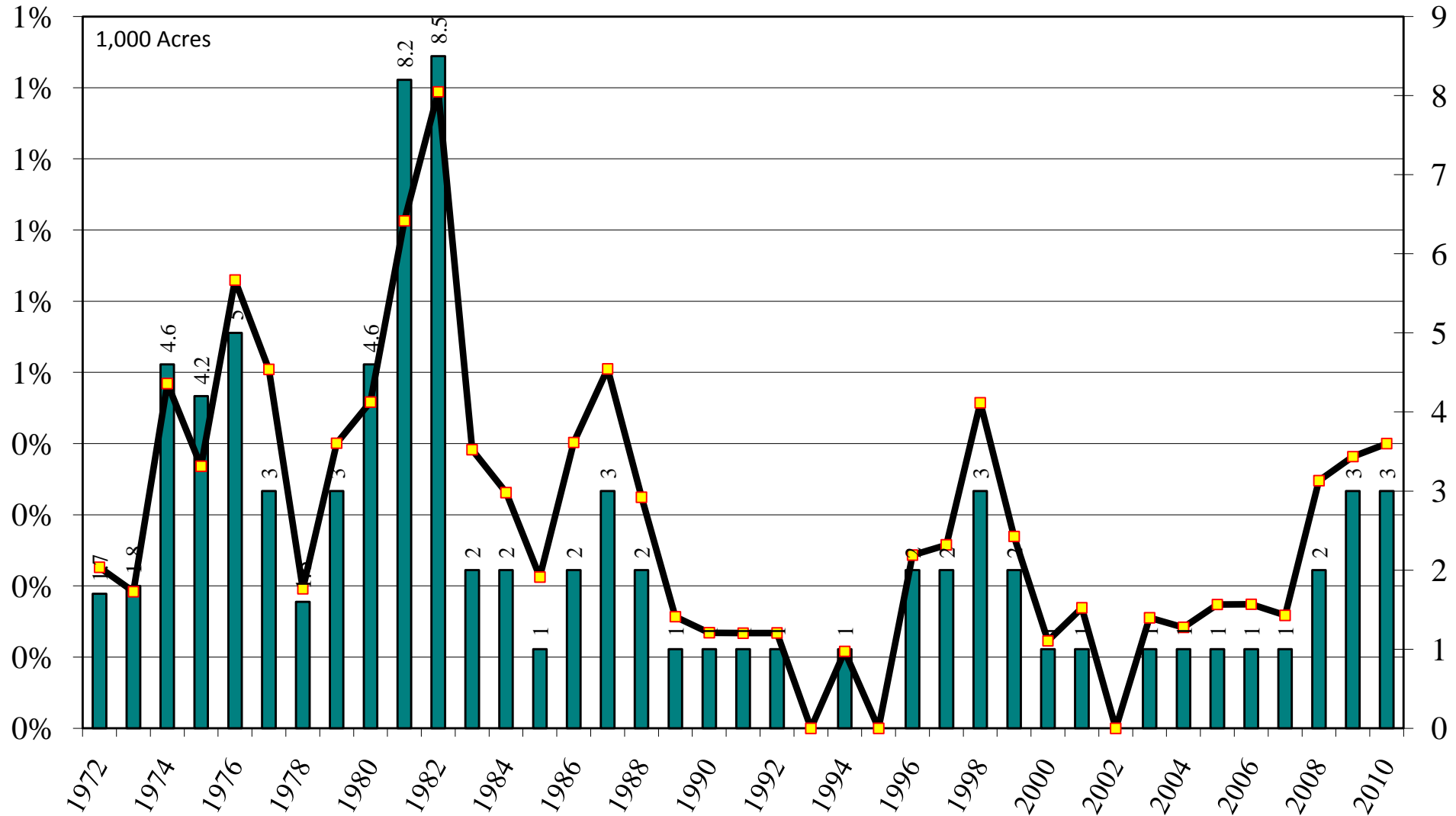
Mississippi Medium Grain Rice Harvested Acres and Percent of U.S. Medium Grain Harvested Acres, 1972-2010



Source: [NASS/USDA Data Set](#) and [Crop Production--Acreage--Supplement](#)

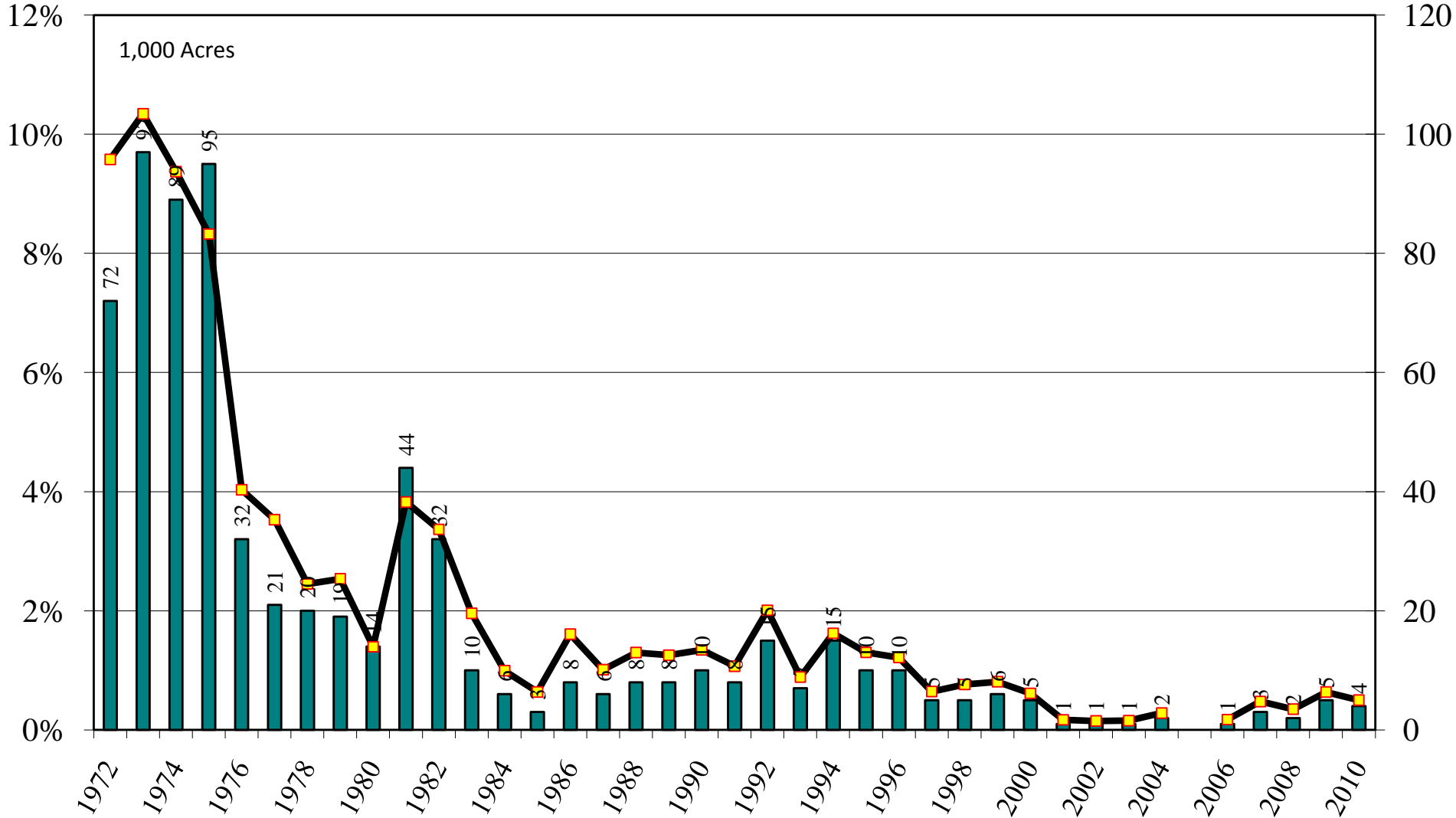
September 10, 2010

Missouri Medium Grain Rice Harvested Acres and Percent of U.S. Medium Grain Harvested Acres, 1972-2010



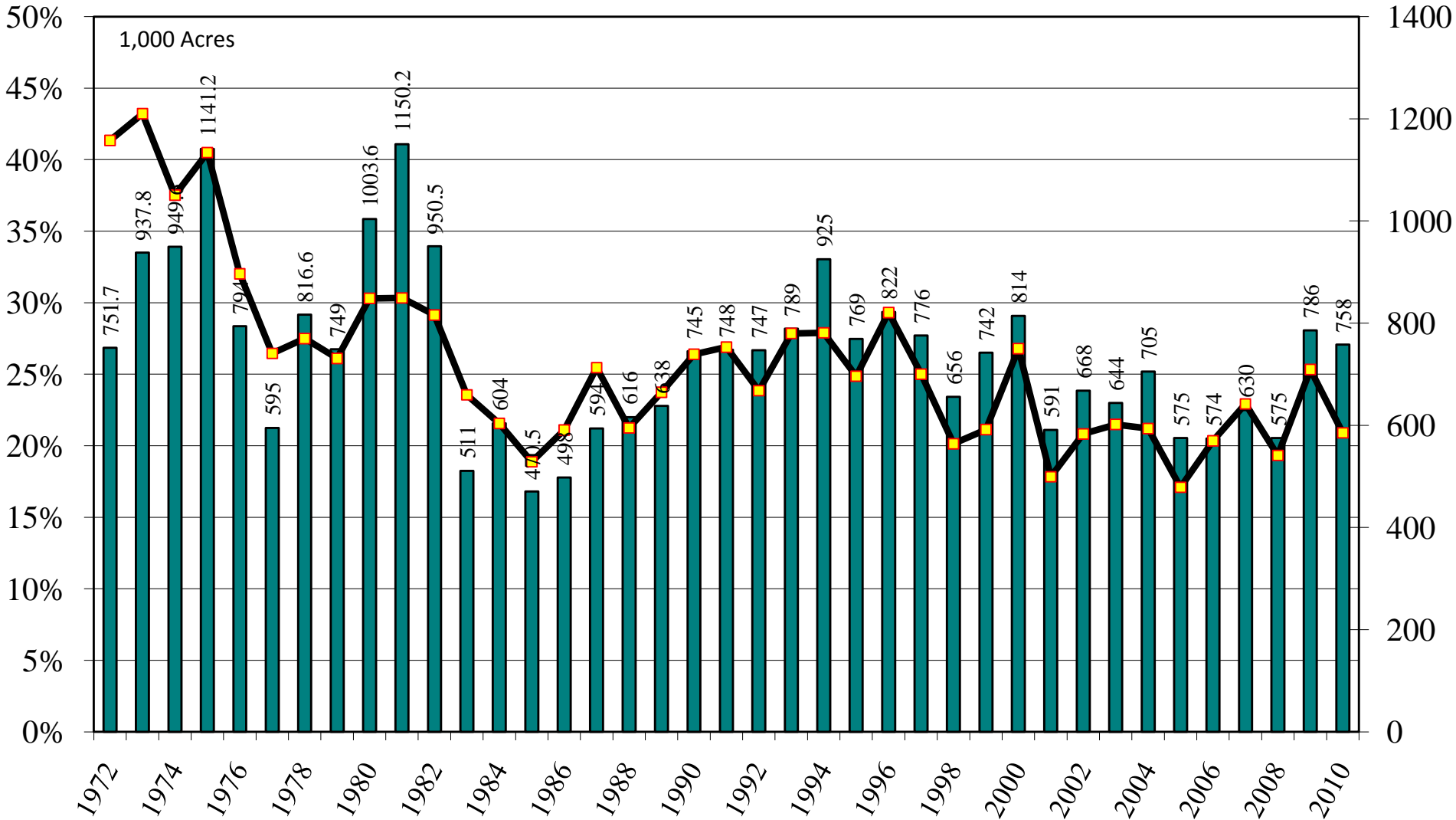
Source: [NASS/USDA Data Set](#) and [Crop Production--Acreage--Supplement](#)

Texas Medium Grain Rice Harvested Acres and Percent of U.S. Medium Grain Harvested Acres, 1972-2010



Source: [NASS/USDA Data Set](#) and [Crop Production--Acreage--Supplement](#)

U.S. Medium Grain Rice Harvested Acres and Percent of U.S. All Rice Harvested Acres, 1972-2010

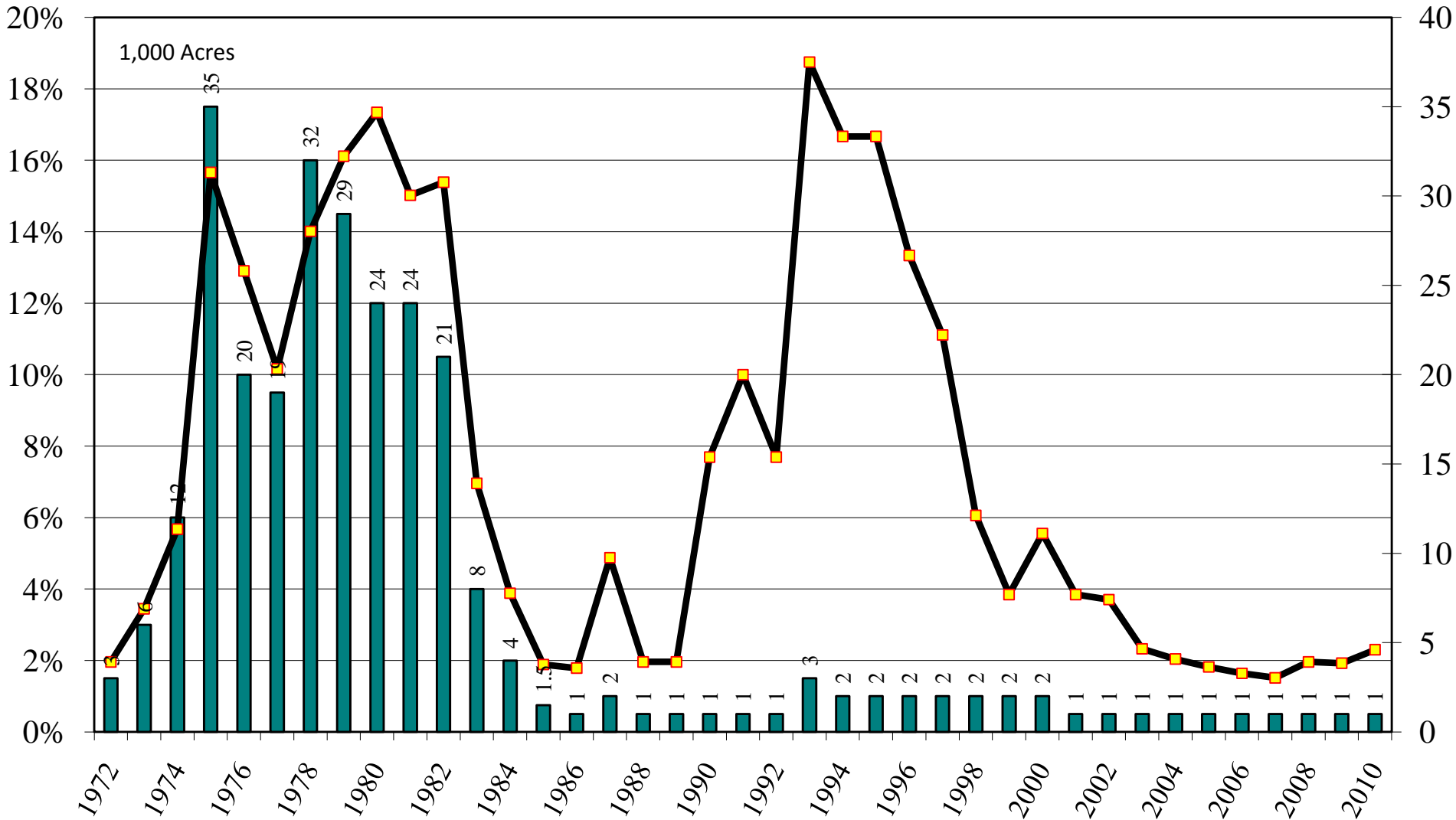


Source: [NASS/USDA Data Set](#) and [Crop Production--Acreage--Supplement](#)

USDA/NASS September 10, 2010 Acreage Report

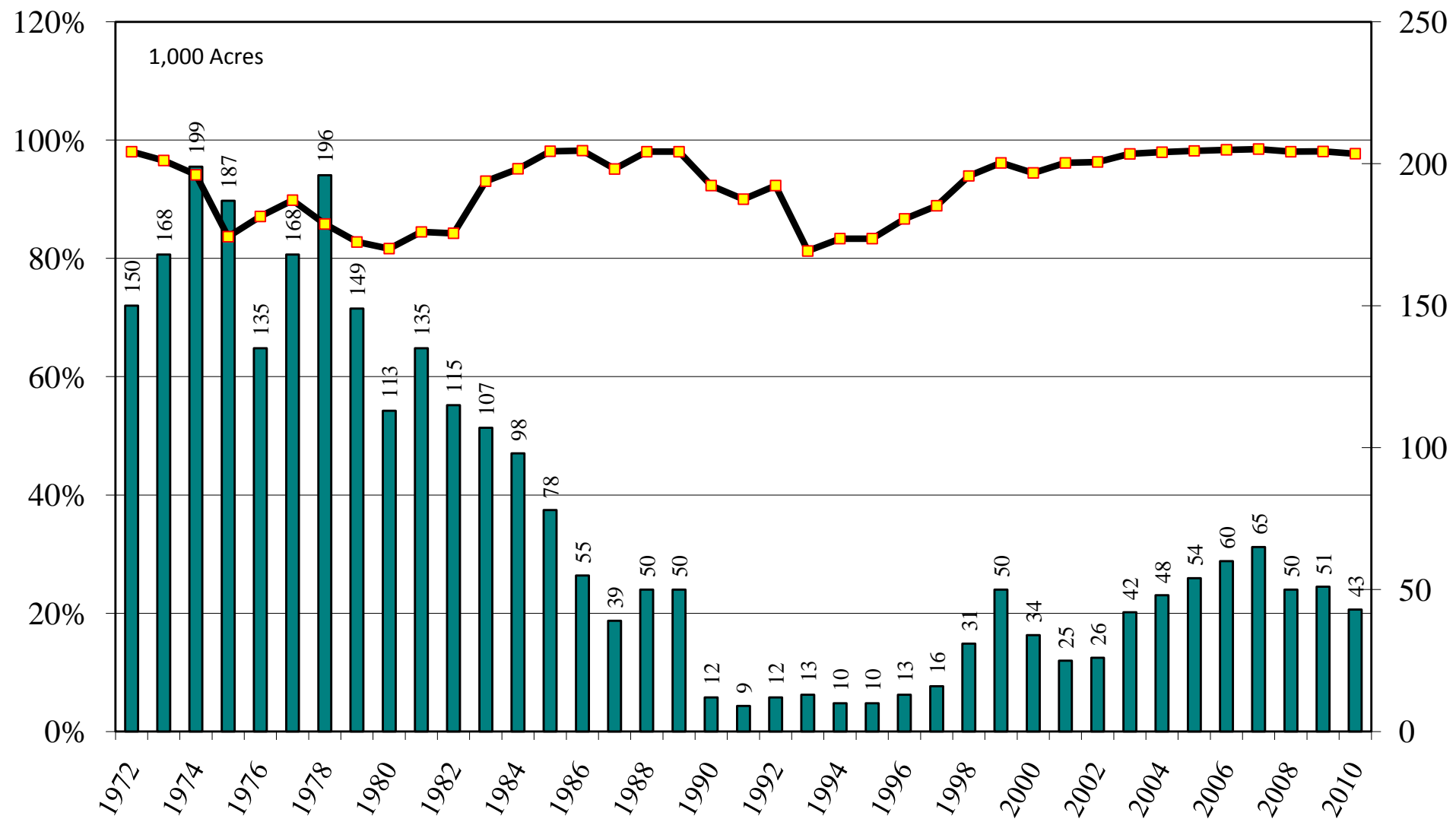
Rice: Short Grain Harvested Acres 1972-2010

Arkansas Short Grain Rice Harvested Acres and Percent of U.S. Short Grain Harvested Acres, 1972-2010



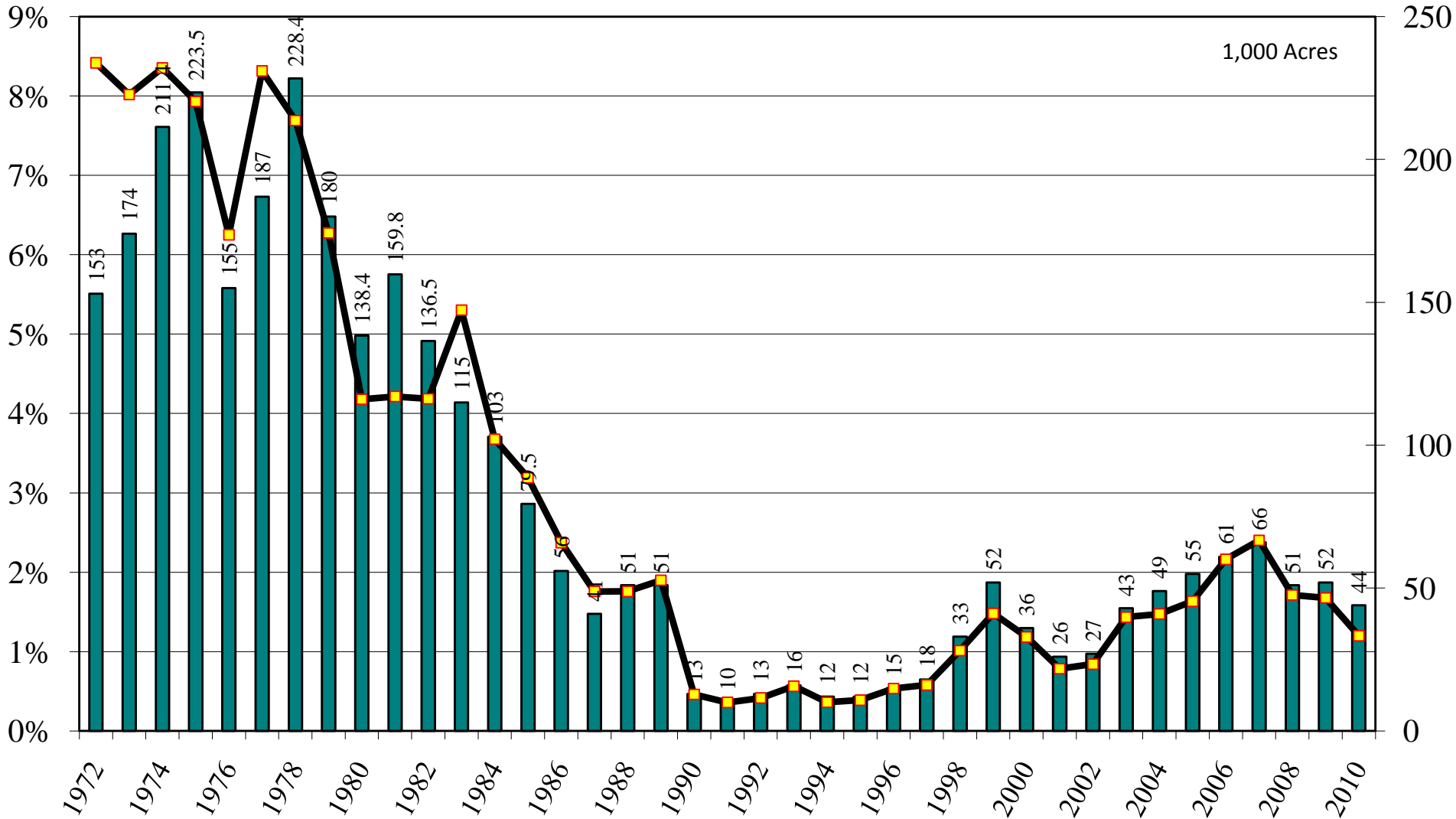
Source: [NASS/USDA Data Set](#) and [Crop Production--Acreage--Supplement](#)

California Short Grain Rice Harvested Acres and Percent of U.S. Short Grain Harvested Acres, 1972-2010



Source: [NASS/USDA Data Set](#) and [Crop Production--Acreage--Supplement](#)

U.S. Short Grain Rice Harvested Acres and Percent of U.S. All Rice Harvested Acres, 1972-2010

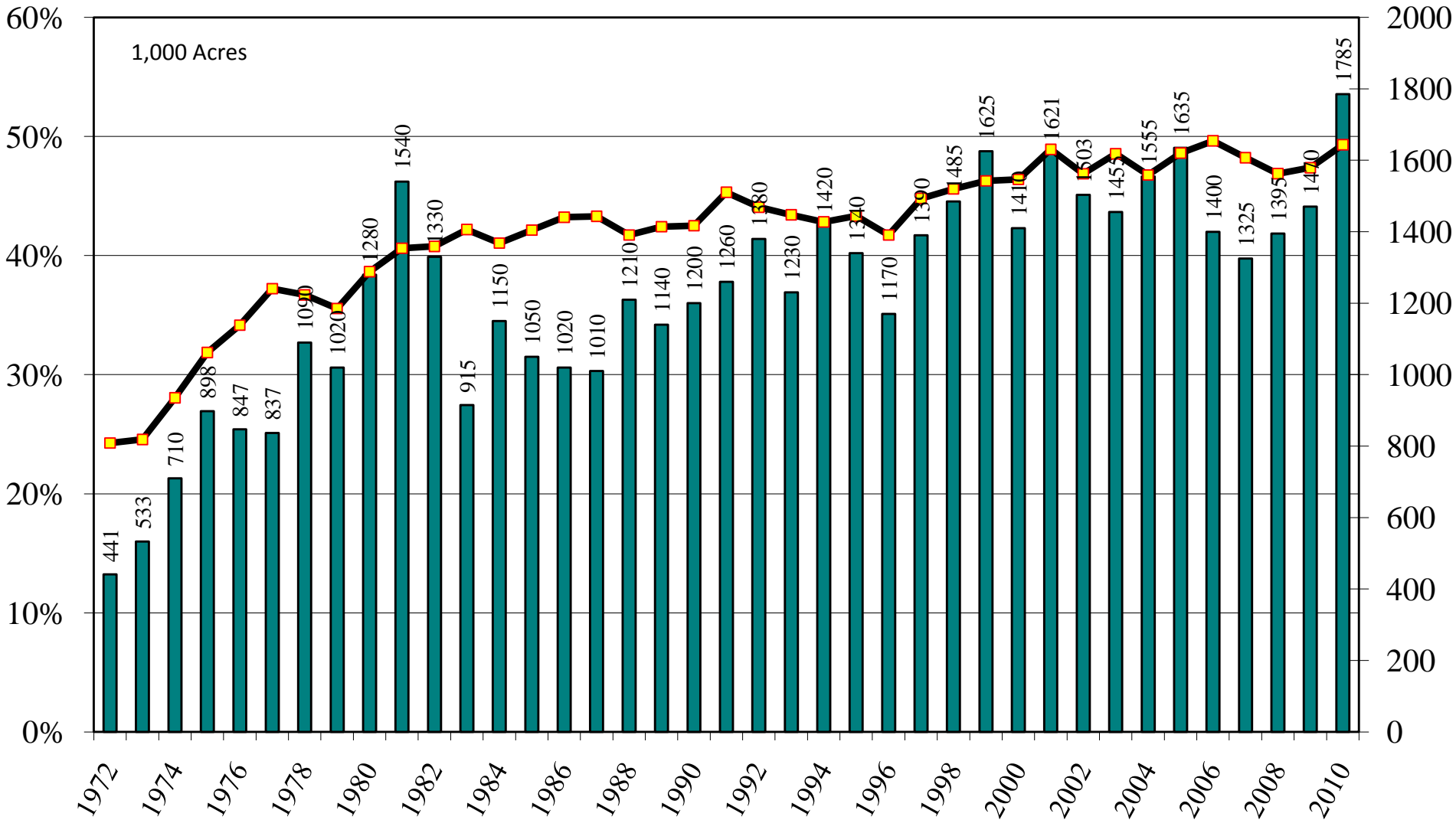


Source: [NASS/USDA Data Set](#) and [Crop Production--Acreage--Supplement](#)

USDA/NASS September 10, 2010 Acreage Report

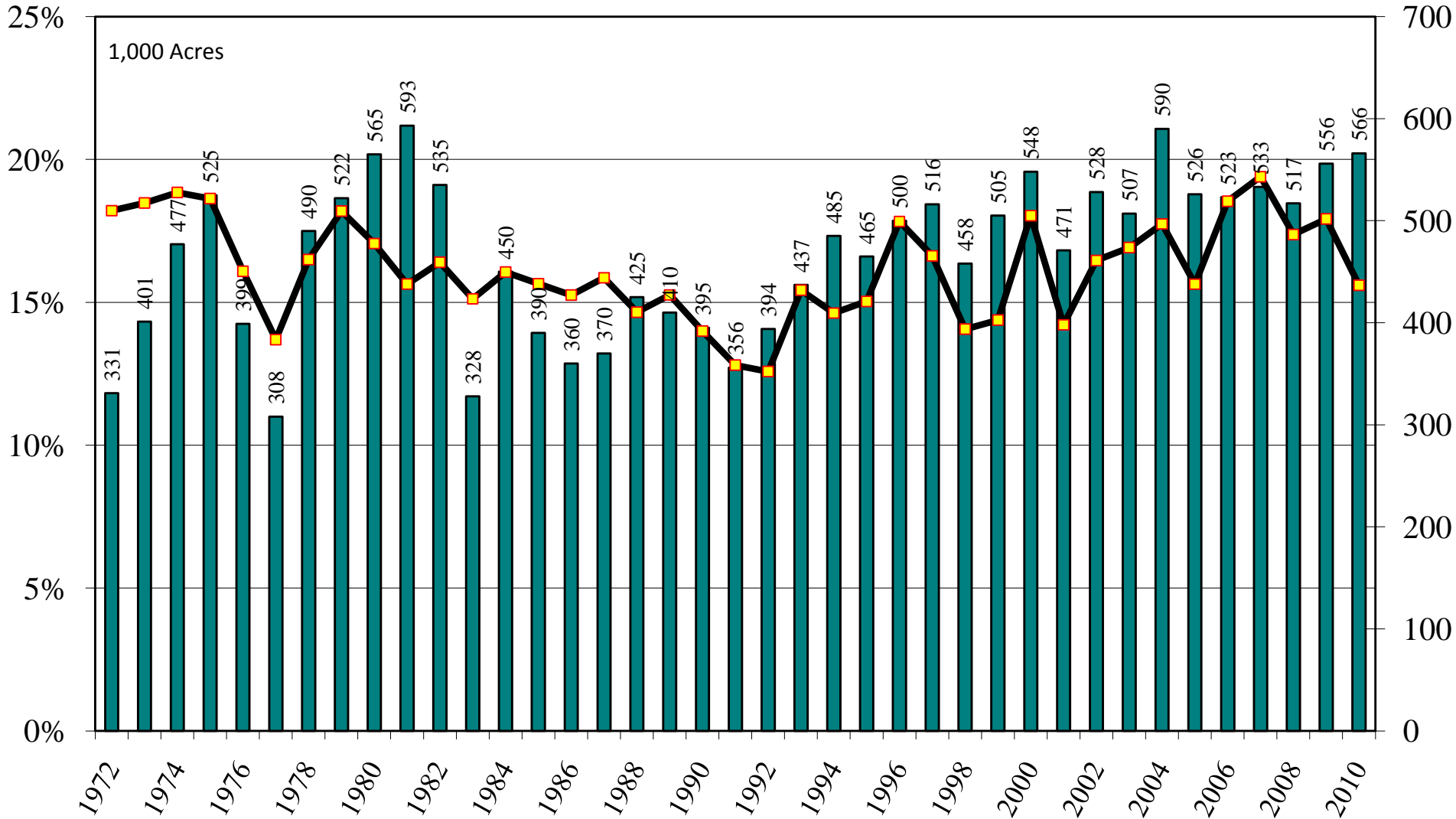
Rice: All Harvested Acres 1972-2010

Arkansas All Rice Harvested Acres and Percent of U.S. Harvested Acres, 1972-2010



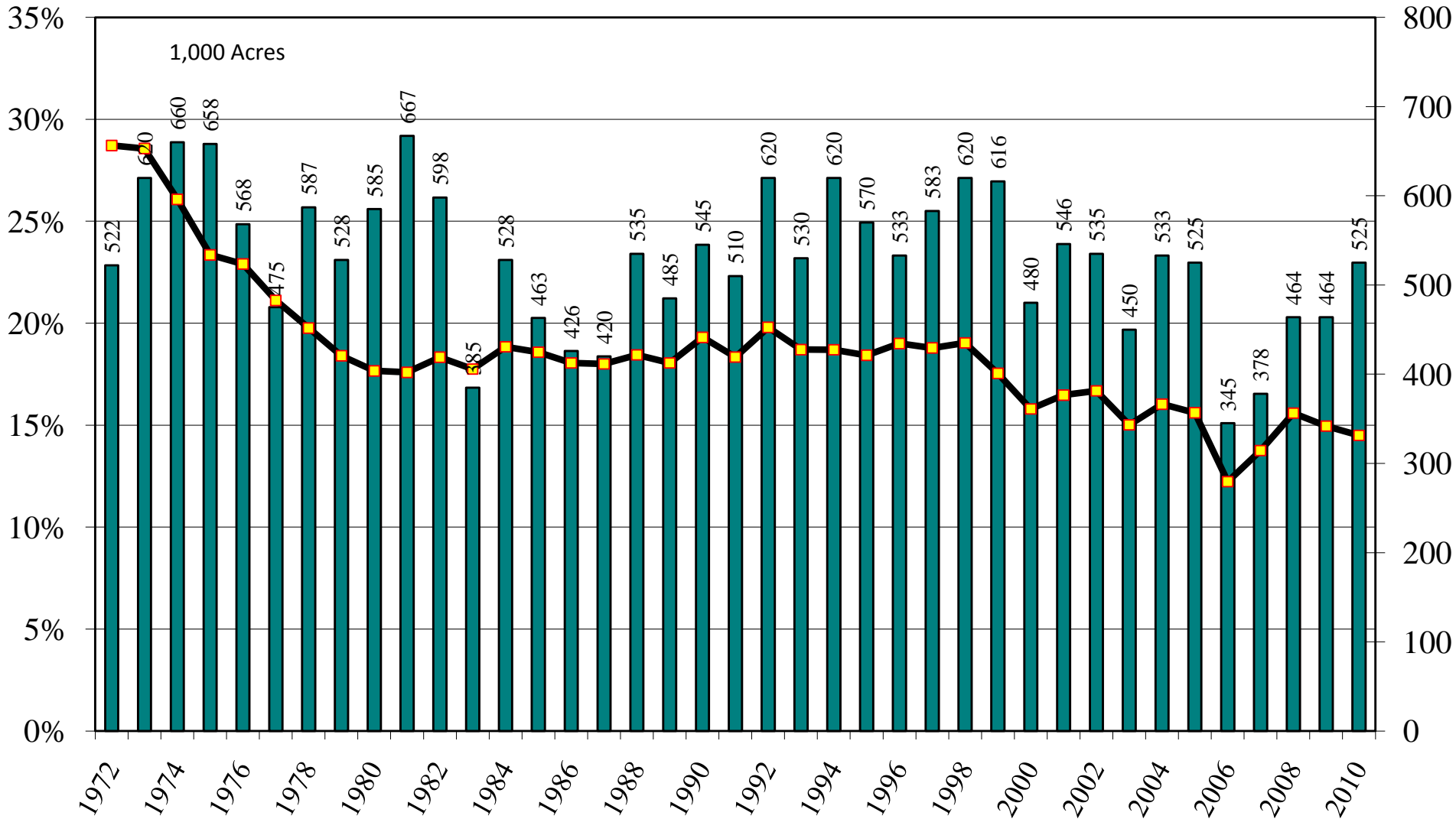
Source: [NASS/USDA Data Set](#) and [Crop Production--Acreage--Supplement](#)

California All Rice Harvested Acres and Percent of U.S. Harvested Acres, 1972-2010



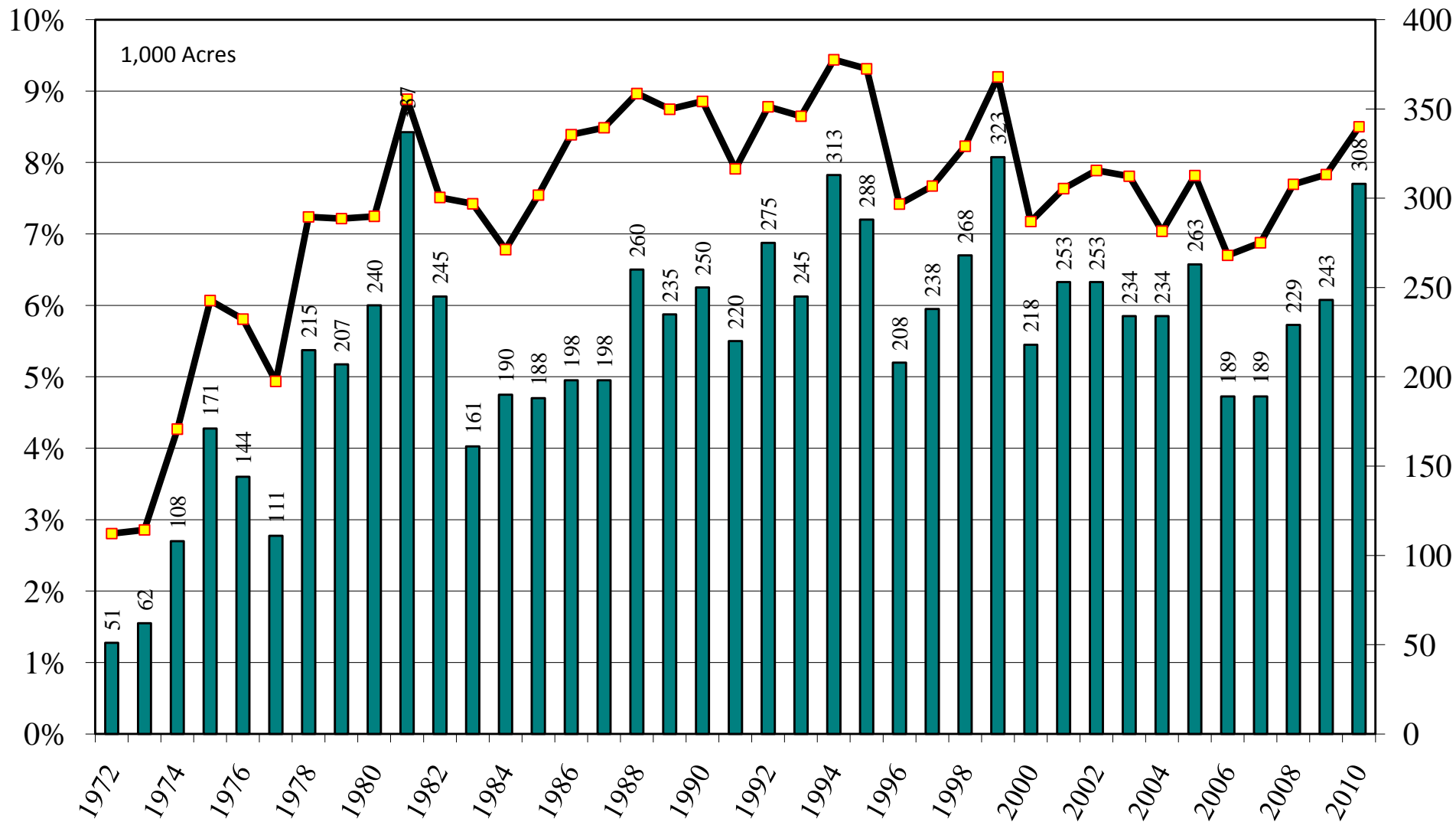
Source: [NASS/USDA Data Set](#) and [Crop Production--Acreage--Supplement](#)

Louisiana All Rice Harvested Acres and Percent of U.S. Harvested Acres, 1972-2010



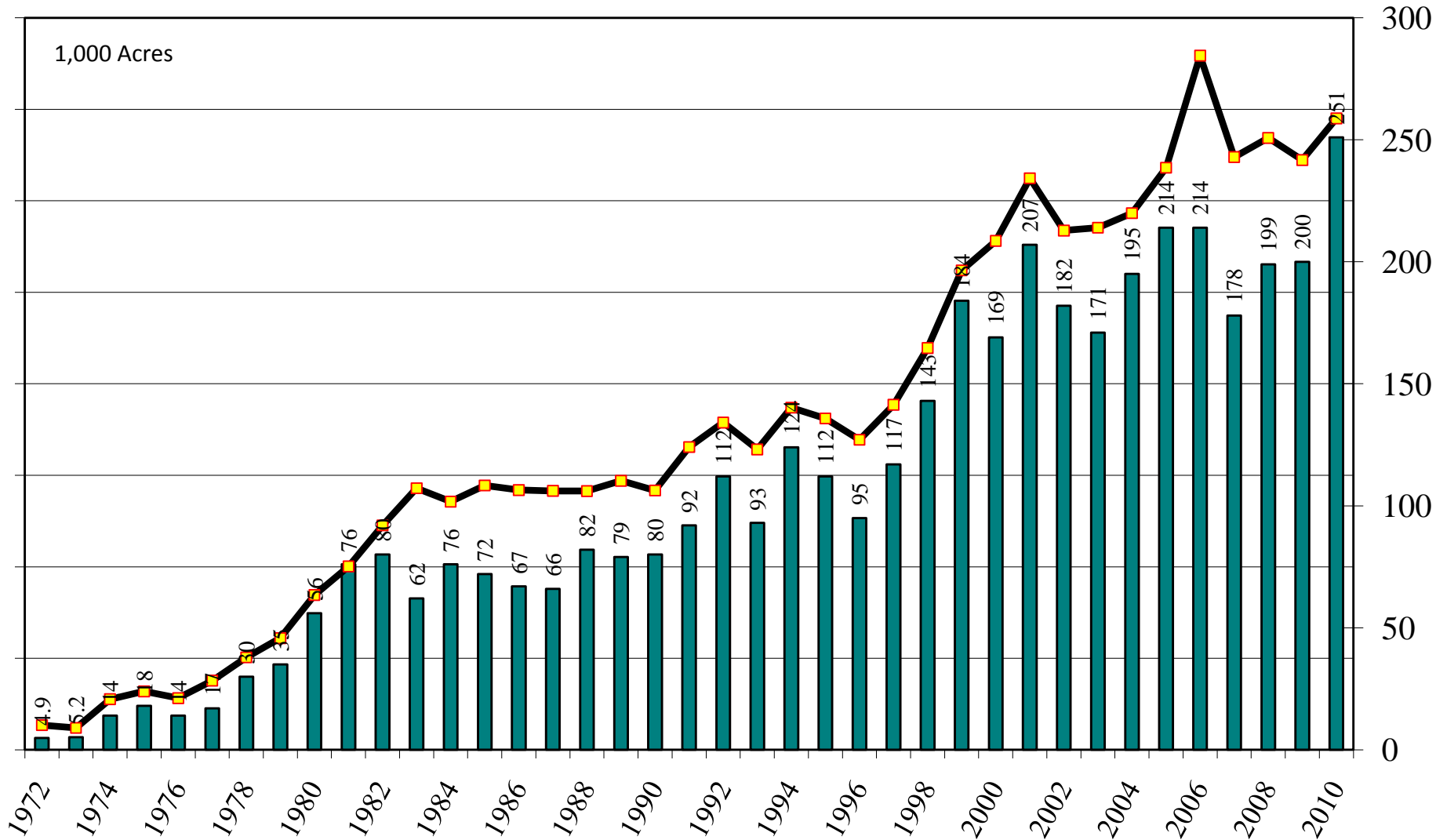
Source: [NASS/USDA Data Set](#) and [Crop Production--Acreage--Supplement](#)

Mississippi All Rice Harvested Acres and Percent of U.S. Harvested Acres, 1972-2010



Source: [NASS/USDA Data Set](#) and [Crop Production--Acreage--Supplement](#)

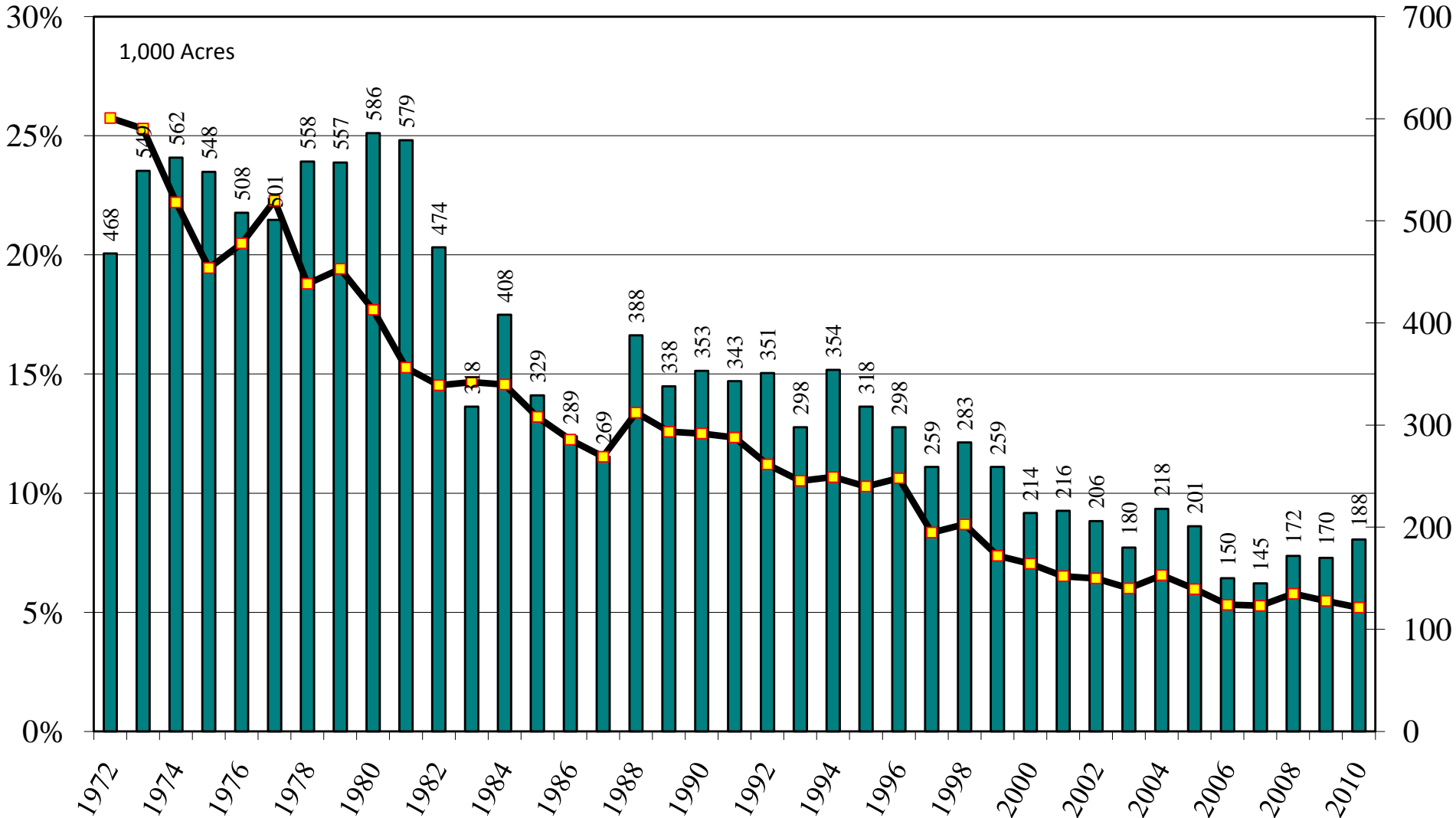
Missouri All Rice Harvested Acres and Percent of U.S. Harvested Acres, 1972-2010



Source: [NASS/USDA Data Set](#) and [Crop Production--Acreage--Supplement](#)

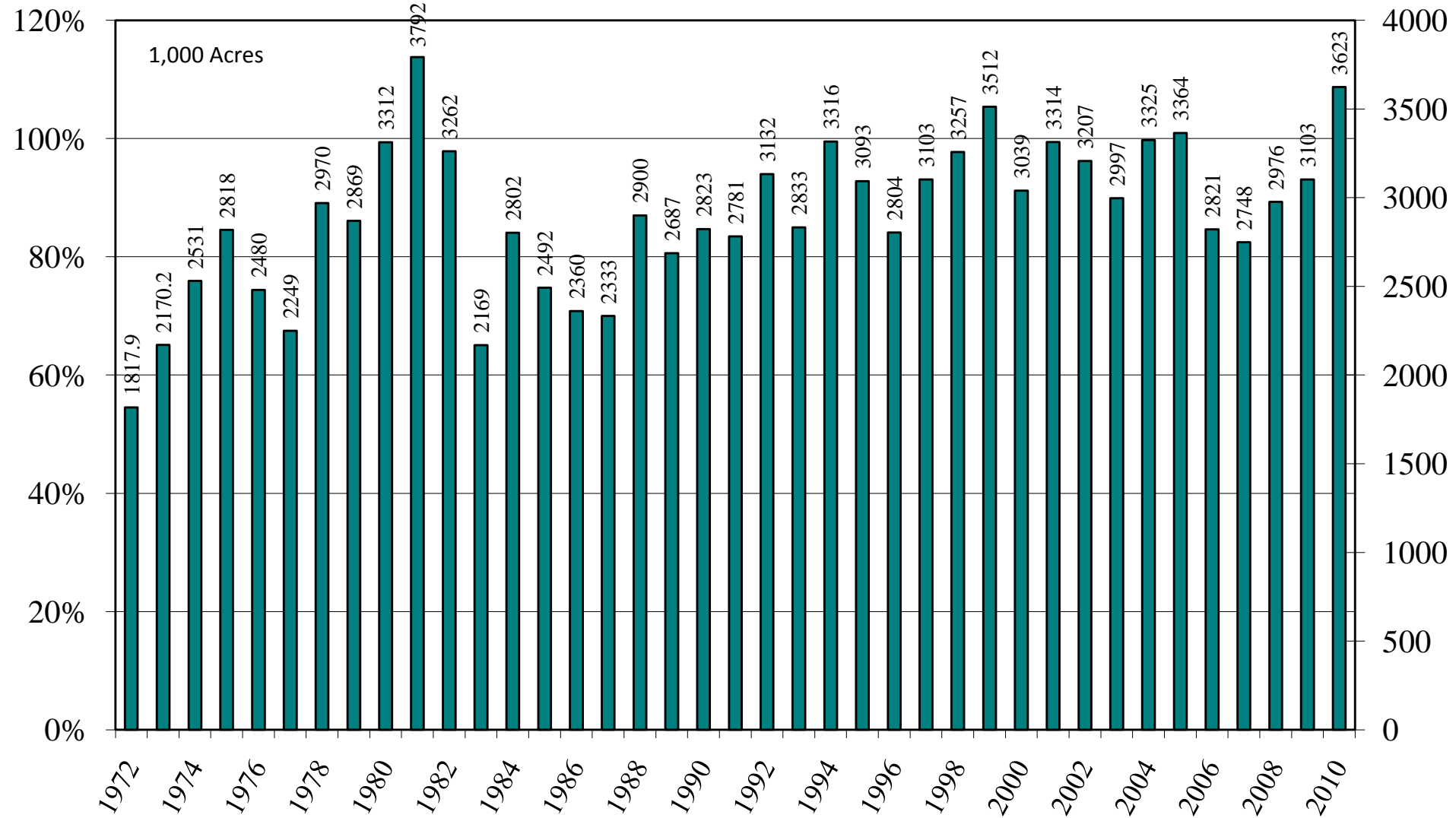
September 10, 2010

Texas All Rice Harvested Acres and Percent of U.S. Harvested Acres, 1972-2010



Source: [NASS/USDA Data Set](#) and [Crop Production--Acreage--Supplement](#)

U.S. All Rice Harvested Acres, 1972-2010



Source: [NASS/USDA Data Set](#) and [Crop Production--Acreage--Supplement](#)