

# **2011 U.S. and State Rice Acreage**

## **Slide Show**

**June 30, 2011**

**By**

**Robert Coats, Ph.D.**

**Extension Economist and Professor - Economics**

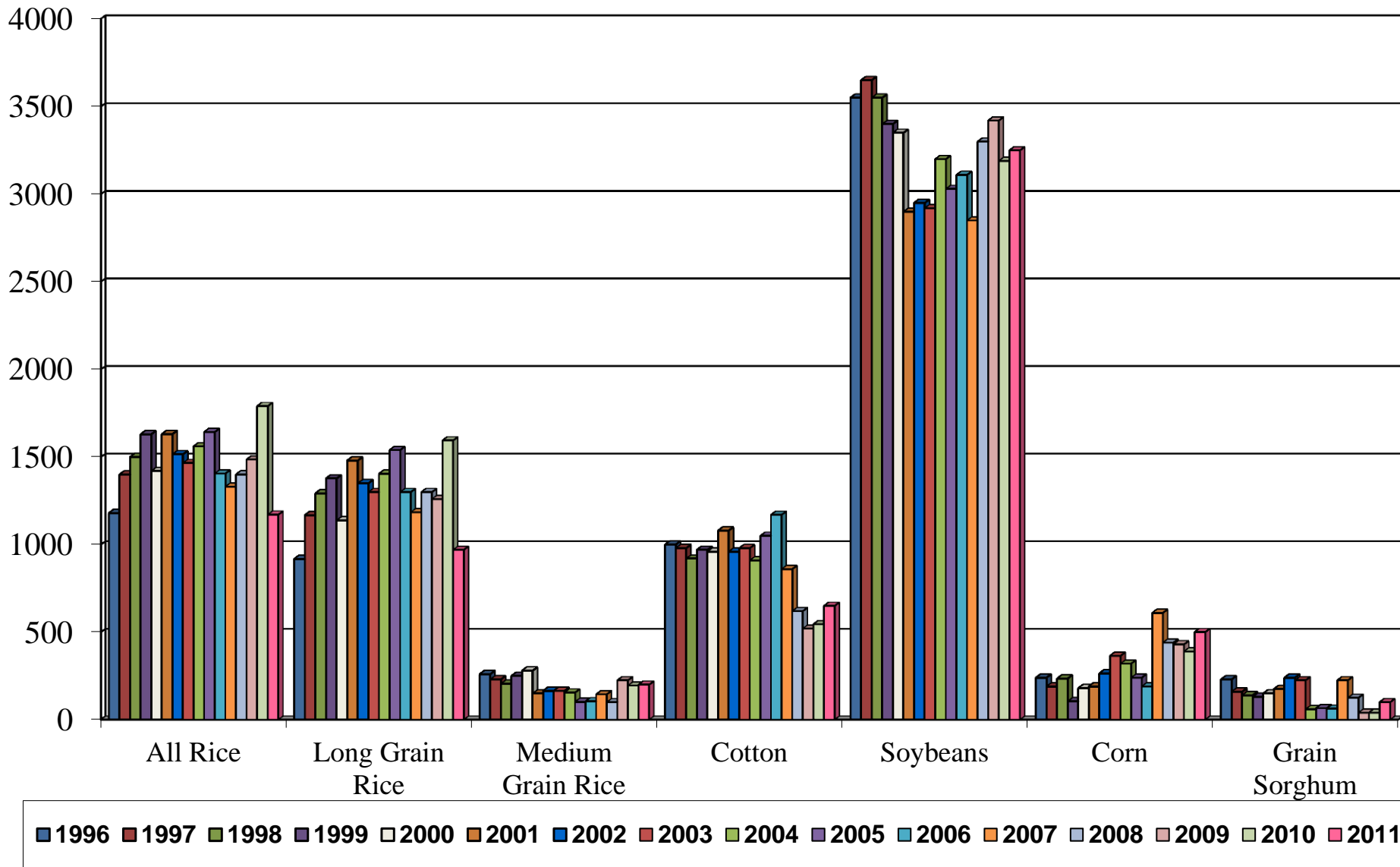
**Department of Agricultural Economics and Agribusiness**

**Division of Agriculture**

**University of Arkansas**

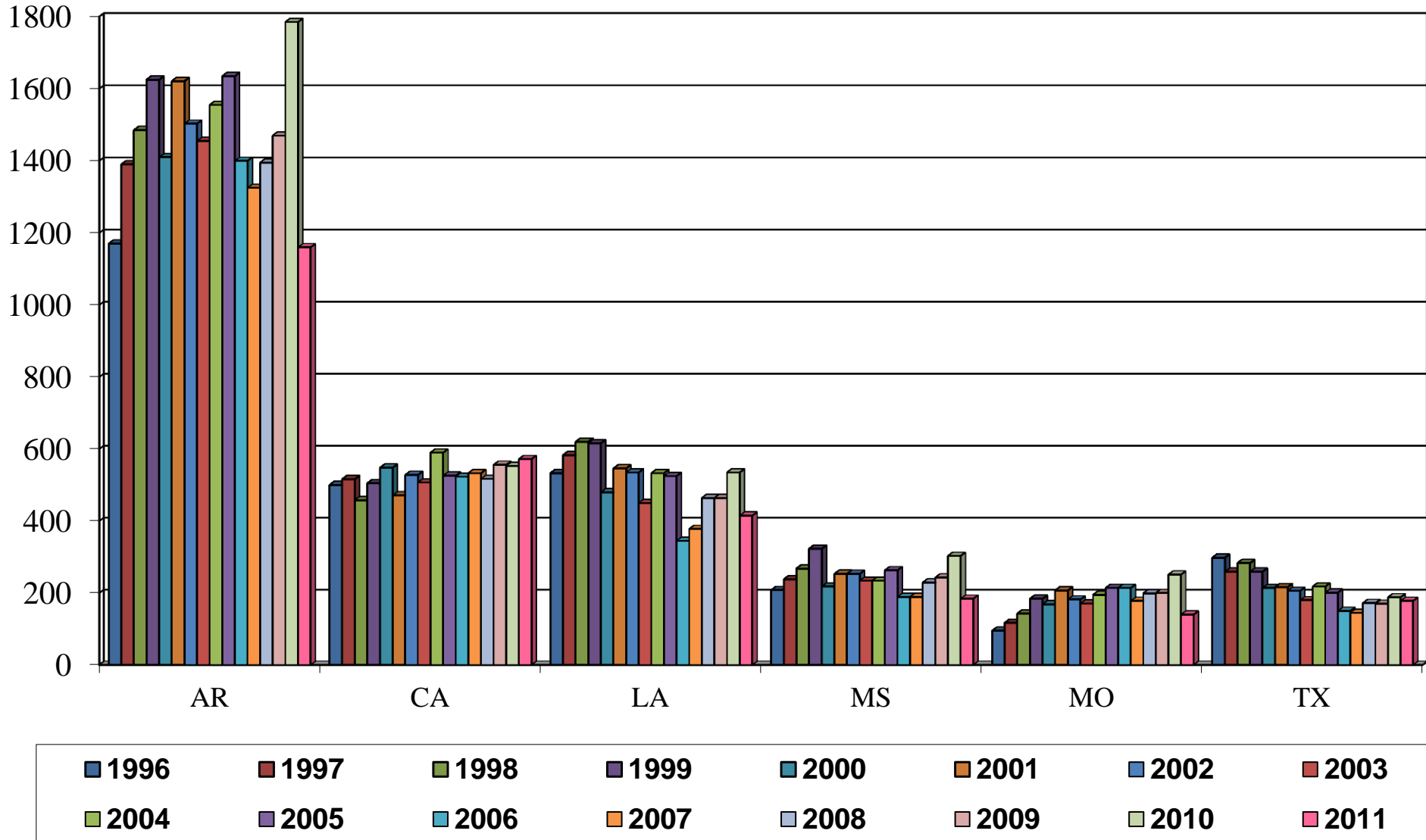
# Arkansas 1996-2011 Planted Acreage

## Thousand Acres

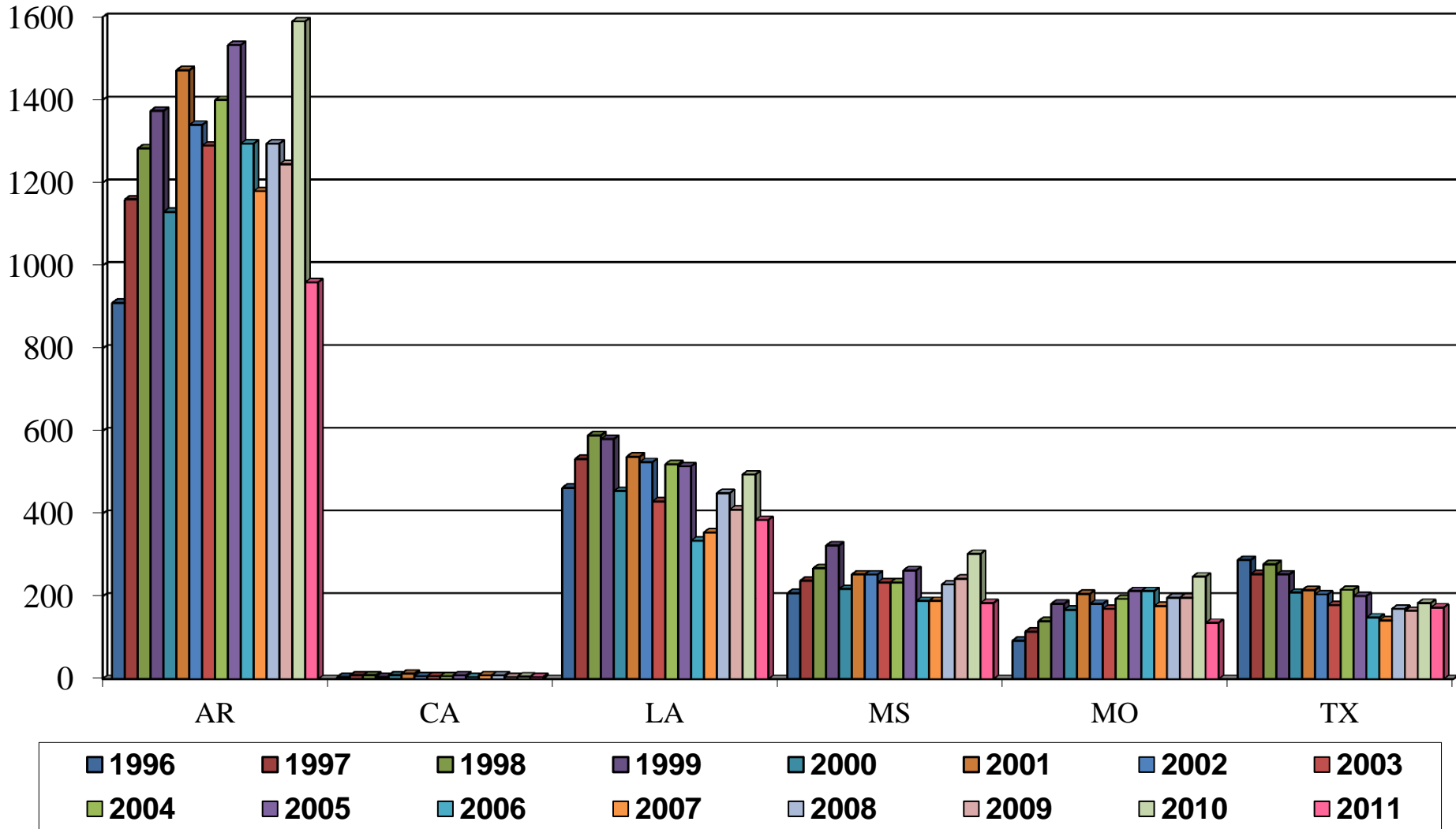


# State Rice Data

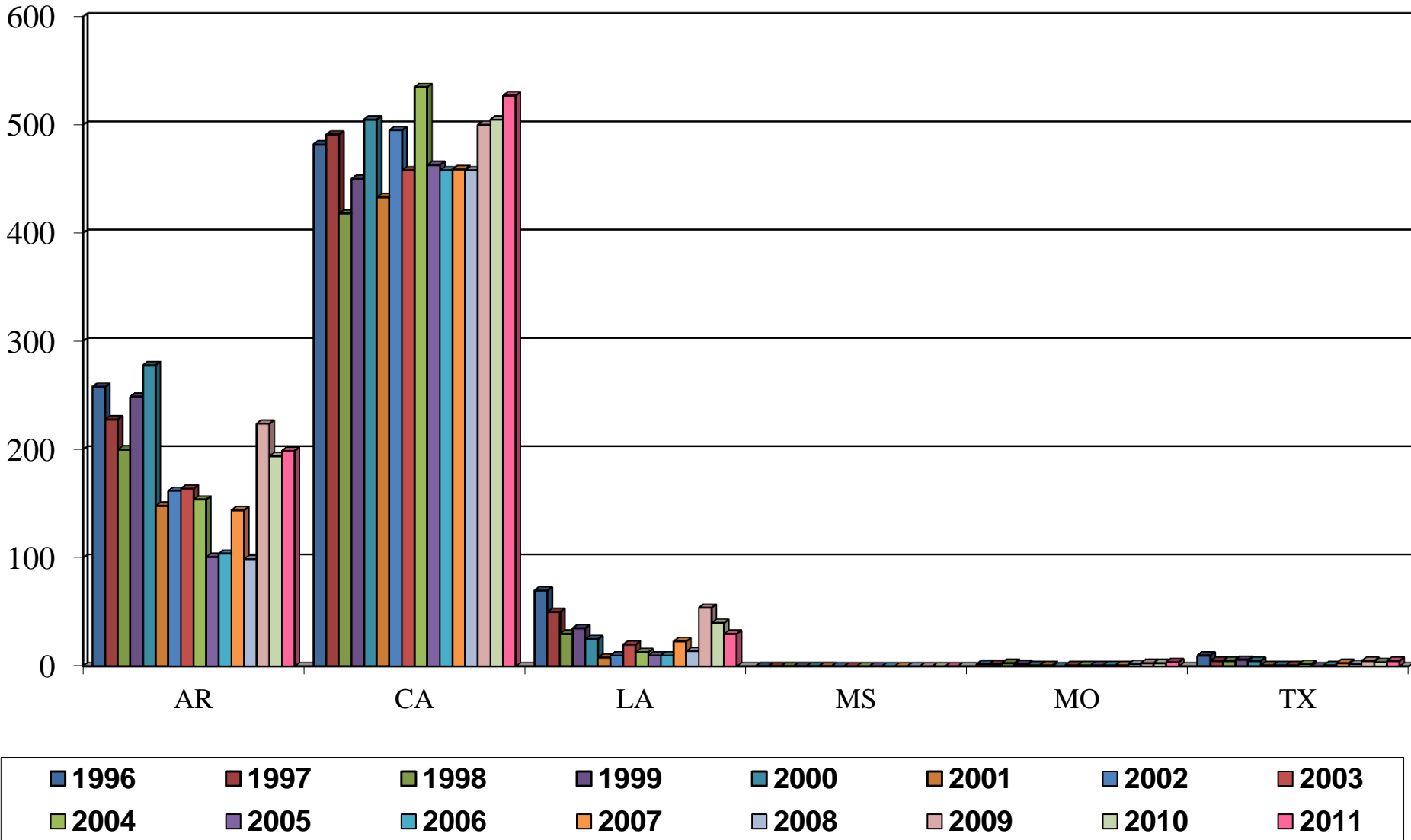
# U.S. All Rice Harvested By State 1996-2011, Thousand Acres



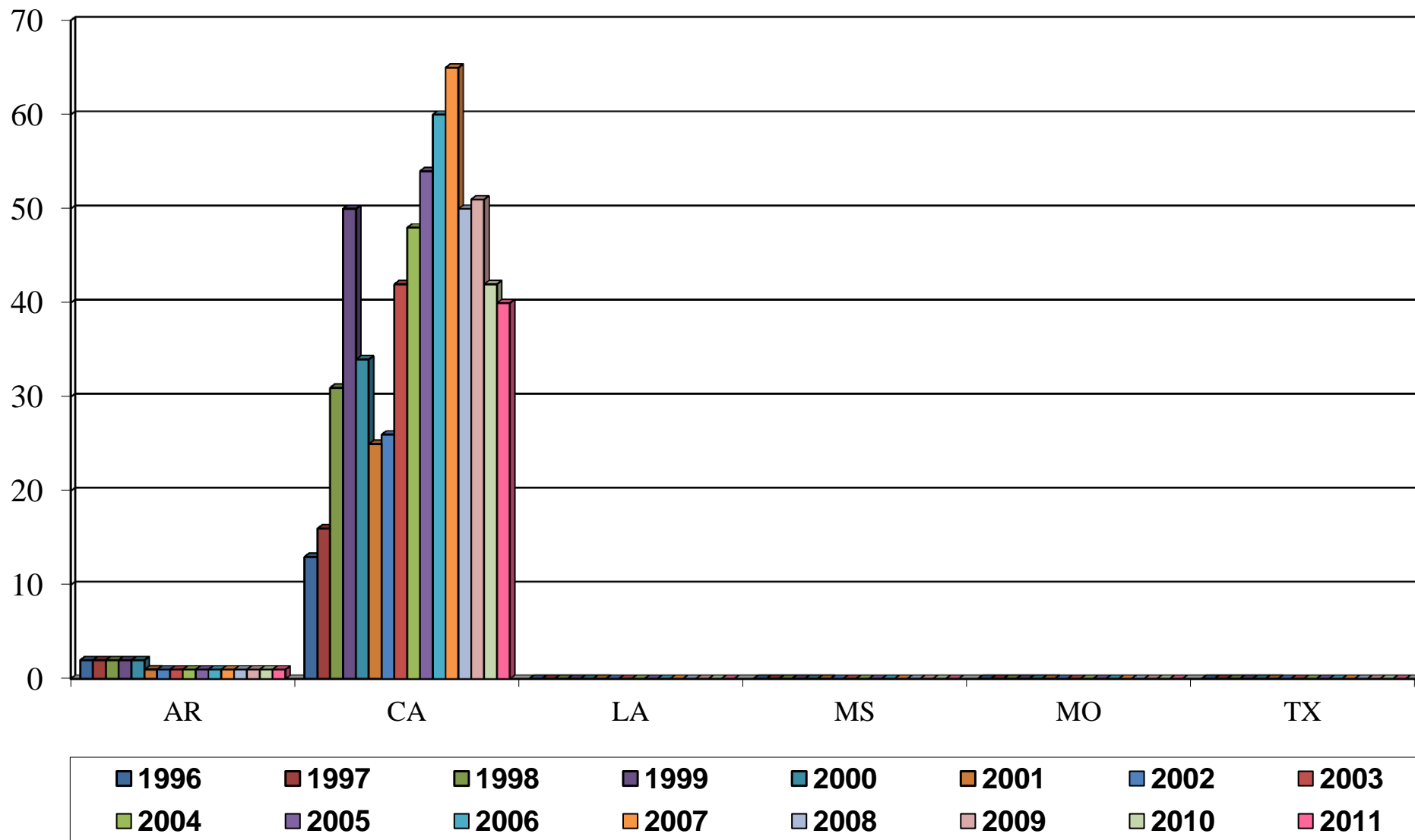
# U.S. Long Grain Rice Harvested By State 1996-2011, Thousand Acres



# U.S. Medium Grain Rice Harvested By State 1996-2011, Thousand Acres



# U.S. Short Grain Rice Harvested By State 1996-2011, Thousand Acres



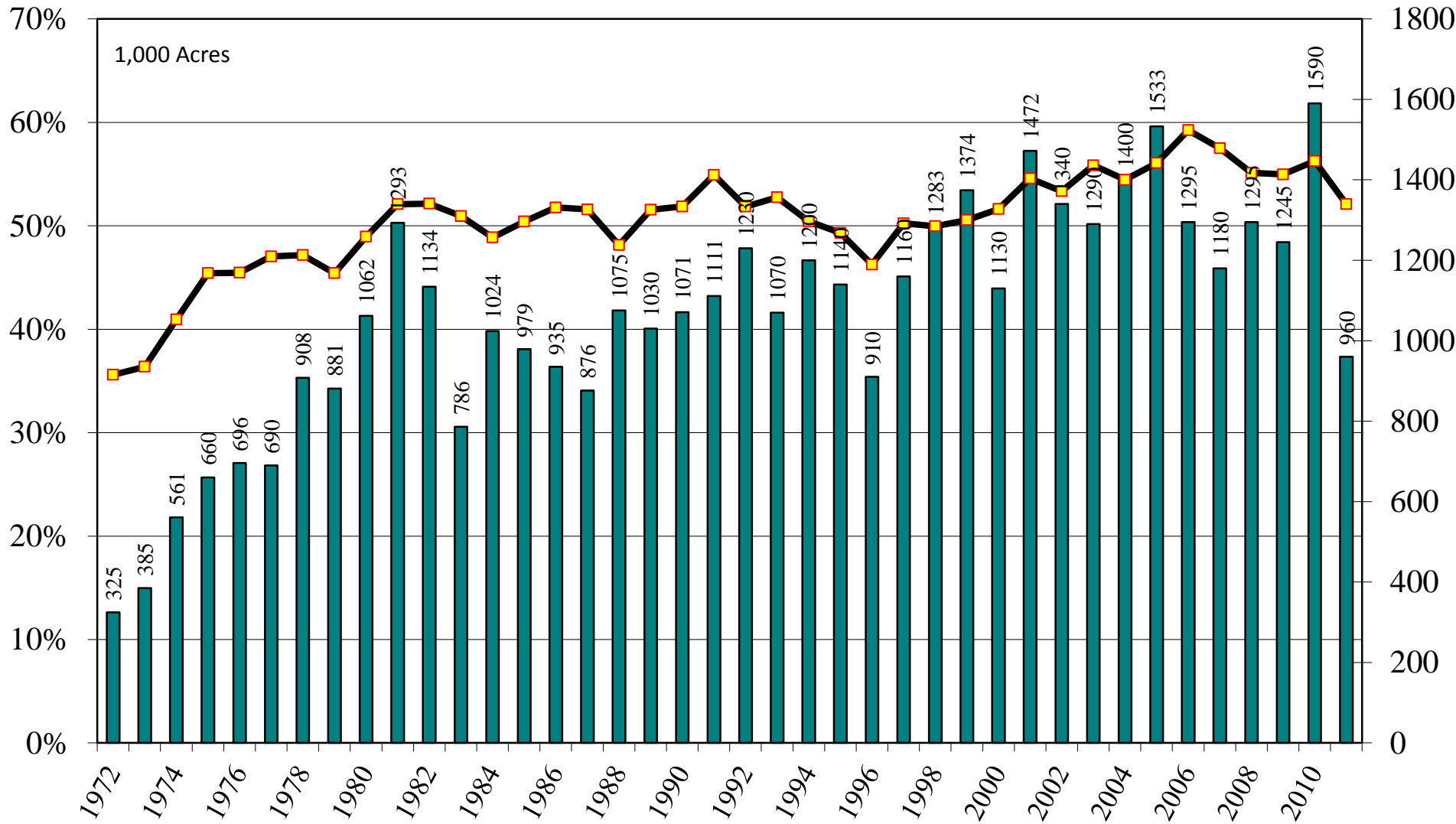
**June 30, 2011 USDA/NASS Acreage Report**

**Rice: Area Harvested by Class, State, and U.S. 1972-2011**

**USDA/NASS June 30, 2011 Acreage Report**

**Rice: Long Grain Harvested Acres 1972-2011**

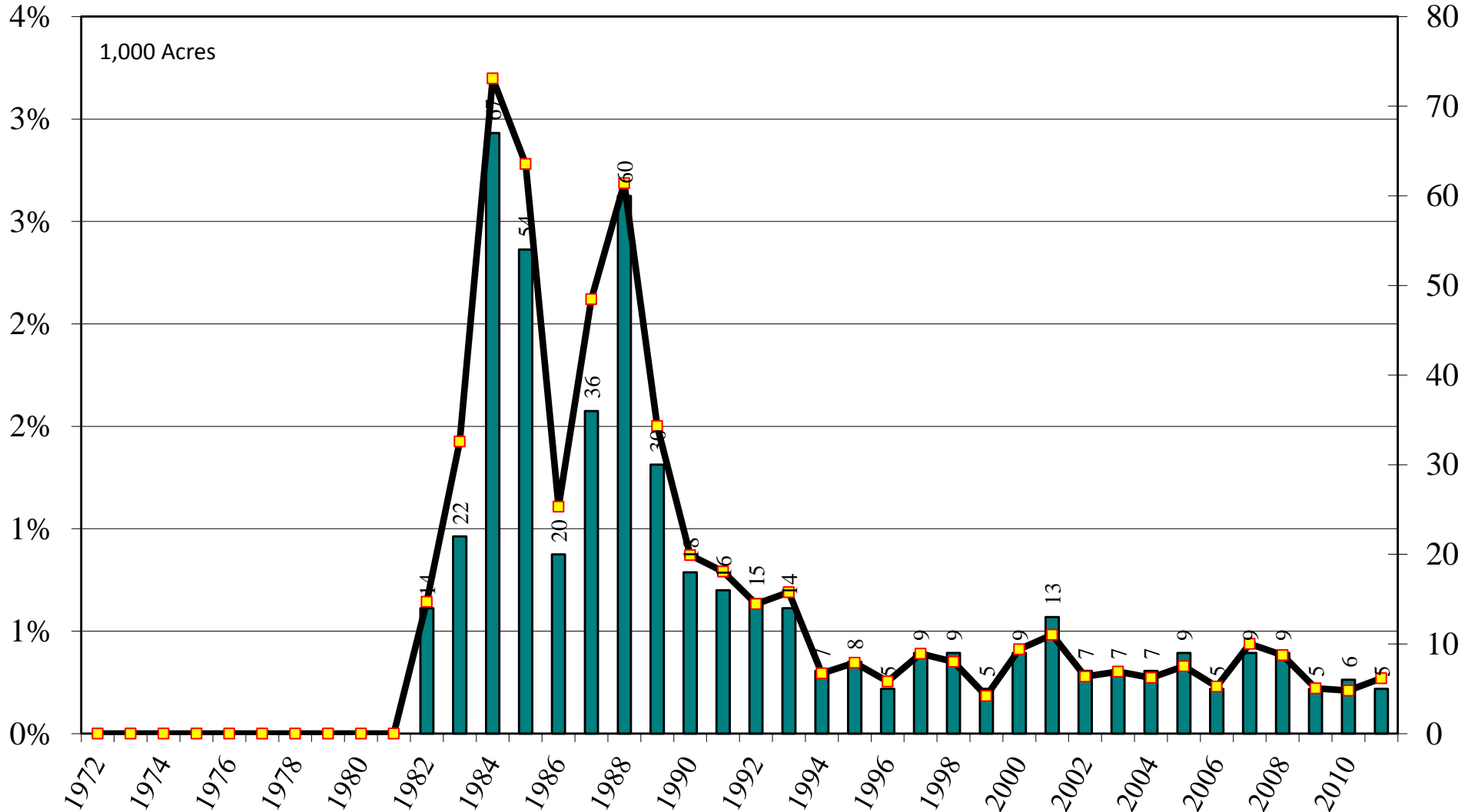
# Arkansas Long Grain Rice Harvested Acres and Percent of U.S. Long Grain Harvested Acres, 1972-2011



Source: [NASS/USDA Data Set](#) and [Crop Production--Acreage--Supplement](#)

**June 30, 2011**

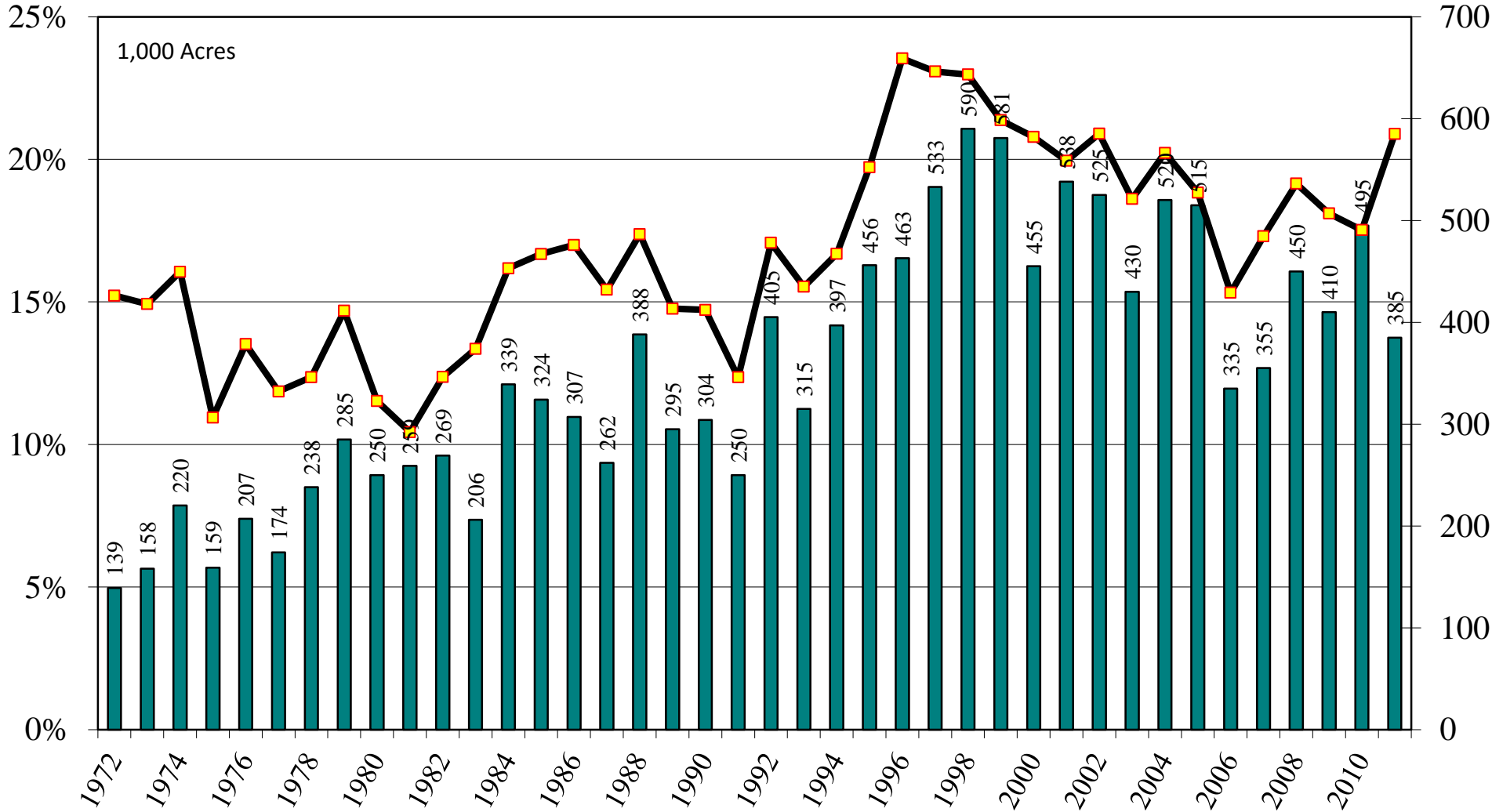
# California Long Grain Rice Harvested Acres and Percent of U.S. Long Grain Harvested Acres, 1972-2011



Source: [NASS/USDA Data Set](#) and [Crop Production--Acreage--Supplement](#)

**June 30, 2011**

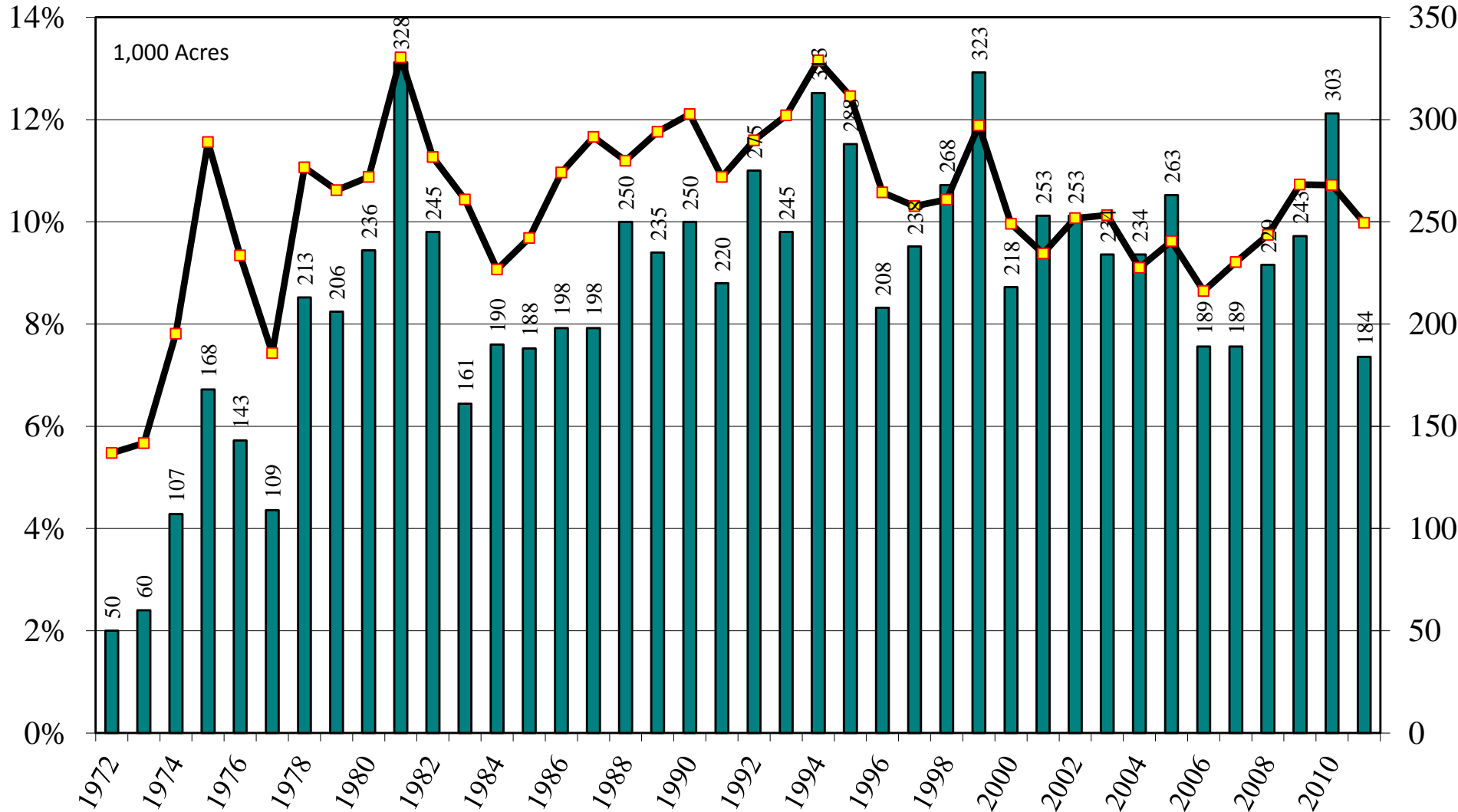
# Louisiana Long Grain Rice Harvested Acres and Percent of U.S. Long Grain Harvested Acres, 1972-2011



Source: [NASS/USDA Data Set](#) and [Crop Production--Acreage--Supplement](#)

**June 30, 2011**

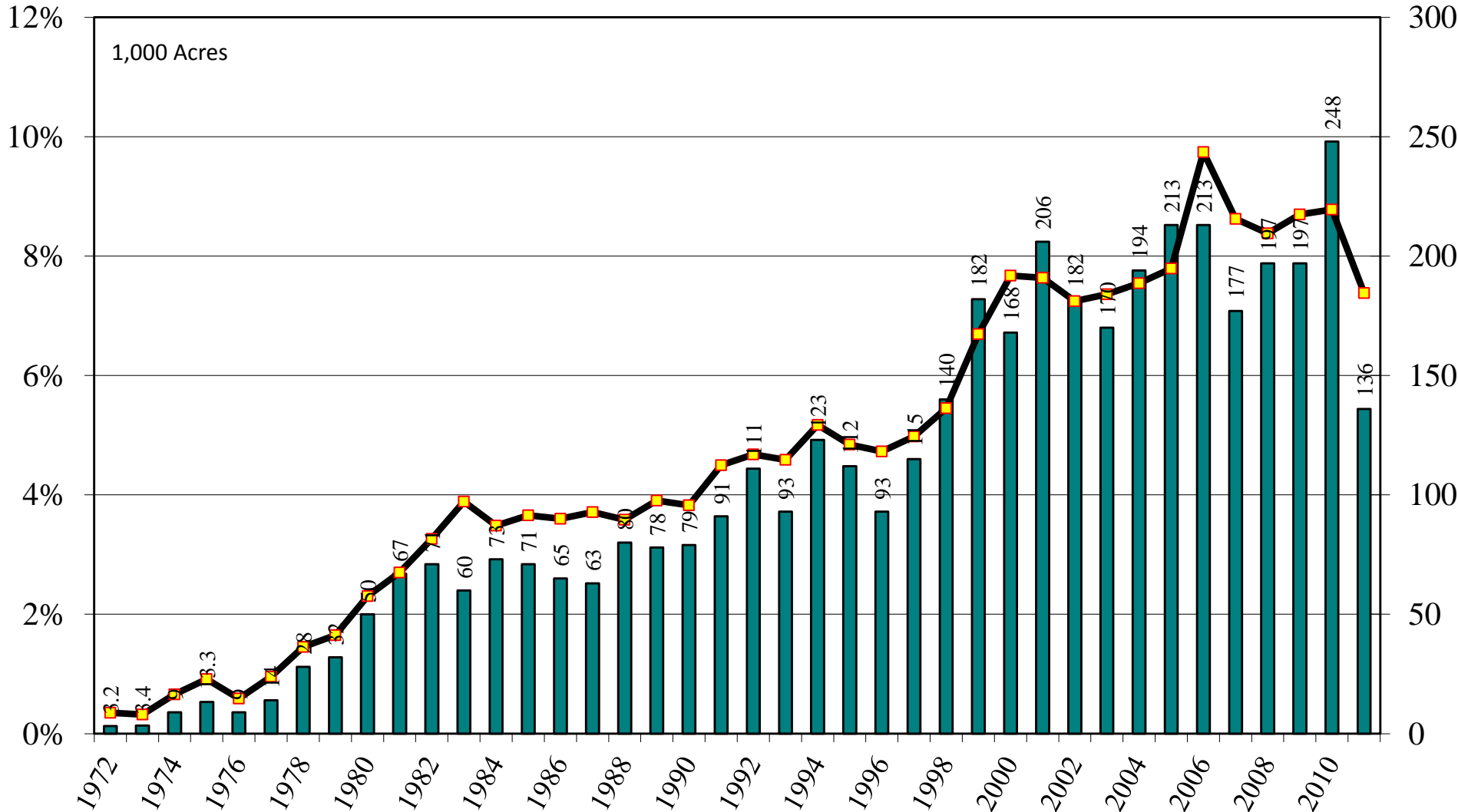
# Mississippi Long Grain Rice Harvested Acres and Percent of U.S. Long Grain Harvested Acres, 1972-2011



Source: [NASS/USDA Data Set](#) and [Crop Production--Acreage--Supplement](#)

June 30, 2011

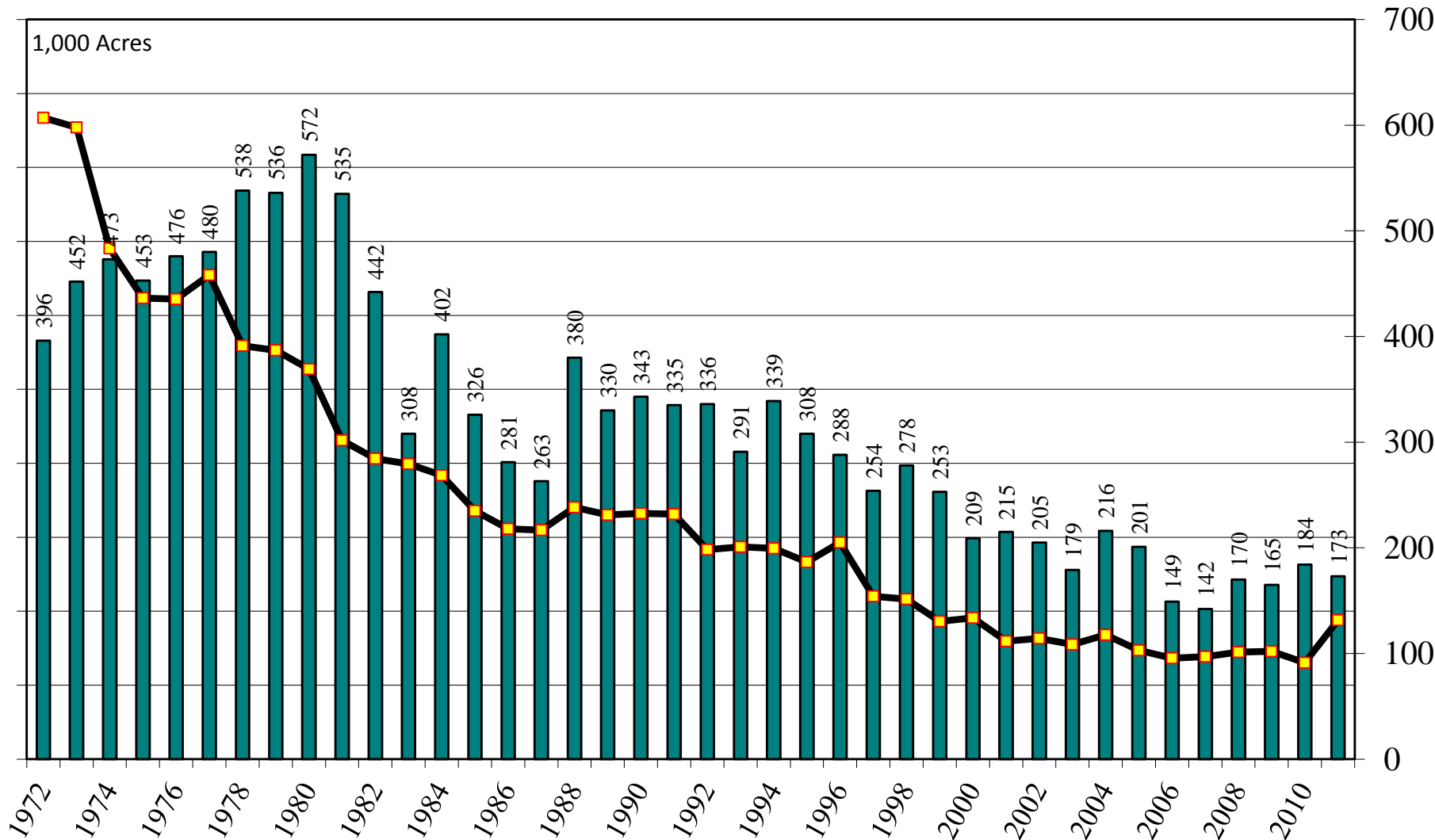
# Missouri Long Grain Rice Harvested Acres and Percent of U.S. Long Grain Harvested Acres, 1972-2011



Source: [NASS/USDA Data Set](#) and [Crop Production--Acreage--Supplement](#)

June 30, 2011

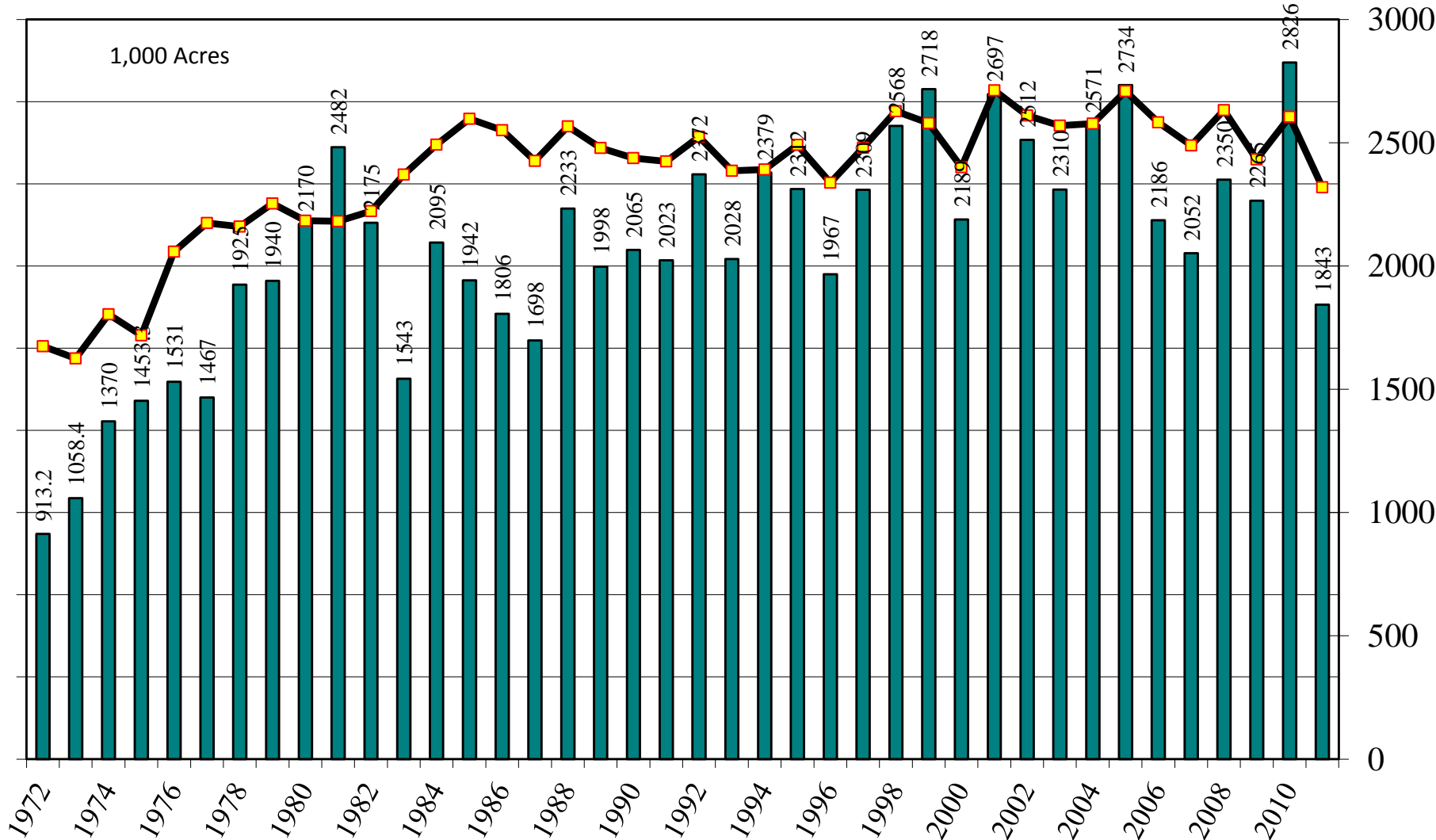
# Texas Long Grain Rice Harvested Acres and Percent of U.S. Long Grain Harvested Acres, 1972-2011



Source: [NASS/USDA Data Set](#) and [Crop Production--Acreage--Supplement](#)

**June 30, 2011**

# U.S. Long Grain Rice Harvested Acres and Percent of U.S. All Rice Harvested Acres, 1972-2011



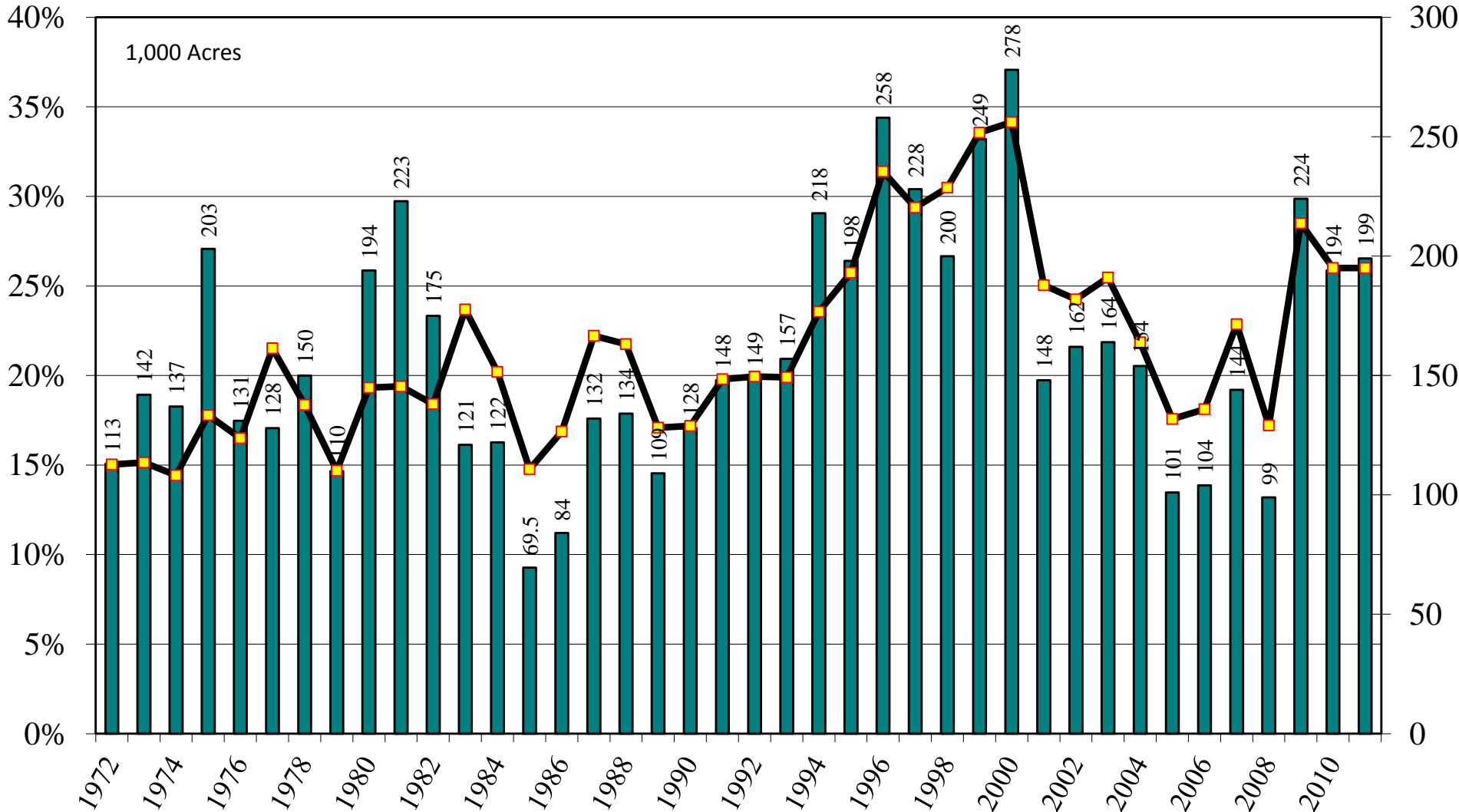
Source: [NASS/USDA Data Set](#) and [Crop Production--Acreage--Supplement](#)

**June 30, 2011**

# **USDA/NASS June 30, 2011 Acreage Report**

**Rice: Medium Grain Harvested Acres 1972-2011**

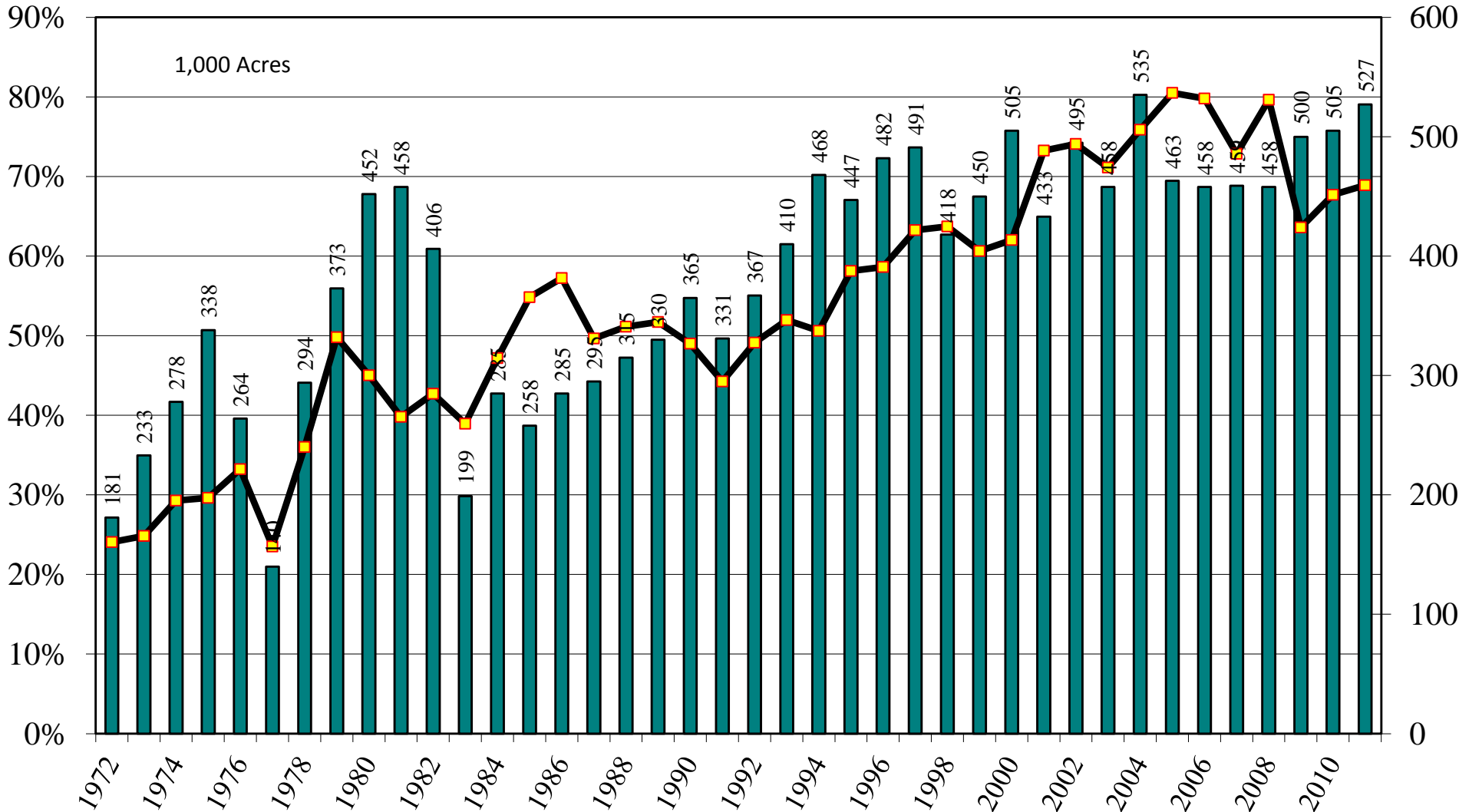
# Arkansas Medium Grain Rice Harvested Acres and Percent of U.S. Medium Grain Harvested Acres, 1972-2011



Source: [NASS/USDA Data Set](#) and [Crop Production--Acreage--Supplement](#)

**June 30, 2011**

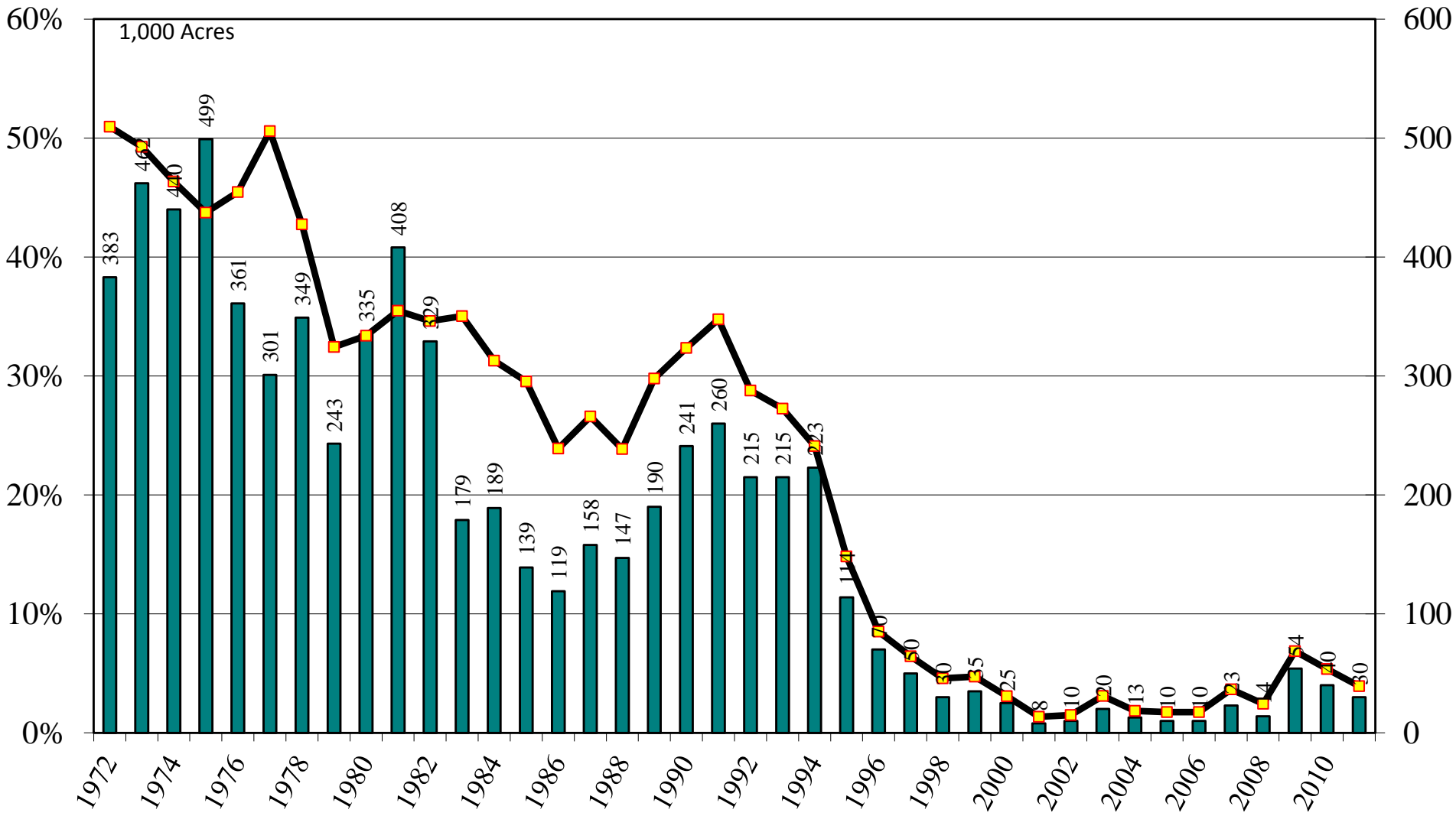
# California Medium Grain Rice Harvested Acres and Percent of U.S. Medium Grain Harvested Acres, 1972-2011



Source: [NASS/USDA Data Set](#) and [Crop Production--Acreage--Supplement](#)

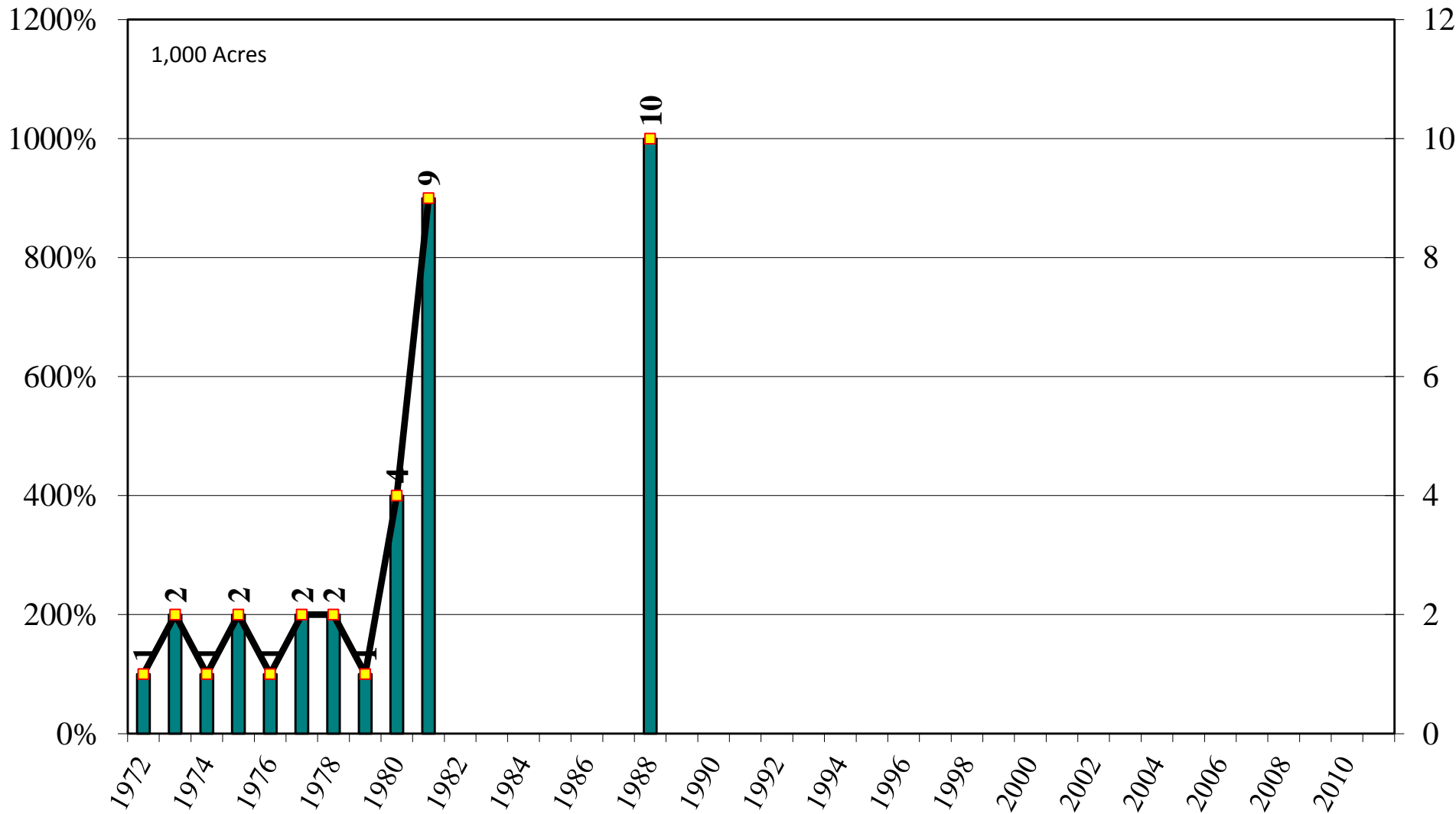
June 30, 2011

# Louisiana Medium Grain Rice Harvested Acres and Percent of U.S. Medium Grain Harvested Acres, 1972-2011



Source: [NASS/USDA Data Set](#) and [Crop Production--Acreage--Supplement](#)

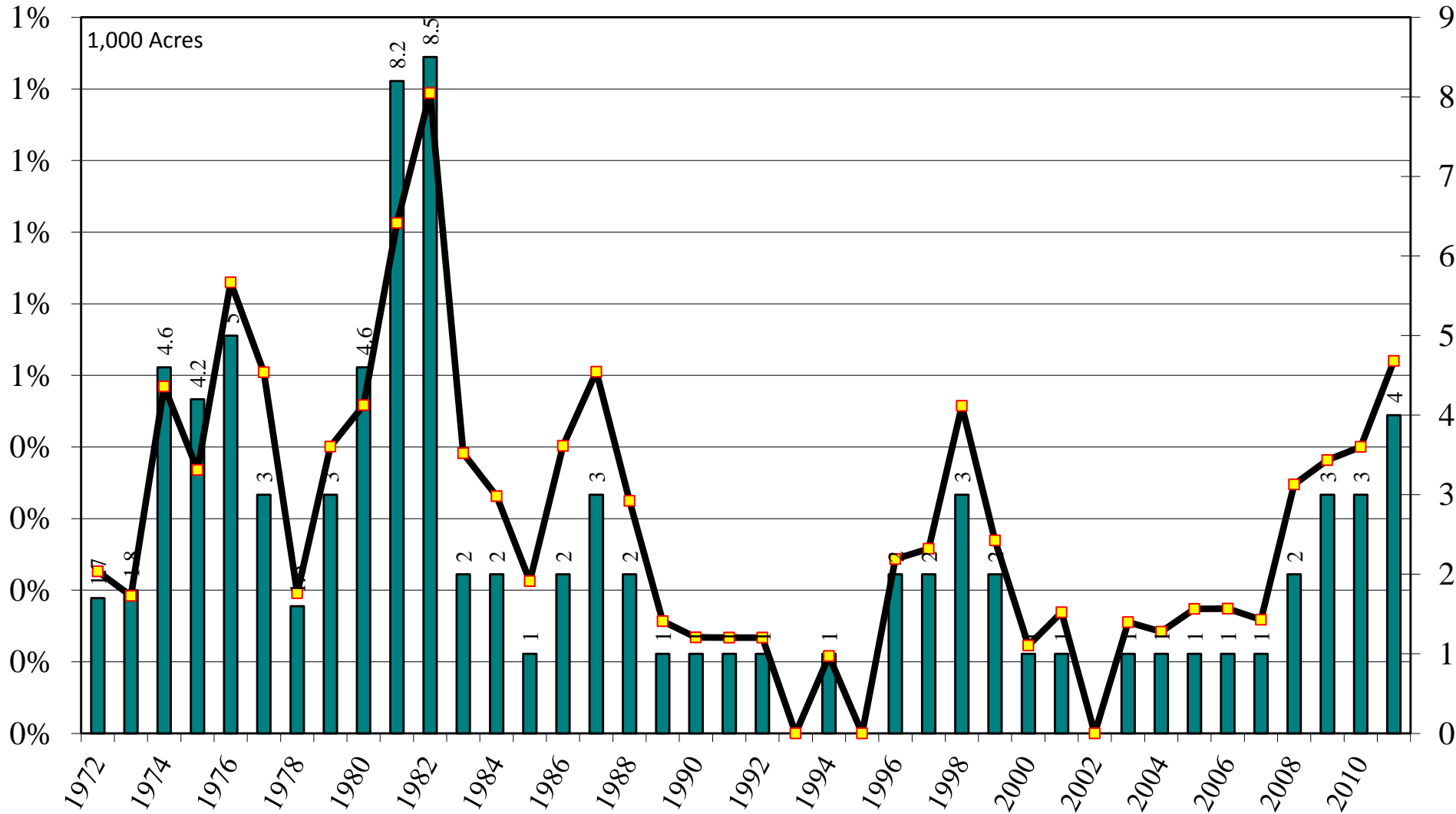
# Mississippi Medium Grain Rice Harvested Acres and Percent of U.S. Medium Grain Harvested Acres, 1972-2011



Source: [NASS/USDA Data Set](#) and [Crop Production--Acreage--Supplement](#)

**June 30, 2011**

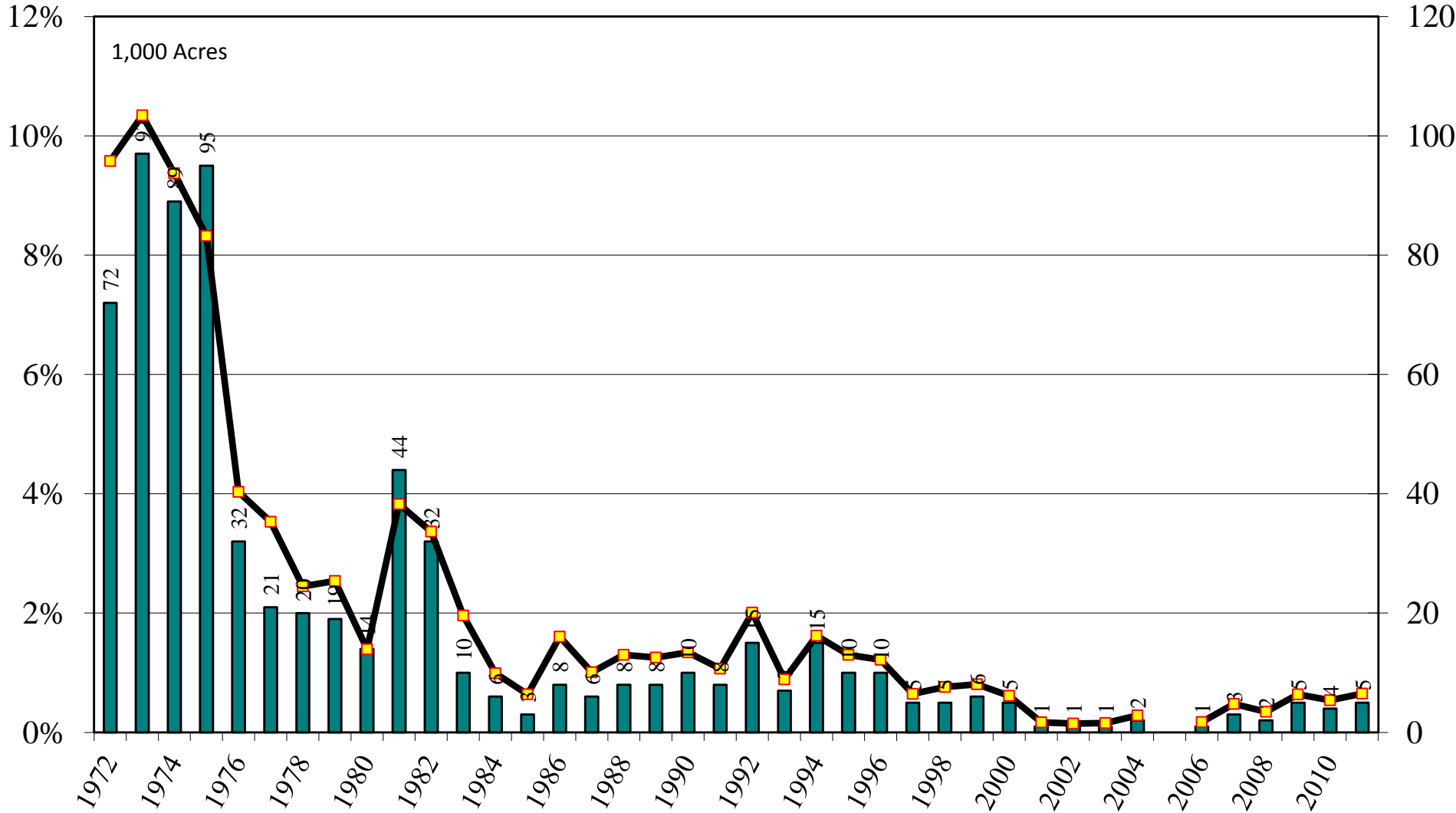
# Missouri Medium Grain Rice Harvested Acres and Percent of U.S. Medium Grain Harvested Acres, 1972-2011



Source: [NASS/USDA Data Set](#) and [Crop Production--Acreage--Supplement](#)

June 30, 2011

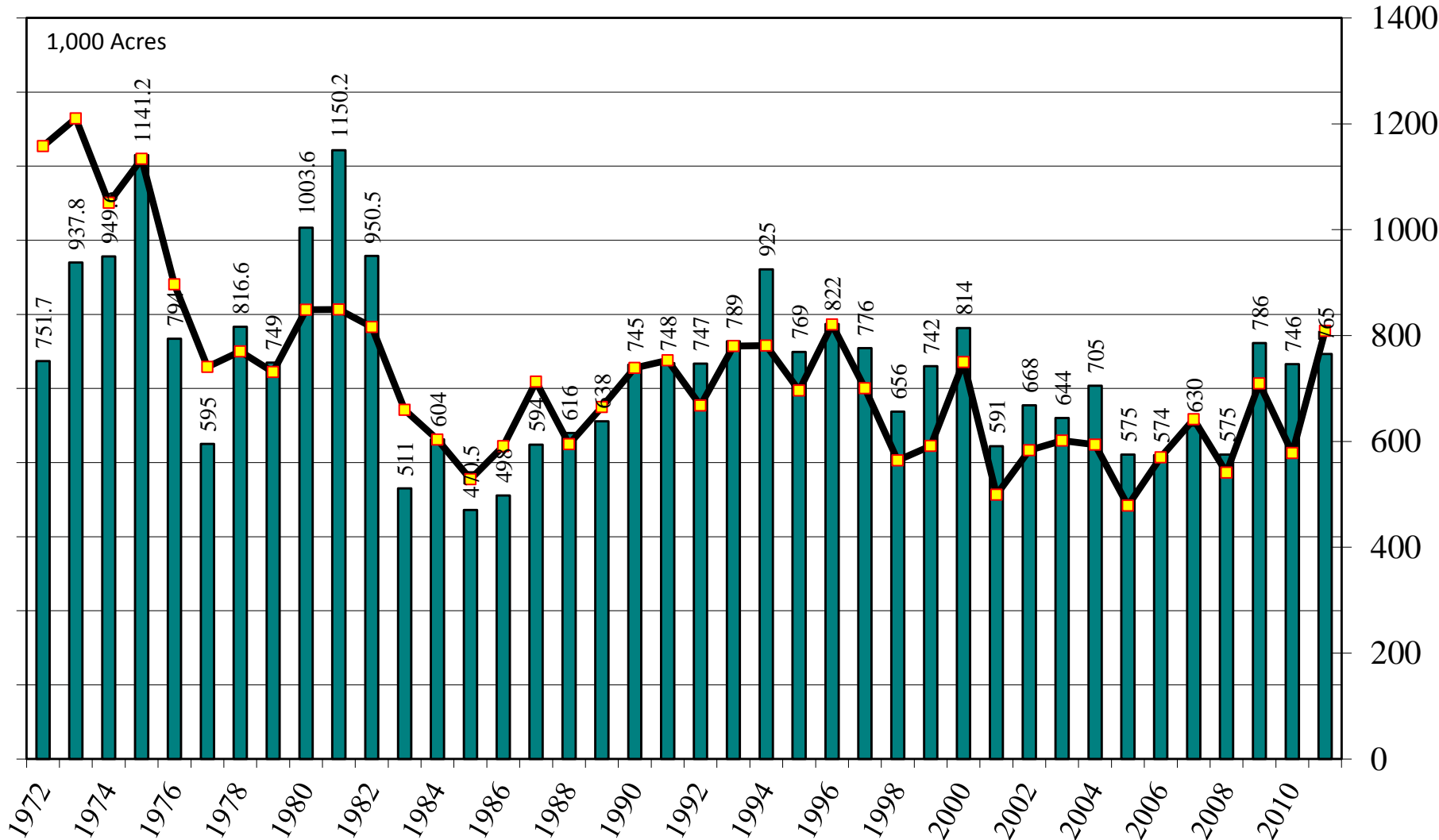
# Texas Medium Grain Rice Harvested Acres and Percent of U.S. Medium Grain Harvested Acres, 1972-2011



Source: [NASS/USDA Data Set](#) and [Crop Production--Acreage--Supplement](#)

**June 30, 2011**

# U.S. Medium Grain Rice Harvested Acres and Percent of U.S. All Rice Harvested Acres, 1972-2011



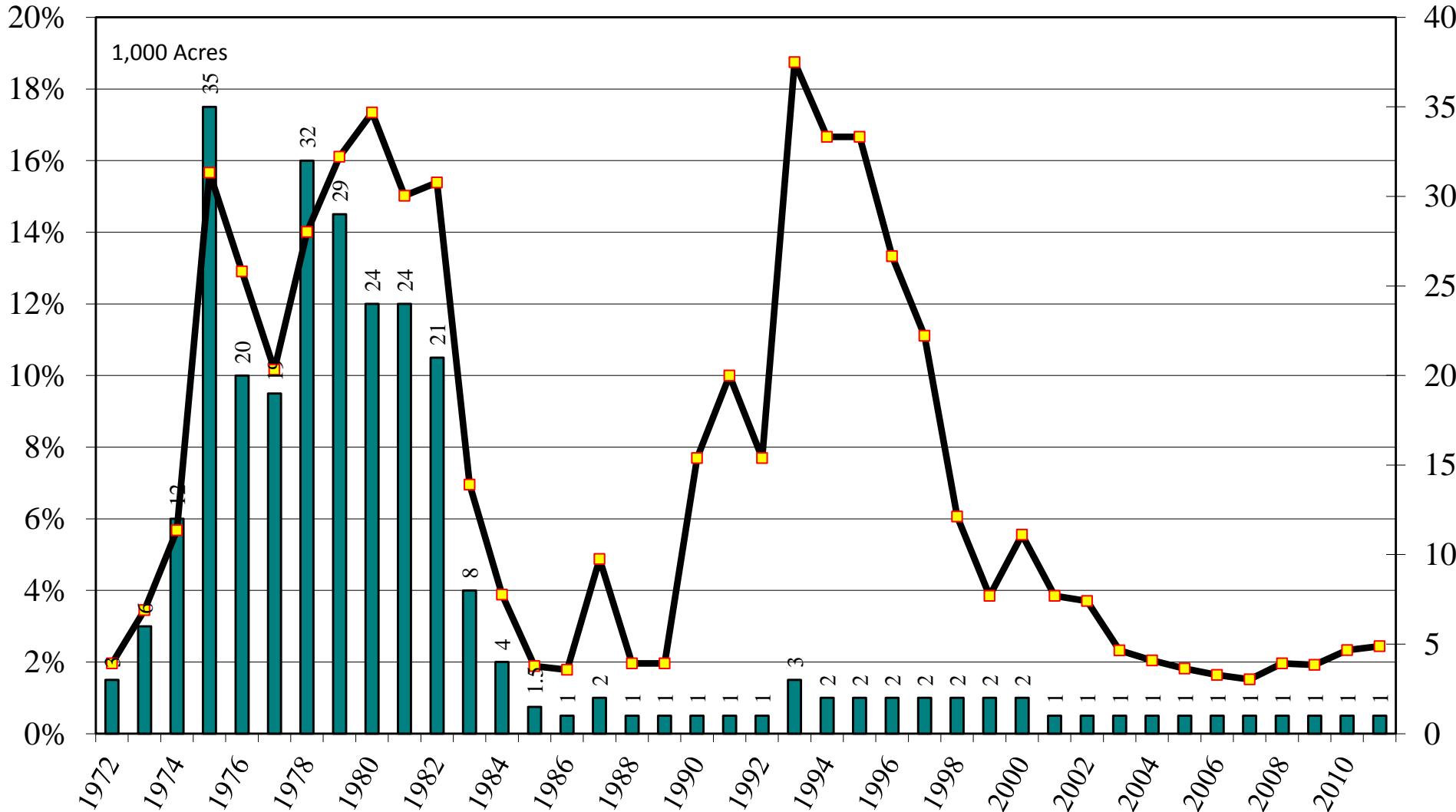
Source: [NASS/USDA Data Set](#) and [Crop Production--Acreage--Supplement](#)

June 30, 2011

**USDA/NASS June 30, 2011 Acreage Report**

**Rice: Short Grain Harvested Acres 1972-2011**

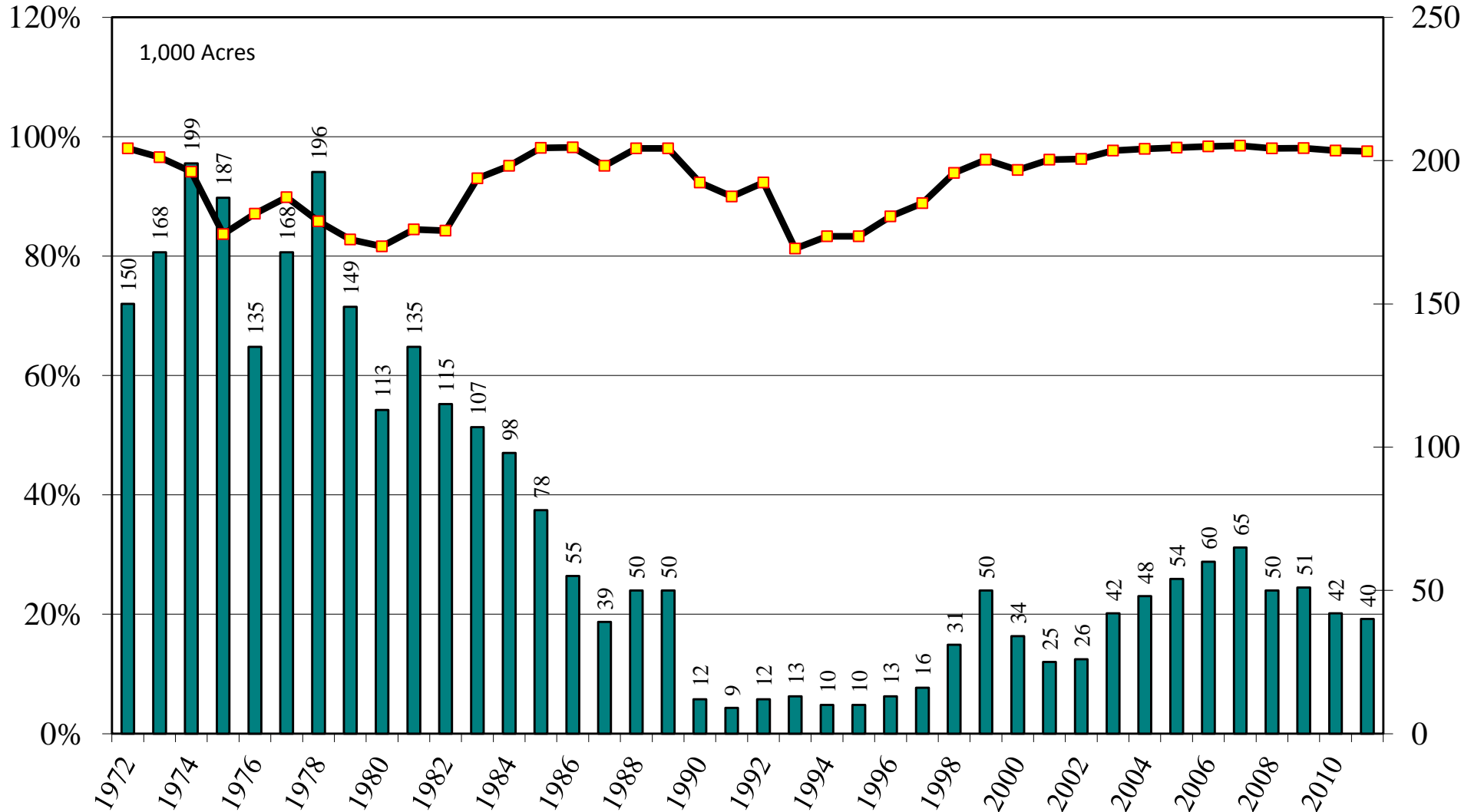
# Arkansas Short Grain Rice Harvested Acres and Percent of U.S. Short Grain Harvested Acres, 1972-2011



Source: [NASS/USDA Data Set](#) and [Crop Production--Acreage--Supplement](#)

**June 30, 2011**

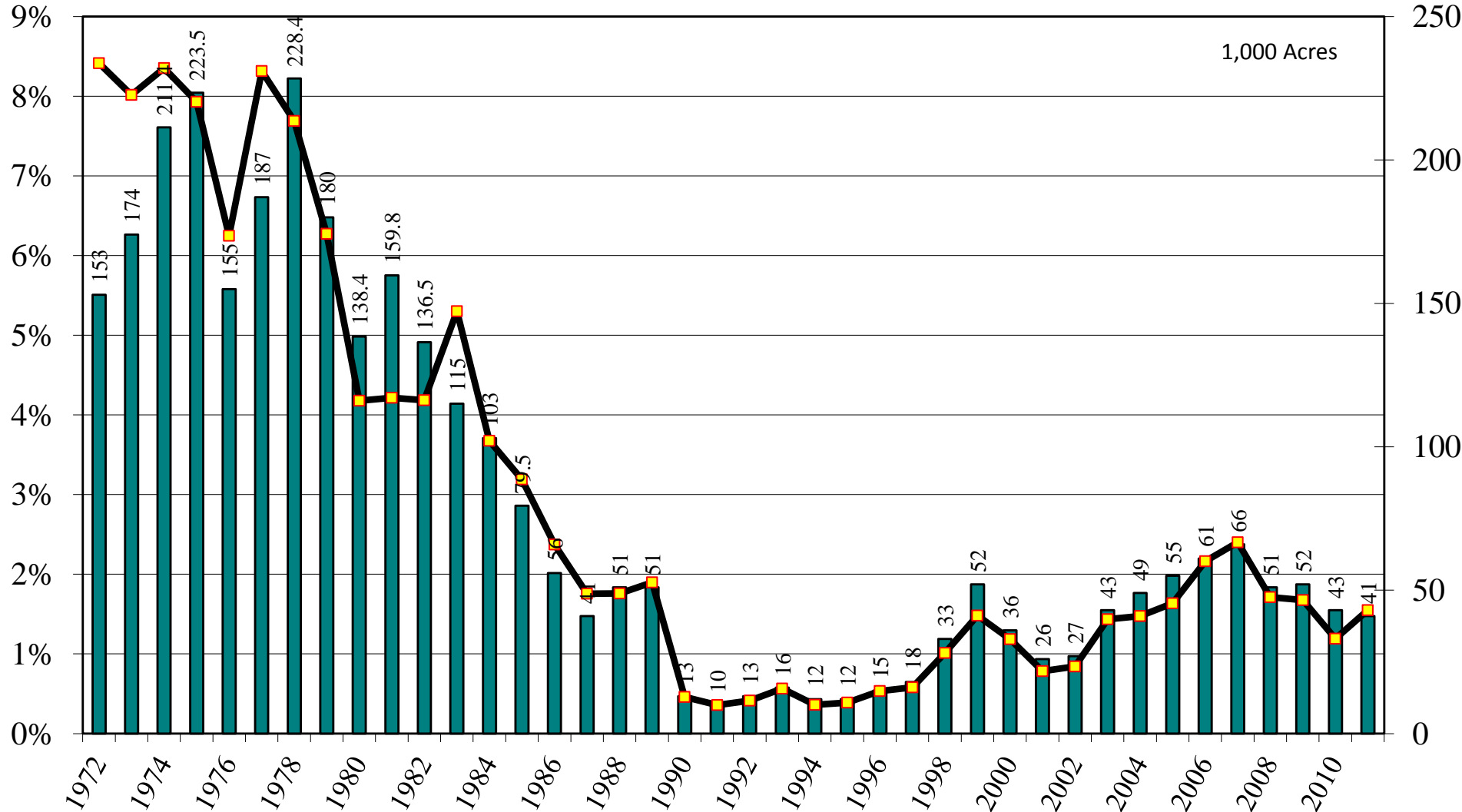
# California Short Grain Rice Harvested Acres and Percent of U.S. Short Grain Harvested Acres, 1972-2011



Source: [NASS/USDA Data Set](#) and [Crop Production--Acreage--Supplement](#)

**June 30, 2011**

# U.S. Short Grain Rice Harvested Acres and Percent of U.S. All Rice Harvested Acres, 1972-2011



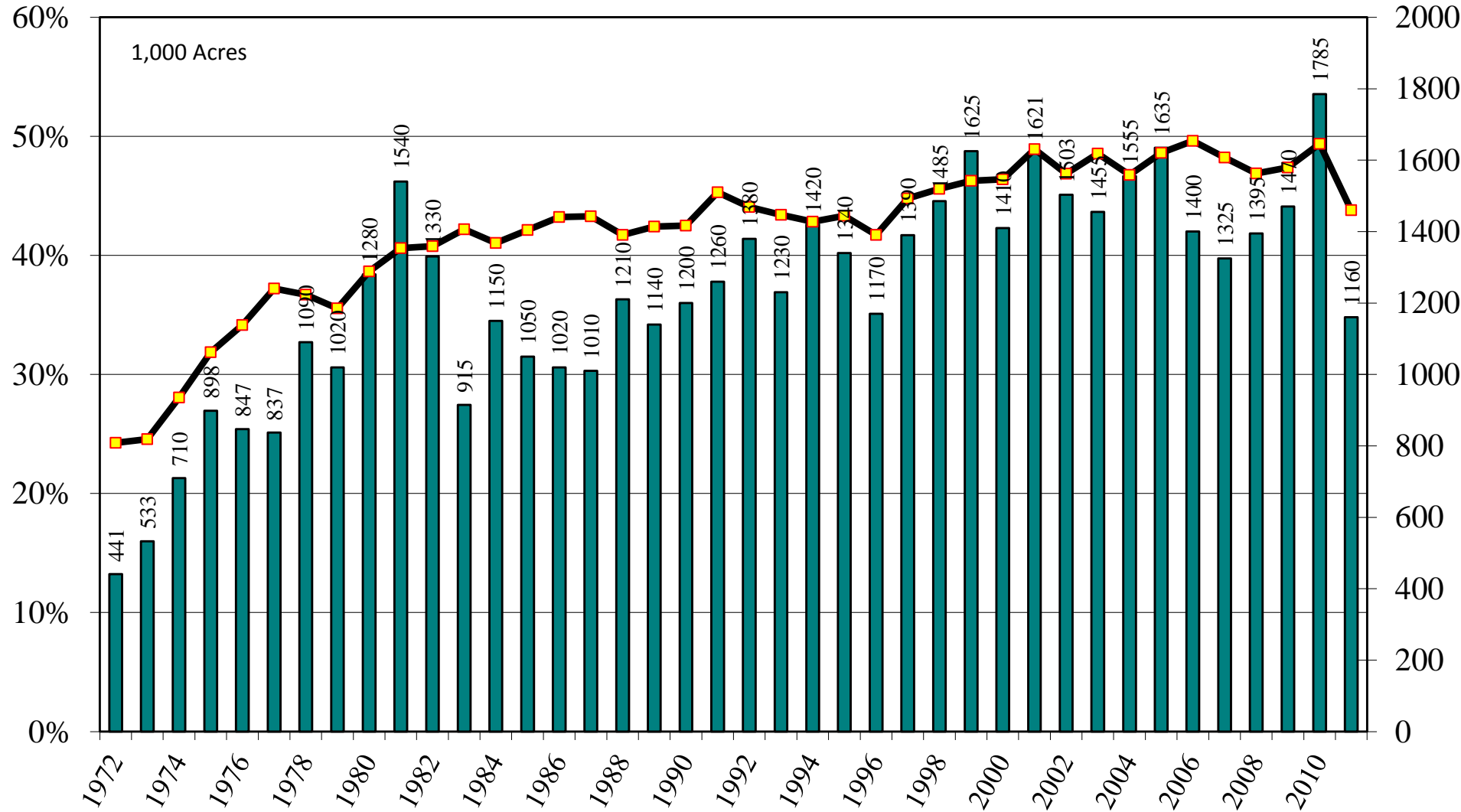
Source: [NASS/USDA Data Set](#) and [Crop Production--Acreage--Supplement](#)

**June 30, 2011**

# **USDA/NASS June 30, 2011 Acreage Report**

## **Rice: All Harvested Acres 1972-2011**

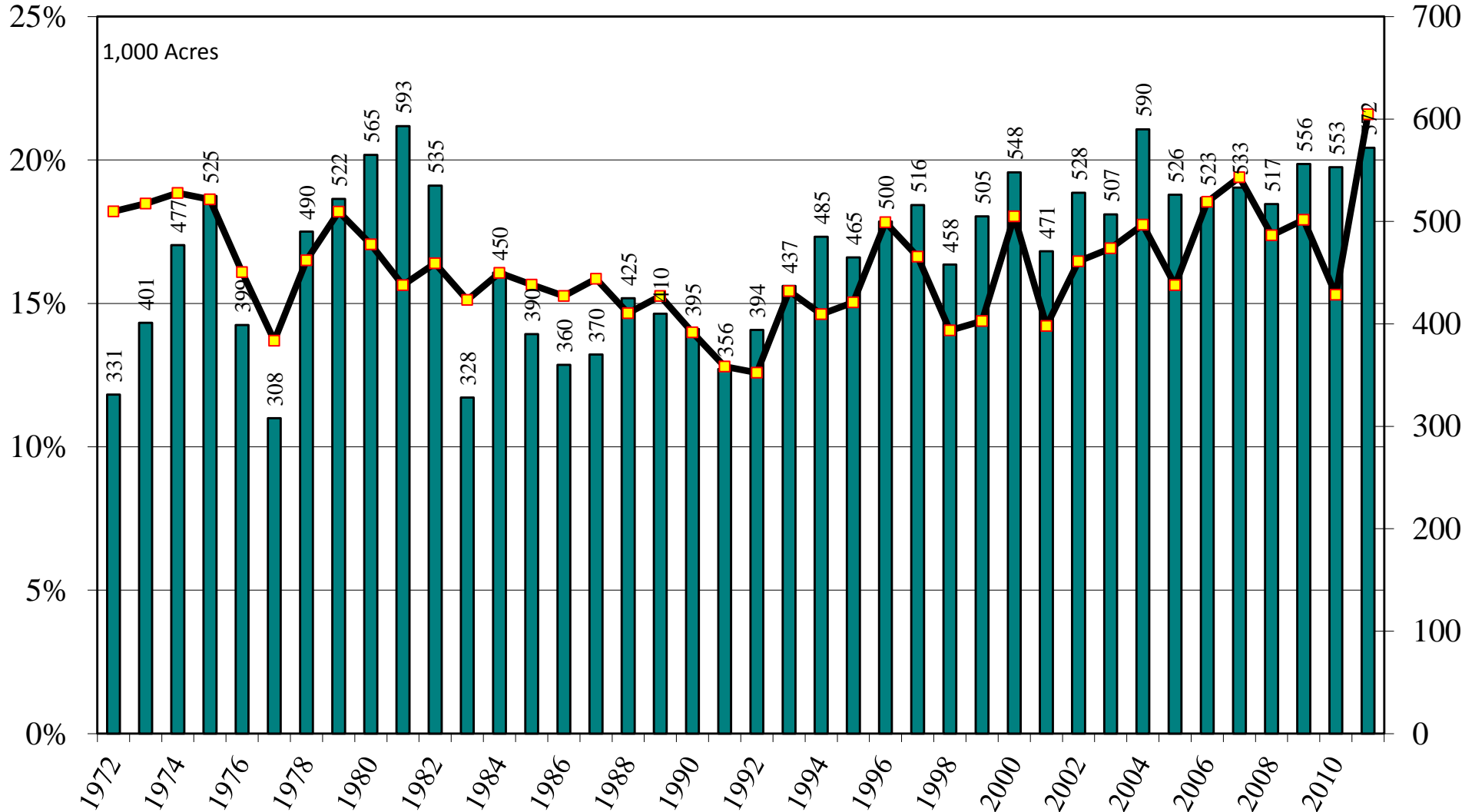
# Arkansas All Rice Harvested Acres and Percent of U.S. Harvested Acres, 1972-2011



Source: [NASS/USDA Data Set](#) and [Crop Production--Acreage--Supplement](#)

**June 30, 2011**

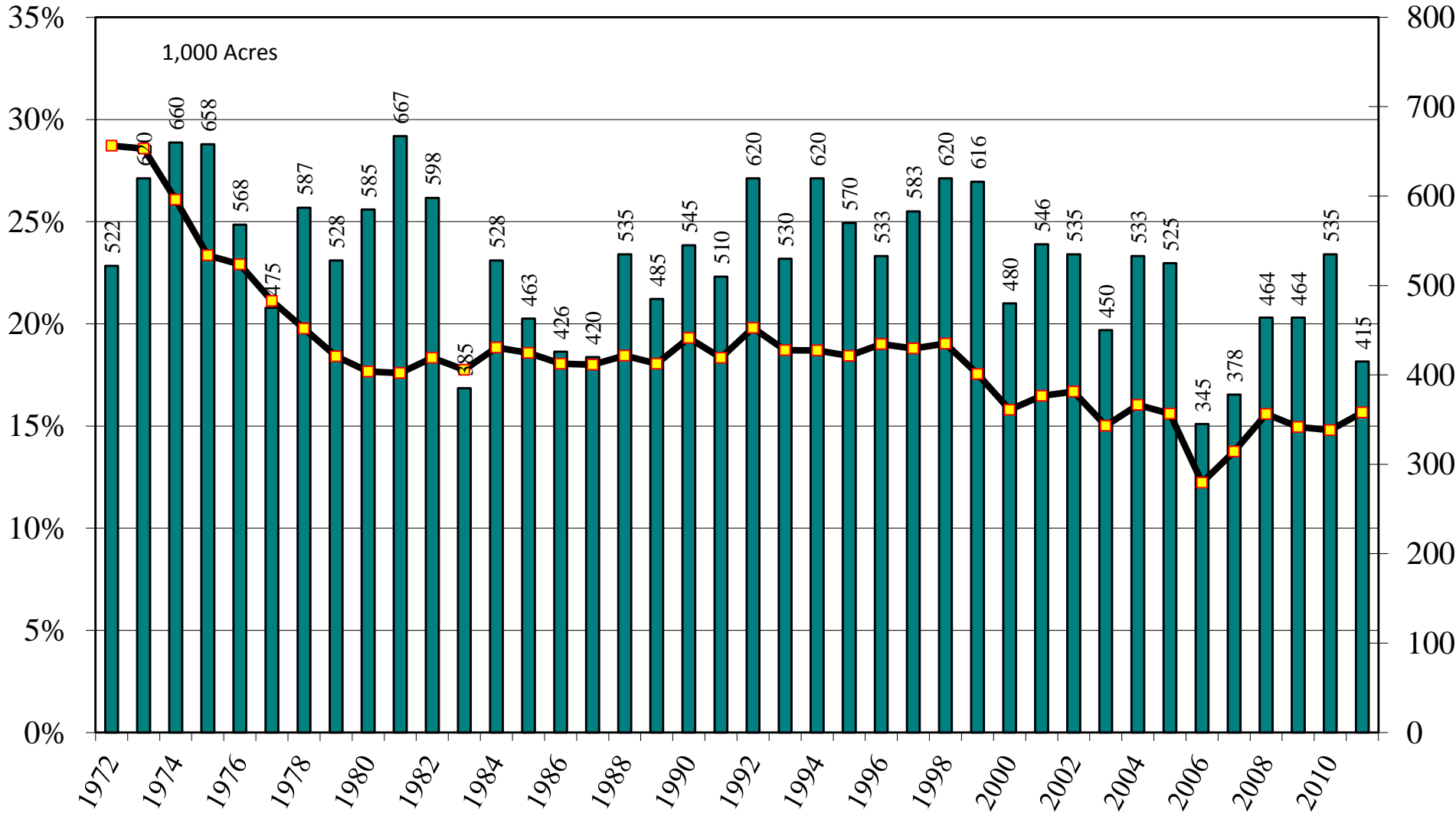
# California All Rice Harvested Acres and Percent of U.S. Harvested Acres, 1972-2011



Source: [NASS/USDA Data Set](#) and [Crop Production--Acreage--Supplement](#)

June 30, 2011

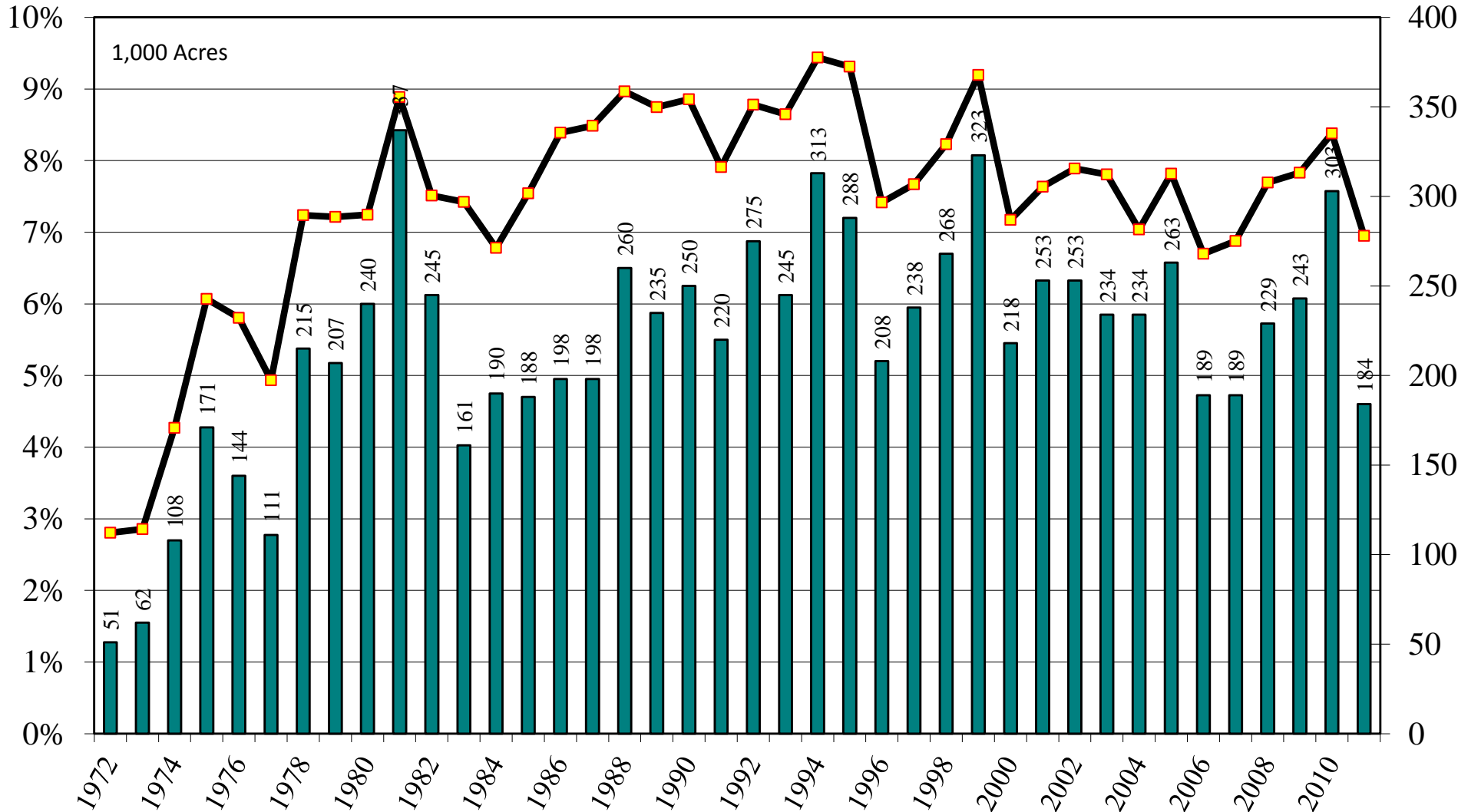
# Louisiana All Rice Harvested Acres and Percent of U.S. Harvested Acres, 1972-2011



Source: [NASS/USDA Data Set](#) and [Crop Production--Acreage--Supplement](#)

**June 30, 2011**

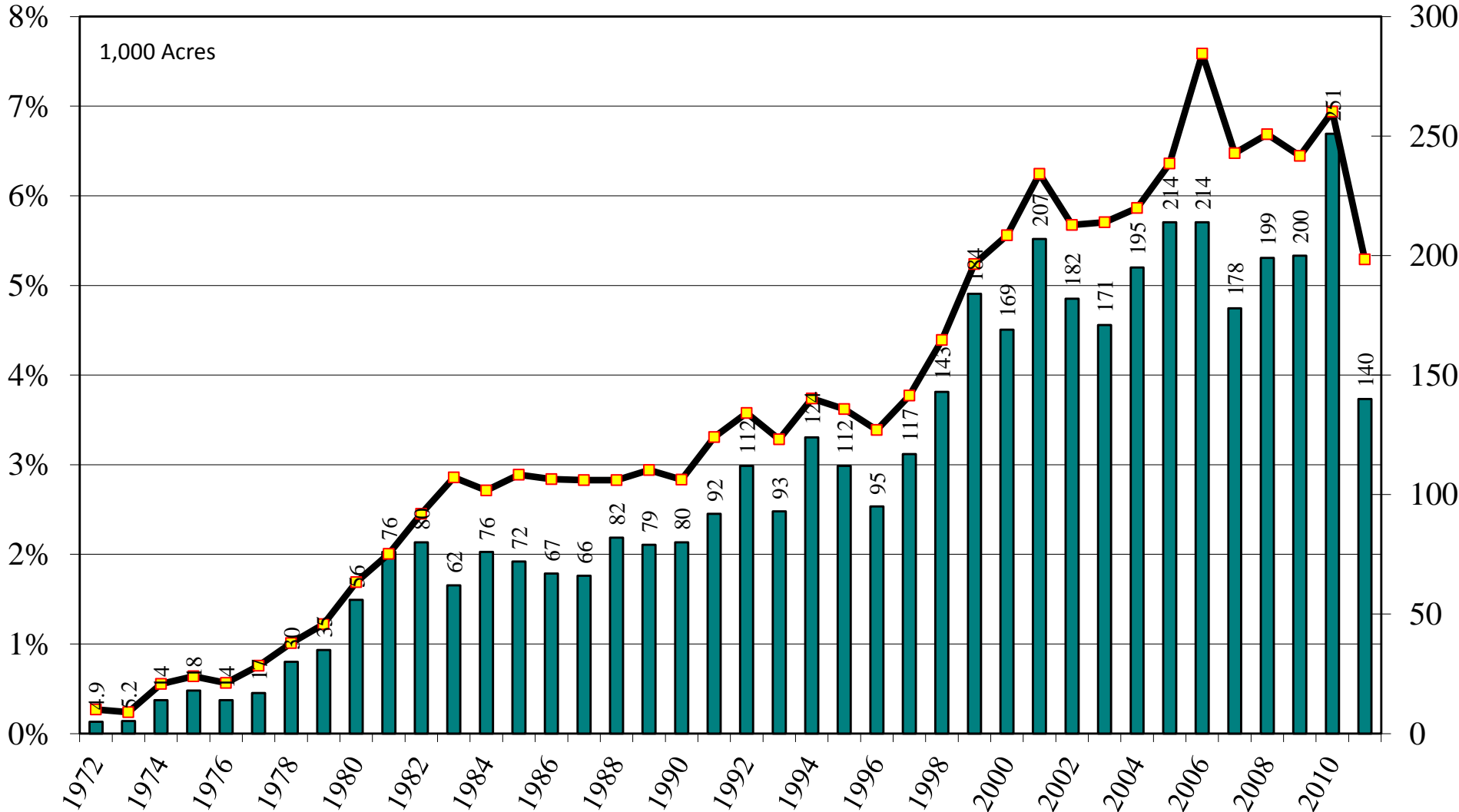
# Mississippi All Rice Harvested Acres and Percent of U.S. Harvested Acres, 1972-2011



Source: [NASS/USDA Data Set](#) and [Crop Production--Acreage--Supplement](#)

June 30, 2011

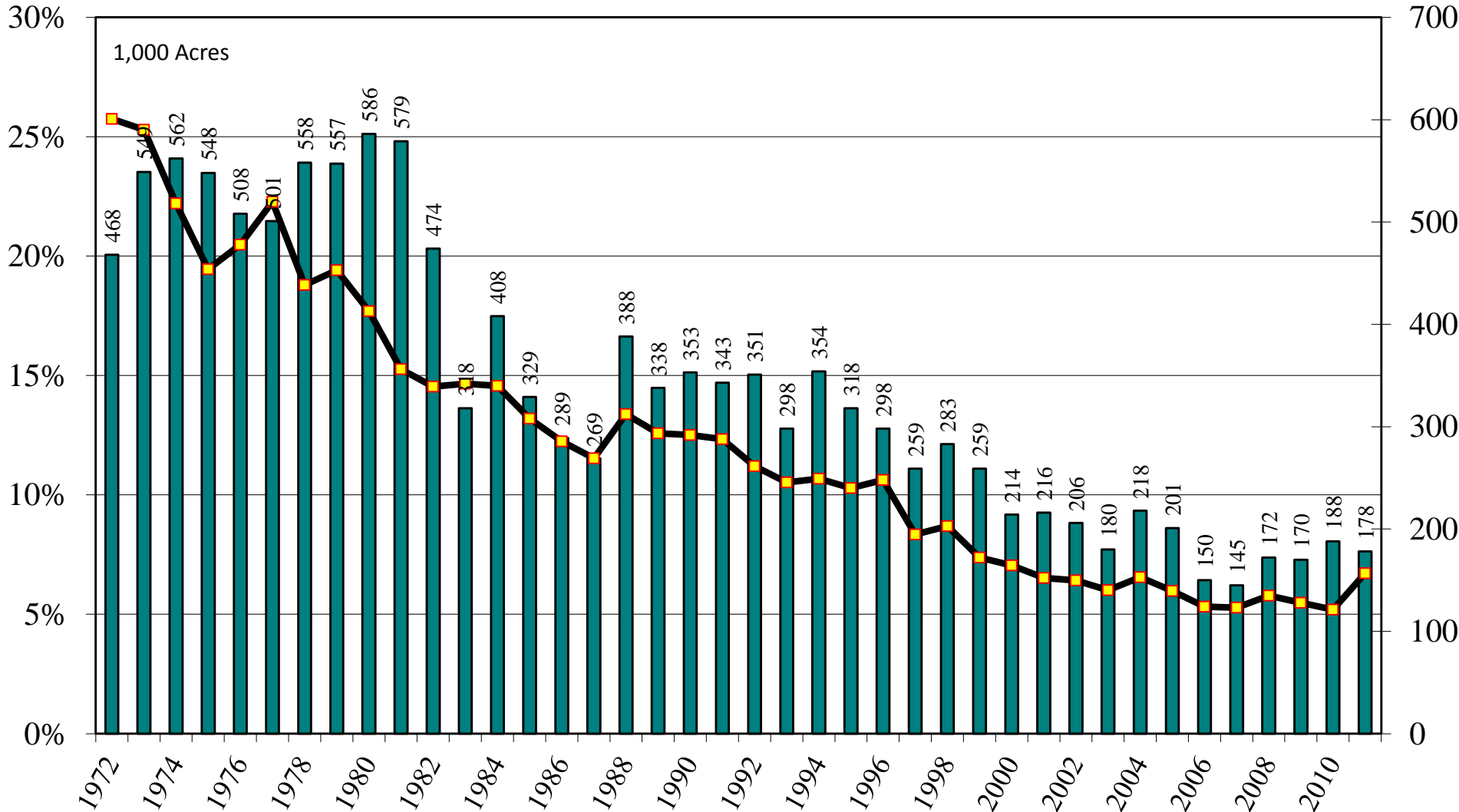
# Missouri All Rice Harvested Acres and Percent of U.S. Harvested Acres, 1972-2011



Source: [NASS/USDA Data Set](#) and [Crop Production--Acreage--Supplement](#)

June 30, 2011

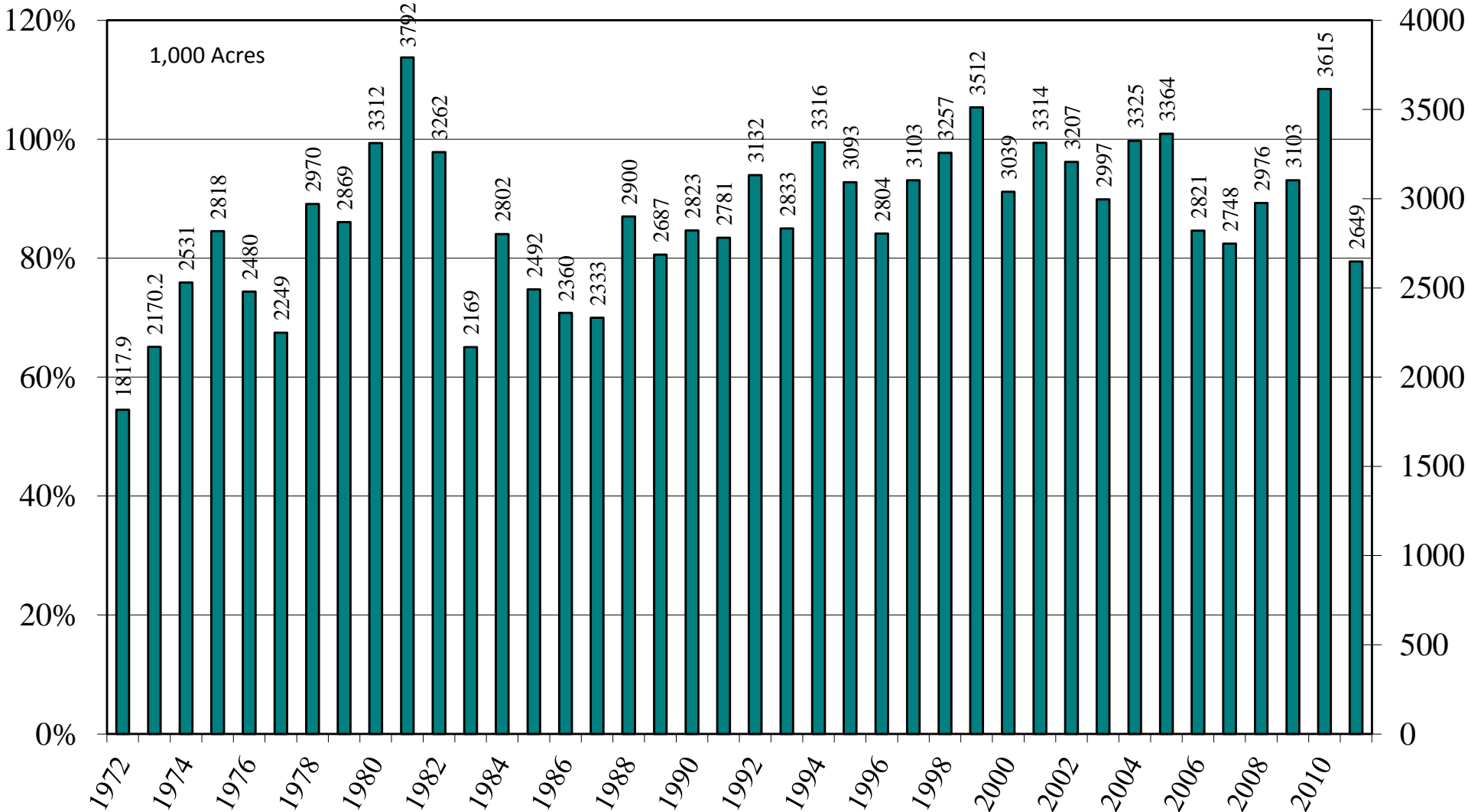
# Texas All Rice Harvested Acres and Percent of U.S. Harvested Acres, 1972-2011



Source: [NASS/USDA Data Set](#) and [Crop Production--Acreage--Supplement](#)

**June 30, 2011**

# U.S. All Rice Harvested Acres, 1972-2011



Source: [NASS/USDA Data Set](#) and [Crop Production--Acreage--Supplement](#)

**June 30, 2011**