

# Daily Grain and Soybean Charts

## Rice, Soybeans, Corn and Wheat Charts Included

*Bobby Coats - Extension Agricultural Policy Analyst*

*November 23, 2005*

<http://www.aragriculture.org/agfoodpolicy/ricesitol/default.asp>

### CBOT Rough Rice Futures (RR)

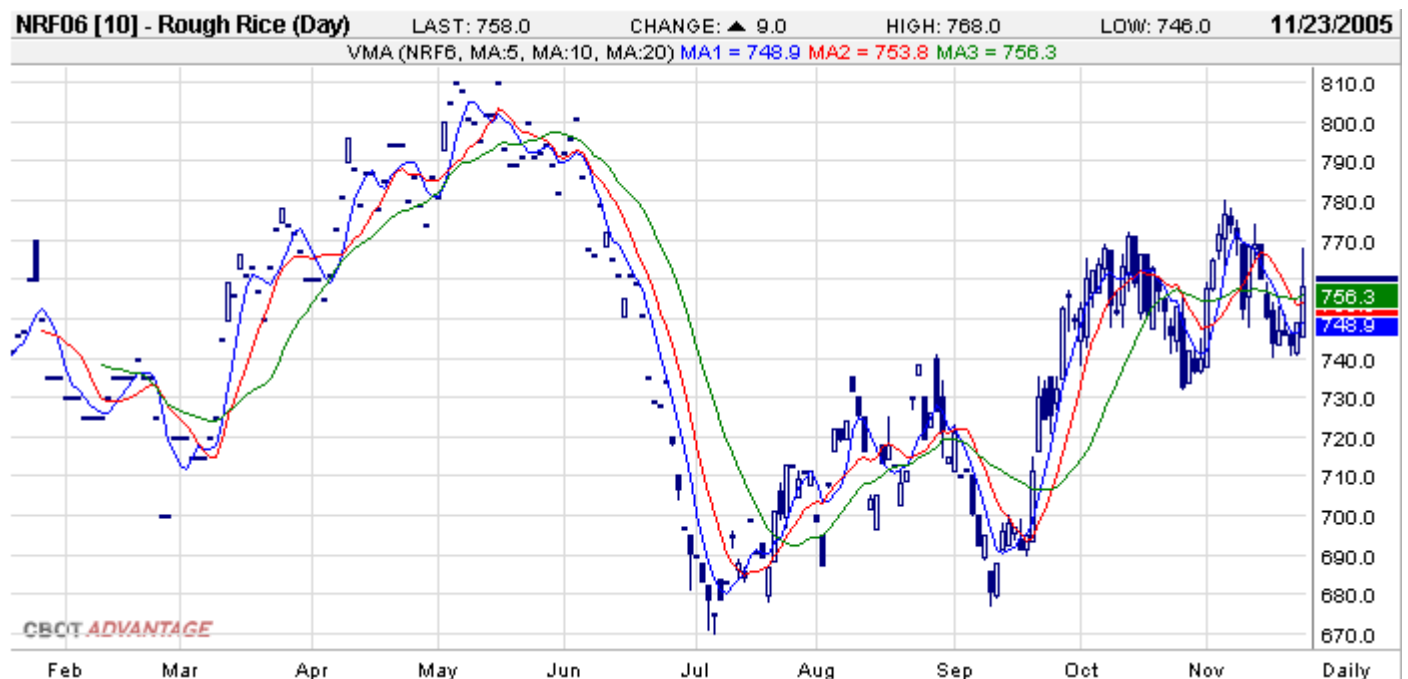
Open Auction

Exp	Last 1 Last 2	Net Chg	Open	High	Low	Close	Settle	Prev Settle	Hi/Lo Limit
06Jan ☒	758'0 12:04 757'0 12:04	+9'0	749'0 746'0 9:17	768'0 10:20	746'0 9:15	759'0 757'0 12:04	758'0	749'0	808'0 708'0
06Mar ☒	784'5 12:04 785'0 12:04	+10'5	772'0 9:16	792'0 10:20	772'0 9:15	784'0 785'0 12:04	784'5	774'0	834'5 734'5
06May ☒	805'0 12:04	+11'0	811'0 10:48	811'0 10:48	805'0 11:41	805'0 12:04	805'0	794'0	855'0 755'0
06Jul ☒	825'0 12:04	+11'0	824'0 9:54	828'0 10:41	824'0 9:54	825'0 12:04	825'0	814'0	875'0 775'0
06Sep ☒	837'0 12:04	+7'0				837'0 12:04	837'0	830'0	887'0 787'0
06Nov ☒	835'0 12:04	Unch	835'0 9:46	835'0 9:46	835'0 9:46	835'0 12:04	835'0	835'0	885'0 785'0
07Jan ☒	855'0 12:04	Unch	855'0 10:42	855'0 10:42	855'0 10:42	855'0 12:04	855'0	855'0	905'0 805'0

Table generated November 23, 2005 15:10 CST

= Chart ☒ = Option

### Rice Chart 1. CBOT Rough Rice Futures Chart, January 2005, Variable Moving Average (5, 10, 20)



Source: Chicago Board of Trade (CBOT®) [CBOT.com](http://CBOT.com)

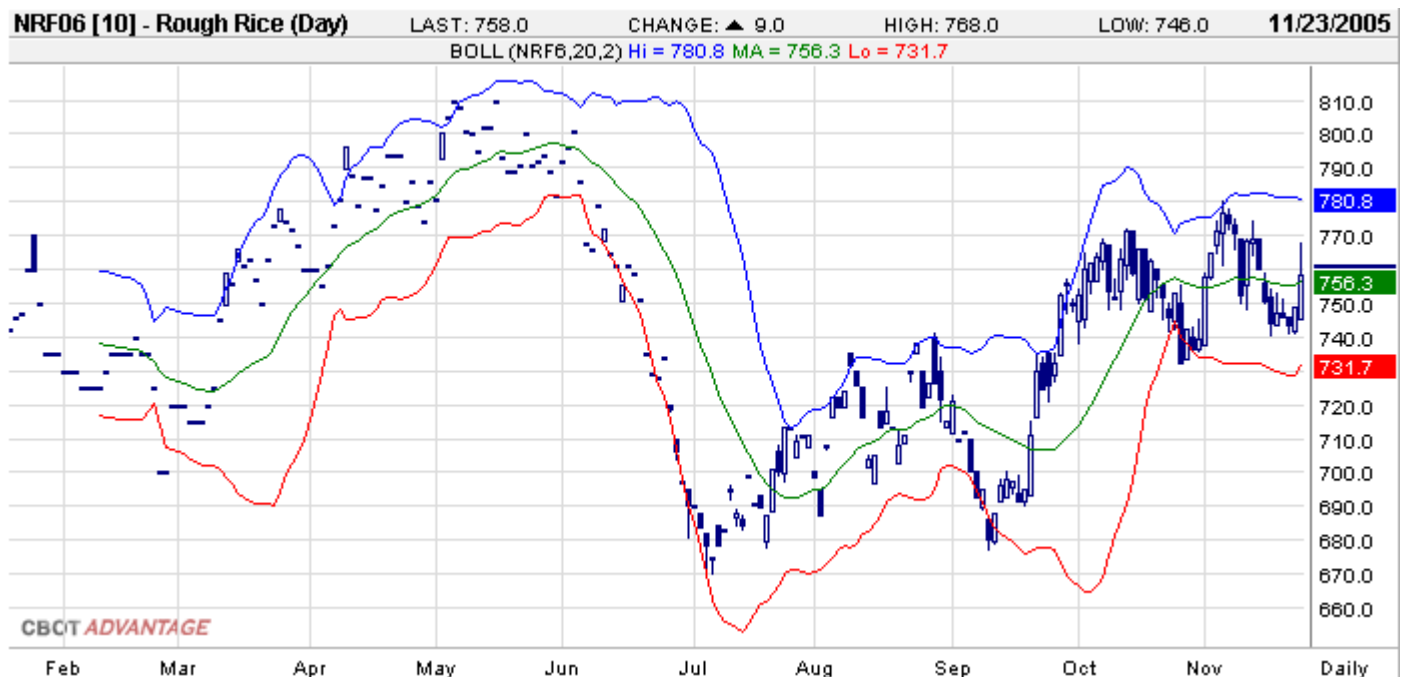
Copyright © Board of Trade of the City of Chicago, Inc. 2005 ALL RIGHTS RESERVED

**Rice Chart 2. CBOT Rough Rice Futures Chart, January 2005, Parabolic Time/Price (20, 20, 200)**



Source: Chicago Board of Trade (CBOT®) [CBOT.com](http://CBOT.com)  
 Copyright © Board of Trade of the City of Chicago, Inc. 2005 ALL RIGHTS RESERVED

**Rice Chart 3. CBOT Rough Rice Futures Chart, January 2005, Bollinger Bands (20, 200)**



Source: Chicago Board of Trade (CBOT®) [CBOT.com](http://CBOT.com)  
 Copyright © Board of Trade of the City of Chicago, Inc. 2005 ALL RIGHTS RESERVED

**Rice Chart 4. CBOT Rough Rice Futures Chart, January 2005, Wilder's RSI (14)**



Source: Chicago Board of Trade (CBOT®) [CBOT.com](http://CBOT.com)  
 Copyright © Board of Trade of the City of Chicago, Inc. 2005 ALL RIGHTS RESERVED

**Rice Chart 5. CBOT Rough Rice Futures Chart, January 2005, Slow Stochastic (14, 3, 3)**



Source: Chicago Board of Trade (CBOT®) [CBOT.com](http://CBOT.com)  
 Copyright © Board of Trade of the City of Chicago, Inc. 2005 ALL RIGHTS RESERVED

**Rice Chart 6. CBOT Rough Rice Futures Chart, January 2005, Fast Stochastic (14, 3)**



Source: Chicago Board of Trade (CBOT®) [CBOT.com](http://CBOT.com)  
 Copyright © Board of Trade of the City of Chicago, Inc. 2005 ALL RIGHTS RESERVED

**Rice Chart 7. CBOT Rough Rice Futures Chart, January 2005, Accumulative Distribution Index**



Source: Chicago Board of Trade (CBOT®) [CBOT.com](http://CBOT.com)  
 Copyright © Board of Trade of the City of Chicago, Inc. 2005 ALL RIGHTS RESERVED

# Rice Chart 8. CBOT Rough Rice Futures Chart, January 2005, Volume and Open Interest (1, 1)



Source: Chicago Board of Trade (CBOT®) [CBOT.com](http://CBOT.com)

Copyright © Board of Trade of the City of Chicago, Inc. 2005 ALL RIGHTS RESERVED

# CBOT Soybeans Futures

## Open Auction

Exp	Last 1 Last 2	Net Chg	Open	High	Low	Close	Settle	Prev Settle	Hi/Lo Limit
06Jan 	562'0 12:04 561'0 12:04	-10'2	570'0 569'4 9:34	571'2 9:43	561'0 12:00	563'0 561'0 12:04	562'0	572'2	612'0 512'0
06Mar 	568'6 12:03 567'0 12:03	-11'2	577'0 577'4 9:31	579'4 9:43	567'0 12:00	570'4 567'0 12:03	568'6	580'0	618'6 518'6
06May 	576'4 12:00 576'0 12:00	-9'6	584'0 9:31	585'0 9:30	576'0 11:50	577'0 576'0 12:00	576'4	586'2	626'4 526'4
06Jul 	582'2 12:04 581'4 12:04	-9'0	589'0 589'4 9:30	589'4 9:30	581'4 11:52	583'0 581'4 12:04	582'2	591'2	632'2 532'2
06Aug 	585'0 12:04	-8'4	589'6 9:33	589'6 9:33	585'0 12:04	585'0 12:04	585'0	593'4	635'0 535'0
06Sep 	585'0 12:04	-7'0	593'0 9:43	593'0 9:43	585'0 12:04	585'0 12:04	585'0	592'0	635'0 535'0
06Nov 	590'0 12:04 589'2 12:04	-6'6	595'0 594'2 9:32	595'4 9:36	589'2 11:59	590'4 589'2 12:04	590'0	596'6	640'0 540'0
07Jan 	594'0 12:06	-6'0	598'4 10:43	598'4 10:43	594'0 12:06	594'0 12:06	594'0	600'0	644'0 544'0
07Mar 	597'0 12:06	-5'0				597'0 12:06	597'0	602'0	647'0 547'0
07Jul 	613'0 12:06	-1'0	613'0 11:13	613'0 11:13	613'0 11:13	613'0 12:06	613'0	614'0	663'0 563'0
07Nov	610'0 12:07	-2'0	610'0 11:13	610'0 11:13	610'0 11:13	610'0 12:07	610'0	612'0	660'0 560'0

Table generated November 23, 2005 15:20 CST

= Chart  = Option

**Soybeans Chart 1. CBOT Soybeans Futures Chart, January 2005, Variable Moving Average (5, 10, 20)**



Source: Chicago Board of Trade (CBOT®) [CBOT.com](http://CBOT.com)  
 Copyright © Board of Trade of the City of Chicago, Inc. 2005 ALL RIGHTS RESERVED

**Soybeans Chart 2. CBOT Soybeans Futures Chart, January 2005, Parabolic Time/Price (20, 20, 200)**



Source: Chicago Board of Trade (CBOT®) [CBOT.com](http://CBOT.com)  
 Copyright © Board of Trade of the City of Chicago, Inc. 2005 ALL RIGHTS RESERVED

**Soybeans Chart 3. CBOT Soybeans Futures Chart, January 2005, Bollinger Bands (20, 200)**



Source: Chicago Board of Trade (CBOT®) [CBOT.com](http://CBOT.com)  
 Copyright © Board of Trade of the City of Chicago, Inc. 2005 ALL RIGHTS RESERVED

**Soybeans Chart 4. CBOT Soybeans Futures Chart, January 2005, Wilder's RSI (14)**



Source: Chicago Board of Trade (CBOT®) [CBOT.com](http://CBOT.com)  
 Copyright © Board of Trade of the City of Chicago, Inc. 2005 ALL RIGHTS RESERVED

**Soybeans Chart 5. [CBOT Soybeans Futures Chart, January 2005, Slow Stochastic \(14, 3, 3\)](#)**



Source: Chicago Board of Trade (CBOT®) [CBOT.com](#)  
 Copyright © Board of Trade of the City of Chicago, Inc. 2005 ALL RIGHTS RESERVED

**Soybeans Chart 6. [CBOT Soybeans Futures Chart, January 2005, Fast Stochastic \(14, 3\)](#)**



Source: Chicago Board of Trade (CBOT®) [CBOT.com](#)  
 Copyright © Board of Trade of the City of Chicago, Inc. 2005 ALL RIGHTS RESERVED

## Soybeans Chart 7. [CBOT Soybeans Futures Chart, January 2005, Accumulative Distribution Index](#)



Source: Chicago Board of Trade (CBOT®) [CBOT.com](#)  
 Copyright © Board of Trade of the City of Chicago, Inc. 2005 ALL RIGHTS RESERVED

## Soybeans Chart 8. [CBOT Soybeans Futures Chart, January 2005, Volume and Open Interest \(1, 1\)](#)



Source: Chicago Board of Trade (CBOT®) [CBOT.com](#)  
 Copyright © Board of Trade of the City of Chicago, Inc. 2005 ALL RIGHTS RESERVED

# CBOT Corn Futures

## Open Auction







Exp	Last 1 Last 2	Net Chg	Open	High	Low	Close	Settle	Prev Settle	Hi/Lo Limit
05Dec	190'6 12:02 190'6 12:02	-0'6	191'2 191'4 9:30	191'6 9:32	190'4 11:52	190'4 190'6 12:02	190'6	191'4	210'6 170'6
06Mar 	204'2 12:02 204'0 12:02	-1'0	205'2 205'0 9:30	205'2 9:30	204'0 11:40	204'4 204'0 12:02	204'2	205'2	224'2 184'2
06May 	212'4 12:02 212'4 12:02	-1'0	213'2 9:30	213'4 9:45	212'0 11:05	212'2 212'4 12:02	212'4	213'4	232'4 192'4
06Jul 	220'2 12:03 220'2 12:03	-1'0	221'0 221'2 9:31	221'2 9:31	220'0 11:42	220'0 220'2 12:03	220'2	221'2	240'2 200'2
06Sep 	229'2 12:03 229'2 12:03	-1'0	230'0 230'2 9:33	230'2 9:33	229'0 11:46	229'0 229'2 12:03	229'2	230'2	249'2 209'2
06Dec 	240'2 12:03 240'2 12:03	-0'6	240'6 241'0 9:32	241'0 9:31	240'0 11:42	240'0 240'2 12:03	240'2	241'0	260'2 220'2
07Mar 	248'0 12:03 248'0 12:03	-1'0	248'4 9:54	248'6 10:05	247'6 11:59	247'6 248'0 12:03	248'0	249'0	268'0 228'0
07May 	252'4 12:03	-1'0	253'4 9:35	253'4 9:33	252'4 11:55	252'4 12:03	252'4	253'4	272'4 232'4
07Jul	257'0 12:03	-0'6	257'4 10:20	257'4 10:20	257'0 11:46	257'0 12:03	257'0	257'6	277'0 237'0
07Dec ----	258'0 12:03 258'0 12:03	-0'4	258'0 9:37	258'4 9:55	257'4 11:21	257'6 258'0 12:03	258'0	258'4	278'0 238'0

Table generated November 23, 2005 15:20 CST

= Chart  = Option

**Corn Chart 1. CBOT Corn Futures Chart, December 2005, Variable Moving Average (5, 10, 20)**



Source: Chicago Board of Trade (CBOT®) [CBOT.com](http://CBOT.com)  
 Copyright © Board of Trade of the City of Chicago, Inc. 2005 ALL RIGHTS RESERVED

**Corn Chart 2. CBOT Corn Futures Chart, December 2005, Parabolic Time/Price (20, 20, 200)**



Source: Chicago Board of Trade (CBOT®) [CBOT.com](http://CBOT.com)  
 Copyright © Board of Trade of the City of Chicago, Inc. 2005 ALL RIGHTS RESERVED

### Corn Chart 3. CBOT Corn Futures Chart, December 2005, Bollinger Bands (20, 200)



Source: Chicago Board of Trade (CBOT®) [CBOT.com](http://CBOT.com)  
 Copyright © Board of Trade of the City of Chicago, Inc. 2005 ALL RIGHTS RESERVED

### Corn Chart 4. CBOT Corn Futures Chart, December 2005, Wilder's RSI (14)



Source: Chicago Board of Trade (CBOT®) [CBOT.com](http://CBOT.com)  
 Copyright © Board of Trade of the City of Chicago, Inc. 2005 ALL RIGHTS RESERVED

**Corn Chart 5. CBOT Corn Futures Chart, December 2005, Slow Stochastic (14, 3, 3)**



Source: Chicago Board of Trade (CBOT®) [CBOT.com](http://CBOT.com)  
 Copyright © Board of Trade of the City of Chicago, Inc. 2005 ALL RIGHTS RESERVED

**Corn Chart 6. CBOT Corn Futures Chart, December 2005, Fast Stochastic (14, 3)**



Source: Chicago Board of Trade (CBOT®) [CBOT.com](http://CBOT.com)  
 Copyright © Board of Trade of the City of Chicago, Inc. 2005 ALL RIGHTS RESERVED

**Corn Chart 7. CBOT Corn Futures Chart, December 2005, Accumulative Distribution Index**



Source: Chicago Board of Trade (CBOT®) [CBOT.com](http://CBOT.com)  
 Copyright © Board of Trade of the City of Chicago, Inc. 2005 ALL RIGHTS RESERVED

**Corn Chart 8. CBOT Corn Futures Chart, December 2005, Volume and Open Interest (1, 1)**



Source: Chicago Board of Trade (CBOT®) [CBOT.com](http://CBOT.com)  
 Copyright © Board of Trade of the City of Chicago, Inc. 2005 ALL RIGHTS RESERVED

# CBOT Wheat Futures

## Open Auction

Exp	Last 1 Last 2	Net Chg	Open	High	Low	Close	Settle	Prev Settle	Hi/Lo Limit
05Dec	297'0 12:03 297'0 12:03	Unch	298'4 298'0 9:30	299'0 9:35	296'4 11:06	296'6 297'0 12:03	297'0	297'0	327'0 267'0
06Mar ☒	312'6 12:05 313'0 12:05	Unch	313'4 314'4 9:30	315'0 9:33	312'2 11:06	312'4 313'0 12:05	312'6	312'6	342'6 282'6
06May ☒	321'4 12:03	-0'2	322'0 323'0 9:33	323'4 9:35	321'4 11:09	321'4 12:03	321'4	321'6	351'4 291'4
06Jul ☒	330'6 12:03 331'0 12:03	Unch	332'0 331'4 9:32	332'4 10:00	329'4 11:07	330'4 331'0 12:03	330'6	330'6	360'6 300'6
06Sep ☒	339'0 12:03	-0'2	340'4 9:34	340'4 9:33	338'0 11:11	339'0 12:03	339'0	339'2	369'0 309'0
06Dec ☒	350'4 12:03	-0'2	352'4 9:40	353'0 10:00	350'4 11:08	350'4 12:03	350'4	350'6	380'4 320'4
07Mar ☒	358'0 12:04	Unch				358'0 12:04	358'0	358'0	388'0 328'0
07Jul ---	363'0 12:04	Unch				363'0 12:04	363'0	363'0	393'0 333'0

Table generated November 23, 2005 15:30 CST = Chart ☒ = Option

## Wheat Chart 1. CBOT Wheat Futures Chart, July 2006, Variable Moving Average (5, 10, 20)



Source: Chicago Board of Trade (CBOT®) [CBOT.com](http://CBOT.com)  
 Copyright © Board of Trade of the City of Chicago, Inc. 2005 ALL RIGHTS RESERVED

**Wheat Chart 2. CBOT Wheat Futures Chart, July 2006, Parabolic Time/Price (20, 20, 200)**



Source: Chicago Board of Trade (CBOT®) [CBOT.com](http://CBOT.com)  
 Copyright © Board of Trade of the City of Chicago, Inc. 2005 ALL RIGHTS RESERVED

**Wheat Chart 3. CBOT Wheat Futures Chart, July 2006, Bollinger Bands (20, 200)**



Source: Chicago Board of Trade (CBOT®) [CBOT.com](http://CBOT.com)  
 Copyright © Board of Trade of the City of Chicago, Inc. 2005 ALL RIGHTS RESERVED

**Wheat Chart 4. [CBOT Wheat Futures Chart, July 2006, Wilder's RSI \(14\)](#)**



Source: Chicago Board of Trade (CBOT®) [CBOT.com](#)  
 Copyright © Board of Trade of the City of Chicago, Inc. 2005 ALL RIGHTS RESERVED

**Wheat Chart 5. [CBOT Wheat Futures Chart, July 2006, Slow Stochastic \(14, 3, 3, 3\)](#)**



Source: Chicago Board of Trade (CBOT®) [CBOT.com](#)  
 Copyright © Board of Trade of the City of Chicago, Inc. 2005 ALL RIGHTS RESERVED

**Wheat Chart 6. [CBOT Wheat Futures Chart, July 2006, Fast Stochastic \(14, 3\)](#)**



Source: Chicago Board of Trade (CBOT®) [CBOT.com](http://CBOT.com)  
 Copyright © Board of Trade of the City of Chicago, Inc. 2005 ALL RIGHTS RESERVED

**Wheat Chart 7. [CBOT Wheat Futures Chart, July 2006, Accumulative Distribution Index](#)**



Source: Chicago Board of Trade (CBOT®) [CBOT.com](http://CBOT.com)  
 Copyright © Board of Trade of the City of Chicago, Inc. 2005 ALL RIGHTS RESERVED

# Wheat Chart 8. CBOT Wheat Futures Chart, July 2006, Volume and Open Interest (1, 1)



Source: Chicago Board of Trade (CBOT®) [CBOT.com](http://CBOT.com)

Copyright © Board of Trade of the City of Chicago, Inc. 2005 ALL RIGHTS RESERVED

The Arkansas Cooperative Extension Service offers its programs to all eligible persons regardless of race, color, national origin, religion, gender, age, disability, marital or veteran status, or any other legally protected status, and is an Equal Opportunity Employer.