

# Daily Grain and Soybean Charts

Rice, Soybeans, Corn and Wheat Charts Included

*Bobby Coats - Extension Agricultural Policy Analyst*

*November 2, 2005*

<http://www.aragriculture.org/agfoodpolicy/ricesitol/default.asp>

## CBOT Rough Rice Futures (RR)

Open Auction

Exp	Last 1 Last 2	Net Chg	Open	High	Low	Close	Settle	Prev Settle	Hi/Lo Limit
05Nov	737'0 13:32	+8'0	732'0 735'0 9:17	737'0 10:02	731'0 9:38	737'0 13:32	737'0	729'0	
06Jan ☒	764'5 13:32 765'0 13:32	+7'0	758'0 760'0 9:16	765'0 10:01	757'0 9:19	764'0 765'0 13:32	764'5	757'5	814'5 714'5
06Mar ☒	786'0 13:32	+6'0	781'0 784'0 9:18	787'0 11:19	780'0 9:18	786'0 13:32	786'0	780'0	836'0 736'0
06May ☒	806'0 13:32	+5'0	805'0 11:33	806'0 13:29	805'0 11:33	806'0 13:32	806'0	801'0	856'0 756'0
06Jul ☒	826'0 13:32	+5'0				826'0 13:32	826'0	821'0	876'0 776'0
06Sep ☒	834'0 13:32	+10'0				834'0 13:32	834'0	824'0	884'0 784'0
06Nov	850'0 A 9:28	Unch							

Table generated November 02, 2005 15:10 CST = Chart ☒ = Option

### Rice Chart 1. CBOT Rough Rice Futures Chart, November 2005, Variable Moving Average (5, 10, 20)



Source: Chicago Board of Trade (CBOT®) [CBOT.com](http://CBOT.com)

Copyright © Board of Trade of the City of Chicago, Inc. 2005 ALL RIGHTS RESERVED

**Rice Chart 2. CBOT Rough Rice Futures Chart, November 2005, Parabolic Time/Price (20, 20, 200)**



Source: Chicago Board of Trade (CBOT®) [CBOT.com](http://CBOT.com)  
 Copyright © Board of Trade of the City of Chicago, Inc. 2005 ALL RIGHTS RESERVED

**Rice Chart 3. CBOT Rough Rice Futures Chart, November 2005, Bollinger Bands (20, 200)**



Source: Chicago Board of Trade (CBOT®) [CBOT.com](http://CBOT.com)  
 Copyright © Board of Trade of the City of Chicago, Inc. 2005 ALL RIGHTS RESERVED

**Rice Chart 4. CBOT Rough Rice Futures Chart, November 2005, Wilder's RSI (14)**



Source: Chicago Board of Trade (CBOT®) [CBOT.com](http://CBOT.com)  
 Copyright © Board of Trade of the City of Chicago, Inc. 2005 ALL RIGHTS RESERVED

**Rice Chart 5. CBOT Rough Rice Futures Chart, November 2005, Slow Stochastic (14, 3, 3)**



Source: Chicago Board of Trade (CBOT®) [CBOT.com](http://CBOT.com)  
 Copyright © Board of Trade of the City of Chicago, Inc. 2005 ALL RIGHTS RESERVED

**Rice Chart 6. CBOT Rough Rice Futures Chart, November 2005, Fast Stochastic (14, 3)**



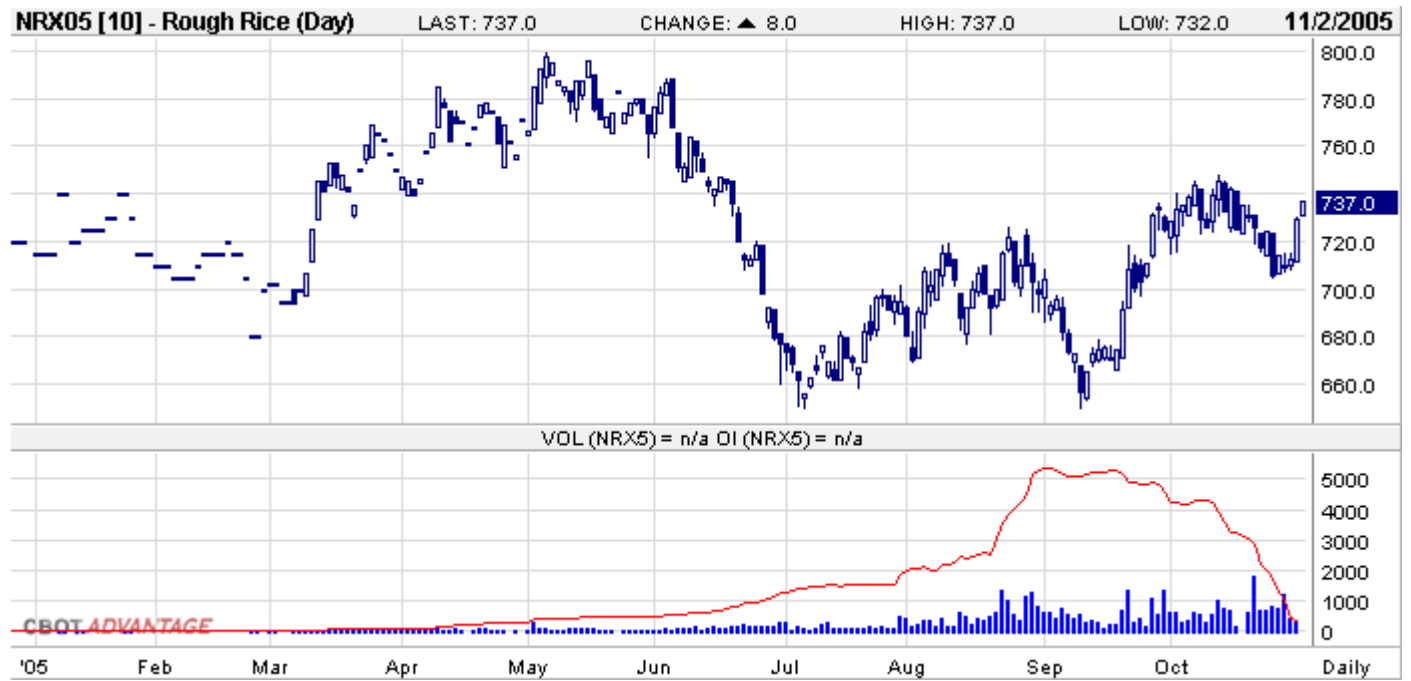
Source: Chicago Board of Trade (CBOT®) [CBOT.com](http://CBOT.com)  
 Copyright © Board of Trade of the City of Chicago, Inc. 2005 ALL RIGHTS RESERVED

**Rice Chart 7. CBOT Rough Rice Futures Chart, November 2005, Accumulative Distribution Index**



Source: Chicago Board of Trade (CBOT®) [CBOT.com](http://CBOT.com)  
 Copyright © Board of Trade of the City of Chicago, Inc. 2005 ALL RIGHTS RESERVED

**Rice Chart 8. CBOT Rough Rice Futures Chart, November 2005, Volume and Open Interest (1, 1)**



Source: Chicago Board of Trade (CBOT®) [CBOT.com](http://CBOT.com)

Copyright © Board of Trade of the City of Chicago, Inc. 2005 ALL RIGHTS RESERVED

# CBOT Soybeans Futures

## Open Auction








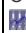

Exp	Last 1 Last 2	Net Chg	Open	High	Low	Close	Settle	Prev Settle	Hi/Lo Limit
05Nov	573'4 13:16 574'0 13:16	-1'0	572'0 571'0 9:30	576'0 10:49	571'0 9:30	573'0 574'0 13:16	573'4	574'4	
06Jan 	585'0 13:17 585'4 13:17	-1'4	583'4 582'4 9:32	587'4 10:49	581'4 9:31	584'4 585'4 13:17	585'0	586'4	635'0 535'0
06Mar 	593'0 13:17 593'2 13:17	-1'2	591'4 590'4 9:31	595'2 10:51	590'0 9:31	592'4 593'2 13:17	593'0	594'2	643'0 543'0
06May 	598'6 13:18 598'4 13:18	-1'4	597'0 596'0 9:30	601'0 10:49	596'0 9:30	599'0 598'4 13:18	598'6	600'2	648'6 548'6
06Jul 	603'6 13:18 604'0 13:18	-1'6	601'4 601'0 9:31	606'0 10:49	601'0 9:31	603'4 604'0 13:18	603'6	605'4	653'6 553'6
06Aug 	603'0 13:18	-2'6	605'0 9:47	605'0 9:47	603'0 13:14	603'0 13:18	603'0	605'6	653'0 553'0
06Sep 	604'0 13:18	Unch	604'0 9:35	607'0 10:53	604'0 9:35	604'0 13:18	604'0	604'0	654'0 554'0
06Nov 	609'2 13:18 610'0 13:18	Unch	606'0 606'4 9:32	611'4 10:50	606'0 9:32	608'4 610'0 13:18	609'2	609'2	659'2 559'2
07Jan  	612'0 13:18	-2'0	608'0 9:36	612'0 13:18	608'0 9:36	612'0 13:18	612'0	614'0	662'0 562'0
07Mar --- 	612'0 13:18	-2'0	612'0 9:48	612'0 9:48	612'0 9:48	612'0 13:18	612'0	614'0	662'0 562'0
07Nov	615'0 13:19	Unch				615'0 13:19	615'0	615'0	665'0 565'0

Table generated November 02, 2005 15:20 CST



= Chart



= Option

**Soybeans Chart 1. CBOT Soybeans Futures Chart, November 2005, Variable Moving Average (5, 10, 20)**



Source: Chicago Board of Trade (CBOT) [CBOT.com](http://CBOT.com)  
 Copyright © Board of Trade of the City of Chicago, Inc. 2005 ALL RIGHTS RESERVED

**Soybeans Chart 2. CBOT Soybeans Futures Chart, November 2005, Parabolic Time/Price (20, 20, 200)**



Source: Chicago Board of Trade (CBOT) [CBOT.com](http://CBOT.com)  
 Copyright © Board of Trade of the City of Chicago, Inc. 2005 ALL RIGHTS RESERVED

**Soybeans Chart 3. CBOT Soybeans Futures Chart, November 2005, Bollinger Bands (20, 200)**



Source: Chicago Board of Trade (CBOT®) [CBOT.com](http://CBOT.com)  
 Copyright © Board of Trade of the City of Chicago, Inc. 2005 ALL RIGHTS RESERVED

**Soybeans Chart 4. CBOT Soybeans Futures Chart, November 2005, Wilder's RSI (14)**



Source: Chicago Board of Trade (CBOT®) [CBOT.com](http://CBOT.com)  
 Copyright © Board of Trade of the City of Chicago, Inc. 2005 ALL RIGHTS RESERVED

**Soybeans Chart 5. CBOT Soybeans Futures Chart, November 2005, Slow Stochastic (14, 3, 3)**



Source: Chicago Board of Trade (CBOT®) [CBOT.com](http://CBOT.com)  
 Copyright © Board of Trade of the City of Chicago, Inc. 2005 ALL RIGHTS RESERVED

**Soybeans Chart 6. CBOT Soybeans Futures Chart, November 2005, Fast Stochastic (14, 3)**



Source: Chicago Board of Trade (CBOT®) [CBOT.com](http://CBOT.com)  
 Copyright © Board of Trade of the City of Chicago, Inc. 2005 ALL RIGHTS RESERVED

**Soybeans Chart 7. CBOT Soybeans Futures Chart, November 2005, Accumulative Distribution Index**



Source: Chicago Board of Trade (CBOT®) [CBOT.com](http://CBOT.com)  
 Copyright © Board of Trade of the City of Chicago, Inc. 2005 ALL RIGHTS RESERVED

**Soybeans Chart 8. CBOT Soybeans Futures Chart, November 2005, Volume and Open Interest (1, 1)**



Source: Chicago Board of Trade (CBOT®) [CBOT.com](http://CBOT.com)  
 Copyright © Board of Trade of the City of Chicago, Inc. 2005 ALL RIGHTS RESERVED

# CBOT Corn Futures

## Open Auction

Exp	Last 1 Last 2	Net Chg	Open	High	Low	Close	Settle	Prev Settle	Hi/Lo Limit
05Dec ☒	196'0 13:18 195'6 13:18	-0'6	196'0 195'6 9:30	196'6 9:47	195'6 9:30	196'0 195'6 13:18	196'0	196'6	216'0 176'0
06Mar ☒	210'0 13:18 210'0 13:18	-0'6	210'0 209'6 9:31	210'4 9:49	209'6 9:30	209'6 210'0 13:18	210'0	210'6	230'0 190'0
06May ☒	218'0 13:18 217'6 13:18	-1'2	218'0 218'2 9:31	218'6 9:47	217'6 11:55	218'0 217'6 13:18	218'0	219'2	238'0 198'0
06Jul ☒	225'2 13:18 225'0 13:18	-0'6	225'0 225'2 9:32	226'0 9:54	225'0 9:30	225'2 225'0 13:18	225'2	226'0	245'2 205'2
06Sep ☒	233'0 13:18	-0'4	233'6 233'4 9:35	233'6 9:34	233'0 9:39	233'0 13:18	233'0	233'4	253'0 213'0
06Dec ☒	243'2 13:19	Unch	243'2 243'0 9:32	243'6 11:43	242'6 10:25	243'2 13:19	243'2	243'2	263'2 223'2
07Mar ☒	250'2 13:19	Unch	250'0 9:52	250'4 10:00	249'6 11:04	250'2 13:19	250'2	250'2	270'2 230'2
07May	254'2 13:19	Unch				254'2 13:19	254'2	254'2	274'2 234'2
07Jul ☒	257'2 13:19	Unch				257'2 13:19	257'2	257'2	277'2 237'2
07Dec	258'0 13:19	Unch	258'0 11:37	258'0 11:37	257'6 12:38	258'0 13:19	258'0	258'0	278'0 238'0

Table generated November 02, 2005 15:20 CST

= Chart ☒ = Option

**Corn Chart 1. CBOT Corn Futures Chart, December 2005, Variable Moving Average (5, 10, 20)**



Source: Chicago Board of Trade (CBOT®) [CBOT.com](http://CBOT.com)  
 Copyright © Board of Trade of the City of Chicago, Inc. 2005 ALL RIGHTS RESERVED

**Corn Chart 2. CBOT Corn Futures Chart, December 2005, Parabolic Time/Price (20, 20, 200)**



Source: Chicago Board of Trade (CBOT®) [CBOT.com](http://CBOT.com)  
 Copyright © Board of Trade of the City of Chicago, Inc. 2005 ALL RIGHTS RESERVED

**Corn Chart 3. CBOT Corn Futures Chart, December 2005, Bollinger Bands (20, 200)**



Source: Chicago Board of Trade (CBOT®) [CBOT.com](http://CBOT.com)  
 Copyright © Board of Trade of the City of Chicago, Inc. 2005 ALL RIGHTS RESERVED

**Corn Chart 4. CBOT Corn Futures Chart, December 2005, Wilder's RSI (14)**



Source: Chicago Board of Trade (CBOT®) [CBOT.com](http://CBOT.com)  
 Copyright © Board of Trade of the City of Chicago, Inc. 2005 ALL RIGHTS RESERVED

**Corn Chart 5. CBOT Corn Futures Chart, December 2005, Slow Stochastic (14, 3, 3, 3)**



Source: Chicago Board of Trade (CBOT®) [CBOT.com](http://CBOT.com)  
 Copyright © Board of Trade of the City of Chicago, Inc. 2005 ALL RIGHTS RESERVED

**Corn Chart 6. CBOT Corn Futures Chart, December 2005, Fast Stochastic (14, 3)**



Source: Chicago Board of Trade (CBOT®) [CBOT.com](http://CBOT.com)  
 Copyright © Board of Trade of the City of Chicago, Inc. 2005 ALL RIGHTS RESERVED

**Corn Chart 7. CBOT Corn Futures Chart, December 2005, Accumulative Distribution Index**



Source: Chicago Board of Trade (CBOT®) [CBOT.com](http://CBOT.com)  
 Copyright © Board of Trade of the City of Chicago, Inc. 2005 ALL RIGHTS RESERVED

**Corn Chart 8. CBOT Corn Futures Chart, December 2005, Volume and Open Interest (1, 1)**



Source: Chicago Board of Trade (CBOT®) [CBOT.com](http://CBOT.com)  
 Copyright © Board of Trade of the City of Chicago, Inc. 2005 ALL RIGHTS RESERVED

# CBOT Wheat Futures

## Open Auction

Exp	Last 1 Last 2	Net Chg	Open	High	Low	Close	Settle	Prev Settle	Hi/Lo Limit
05Dec ☒	313'0 13:19 313'4 13:19	-4'0	316'4 316'0 9:30	317'2 10:36	312'0 13:00	312'4 313'4 13:19	313'0	317'0	343'0 283'0
06Mar ☒	328'4 13:19 328'0 13:19	-4'2	332'0 331'0 9:31	332'2 9:48	327'2 13:04	329'0 328'0 13:19	328'4	332'6	358'4 298'4
06May ☒	337'2 13:20 337'4 13:20	-4'0	340'0 9:32	340'2 9:51	336'0 13:12	337'0 337'4 13:20	337'2	341'2	367'2 307'2
06Jul ☒	344'6 13:20 345'0 13:20	-3'4	347'4 347'0 9:32	348'0 9:44	343'4 13:01	344'4 345'0 13:20	344'6	348'2	374'6 314'6
06Sep ☒	352'4 13:20	-3'0	356'0 9:44	356'0 9:44	351'0 13:08	352'4 13:20	352'4	355'4	382'4 322'4
06Dec ☒	364'4 13:20	-3'4	367'0 9:38	367'4 9:45	363'4 13:07	364'4 13:20	364'4	368'0	394'4 334'4
07Mar	371'0 13:20	-2'4				371'0 13:20	371'0	373'4	401'0 341'0
07Jul ---	366'0 13:19	-2'4	367'0 13:06	367'0 13:06	366'0 13:08	366'0 13:19	366'0	368'4	396'0 336'0

Table generated November 02, 2005 15:40 CST = Chart ☒ = Option

## Wheat Chart 1. CBOT Wheat Futures Chart, July 2006, Variable Moving Average (5, 10, 20)



Source: Chicago Board of Trade (CBOT®) [CBOT.com](http://CBOT.com)

Copyright © Board of Trade of the City of Chicago, Inc. 2005 ALL RIGHTS RESERVED

**Wheat Chart 2. CBOT Wheat Futures Chart, July 2006, Parabolic Time/Price (20, 20, 200)**



Source: Chicago Board of Trade (CBOT®) [CBOT.com](http://CBOT.com)  
 Copyright © Board of Trade of the City of Chicago, Inc. 2005 ALL RIGHTS RESERVED

**Wheat Chart 3. CBOT Wheat Futures Chart, July 2006, Bollinger Bands (20, 200)**



Source: Chicago Board of Trade (CBOT®) [CBOT.com](http://CBOT.com)  
 Copyright © Board of Trade of the City of Chicago, Inc. 2005 ALL RIGHTS RESERVED

**Wheat Chart 4. [CBOT Wheat Futures Chart, July 2006, Wilder's RSI \(14\)](#)**



Source: Chicago Board of Trade (CBOT®) [CBOT.com](http://CBOT.com)  
 Copyright © Board of Trade of the City of Chicago, Inc. 2005 ALL RIGHTS RESERVED

**Wheat Chart 5. [CBOT Wheat Futures Chart, July 2006, Slow Stochastic \(14, 3, 3, 3\)](#)**



Source: Chicago Board of Trade (CBOT®) [CBOT.com](http://CBOT.com)  
 Copyright © Board of Trade of the City of Chicago, Inc. 2005 ALL RIGHTS RESERVED

**Wheat Chart 6. CBOT Wheat Futures Chart, July 2006, Fast Stochastic (14, 3)**



Source: Chicago Board of Trade (CBOT®) [CBOT.com](http://CBOT.com)  
 Copyright © Board of Trade of the City of Chicago, Inc. 2005 ALL RIGHTS RESERVED

**Wheat Chart 7. CBOT Wheat Futures Chart, July 2006, Accumulative Distribution Index**



Source: Chicago Board of Trade (CBOT®) [CBOT.com](http://CBOT.com)  
 Copyright © Board of Trade of the City of Chicago, Inc. 2005 ALL RIGHTS RESERVED

**Wheat Chart 8. CBOT Wheat Futures Chart, July 2006, Volume and Open Interest (1, 1)**



Source: Chicago Board of Trade (CBOT®) [CBOT.com](http://CBOT.com)  
Copyright © Board of Trade of the City of Chicago, Inc. 2005 ALL RIGHTS RESERVED

The Arkansas Cooperative Extension Service offers its programs to all eligible persons regardless of race, color, national origin, religion, gender, age, disability, marital or veteran status, or any other legally protected status, and is an Equal Opportunity Employer.