

## CBOT Rough Rice Futures (RR)

Open Auction

Exp	Last 1 Last 2	Net Chg	Open	High	Low	Close	Settle	Prev Settle	Hi/Lo Limit
05Nov	729'0 13:33	+17'0	712'0 9:16	730'0 13:19	712'0 9:16	729'0 13:33	729'0	712'0	
06Jan ☺	757'5 13:33 758'0 13:33	+18'0	738'0 739'0 9:16	759'0 13:18	738'0 9:15	757'0 758'0 13:33	757'5	739'5	807'5 707'5
06Mar ☺	780'0 13:33	+17'0	763'0 9:16	781'0 13:18	763'0 9:15	780'0 13:33	780'0	763'0	830'0 730'0
06May ☺	801'0 13:33	+16'0				801'0 13:33	801'0	785'0	851'0 751'0
06Jul ☺	821'0 13:33	+14'0				821'0 13:33	821'0	807'0	871'0 771'0
06Sep ☺	824'0 13:33	-1'0	824'0 10:08	824'0 10:08	824'0 10:08	824'0 13:33	824'0	825'0	874'0 774'0
06Nov	861'0 A 11:42	Unch							

Table generated November 01, 2005 14:40 CST = Chart ☺ = Option

**Rice Chart 1. CBOT Rough Rice Futures Chart, November 2005, Variable Moving Average (5, 10, 20)**



**Rice Chart 2. CBOT Rough Rice Futures Chart, November 2005, Parabolic Time/Price (20, 20, 200)**



Source: Chicago Board of Trade (CBOT®) [CBOT.com](http://CBOT.com)  
 Copyright © Board of Trade of the City of Chicago, Inc. 2005 ALL RIGHTS RESERVED

**Rice Chart 3. CBOT Rough Rice Futures Chart, November 2005, Bollinger Bands (20, 200)**



Source: Chicago Board of Trade (CBOT®) [CBOT.com](http://CBOT.com)  
 Copyright © Board of Trade of the City of Chicago, Inc. 2005 ALL RIGHTS RESERVED

**Rice Chart 4. CBOT Rough Rice Futures Chart, November 2005, Wilder's RSI (14)**



Source: Chicago Board of Trade (CBOT®) [CBOT.com](http://CBOT.com)  
 Copyright © Board of Trade of the City of Chicago, Inc. 2005 ALL RIGHTS RESERVED

**Rice Chart 5. CBOT Rough Rice Futures Chart, November 2005, Slow Stochastic (14, 3, 3)**



Source: Chicago Board of Trade (CBOT®) [CBOT.com](http://CBOT.com)  
 Copyright © Board of Trade of the City of Chicago, Inc. 2005 ALL RIGHTS RESERVED

**Rice Chart 6. CBOT Rough Rice Futures Chart, November 2005, Fast Stochastic (14, 3)**



Source: Chicago Board of Trade (CBOT®) [CBOT.com](http://CBOT.com)  
 Copyright © Board of Trade of the City of Chicago, Inc. 2005 ALL RIGHTS RESERVED

**Rice Chart 7. CBOT Rough Rice Futures Chart, November 2005, Accumulative Distribution Index**



Source: Chicago Board of Trade (CBOT®) [CBOT.com](http://CBOT.com)  
 Copyright © Board of Trade of the City of Chicago, Inc. 2005 ALL RIGHTS RESERVED

**Rice Chart 8. CBOT Rough Rice Futures Chart, November 2005, Volume and Open Interest (1, 1)**



Source: Chicago Board of Trade (CBOT®) [CBOT.com](http://CBOT.com)

Copyright © Board of Trade of the City of Chicago, Inc. 2005 ALL RIGHTS RESERVED

# CBOT Soybeans Futures

## Open Auction




Exp	Last 1 Last 2	Net Chg	Open	High	Low	Close	Settle	Prev Settle	Hi/Lo Limit
05Nov	574'4 13:17 574'0 13:17	+9'6	568'0 568'4 9:30	578'4 10:46	567'0 9:36	575'0 574'0 13:17	574'4	564'6	
06Jan 	586'4 13:19 585'4 13:19	+10'4	578'4 579'0 9:33	589'4 10:46	578'2 9:36	587'4 585'4 13:19	586'4	576'0	636'4 536'4
06Mar 	594'2 13:18 593'4 13:18	+10'0	586'0 587'0 9:31	597'0 10:46	586'0 9:30	595'0 593'4 13:18	594'2	584'2	644'2 544'2
06May 	600'2 13:18 599'4 13:18	+10'6	592'0 593'0 9:30	602'4 10:46	592'0 9:30	601'0 599'4 13:18	600'2	589'4	650'2 550'2
06Jul 	605'4 13:18 605'0 13:18	+10'0	599'0 598'4 9:31	608'0 10:45	597'4 9:36	606'0 605'0 13:18	605'4	595'4	655'4 555'4
06Aug 	605'6 13:19 604'0 13:19	+10'2	601'4 9:33	607'4 13:19	600'4 9:40	607'4 604'0 13:19	605'6	595'4	655'6 555'6
06Sep 	604'0 13:19	+7'2	601'0 601'4 9:35	607'0 10:49	599'4 9:39	604'0 13:19	604'0	596'6	654'0 554'0
06Nov 	609'2 13:19 608'4 13:19	+8'6	603'0 604'4 9:32	612'4 10:46	603'0 9:32	610'0 608'4 13:19	609'2	600'4	659'2 559'2
07Jan 	614'0 13:19	+9'0	612'0 10:59	614'0 13:10	611'0 12:49	614'0 13:19	614'0	605'0	664'0 564'0
07Mar 	614'0 13:20	+7'0	616'0 10:37	616'0 10:37	614'0 10:51	614'0 13:20	614'0	607'0	664'0 564'0
07Nov ---	615'0 13:20	Unch				615'0 13:20	615'0	615'0	665'0 565'0

Table generated November 01, 2005 14:50 CST

= Chart  = Option

**Soybeans Chart 1. CBOT Soybeans Futures Chart, November 2005, Variable Moving Average (5, 10, 20)**



Source: Chicago Board of Trade (CBOT®) [CBOT.com](http://CBOT.com)  
 Copyright © Board of Trade of the City of Chicago, Inc. 2005 ALL RIGHTS RESERVED

**Soybeans Chart 2. CBOT Soybeans Futures Chart, November 2005, Parabolic Time/Price (20, 20, 200)**



Source: Chicago Board of Trade (CBOT®) [CBOT.com](http://CBOT.com)  
 Copyright © Board of Trade of the City of Chicago, Inc. 2005 ALL RIGHTS RESERVED

**Soybeans Chart 3. CBOT Soybeans Futures Chart, November 2005, Bollinger Bands (20, 200)**



Source: Chicago Board of Trade (CBOT®) [CBOT.com](http://CBOT.com)  
 Copyright © Board of Trade of the City of Chicago, Inc. 2005 ALL RIGHTS RESERVED

**Soybeans Chart 4. CBOT Soybeans Futures Chart, November 2005, Wilder's RSI (14)**



Source: Chicago Board of Trade (CBOT®) [CBOT.com](http://CBOT.com)  
 Copyright © Board of Trade of the City of Chicago, Inc. 2005 ALL RIGHTS RESERVED

**Soybeans Chart 5. CBOT Soybeans Futures Chart, November 2005, Slow Stochastic (14, 3, 3)**



Source: Chicago Board of Trade (CBOT®) [CBOT.com](http://CBOT.com)  
 Copyright © Board of Trade of the City of Chicago, Inc. 2005 ALL RIGHTS RESERVED

**Soybeans Chart 6. CBOT Soybeans Futures Chart, November 2005, Fast Stochastic (14, 3)**



Source: Chicago Board of Trade (CBOT®) [CBOT.com](http://CBOT.com)  
 Copyright © Board of Trade of the City of Chicago, Inc. 2005 ALL RIGHTS RESERVED

**Soybeans Chart 7. CBOT Soybeans Futures Chart, November 2005, Accumulative Distribution Index**



Source: Chicago Board of Trade (CBOT®) [CBOT.com](http://CBOT.com)  
 Copyright © Board of Trade of the City of Chicago, Inc. 2005 ALL RIGHTS RESERVED

**Soybeans Chart 8. CBOT Soybeans Futures Chart, November 2005, Volume and Open Interest (1, 1)**



Source: Chicago Board of Trade (CBOT®) [CBOT.com](http://CBOT.com)  
 Copyright © Board of Trade of the City of Chicago, Inc. 2005 ALL RIGHTS RESERVED

# CBOT Corn Futures

## Open Auction

Exp	Last 1 Last 2	Net Chg	Open	High	Low	Close	Settle	Prev Settle	Hi/Lo Limit
05Dec ☒	196'6 13:18 196'6 13:18	+0'4	196'2 196'6 9:30	198'4 10:37	196'2 9:30	197'0 196'6 13:18	196'6	196'2	216'6 176'6
06Mar ☒	210'6 13:18 211'0 13:18	+0'4	210'2 210'4 9:31	212'2 10:38	210'0 9:31	210'6 211'0 13:18	210'6	210'2	230'6 190'6
06May ☒	219'2 13:18 219'2 13:18	+0'4	218'6 218'4 9:31	220'2 10:38	218'2 9:36	219'4 219'2 13:18	219'2	218'6	239'2 199'2
06Jul ☒	226'0 13:19	+0'2	225'6 226'0 9:30	227'2 10:37	225'4 9:39	226'0 13:19	226'0	225'6	246'0 206'0
06Sep ☒	233'4 13:19 233'4 13:19	+0'4	233'2 233'0 9:41	234'4 10:34	233'0 9:41	233'6 233'4 13:19	233'4	233'0	253'4 213'4
06Dec ☒	243'2 13:19	Unch	243'4 243'2 9:32	244'6 10:46	243'0 9:39	243'2 13:19	243'2	243'2	263'2 223'2
07Mar ☒	250'2 13:19	Unch	251'0 10:39	251'0 10:39	249'6 12:14	250'2 13:19	250'2	250'2	270'2 230'2
07May	254'2 13:19	Unch				254'2 13:19	254'2	254'2	274'2 234'2
07Jul ---	257'2 13:19	+0'2	257'2 11:21	257'4 11:37	257'0 11:29	257'2 13:19	257'2	257'0	277'2 237'2
07Dec	258'0 13:19	Unch	258'0 9:48	258'0 9:48	257'6 13:10	258'0 13:19	258'0	258'0	278'0 238'0

Table generated November 01, 2005 15:10 CST

= Chart ☒ = Option

**Corn Chart 1. CBOT Corn Futures Chart, December 2005, Variable Moving Average (5, 10, 20)**



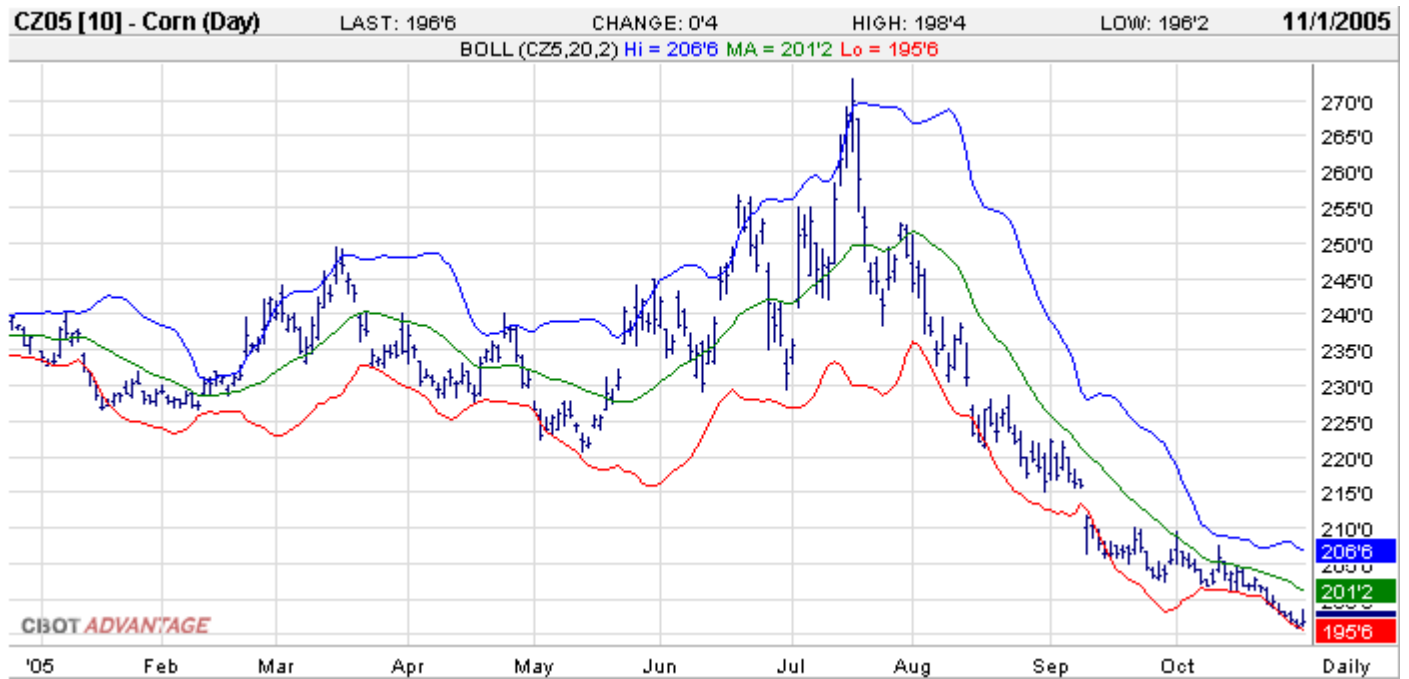
Source: Chicago Board of Trade (CBOT®) [CBOT.com](http://CBOT.com)  
 Copyright © Board of Trade of the City of Chicago, Inc. 2005 ALL RIGHTS RESERVED

**Corn Chart 2. CBOT Corn Futures Chart, December 2005, Parabolic Time/Price (20, 20, 200)**



Source: Chicago Board of Trade (CBOT®) [CBOT.com](http://CBOT.com)  
 Copyright © Board of Trade of the City of Chicago, Inc. 2005 ALL RIGHTS RESERVED

### Corn Chart 3. CBOT Corn Futures Chart, December 2005, Bollinger Bands (20, 200)



Source: Chicago Board of Trade (CBOT®) [CBOT.com](http://CBOT.com)  
 Copyright © Board of Trade of the City of Chicago, Inc. 2005 ALL RIGHTS RESERVED

### Corn Chart 4. CBOT Corn Futures Chart, December 2005, Wilder's RSI (14)



Source: Chicago Board of Trade (CBOT®) [CBOT.com](http://CBOT.com)  
 Copyright © Board of Trade of the City of Chicago, Inc. 2005 ALL RIGHTS RESERVED

**Corn Chart 5. CBOT Corn Futures Chart, December 2005, Slow Stochastic (14, 3, 3)**



Source: Chicago Board of Trade (CBOT®) [CBOT.com](http://CBOT.com)  
 Copyright © Board of Trade of the City of Chicago, Inc. 2005 ALL RIGHTS RESERVED

**Corn Chart 6. CBOT Corn Futures Chart, December 2005, Fast Stochastic (14, 3)**



Source: Chicago Board of Trade (CBOT®) [CBOT.com](http://CBOT.com)  
 Copyright © Board of Trade of the City of Chicago, Inc. 2005 ALL RIGHTS RESERVED

**Corn Chart 7. CBOT Corn Futures Chart, December 2005, Accumulative Distribution Index**



Source: Chicago Board of Trade (CBOT®) [CBOT.com](http://CBOT.com)  
 Copyright © Board of Trade of the City of Chicago, Inc. 2005 ALL RIGHTS RESERVED

**Corn Chart 8. CBOT Corn Futures Chart, December 2005, Volume and Open Interest (1, 1)**



Source: Chicago Board of Trade (CBOT®) [CBOT.com](http://CBOT.com)  
 Copyright © Board of Trade of the City of Chicago, Inc. 2005 ALL RIGHTS RESERVED

# CBOT Wheat Futures

## Open Auction

Exp	Last 1 Last 2	Net Chg	Open	High	Low	Close	Settle	Prev Settle	Hi/Lo Limit
05Dec ☒	317'0 13:18 316'4 13:18	Unch	317'2 318'0 9:30	320'4 10:00	314'4 11:53	317'2 316'4 13:18	317'0	317'0	347'0 287'0
06Mar ☒	332'6 13:19 333'0 13:19	Unch	333'0 332'4 9:31	335'4 10:00	330'0 11:54	332'2 333'0 13:19	332'6	332'6	362'6 302'6
06May ☒	341'2 13:18 341'4 13:18	+0'2	341'4 9:31	343'6 10:01	340'0 11:51	341'0 341'4 13:18	341'2	341'0	371'2 311'2
06Jul ☒	348'2 13:23 348'4 13:23	-0'4	348'4 349'0 9:31	351'0 10:00	346'0 11:53	348'0 348'4 13:23	348'2	348'6	378'2 318'2
06Sep ☒	355'4 13:18	-1'0	354'4 9:31	358'4 9:43	353'4 11:54	355'4 13:18	355'4	356'4	385'4 325'4
06Dec ☒	368'0 13:18 368'4 13:18	Unch	369'0 9:32	370'4 10:00	366'0 11:53	367'4 368'4 13:18	368'0	368'0	398'0 338'0
07Mar	373'4 13:19	+0'4	375'0 11:02	375'0 11:02	372'0 11:51	373'4 13:19	373'4	373'0	403'4 343'4
07Jul	368'4 13:19	+0'4	367'4 12:00	368'4 13:19	367'4 12:00	368'4 13:19	368'4	368'0	398'4 338'4

Table generated November 01, 2005 15:20 CST    --- = Chart    ☒ = Option

## Wheat Chart 1. CBOT Wheat Futures Chart, July 2006, Variable Moving Average (5, 10, 20)



Source: Chicago Board of Trade (CBOT®) [CBOT.com](http://CBOT.com)

Copyright © Board of Trade of the City of Chicago, Inc. 2005 ALL RIGHTS RESERVED

**Wheat Chart 2. CBOT Wheat Futures Chart, July 2006, Parabolic Time/Price (20, 20, 200)**



Source: Chicago Board of Trade (CBOT®) [CBOT.com](http://CBOT.com)  
 Copyright © Board of Trade of the City of Chicago, Inc. 2005 ALL RIGHTS RESERVED

**Wheat Chart 3. CBOT Wheat Futures Chart, July 2006, Bollinger Bands (20, 200)**



Source: Chicago Board of Trade (CBOT®) [CBOT.com](http://CBOT.com)  
 Copyright © Board of Trade of the City of Chicago, Inc. 2005 ALL RIGHTS RESERVED

**Wheat Chart 4. [CBOT Wheat Futures Chart, July 2006, Wilder's RSI \(14\)](#)**



Source: Chicago Board of Trade (CBOT®) [CBOT.com](#)  
 Copyright © Board of Trade of the City of Chicago, Inc. 2005 ALL RIGHTS RESERVED

**Wheat Chart 5. [CBOT Wheat Futures Chart, July 2006, Slow Stochastic \(14, 3, 3, 3\)](#)**



Source: Chicago Board of Trade (CBOT®) [CBOT.com](#)  
 Copyright © Board of Trade of the City of Chicago, Inc. 2005 ALL RIGHTS RESERVED

**Wheat Chart 6. [CBOT Wheat Futures Chart, July 2006, Fast Stochastic \(14, 3\)](#)**



Source: Chicago Board of Trade (CBOT®) [CBOT.com](http://CBOT.com)  
 Copyright © Board of Trade of the City of Chicago, Inc. 2005 ALL RIGHTS RESERVED

**Wheat Chart 7. [CBOT Wheat Futures Chart, July 2006, Accumulative Distribution Index](#)**



Source: Chicago Board of Trade (CBOT®) [CBOT.com](http://CBOT.com)  
 Copyright © Board of Trade of the City of Chicago, Inc. 2005 ALL RIGHTS RESERVED

# Wheat Chart 8. CBOT Wheat Futures Chart, July 2006, Volume and Open Interest (1, 1)



Source: Chicago Board of Trade (CBOT®) [CBOT.com](http://CBOT.com)

Copyright © Board of Trade of the City of Chicago, Inc. 2005 ALL RIGHTS RESERVED

The Arkansas Cooperative Extension Service offers its programs to all eligible persons regardless of race, color, national origin, religion, gender, age, disability, marital or veteran status, or any other legally protected status, and is an Equal Opportunity Employer.