

# Daily Grain and Soybean Charts

Rice, Soybeans, Corn and Wheat Charts Included

*Bobby Coats - Extension Agricultural Policy Analyst*

*December 7, 2005*

<http://www.aragriculture.org/agfoodpolicy/ricesitol/default.asp>

## CBOT Rough Rice Futures (RR)

Open Auction

Exp	Last 1 Last 2	Net Chg	Open	High	Low	Close	Settle	Prev Settle	Hi/Lo Limit
06Jan Ω	768'0 13:31	-4'5	772'0 9:16	772'0 9:15	760'0 12:04	768'0 13:31	768'0	772'5	818'0 718'0
06Mar Ω	794'0 13:31	-5'0	799'0 9:16	799'0 9:15	787'0 12:14	794'0 13:31	794'0	799'0	844'0 744'0
06May Ω	815'0 13:31	-6'0	813'0 11:45	817'0 13:21	813'0 11:45	815'0 13:31	815'0	821'0	865'0 765'0
06Jul Ω	839'0 13:31	-4'0	833'0 11:59	839'0 13:15	833'0 11:59	839'0 13:31	839'0	843'0	889'0 789'0
06Sep Ω	847'0 13:31	-1'0				847'0 13:31	847'0	848'0	897'0 797'0
06Nov Ω	855'0 13:31	-5'0				855'0 13:31	855'0	860'0	905'0 805'0
07Jan Ω	865'0 13:31	-5'0				865'0 13:31	865'0	870'0	915'0 815'0

Table generated December 07, 2005 15:00 CST = Chart Ω = Option

### Rice Chart 1. CBOT Rough Rice Futures Chart, January 2005, Variable Moving Average (5, 10, 20)



Source: Chicago Board of Trade (CBOT®) [CBOT.com](http://CBOT.com)

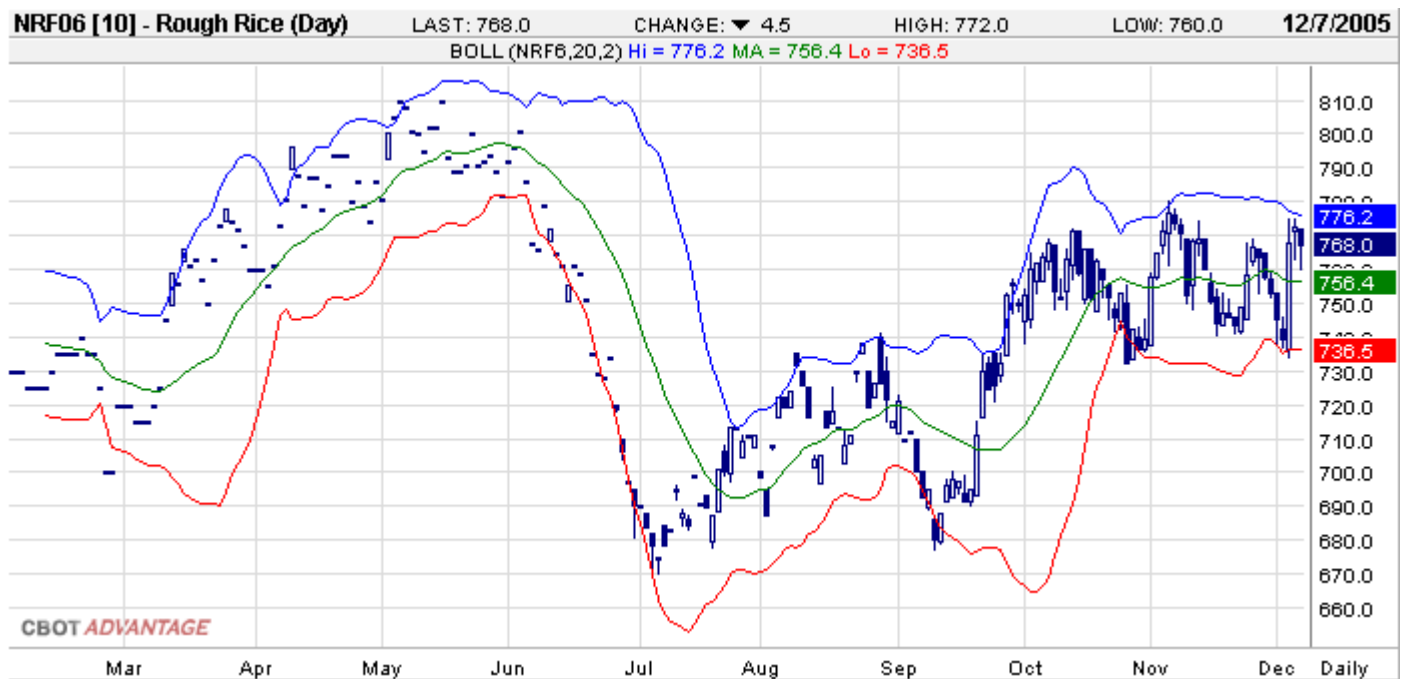
Copyright © Board of Trade of the City of Chicago, Inc. 2005 ALL RIGHTS RESERVED

**Rice Chart 2. CBOT Rough Rice Futures Chart, January 2005, Parabolic Time/Price (20, 20, 200)**



Source: Chicago Board of Trade (CBOT®) [CBOT.com](http://CBOT.com)  
 Copyright © Board of Trade of the City of Chicago, Inc. 2005 ALL RIGHTS RESERVED

**Rice Chart 3. CBOT Rough Rice Futures Chart, January 2005, Bollinger Bands (20, 200)**



Source: Chicago Board of Trade (CBOT®) [CBOT.com](http://CBOT.com)  
 Copyright © Board of Trade of the City of Chicago, Inc. 2005 ALL RIGHTS RESERVED

**Rice Chart 4. CBOT Rough Rice Futures Chart, January 2005, Wilder's RSI (14)**



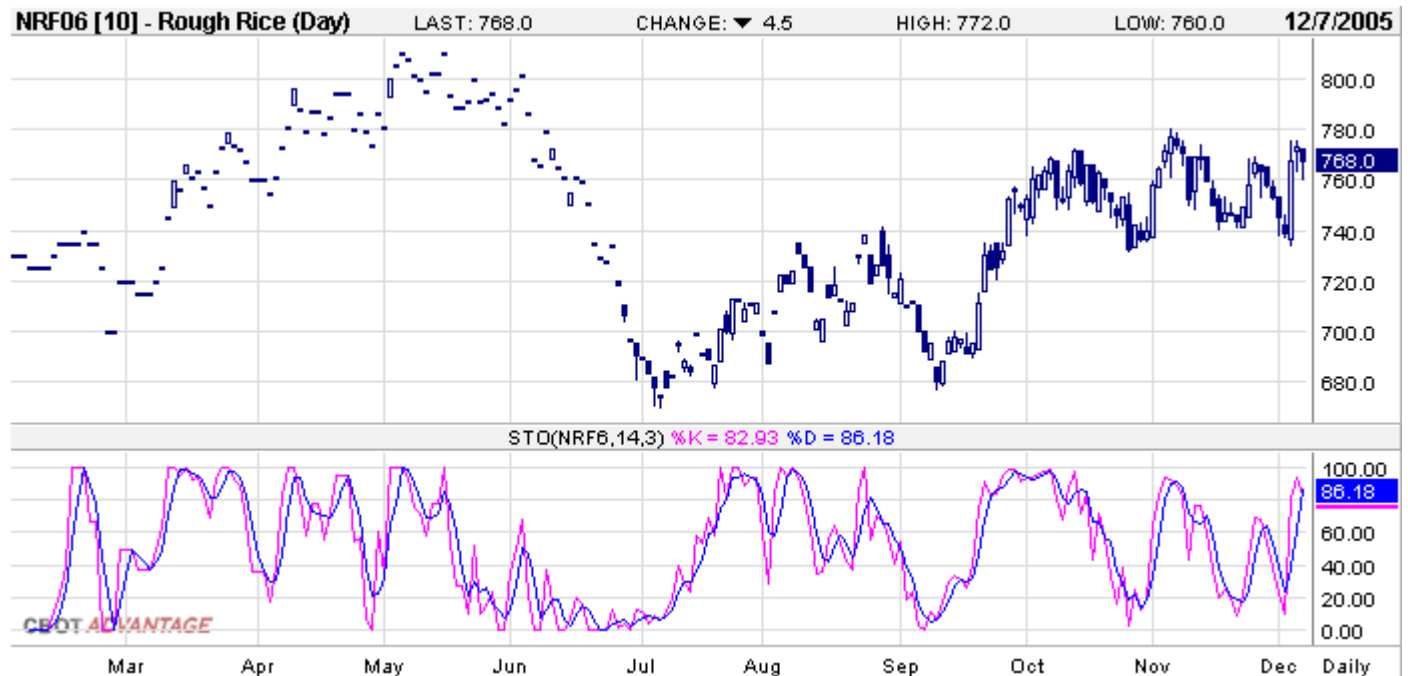
Source: Chicago Board of Trade (CBOT®) [CBOT.com](http://CBOT.com)  
 Copyright © Board of Trade of the City of Chicago, Inc. 2005 ALL RIGHTS RESERVED

**Rice Chart 5. CBOT Rough Rice Futures Chart, January 2005, Slow Stochastic (14, 3, 3, 3)**



Source: Chicago Board of Trade (CBOT®) [CBOT.com](http://CBOT.com)  
 Copyright © Board of Trade of the City of Chicago, Inc. 2005 ALL RIGHTS RESERVED

**Rice Chart 6. CBOT Rough Rice Futures Chart, January 2005, Fast Stochastic (14, 3)**



Source: Chicago Board of Trade (CBOT®) [CBOT.com](http://CBOT.com)  
 Copyright © Board of Trade of the City of Chicago, Inc. 2005 ALL RIGHTS RESERVED

**Rice Chart 7. CBOT Rough Rice Futures Chart, January 2005, Accumulative Distribution Index**



Source: Chicago Board of Trade (CBOT®) [CBOT.com](http://CBOT.com)  
 Copyright © Board of Trade of the City of Chicago, Inc. 2005 ALL RIGHTS RESERVED

**Rice Chart 8. CBOT Rough Rice Futures Chart, January 2005, Volume and Open Interest (1, 1)**



Source: Chicago Board of Trade (CBOT®) [CBOT.com](http://CBOT.com)  
Copyright © Board of Trade of the City of Chicago, Inc. 2005 ALL RIGHTS RESERVED

# CBOT Soybeans Futures

## Open Auction


Exp	Last 1 Last 2	Net Chg	Open	High	Low	Close	Settle	Prev Settle	Hi/Lo Limit
06Jan 	559'0 13:19 559'4 13:19	-5'0	562'0 561'4 9:31	563'0 9:30	553'4 11:48	558'4 559'4 13:19	559'0	564'0	609'0 509'0
06Mar  	567'4 13:19 568'0 13:19	-3'4	568'0 569'0 9:32	570'0 9:31	561'6 11:48	567'0 568'0 13:19	567'4	571'0	617'4 517'4
06May 	571'2 13:18 571'4 13:18	-4'2	574'0 9:30	574'4 9:30	566'2 11:48	571'0 571'4 13:18	571'2	575'4	621'2 521'2
06Jul 	577'0 13:19 577'4 13:19	-4'2	579'4 579'0 9:30	579'4 9:30	572'0 11:48	576'4 577'4 13:19	577'0	581'2	627'0 527'0
06Aug 	581'0 13:20	-1'0	581'4 582'0 9:31	582'0 9:31	574'4 11:53	581'0 13:20	581'0	582'0	631'0 531'0
06Sep 	579'4 13:20 580'0 13:20	-3'4	581'4 9:33	581'4 9:33	577'0 11:46	579'0 580'0 13:20	579'4	583'0	629'4 529'4
06Nov 	584'0 13:20 585'0 13:20	-3'0	585'0 584'4 9:31	585'4 9:36	578'4 11:45	583'0 585'0 13:20	584'0	587'0	634'0 534'0
07Jan 	590'0 13:21	-2'0				590'0 13:21	590'0	592'0	640'0 540'0
07Mar  	592'0 13:21	-2'0				592'0 13:21	592'0	594'0	642'0 542'0
07Jul 	602'0 13:21	-2'0				602'0 13:21	602'0	604'0	652'0 552'0
07Nov 	598'0 13:21	-3'0	596'0 11:47	598'0 13:21	595'0 12:12	598'0 13:21	598'0	601'0	648'0 548'0

Table generated December 07, 2005 15:00 CST

= Chart  = Option

**Soybeans Chart 1. CBOT Soybeans Futures Chart, January 2005, Variable Moving Average (5, 10, 20)**



Source: Chicago Board of Trade (CBOT®) [CBOT.com](http://CBOT.com)  
 Copyright © Board of Trade of the City of Chicago, Inc. 2005 ALL RIGHTS RESERVED

**Soybeans Chart 2. CBOT Soybeans Futures Chart, January 2005, Parabolic Time/Price (20, 20, 200)**



Source: Chicago Board of Trade (CBOT®) [CBOT.com](http://CBOT.com)  
 Copyright © Board of Trade of the City of Chicago, Inc. 2005 ALL RIGHTS RESERVED

**Soybeans Chart 3. CBOT Soybeans Futures Chart, January 2005, Bollinger Bands (20, 200)**



Source: Chicago Board of Trade (CBOT®) [CBOT.com](http://CBOT.com)  
 Copyright © Board of Trade of the City of Chicago, Inc. 2005 ALL RIGHTS RESERVED

**Soybeans Chart 4. CBOT Soybeans Futures Chart, January 2005, Wilder's RSI (14)**



Source: Chicago Board of Trade (CBOT®) [CBOT.com](http://CBOT.com)  
 Copyright © Board of Trade of the City of Chicago, Inc. 2005 ALL RIGHTS RESERVED

**Soybeans Chart 5. CBOT Soybeans Futures Chart, January 2005, Slow Stochastic (14, 3, 3)**



Source: Chicago Board of Trade (CBOT®) [CBOT.com](http://CBOT.com)  
 Copyright © Board of Trade of the City of Chicago, Inc. 2005 ALL RIGHTS RESERVED

**Soybeans Chart 6. CBOT Soybeans Futures Chart, January 2005, Fast Stochastic (14, 3)**



Source: Chicago Board of Trade (CBOT®) [CBOT.com](http://CBOT.com)  
 Copyright © Board of Trade of the City of Chicago, Inc. 2005 ALL RIGHTS RESERVED

**Soybeans Chart 7. CBOT Soybeans Futures Chart, January 2005, Accumulative Distribution Index**



Source: Chicago Board of Trade (CBOT®) [CBOT.com](http://CBOT.com)  
 Copyright © Board of Trade of the City of Chicago, Inc. 2005 ALL RIGHTS RESERVED

**Soybeans Chart 8. CBOT Soybeans Futures Chart, January 2005, Volume and Open Interest (1, 1)**



Source: Chicago Board of Trade (CBOT®) [CBOT.com](http://CBOT.com)  
 Copyright © Board of Trade of the City of Chicago, Inc. 2005 ALL RIGHTS RESERVED

# CBOT Corn Futures

## Open Auction








Exp	Last 1 Last 2	Net Chg	Open	High	Low	Close	Settle	Prev Settle	Hi/Lo Limit
05Dec	187'0 13:18 186'6 13:18	-3'6	190'4 190'2 9:30	190'4 9:30	186'6 12:50	187'2 186'6 13:18	187'0	190'6	
06Mar 	201'0 13:18 200'4 13:18	-3'2	203'6 203'4 9:30	203'6 9:30	200'2 12:58	201'2 200'4 13:18	201'0	204'2	221'0 181'0
06May 	209'4 13:18 209'2 13:18	-3'4	212'2 212'4 9:30	212'4 9:30	209'2 12:58	209'6 209'2 13:18	209'4	213'0	229'4 189'4
06Jul 	218'2 13:18 218'0 13:18	-2'6	220'6 220'2 9:31	220'6 9:30	217'6 11:48	218'2 218'0 13:18	218'2	221'0	238'2 198'2
06Sep 	226'6 13:18	-2'6	228'4 228'0 9:35	228'4 9:34	226'4 11:52	226'6 13:18	226'6	229'4	246'6 206'6
06Dec 	238'2 13:18 238'2 13:18	-2'2	240'0 9:32	240'0 9:31	237'6 11:50	238'0 238'2 13:18	238'2	240'4	258'2 218'2
07Mar 	246'4 13:18	-2'0	247'2 247'4 9:36	247'4 9:36	246'0 11:39	246'4 13:18	246'4	248'4	266'4 226'4
07May 	250'4 13:19	-2'0	251'2 10:28	251'2 10:28	250'4 11:48	250'4 13:19	250'4	252'4	270'4 230'4
07Jul	255'2 13:19	-1'6	255'0 9:41	255'2 13:19	255'0 9:41	255'2 13:19	255'2	257'0	275'2 235'2
07Dec ---	255'4 13:19 255'4 13:19	-1'4	255'4 9:50	256'0 10:11	255'0 12:08	255'2 255'4 13:19	255'4	257'0	275'4 235'4

Table generated December 07, 2005 15:10 CST

= Chart  = Option

**Corn Chart 1. CBOT Corn Futures Chart, December 2005, Variable Moving Average (5, 10, 20)**



Source: Chicago Board of Trade (CBOT®) [CBOT.com](http://CBOT.com)  
 Copyright © Board of Trade of the City of Chicago, Inc. 2005 ALL RIGHTS RESERVED

**Corn Chart 2. CBOT Corn Futures Chart, December 2005, Parabolic Time/Price (20, 20, 200)**



Source: Chicago Board of Trade (CBOT®) [CBOT.com](http://CBOT.com)  
 Copyright © Board of Trade of the City of Chicago, Inc. 2005 ALL RIGHTS RESERVED

**Corn Chart 3. CBOT Corn Futures Chart, December 2005, Bollinger Bands (20, 200)**



Source: Chicago Board of Trade (CBOT®) [CBOT.com](http://CBOT.com)  
 Copyright © Board of Trade of the City of Chicago, Inc. 2005 ALL RIGHTS RESERVED

**Corn Chart 4. CBOT Corn Futures Chart, December 2005, Wilder's RSI (14)**



Source: Chicago Board of Trade (CBOT®) [CBOT.com](http://CBOT.com)  
 Copyright © Board of Trade of the City of Chicago, Inc. 2005 ALL RIGHTS RESERVED

**Corn Chart 5. CBOT Corn Futures Chart, December 2005, Slow Stochastic (14, 3, 3)**



Source: Chicago Board of Trade (CBOT®) [CBOT.com](http://CBOT.com)

Copyright © Board of Trade of the City of Chicago, Inc. 2005 ALL RIGHTS RESERVED

**Corn Chart 6. CBOT Corn Futures Chart, December 2005, Fast Stochastic (14, 3)**



Source: Chicago Board of Trade (CBOT®) [CBOT.com](http://CBOT.com)

Copyright © Board of Trade of the City of Chicago, Inc. 2005 ALL RIGHTS RESERVED

**Corn Chart 7. CBOT Corn Futures Chart, December 2005, Accumulative Distribution Index**



Source: Chicago Board of Trade (CBOT®) [CBOT.com](http://CBOT.com)  
 Copyright © Board of Trade of the City of Chicago, Inc. 2005 ALL RIGHTS RESERVED

**Corn Chart 8. CBOT Corn Futures Chart, December 2005, Volume and Open Interest (1, 1)**



Source: Chicago Board of Trade (CBOT®) [CBOT.com](http://CBOT.com)  
 Copyright © Board of Trade of the City of Chicago, Inc. 2005 ALL RIGHTS RESERVED

# CBOT Wheat Futures

## Open Auction

Exp	Last 1 Last 2	Net Chg	Open	High	Low	Close	Settle	Prev Settle	Hi/Lo Limit
05Dec	297'2 13:20	-2'4	297'0 9:36	297'4 10:27	295'0 11:35	297'2 13:20	297'2	299'6	
06Mar Ω	313'2 13:18 313'0 13:18	-2'4	313'4 313'0 9:31	314'0 9:30	310'4 11:30	313'4 313'0 13:18	313'2	315'6	343'2 283'2
06May Ω	322'0 13:18 321'6 13:18	-3'0	324'0 323'0 9:31	324'0 9:30	319'4 11:30	322'2 321'6 13:18	322'0	325'0	352'0 292'0
06Jul Ω	332'4 13:18 333'0 13:18	-1'0	332'0 331'4 9:31	333'0 13:14	328'6 11:32	332'0 333'0 13:18	332'4	333'4	362'4 302'4
06Sep Ω	341'0 13:18	-1'4	340'0 9:32	341'0 13:18	337'4 11:30	341'0 13:18	341'0	342'4	371'0 311'0
06Dec Ω	351'0 13:18 351'4 13:18	-2'2	351'0 9:32	352'0 13:13	348'4 11:35	350'4 351'4 13:18	351'0	353'2	381'0 321'0
07Mar Ω	359'4 13:18	-2'0				359'4 13:18	359'4	361'4	389'4 329'4
07Jul ---	362'0 13:18	-1'0				362'0 13:18	362'0	363'0	392'0 332'0

Table generated December 07, 2005 15:20 CST = Chart Ω = Option

## Wheat Chart 1. CBOT Wheat Futures Chart, July 2006, Variable Moving Average (5, 10, 20)



**Wheat Chart 2. CBOT Wheat Futures Chart, July 2006, Parabolic Time/Price (20, 20, 200)**



Source: Chicago Board of Trade (CBOT®) [CBOT.com](http://CBOT.com)  
 Copyright © Board of Trade of the City of Chicago, Inc. 2005 ALL RIGHTS RESERVED

**Wheat Chart 3. CBOT Wheat Futures Chart, July 2006, Bollinger Bands (20, 200)**



Source: Chicago Board of Trade (CBOT®) [CBOT.com](http://CBOT.com)  
 Copyright © Board of Trade of the City of Chicago, Inc. 2005 ALL RIGHTS RESERVED

**Wheat Chart 4. [CBOT Wheat Futures Chart, July 2006, Wilder's RSI \(14\)](#)**



Source: Chicago Board of Trade (CBOT®) [CBOT.com](#)  
 Copyright © Board of Trade of the City of Chicago, Inc. 2005 ALL RIGHTS RESERVED

**Wheat Chart 5. [CBOT Wheat Futures Chart, July 2006, Slow Stochastic \(14, 3, 3, 3\)](#)**



Source: Chicago Board of Trade (CBOT®) [CBOT.com](#)  
 Copyright © Board of Trade of the City of Chicago, Inc. 2005 ALL RIGHTS RESERVED

**Wheat Chart 6. CBOT Wheat Futures Chart, July 2006, Fast Stochastic (14, 3)**



Source: Chicago Board of Trade (CBOT®) [CBOT.com](http://CBOT.com)  
 Copyright © Board of Trade of the City of Chicago, Inc. 2005 ALL RIGHTS RESERVED

**Wheat Chart 7. CBOT Wheat Futures Chart, July 2006, Accumulative Distribution Index**



Source: Chicago Board of Trade (CBOT®) [CBOT.com](http://CBOT.com)  
 Copyright © Board of Trade of the City of Chicago, Inc. 2005 ALL RIGHTS RESERVED

**Wheat Chart 8. CBOT Wheat Futures Chart, July 2006, Volume and Open Interest (1, 1)**



Source: Chicago Board of Trade (CBOT®) [CBOT.com](http://CBOT.com)  
Copyright © Board of Trade of the City of Chicago, Inc. 2005 ALL RIGHTS RESERVED

The Arkansas Cooperative Extension Service offers its programs to all eligible persons regardless of race, color, national origin, religion, gender, age, disability, marital or veteran status, or any other legally protected status, and is an Equal Opportunity Employer.