

# Daily Grain and Soybean Charts

Rice, Soybeans, Corn and Wheat Charts Included

*Bobby Coats - Extension Agricultural Policy Analyst*

*December 21, 2005*

<http://www.aragriculture.org/agfoodpolicy/ricesitol/default.asp>

## CBOT Rough Rice Futures (RR)

Open Auction

Exp	Last 1 Last 2	Net Chg	Open	High	Low	Close	Settle	Prev Settle	Hi/Lo Limit
06Jan ☒	779'0 13:35	-7'0	782'0 9:19	782'0 9:18	777'0 13:27	779'0 13:35	779'0	786'0	829'0 729'0
06Mar ☒	805'0 13:35	-6'0	808'0 807'0 9:16	808'0 9:15	803'0 13:26	805'0 13:35	805'0	811'0	855'0 755'0
06May ☒	827'0 13:35	-9'0	831'0 12:14	831'0 12:14	827'0 13:29	827'0 13:35	827'0	836'0	877'0 777'0
06Jul ☒	851'0 13:35	-6'0				851'0 13:35	851'0	857'0	901'0 801'0
06Sep ☒	863'0 13:35	Unch				863'0 13:35	863'0	863'0	913'0 813'0
06Nov ☒	868'0 13:35	Unch				868'0 13:35	868'0	868'0	918'0 818'0
07Jan ☒	878'0 13:35	Unch				878'0 13:35	878'0	878'0	928'0 828'0

Table generated December 21, 2005 14:40 CST = Chart ☒ = Option

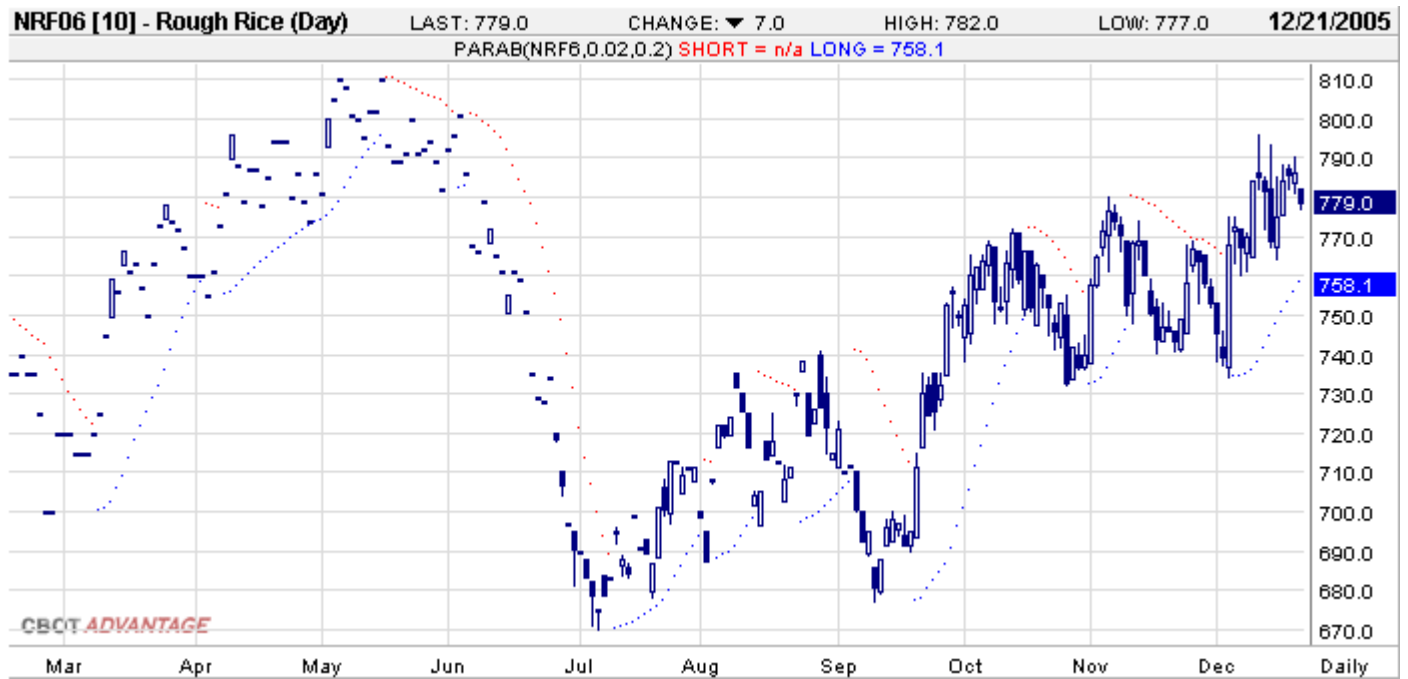
**Rice Chart 1. CBOT Rough Rice Futures Chart, January 2005, Variable Moving Average (5, 10, 20)**



Source: Chicago Board of Trade (CBOT®) [CBOT.com](http://CBOT.com)

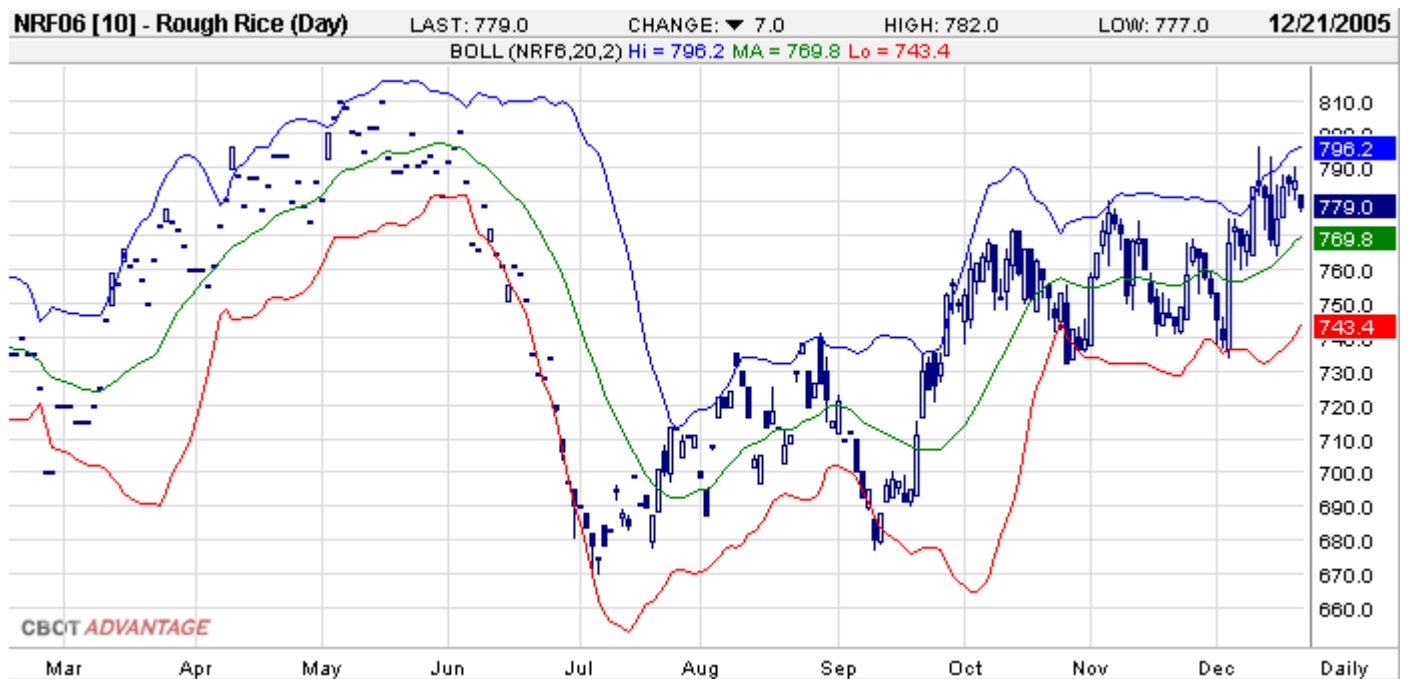
Copyright © Board of Trade of the City of Chicago, Inc. 2005 ALL RIGHTS RESERVED

**Rice Chart 2. CBOT Rough Rice Futures Chart, January 2005, Parabolic Time/Price (20, 20, 200)**



Source: Chicago Board of Trade (CBOT®) [CBOT.com](http://CBOT.com)  
 Copyright © Board of Trade of the City of Chicago, Inc. 2005 ALL RIGHTS RESERVED

**Rice Chart 3. CBOT Rough Rice Futures Chart, January 2005, Bollinger Bands (20, 200)**



Source: Chicago Board of Trade (CBOT®) [CBOT.com](http://CBOT.com)  
 Copyright © Board of Trade of the City of Chicago, Inc. 2005 ALL RIGHTS RESERVED

**Rice Chart 4. CBOT Rough Rice Futures Chart, January 2005, Wilder's RSI (14)**



Source: Chicago Board of Trade (CBOT®) [CBOT.com](http://CBOT.com)  
 Copyright © Board of Trade of the City of Chicago, Inc. 2005 ALL RIGHTS RESERVED

**Rice Chart 5. CBOT Rough Rice Futures Chart, January 2005, Slow Stochastic (14, 3, 3, 3)**



Source: Chicago Board of Trade (CBOT®) [CBOT.com](http://CBOT.com)  
 Copyright © Board of Trade of the City of Chicago, Inc. 2005 ALL RIGHTS RESERVED

**Rice Chart 6. CBOT Rough Rice Futures Chart, January 2005, Fast Stochastic (14, 3)**



Source: Chicago Board of Trade (CBOT®) [CBOT.com](http://CBOT.com)

Copyright © Board of Trade of the City of Chicago, Inc. 2005 ALL RIGHTS RESERVED

**Rice Chart 7. CBOT Rough Rice Futures Chart, January 2005, Accumulative Distribution Index**



Source: Chicago Board of Trade (CBOT®) [CBOT.com](http://CBOT.com)

Copyright © Board of Trade of the City of Chicago, Inc. 2005 ALL RIGHTS RESERVED

**Rice Chart 8. CBOT Rough Rice Futures Chart, January 2005, Volume and Open Interest (1, 1)**



Source: Chicago Board of Trade (CBOT®) [CBOT.com](http://CBOT.com)  
Copyright © Board of Trade of the City of Chicago, Inc. 2005 ALL RIGHTS RESERVED

# CBOT Soybeans Futures

## Open Auction

Exp	Last 1 Last 2	Net Chg	Open	High	Low	Close	Settle	Prev Settle	Hi/Lo Limit
06Jan ☒	606'4 13:20 606'0 13:20	+1'2	604'0 602'0 9:33	607'0 12:51	597'4 9:57	607'0 606'0 13:20	606'4	605'2	656'4 556'4
06Mar --- ☒	619'0 13:19 618'0 13:19	+2'4	616'0 614'0 9:37	620'0 13:14	609'0 9:57	620'0 618'0 13:19	619'0	616'4	669'0 569'0
06May ☒	627'0 13:16 627'4 13:16	+1'0	622'0 623'0 9:30	627'4 12:50	618'4 9:57	626'4 627'4 13:16	627'0	626'0	677'0 577'0
06Jul ☒	633'4 13:17 634'0 13:17	+1'0	630'0 631'0 9:30	634'0 12:52	625'0 9:58	633'0 634'0 13:17	633'4	632'4	683'4 583'4
06Aug ☒	634'0 13:17	+2'0	631'0 9:41	634'0 13:17	629'0 9:53	634'0 13:17	634'0	632'0	684'0 584'0
06Sep ☒	629'0 13:18	Unch	628'0 9:42	629'0 12:39	628'0 9:42	629'0 13:18	629'0	629'0	679'0 579'0
06Nov ☒	633'4 13:18 634'0 13:18	-0'6	631'0 632'0 9:31	634'0 13:14	627'0 9:57	633'0 634'0 13:18	633'4	634'2	683'4 583'4
07Jan ☒	635'0 13:18	-2'0	633'0 9:44	635'0 12:29	629'0 10:00	635'0 13:18	635'0	637'0	685'0 585'0
07Mar ☒	638'0 13:18	-1'0	635'0 9:45	638'0 13:18	634'0 11:22	638'0 13:18	638'0	639'0	688'0 588'0
07May --- ☒	635'0 13:18	Unch				635'0 13:18	635'0	635'0	685'0 585'0
07Jul ☒	641'0 13:18	+1'0				641'0 13:18	641'0	640'0	691'0 591'0
07Nov ☒	638'0 13:18	-1'0	635'0 634'0 9:56	638'0 13:14	633'0 9:58	638'0 13:18	638'0	639'0	688'0 588'0

Table generated December 21, 2005 14:40 CST

= Chart ☒ = Option

**Soybeans Chart 1. CBOT Soybeans Futures Chart, January 2005, Variable Moving Average (5, 10, 20)**



Source: Chicago Board of Trade (CBOT®) [CBOT.com](http://CBOT.com)  
 Copyright © Board of Trade of the City of Chicago, Inc. 2005 ALL RIGHTS RESERVED

**Soybeans Chart 2. CBOT Soybeans Futures Chart, January 2005, Parabolic Time/Price (20, 20, 200)**



Source: Chicago Board of Trade (CBOT®) [CBOT.com](http://CBOT.com)  
 Copyright © Board of Trade of the City of Chicago, Inc. 2005 ALL RIGHTS RESERVED

**Soybeans Chart 3. CBOT Soybeans Futures Chart, January 2005, Bollinger Bands (20, 200)**



Source: Chicago Board of Trade (CBOT®) [CBOT.com](http://CBOT.com)  
 Copyright © Board of Trade of the City of Chicago, Inc. 2005 ALL RIGHTS RESERVED

**Soybeans Chart 4. CBOT Soybeans Futures Chart, January 2005, Wilder's RSI (14)**



Source: Chicago Board of Trade (CBOT®) [CBOT.com](http://CBOT.com)  
 Copyright © Board of Trade of the City of Chicago, Inc. 2005 ALL RIGHTS RESERVED

**Soybeans Chart 5. [CBOT Soybeans Futures Chart, January 2005, Slow Stochastic \(14, 3, 3\)](#)**



Source: Chicago Board of Trade (CBOT®) [CBOT.com](#)  
 Copyright © Board of Trade of the City of Chicago, Inc. 2005 ALL RIGHTS RESERVED

**Soybeans Chart 6. [CBOT Soybeans Futures Chart, January 2005, Fast Stochastic \(14, 3\)](#)**



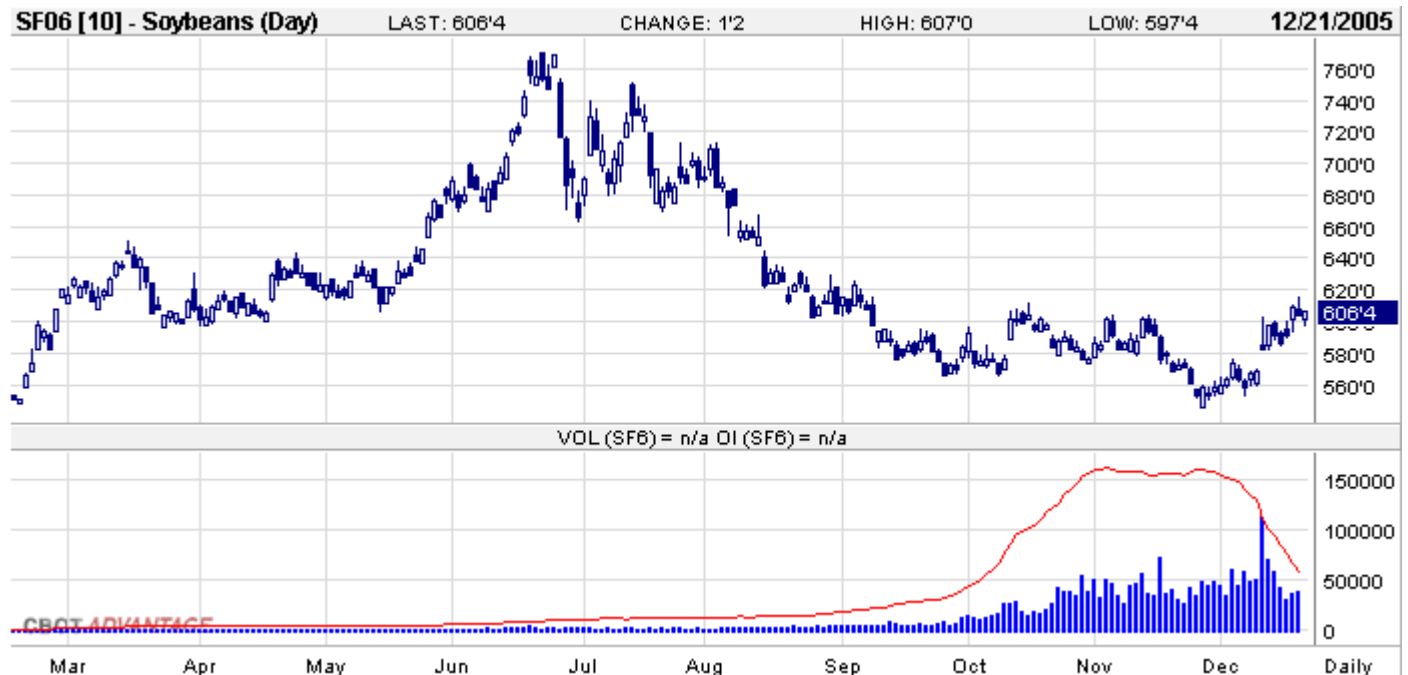
Source: Chicago Board of Trade (CBOT®) [CBOT.com](#)  
 Copyright © Board of Trade of the City of Chicago, Inc. 2005 ALL RIGHTS RESERVED

**Soybeans Chart 7. CBOT Soybeans Futures Chart, January 2005, Accumulative Distribution Index**



Source: Chicago Board of Trade (CBOT®) [CBOT.com](http://CBOT.com)  
 Copyright © Board of Trade of the City of Chicago, Inc. 2005 ALL RIGHTS RESERVED

**Soybeans Chart 8. CBOT Soybeans Futures Chart, January 2005, Volume and Open Interest (1, 1)**



Source: Chicago Board of Trade (CBOT®) [CBOT.com](http://CBOT.com)  
 Copyright © Board of Trade of the City of Chicago, Inc. 2005 ALL RIGHTS RESERVED

# CBOT Corn Futures

## Open Auction

Exp	Last 1 Last 2	Net Chg	Open	High	Low	Close	Settle	Prev Settle	Hi/Lo Limit
06Mar ☐	210'0 13:18 210'2 13:18	+0'2	208'6 208'4 9:30	210'2 13:14	207'6 9:54	209'6 210'2 13:18	210'0	209'6	230'0 190'0
06May ☐	219'0 13:18 219'2 13:18	+0'2	217'2 217'4 9:31	219'2 13:14	216'6 9:57	218'6 219'2 13:18	219'0	218'6	239'0 199'0
06Jul ☐	227'6 13:19 228'0 13:19	+0'4	226'2 226'0 9:30	228'0 13:15	225'4 9:57	227'4 228'0 13:19	227'6	227'2	247'6 207'6
06Sep ☐	235'6 13:19 236'0 13:19	Unch	234'4 9:35	236'0 12:47	234'2 9:53	235'6 236'0 13:19	235'6	235'6	255'6 215'6
06Dec ☐	246'0 13:19 246'2 13:19	-0'2	245'0 245'2 9:31	246'2 13:14	244'6 9:54	245'6 246'2 13:19	246'0	246'2	266'0 226'0
07Mar ☐	254'0 13:19 254'4 13:19	+0'2	252'4 9:35	254'4 13:19	252'0 9:55	253'6 254'4 13:19	254'0	253'6	274'0 234'0
07May ☐	256'0 13:19 256'4 13:19	-0'4	255'0 10:12	256'4 13:19	255'0 10:08	255'4 256'4 13:19	256'0	256'4	276'0 236'0
07Jul	260'0 13:19	+0'4	258'4 9:48	260'0 13:19	258'0 10:12	260'0 13:19	260'0	259'4	280'0 240'0
07Sep	259'0 13:20	Unch	259'0 258'4 9:46	259'0 9:46	258'4 9:46	259'0 13:20	259'0	259'0	279'0 239'0
07Dec ----	260'0 13:20 259'6 13:20	Unch	259'0 9:37	260'0 10:13	259'0 9:34	260'0 259'6 13:20	260'0	260'0	280'0 240'0
08Jul	263'0 B 9:41 263'0 B 9:41	Unch							
08Dec	260'4 13:20	+0'4	260'0 260'4 9:34	261'0 10:33	260'0 9:33	260'4 13:20	260'4	260'0	280'4 240'4

Table generated December 21, 2005 14:50 CST

= Chart ☐ = Option

**Corn Chart 1. CBOT Corn Futures Chart, March 2005, Variable Moving Average (5, 10, 20)**



Source: Chicago Board of Trade (CBOT®) [CBOT.com](http://CBOT.com)  
 Copyright © Board of Trade of the City of Chicago, Inc. 2005 ALL RIGHTS RESERVED

**Corn Chart 2. CBOT Corn Futures Chart, March 2005, Parabolic Time/Price (20, 20, 200)**



Source: Chicago Board of Trade (CBOT®) [CBOT.com](http://CBOT.com)  
 Copyright © Board of Trade of the City of Chicago, Inc. 2005 ALL RIGHTS RESERVED

### Corn Chart 3. CBOT Corn Futures Chart, March 2005, Bollinger Bands (20, 200)



Source: Chicago Board of Trade (CBOT®) [CBOT.com](http://CBOT.com)  
 Copyright © Board of Trade of the City of Chicago, Inc. 2005 ALL RIGHTS RESERVED

### Corn Chart 4. CBOT Corn Futures Chart, March 2005, Wilder's RSI (14)



Source: Chicago Board of Trade (CBOT®) [CBOT.com](http://CBOT.com)  
 Copyright © Board of Trade of the City of Chicago, Inc. 2005 ALL RIGHTS RESERVED

**Corn Chart 5. [CBOT Corn Futures Chart, March 2005, Slow Stochastic \(14, 3, 3\)](#)**



Source: Chicago Board of Trade (CBOT®) [CBOT.com](http://CBOT.com)

Copyright © Board of Trade of the City of Chicago, Inc. 2005 ALL RIGHTS RESERVED

**Corn Chart 6. [CBOT Corn Futures Chart, March 2005, Fast Stochastic \(14, 3\)](#)**



Source: Chicago Board of Trade (CBOT®) [CBOT.com](http://CBOT.com)

Copyright © Board of Trade of the City of Chicago, Inc. 2005 ALL RIGHTS RESERVED

## Corn Chart 7. CBOT Corn Futures Chart, March 2005, Accumulative Distribution Index



Source: Chicago Board of Trade (CBOT®) [CBOT.com](http://CBOT.com)  
 Copyright © Board of Trade of the City of Chicago, Inc. 2005 ALL RIGHTS RESERVED

## Corn Chart 8. CBOT Corn Futures Chart, March 2005, Volume and Open Interest (1, 1)



Source: Chicago Board of Trade (CBOT®) [CBOT.com](http://CBOT.com)  
 Copyright © Board of Trade of the City of Chicago, Inc. 2005 ALL RIGHTS RESERVED

# CBOT Wheat Futures

## Open Auction

Exp	Last 1 Last 2	Net Chg	Open	High	Low	Close	Settle	Prev Settle	Hi/Lo Limit
06Mar ☒	327'4 13:22 327'6 13:22	-0'4	326'4 327'0 9:31	328'4 12:51	324'6 10:35	327'2 327'6 13:22	327'4	328'0	357'4 297'4
06May ☒	337'0 13:21	-0'2	335'4 336'0 9:31	337'4 12:49	334'2 10:35	337'0 13:21	337'0	337'2	367'0 307'0
06Jul ☒	347'4 13:21 347'0 13:21	+0'6	345'0 346'0 9:31	348'0 13:14	343'4 10:35	348'0 347'0 13:21	347'4	346'6	377'4 317'4
06Sep ☒	354'4 13:22 355'0 13:22	-1'2	353'4 9:36	355'0 13:14	352'0 9:59	354'0 355'0 13:22	354'4	355'6	384'4 324'4
06Dec ☒	363'6 13:22 363'4 13:22	-2'0	364'4 9:31	365'6 12:49	363'0 10:29	364'0 363'4 13:22	363'6	365'6	393'6 333'6
07Mar ☒	371'0 13:22	-2'0	371'4 9:36	372'0 9:43	370'0 10:36	371'0 13:22	371'0	373'0	401'0 341'0
07Jul	374'0 13:22	-1'4	373'4 9:31	374'0 9:43	370'0 10:36	374'0 13:22	374'0	375'4	404'0 344'0

Table generated December 21, 2005 14:50 CST = Chart ☒ = Option

## Wheat Chart 1. CBOT Wheat Futures Chart, July 2006, Variable Moving Average (5, 10, 20)



Source: Chicago Board of Trade (CBOT®) [CBOT.com](http://CBOT.com)

Copyright © Board of Trade of the City of Chicago, Inc. 2005 ALL RIGHTS RESERVED

**Wheat Chart 2. CBOT Wheat Futures Chart, July 2006, Parabolic Time/Price (20, 20, 200)**



Source: Chicago Board of Trade (CBOT®) [CBOT.com](http://CBOT.com)  
 Copyright © Board of Trade of the City of Chicago, Inc. 2005 ALL RIGHTS RESERVED

**Wheat Chart 3. CBOT Wheat Futures Chart, July 2006, Bollinger Bands (20, 200)**



Source: Chicago Board of Trade (CBOT®) [CBOT.com](http://CBOT.com)  
 Copyright © Board of Trade of the City of Chicago, Inc. 2005 ALL RIGHTS RESERVED

**Wheat Chart 4. CBOT Wheat Futures Chart, July 2006, Wilder's RSI (14)**



Source: Chicago Board of Trade (CBOT®) [CBOT.com](http://CBOT.com)  
 Copyright © Board of Trade of the City of Chicago, Inc. 2005 ALL RIGHTS RESERVED

**Wheat Chart 5. CBOT Wheat Futures Chart, July 2006, Slow Stochastic (14, 3, 3, 3)**



Source: Chicago Board of Trade (CBOT®) [CBOT.com](http://CBOT.com)  
 Copyright © Board of Trade of the City of Chicago, Inc. 2005 ALL RIGHTS RESERVED

## Wheat Chart 6. CBOT Wheat Futures Chart, July 2006, Fast Stochastic (14, 3)



Source: Chicago Board of Trade (CBOT®) [CBOT.com](http://CBOT.com)

Copyright © Board of Trade of the City of Chicago, Inc. 2005 ALL RIGHTS RESERVED

## Wheat Chart 7. CBOT Wheat Futures Chart, July 2006, Accumulative Distribution Index



Source: Chicago Board of Trade (CBOT®) [CBOT.com](http://CBOT.com)

Copyright © Board of Trade of the City of Chicago, Inc. 2005 ALL RIGHTS RESERVED

**Wheat Chart 8. CBOT Wheat Futures Chart, July 2006, Volume and Open Interest (1, 1)**



Source: Chicago Board of Trade (CBOT®) [CBOT.com](http://CBOT.com)  
Copyright © Board of Trade of the City of Chicago, Inc. 2005 ALL RIGHTS RESERVED

The Arkansas Cooperative Extension Service offers its programs to all eligible persons regardless of race, color, national origin, religion, gender, age, disability, marital or veteran status, or any other legally protected status, and is an Equal Opportunity Employer.