

# Daily Grain and Soybean Charts

## Rice, Soybeans, Corn and Wheat Charts Included

*Bobby Coats - Extension Agricultural Policy Analyst*  
 December 20, 2005

<http://www.aragriculture.org/agfoodpolicy/ricesitol/default.asp>

### CBOT Rough Rice Futures (RR)

Open Auction

Exp	Last 1 Last 2	Net Chg	Open	High	Low	Close	Settle	Prev Settle	Hi/Lo Limit
06Jan ☒	786'0 13:32	Unch	785'0 783'0 9:17	790'0 12:05	781'0 9:20	786'0 13:32	786'0	786'0	836'0 736'0
06Mar ☒	811'0 13:32 812'0 13:32	-2'0	810'0 809'0 9:16	817'0 12:11	806'0 9:26	810'0 812'0 13:32	811'0	813'0	861'0 761'0
06May ☒	836'0 13:32	+1'0	832'0 11:05	838'0 12:17	832'0 11:05	836'0 13:32	836'0	835'0	886'0 786'0
06Jul ☒	857'0 13:32	+1'0				857'0 13:32	857'0	856'0	907'0 807'0
06Sep ☒	863'0 13:32	Unch				863'0 13:32	863'0	863'0	913'0 813'0
06Nov ☒	868'0 13:32	Unch				868'0 13:32	868'0	868'0	918'0 818'0
07Jan ☒	878'0 13:32	-2'0				878'0 13:32	878'0	880'0	928'0 828'0

Table generated December 20, 2005 15:00 CST = Chart ☒ = Option

### Rice Chart 1. CBOT Rough Rice Futures Chart, January 2005, Variable Moving Average (5, 10, 20)



Source: Chicago Board of Trade (CBOT®) [CBOT.com](http://CBOT.com)

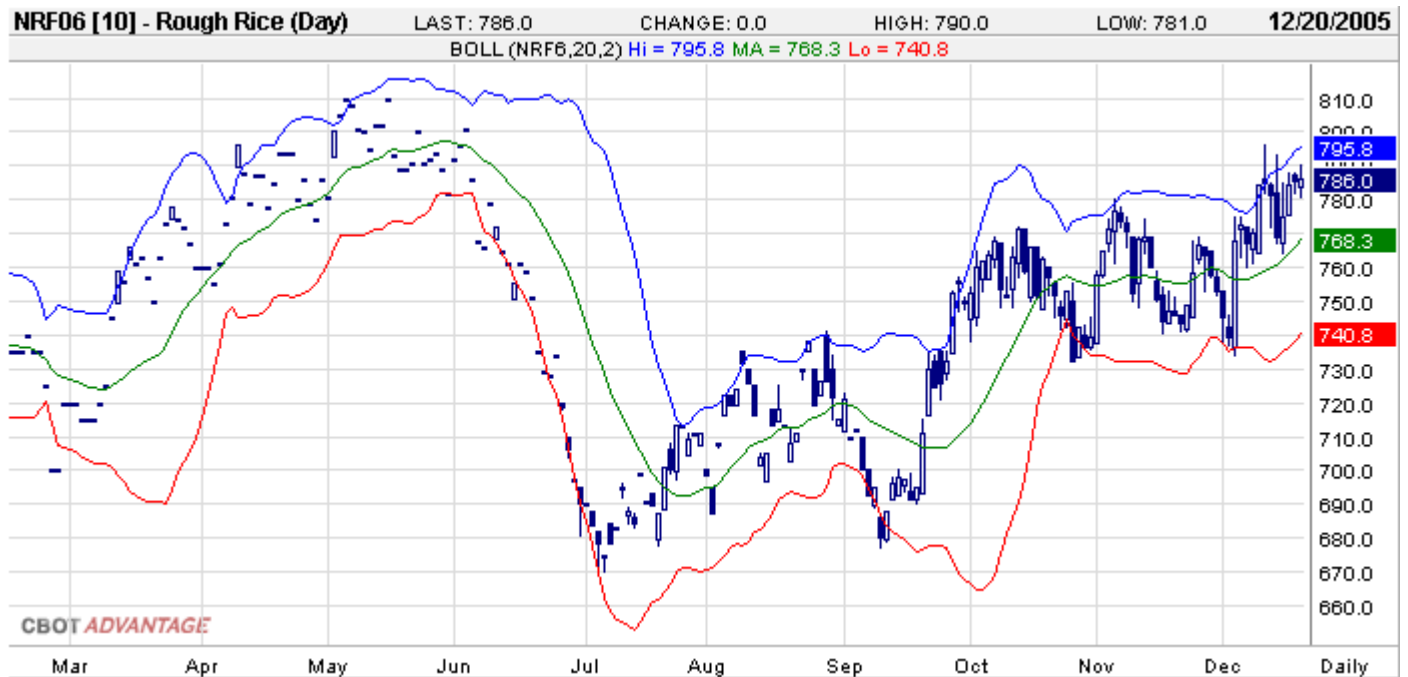
Copyright © Board of Trade of the City of Chicago, Inc. 2005 ALL RIGHTS RESERVED

**Rice Chart 2. CBOT Rough Rice Futures Chart, January 2005, Parabolic Time/Price (20, 20, 200)**



Source: Chicago Board of Trade (CBOT®) [CBOT.com](http://CBOT.com)  
 Copyright © Board of Trade of the City of Chicago, Inc. 2005 ALL RIGHTS RESERVED

**Rice Chart 3. CBOT Rough Rice Futures Chart, January 2005, Bollinger Bands (20, 200)**



Source: Chicago Board of Trade (CBOT®) [CBOT.com](http://CBOT.com)  
 Copyright © Board of Trade of the City of Chicago, Inc. 2005 ALL RIGHTS RESERVED

**Rice Chart 4. CBOT Rough Rice Futures Chart, January 2005, Wilder's RSI (14)**



Source: Chicago Board of Trade (CBOT®) [CBOT.com](http://CBOT.com)  
 Copyright © Board of Trade of the City of Chicago, Inc. 2005 ALL RIGHTS RESERVED

**Rice Chart 5. CBOT Rough Rice Futures Chart, January 2005, Slow Stochastic (14, 3, 3)**



Source: Chicago Board of Trade (CBOT®) [CBOT.com](http://CBOT.com)  
 Copyright © Board of Trade of the City of Chicago, Inc. 2005 ALL RIGHTS RESERVED

**Rice Chart 6. CBOT Rough Rice Futures Chart, January 2005, Fast Stochastic (14, 3)**



Source: Chicago Board of Trade (CBOT®) [CBOT.com](http://CBOT.com)

Copyright © Board of Trade of the City of Chicago, Inc. 2005 ALL RIGHTS RESERVED

**Rice Chart 7. CBOT Rough Rice Futures Chart, January 2005, Accumulative Distribution Index**



Source: Chicago Board of Trade (CBOT®) [CBOT.com](http://CBOT.com)

Copyright © Board of Trade of the City of Chicago, Inc. 2005 ALL RIGHTS RESERVED

**Rice Chart 8. CBOT Rough Rice Futures Chart, January 2005, Volume and Open Interest (1, 1)**



Source: Chicago Board of Trade (CBOT®) [CBOT.com](http://CBOT.com)

Copyright © Board of Trade of the City of Chicago, Inc. 2005 ALL RIGHTS RESERVED

# CBOT Soybeans Futures

## Open Auction

Exp	Last 1 Last 2	Net Chg	Open	High	Low	Close	Settle	Prev Settle	Hi/Lo Limit
06Jan 	605'2 13:17 604'2 13:17	-3'2	608'0 607'4 9:33	615'0 9:51	604'2 13:13	606'0 604'2 13:17	605'2	608'4	655'2 555'2
06Mar 	616'4 13:16 615'4 13:16	-4'0	620'0 619'0 9:32	627'4 9:51	615'4 13:12	617'4 615'4 13:16	616'4	620'4	666'4 566'4
06May 	626'0 13:17 625'0 13:17	-2'2	627'0 9:31	635'0 9:51	625'0 13:11	627'0 625'0 13:17	626'0	628'2	676'0 576'0
06Jul 	632'4 13:21 633'0 13:21	-2'0	635'0 634'4 9:32	641'0 9:51	631'4 13:13	632'0 633'0 13:21	632'4	634'4	682'4 582'4
06Aug 	632'0 13:21	+3'0	636'0 637'0 10:06	640'0 11:36	632'0 13:15	632'0 13:21	632'0	629'0	682'0 582'0
06Sep 	629'0 13:21	-0'4	637'0 638'0 10:01	638'0 10:01	629'0 13:21	629'0 13:21	629'0	629'4	679'0 579'0
06Nov 	634'2 13:21 635'0 13:21	-4'0	637'0 638'0 9:34	641'0 9:51	632'0 13:12	633'4 635'0 13:21	634'2	638'2	684'2 584'2
07Jan 	637'0 13:22 638'0 13:22	-1'0	638'0 10:08	643'0 11:31	636'0 13:09	636'0 638'0 13:22	637'0	638'0	687'0 587'0
07Mar 	639'0 13:22	-1'0	643'0 10:20	643'0 10:20	639'0 13:12	639'0 13:22	639'0	640'0	689'0 589'0
07May	635'0 13:22	Unch				635'0 13:22	635'0	635'0	685'0 585'0
07Jul	640'0 13:22	-5'0	648'0 10:51	648'0 10:51	640'0 13:12	640'0 13:22	640'0	645'0	690'0 590'0
07Nov 	639'0 13:22	-3'0	642'0 10:17	643'0 10:56	638'0 13:06	639'0 13:22	639'0	642'0	689'0 589'0

Table generated December 20, 2005 15:00 CST

= Chart  = Option

**Soybeans Chart 1. CBOT Soybeans Futures Chart, January 2005, Variable Moving Average (5, 10, 20)**



Source: Chicago Board of Trade (CBOT®) [CBOT.com](http://CBOT.com)  
 Copyright © Board of Trade of the City of Chicago, Inc. 2005 ALL RIGHTS RESERVED

**Soybeans Chart 2. CBOT Soybeans Futures Chart, January 2005, Parabolic Time/Price (20, 20, 200)**



Source: Chicago Board of Trade (CBOT®) [CBOT.com](http://CBOT.com)  
 Copyright © Board of Trade of the City of Chicago, Inc. 2005 ALL RIGHTS RESERVED

**Soybeans Chart 3. CBOT Soybeans Futures Chart, January 2005, Bollinger Bands (20, 200)**



Source: Chicago Board of Trade (CBOT®) [CBOT.com](http://CBOT.com)  
 Copyright © Board of Trade of the City of Chicago, Inc. 2005 ALL RIGHTS RESERVED

**Soybeans Chart 4. CBOT Soybeans Futures Chart, January 2005, Wilder's RSI (14)**



Source: Chicago Board of Trade (CBOT®) [CBOT.com](http://CBOT.com)  
 Copyright © Board of Trade of the City of Chicago, Inc. 2005 ALL RIGHTS RESERVED

**Soybeans Chart 5. [CBOT Soybeans Futures Chart, January 2005, Slow Stochastic \(14, 3, 3\)](#)**



Source: Chicago Board of Trade (CBOT®) [CBOT.com](http://CBOT.com)  
 Copyright © Board of Trade of the City of Chicago, Inc. 2005 ALL RIGHTS RESERVED

**Soybeans Chart 6. [CBOT Soybeans Futures Chart, January 2005, Fast Stochastic \(14, 3\)](#)**



Source: Chicago Board of Trade (CBOT®) [CBOT.com](http://CBOT.com)  
 Copyright © Board of Trade of the City of Chicago, Inc. 2005 ALL RIGHTS RESERVED

**Soybeans Chart 7. CBOT Soybeans Futures Chart, January 2005, Accumulative Distribution Index**



Source: Chicago Board of Trade (CBOT®) [CBOT.com](http://CBOT.com)  
 Copyright © Board of Trade of the City of Chicago, Inc. 2005 ALL RIGHTS RESERVED

**Soybeans Chart 8. CBOT Soybeans Futures Chart, January 2005, Volume and Open Interest (1, 1)**



Source: Chicago Board of Trade (CBOT®) [CBOT.com](http://CBOT.com)  
 Copyright © Board of Trade of the City of Chicago, Inc. 2005 ALL RIGHTS RESERVED

# CBOT Corn Futures

## Open Auction

Exp	Last 1 Last 2	Net Chg	Open	High	Low	Close	Settle	Prev Settle	Hi/Lo Limit
06Mar ☒	209'6 13:19 209'4 13:19	+1'0	208'6 208'2 9:30	212'0 9:48	208'2 9:30	210'0 209'4 13:19	209'6	208'6	229'6 189'6
06May ☒	218'6 13:20 219'0 13:20	+1'0	217'6 217'4 9:30	220'4 9:48	217'4 9:30	218'6 219'0 13:20	218'6	217'6	238'6 198'6
06Jul ☒	227'2 13:19 227'2 13:19	+0'4	226'4 226'6 9:31	229'2 9:48	226'2 9:30	227'4 227'2 13:19	227'2	226'6	247'2 207'2
06Sep ☒	235'6 13:20 236'0 13:20	+0'6	235'0 235'4 9:36	237'4 9:49	235'0 9:35	235'4 236'0 13:20	235'6	235'0	255'6 215'6
06Dec ☒	246'2 13:20 246'4 13:20	+0'6	245'2 245'4 9:31	248'0 9:49	245'2 9:30	246'2 246'4 13:20	246'2	245'4	266'2 226'2
07Mar ☒	253'6 13:20	+0'6	252'4 9:34	254'4 10:01	252'4 9:32	253'6 13:20	253'6	253'0	273'6 233'6
07May ☒	256'4 13:20	+0'4	256'4 12:46	256'4 12:45	256'4 12:45	256'4 13:20	256'4	256'0	276'4 236'4
07Jul	259'4 13:20	Unch	258'4 9:39	259'4 11:41	258'4 9:35	259'4 13:20	259'4	259'4	279'4 239'4
07Sep	259'0 13:20	+0'4				259'0 13:20	259'0	258'4	279'0 239'0
07Dec	260'0 13:21	+0'4	258'4 259'0 9:35	260'0 9:52	258'4 9:32	260'0 13:21	260'0	259'4	280'0 240'0
08Dec	260'0 13:21	Unch	260'0 13:16	260'0 13:15	260'0 13:15	260'0 13:21	260'0	260'0	280'0 240'0

Table generated December 20, 2005 15:10 CST = Chart ☒ = Option

**Corn Chart 1. CBOT Corn Futures Chart, March 2005, Variable Moving Average (5, 10, 20)**



Source: Chicago Board of Trade (CBOT®) [CBOT.com](http://CBOT.com)  
 Copyright © Board of Trade of the City of Chicago, Inc. 2005 ALL RIGHTS RESERVED

**Corn Chart 2. CBOT Corn Futures Chart, March 2005, Parabolic Time/Price (20, 20, 200)**



Source: Chicago Board of Trade (CBOT®) [CBOT.com](http://CBOT.com)  
 Copyright © Board of Trade of the City of Chicago, Inc. 2005 ALL RIGHTS RESERVED

### Corn Chart 3. CBOT Corn Futures Chart, March 2005, Bollinger Bands (20, 200)



Source: Chicago Board of Trade (CBOT®) [CBOT.com](http://CBOT.com)  
 Copyright © Board of Trade of the City of Chicago, Inc. 2005 ALL RIGHTS RESERVED

### Corn Chart 4. CBOT Corn Futures Chart, March 2005, Wilder's RSI (14)



Source: Chicago Board of Trade (CBOT®) [CBOT.com](http://CBOT.com)  
 Copyright © Board of Trade of the City of Chicago, Inc. 2005 ALL RIGHTS RESERVED

**Corn Chart 5. CBOT Corn Futures Chart, March 2005, Slow Stochastic (14, 3, 3)**



Source: Chicago Board of Trade (CBOT®) [CBOT.com](http://CBOT.com)  
 Copyright © Board of Trade of the City of Chicago, Inc. 2005 ALL RIGHTS RESERVED

**Corn Chart 6. CBOT Corn Futures Chart, March 2005, Fast Stochastic (14, 3)**



Source: Chicago Board of Trade (CBOT®) [CBOT.com](http://CBOT.com)  
 Copyright © Board of Trade of the City of Chicago, Inc. 2005 ALL RIGHTS RESERVED

## Corn Chart 7. CBOT Corn Futures Chart, March 2005, Accumulative Distribution Index



Source: Chicago Board of Trade (CBOT®) [CBOT.com](http://CBOT.com)  
 Copyright © Board of Trade of the City of Chicago, Inc. 2005 ALL RIGHTS RESERVED

## Corn Chart 8. CBOT Corn Futures Chart, March 2005, Volume and Open Interest (1, 1)



Source: Chicago Board of Trade (CBOT®) [CBOT.com](http://CBOT.com)  
 Copyright © Board of Trade of the City of Chicago, Inc. 2005 ALL RIGHTS RESERVED

# CBOT Wheat Futures

## Open Auction

Exp	Last 1 Last 2	Net Chg	Open	High	Low	Close	Settle	Prev Settle	Hi/Lo Limit
06Mar ☒	328'0 13:19 328'4 13:19	+4'6	325'4 325'0 9:30	329'0 9:55	324'0 9:31	327'4 328'4 13:19	328'0	323'2	358'0 298'0
06May ☒	337'2 13:20 337'4 13:20	+5'2	335'4 334'4 9:33	338'2 11:57	334'0 9:37	337'0 337'4 13:20	337'2	332'0	367'2 307'2
06Jul ☒	346'6 13:19 346'4 13:19	+5'0	344'0 343'0 9:31	347'4 9:53	343'0 9:30	347'0 346'4 13:19	346'6	341'6	376'6 316'6
06Sep ☒	355'6 13:18	+5'4	352'0 9:33	355'6 13:18	351'4 9:35	355'6 13:18	355'6	350'2	385'6 325'6
06Dec ☒	365'6 13:19 365'0 13:19	+5'0	364'4 363'4 9:32	367'4 9:55	362'4 9:35	366'4 365'0 13:19	365'6	360'6	395'6 335'6
07Mar ☒	373'0 13:19	+4'4	371'4 371'0 9:49	373'4 12:30	371'0 9:49	373'0 13:19	373'0	368'4	403'0 343'0
07Jul	375'4 13:19	+4'4	371'0 9:40	376'0 9:56	371'0 9:40	375'4 13:19	375'4	371'0	405'4 345'4

Table generated December 20, 2005 15:10 CST = Chart ☒ = Option

## Wheat Chart 1. CBOT Wheat Futures Chart, July 2006, Variable Moving Average (5, 10, 20)



Source: Chicago Board of Trade (CBOT®) [CBOT.com](http://CBOT.com)

Copyright © Board of Trade of the City of Chicago, Inc. 2005 ALL RIGHTS RESERVED

**Wheat Chart 2. CBOT Wheat Futures Chart, July 2006, Parabolic Time/Price (20, 20, 200)**



Source: Chicago Board of Trade (CBOT®) [CBOT.com](http://CBOT.com)  
 Copyright © Board of Trade of the City of Chicago, Inc. 2005 ALL RIGHTS RESERVED

**Wheat Chart 3. CBOT Wheat Futures Chart, July 2006, Bollinger Bands (20, 200)**



Source: Chicago Board of Trade (CBOT®) [CBOT.com](http://CBOT.com)  
 Copyright © Board of Trade of the City of Chicago, Inc. 2005 ALL RIGHTS RESERVED

**Wheat Chart 4. [CBOT Wheat Futures Chart, July 2006, Wilder's RSI \(14\)](#)**



Source: Chicago Board of Trade (CBOT®) [CBOT.com](#)  
 Copyright © Board of Trade of the City of Chicago, Inc. 2005 ALL RIGHTS RESERVED

**Wheat Chart 5. [CBOT Wheat Futures Chart, July 2006, Slow Stochastic \(14, 3, 3, 3\)](#)**



Source: Chicago Board of Trade (CBOT®) [CBOT.com](#)  
 Copyright © Board of Trade of the City of Chicago, Inc. 2005 ALL RIGHTS RESERVED

**Wheat Chart 6. [CBOT Wheat Futures Chart, July 2006, Fast Stochastic \(14, 3\)](#)**



Source: Chicago Board of Trade (CBOT®) [CBOT.com](http://CBOT.com)  
 Copyright © Board of Trade of the City of Chicago, Inc. 2005 ALL RIGHTS RESERVED

**Wheat Chart 7. [CBOT Wheat Futures Chart, July 2006, Accumulative Distribution Index](#)**



Source: Chicago Board of Trade (CBOT®) [CBOT.com](http://CBOT.com)  
 Copyright © Board of Trade of the City of Chicago, Inc. 2005 ALL RIGHTS RESERVED

# Wheat Chart 8. [CBOT Wheat Futures Chart](#), July 2006, Volume and Open Interest (1, 1)



Source: Chicago Board of Trade (CBOT®) [CBOT.com](http://CBOT.com)

Copyright © Board of Trade of the City of Chicago, Inc. 2005 ALL RIGHTS RESERVED

The Arkansas Cooperative Extension Service offers its programs to all eligible persons regardless of race, color, national origin, religion, gender, age, disability, marital or veteran status, or any other legally protected status, and is an Equal Opportunity Employer.