

CBOT Rough Rice Futures (RR)

Open Auction

Exp	Last 1 Last 2	Net Chg	Open	High	Low	Close	Settle	Prev Settle	Hi/Lo Limit
06Jan ☒	785'5 13:35 785'0 13:35	+1'5	786'0 784'0 9:18	796'0 9:43	782'0 11:56	786'0 785'0 13:35	785'5	784'0	835'5 735'5
06Mar ☒	812'5 13:35 812'0 A 13:35	+4'5	809'0 808'0 9:18	820'0 9:42	807'0 12:04	813'0 812'0 13:35	812'5	808'0	862'5 762'5
06May ☒	834'0 13:35	+5'0	829'0 831'0 9:23	841'0 9:44	829'0 9:23	834'0 13:35	834'0	829'0	884'0 784'0
06Jul ☒	856'0 13:35	+5'0	857'0 9:33	862'0 9:44	856'0 11:52	856'0 13:35	856'0	851'0	906'0 806'0
06Sep ☒	860'0 13:35	+2'0				860'0 13:35	860'0	858'0	910'0 810'0
06Nov ☒	867'0 13:35	-1'0	875'0 9:44	875'0 9:44	865'0 11:57	867'0 13:35	867'0	868'0	917'0 817'0
07Jan ☒	875'0 13:35	Unch				875'0 13:35	875'0	875'0	925'0 825'0

Table generated December 12, 2005 15:00 CST = Chart ☒ = Option

Rice Chart 1. CBOT Rough Rice Futures Chart, January 2005, Variable Moving Average (5, 10, 20)

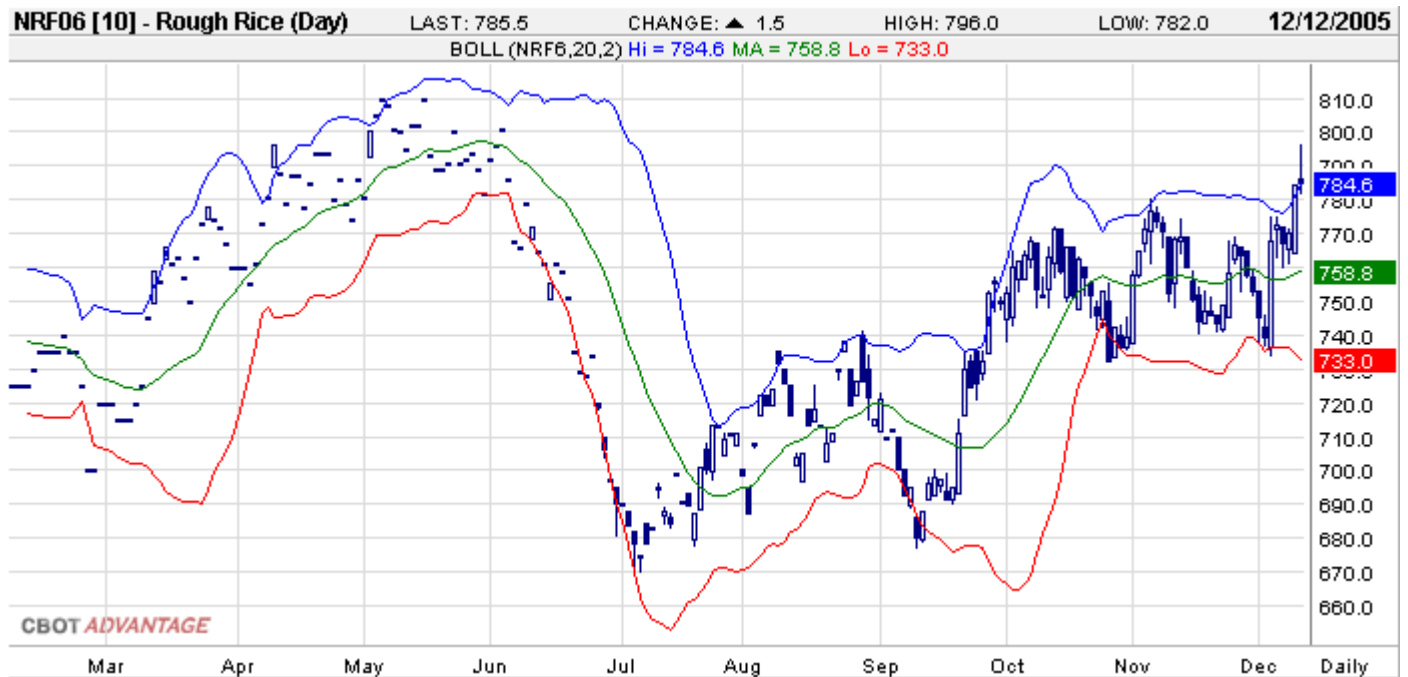


Rice Chart 2. CBOT Rough Rice Futures Chart, January 2005, Parabolic Time/Price (20, 20, 200)



Source: Chicago Board of Trade (CBOT®) CBOT.com
 Copyright © Board of Trade of the City of Chicago, Inc. 2005 ALL RIGHTS RESERVED

Rice Chart 3. CBOT Rough Rice Futures Chart, January 2005, Bollinger Bands (20, 200)



Source: Chicago Board of Trade (CBOT®) CBOT.com
 Copyright © Board of Trade of the City of Chicago, Inc. 2005 ALL RIGHTS RESERVED

Rice Chart 4. CBOT Rough Rice Futures Chart, January 2005, Wilder's RSI (14)



Source: Chicago Board of Trade (CBOT®) CBOT.com
 Copyright © Board of Trade of the City of Chicago, Inc. 2005 ALL RIGHTS RESERVED

Rice Chart 5. CBOT Rough Rice Futures Chart, January 2005, Slow Stochastic (14, 3, 3)



Source: Chicago Board of Trade (CBOT®) CBOT.com
 Copyright © Board of Trade of the City of Chicago, Inc. 2005 ALL RIGHTS RESERVED

Rice Chart 6. CBOT Rough Rice Futures Chart, January 2005, Fast Stochastic (14, 3)



Source: Chicago Board of Trade (CBOT®) CBOT.com

Copyright © Board of Trade of the City of Chicago, Inc. 2005 ALL RIGHTS RESERVED

Rice Chart 7. CBOT Rough Rice Futures Chart, January 2005, Accumulative Distribution Index



Source: Chicago Board of Trade (CBOT®) CBOT.com

Copyright © Board of Trade of the City of Chicago, Inc. 2005 ALL RIGHTS RESERVED

Rice Chart 8. CBOT Rough Rice Futures Chart, January 2005, Volume and Open Interest (1, 1)



Source: Chicago Board of Trade (CBOT®) CBOT.com

Copyright © Board of Trade of the City of Chicago, Inc. 2005 ALL RIGHTS RESERVED

CBOT Soybeans Futures

Open Auction

Exp	Last 1 Last 2	Net Chg	Open	High	Low	Close	Settle	Prev Settle	Hi/Lo Limit
06Jan ☒	584'0 13:19 583'0 13:19	+15'2	585'0 587'0 9:33	602'0 9:44	582'0 10:25	585'0 583'0 13:19	584'0	568'6	634'0 534'0
06Mar ☒	594'4 13:20 594'0 13:20	+16'0	595'0 592'0 9:33	609'0 9:44	591'0 10:26	595'0 594'0 13:20	594'4	578'4	644'4 544'4
06May ☒	598'6 13:16 598'4 13:16	+16'2	602'0 600'0 9:30	615'0 9:44	597'0 12:06	599'0 598'4 13:16	598'6	582'4	648'6 548'6
06Jul ☒	605'4 13:17 605'0 13:17	+15'0	603'0 605'0 9:31	619'4 9:47	603'0 9:30	606'0 605'0 13:17	605'4	590'4	655'4 555'4
06Aug ☒	607'6 13:17 609'0 13:17	+14'4	614'0 10:07	614'0 10:07	606'4 13:17	606'4 609'0 13:17	607'6	593'2	657'6 557'6
06Sep ☒	607'0 13:17	+17'0	612'0 614'0 10:09	614'0 10:09	607'0 12:41	607'0 13:17	607'0	590'0	657'0 557'0
06Nov ☒	611'0 13:18	+13'0	609'0 610'4 9:34	625'0 9:49	608'0 9:37	611'0 13:18	611'0	598'0	661'0 561'0
07Jan ☒	614'0 13:18	+14'0	618'0 10:23	618'0 10:23	612'0 11:20	614'0 13:18	614'0	600'0	664'0 564'0
07Mar ☒	615'0 13:18	+12'0	615'0 11:09	615'0 11:09	615'0 11:09	615'0 13:18	615'0	603'0	665'0 565'0
07Jul ---	623'0 13:18	+13'0	625'0 11:42	625'0 11:42	618'0 11:46	623'0 13:18	623'0	610'0	673'0 573'0
07Nov ☒	618'0 13:18	+6'0	615'0 11:16	618'0 12:42	615'0 11:16	618'0 13:18	618'0	612'0	668'0 568'0

Table generated December 12, 2005 15:10 CST

= Chart ☒ = Option

Soybeans Chart 1. CBOT Soybeans Futures Chart, January 2005, Variable Moving Average (5, 10, 20)



Source: Chicago Board of Trade (CBOT®) CBOT.com
 Copyright © Board of Trade of the City of Chicago, Inc. 2005 ALL RIGHTS RESERVED

Soybeans Chart 2. CBOT Soybeans Futures Chart, January 2005, Parabolic Time/Price (20, 20, 200)



Source: Chicago Board of Trade (CBOT®) CBOT.com
 Copyright © Board of Trade of the City of Chicago, Inc. 2005 ALL RIGHTS RESERVED

Soybeans Chart 3. CBOT Soybeans Futures Chart, January 2005, Bollinger Bands (20, 200)



Source: Chicago Board of Trade (CBOT®) CBOT.com
 Copyright © Board of Trade of the City of Chicago, Inc. 2005 ALL RIGHTS RESERVED

Soybeans Chart 4. CBOT Soybeans Futures Chart, January 2005, Wilder's RSI (14)



Source: Chicago Board of Trade (CBOT®) CBOT.com
 Copyright © Board of Trade of the City of Chicago, Inc. 2005 ALL RIGHTS RESERVED

Soybeans Chart 5. CBOT Soybeans Futures Chart, January 2005, Slow Stochastic (14, 3, 3, 3)



Source: Chicago Board of Trade (CBOT®) CBOT.com
 Copyright © Board of Trade of the City of Chicago, Inc. 2005 ALL RIGHTS RESERVED

Soybeans Chart 6. CBOT Soybeans Futures Chart, January 2005, Fast Stochastic (14, 3)



Source: Chicago Board of Trade (CBOT®) CBOT.com
 Copyright © Board of Trade of the City of Chicago, Inc. 2005 ALL RIGHTS RESERVED

Soybeans Chart 7. [CBOT Soybeans Futures Chart, January 2005, Accumulative Distribution Index](#)



Source: Chicago Board of Trade (CBOT®) [CBOT.com](#)
 Copyright © Board of Trade of the City of Chicago, Inc. 2005 ALL RIGHTS RESERVED

Soybeans Chart 8. [CBOT Soybeans Futures Chart, January 2005, Volume and Open Interest \(1, 1\)](#)



Source: Chicago Board of Trade (CBOT®) [CBOT.com](#)
 Copyright © Board of Trade of the City of Chicago, Inc. 2005 ALL RIGHTS RESERVED

CBOT Corn Futures

Open Auction

Exp	Last 1 Last 2	Net Chg	Open	High	Low	Close	Settle	Prev Settle	Hi/Lo Limit
05Dec	194'2 13:20 194'4 13:20	+4'4	195'0 9:31	195'0 9:30	192'6 11:53	194'0 194'4 13:20	194'2	189'6	
06Mar Ω	207'6 13:20 208'0 13:20	+4'0	206'4 207'0 9:31	209'2 9:45	205'6 11:29	207'4 208'0 13:20	207'6	203'6	227'6 187'6
06May Ω	216'6 13:20 217'0 13:20	+4'2	215'0 216'0 9:32	218'0 9:45	215'0 9:30	216'4 217'0 13:20	216'6	212'4	236'6 196'6
06Jul Ω	224'6 13:20 225'0 13:20	+3'4	223'4 224'0 9:33	226'0 9:43	223'0 11:32	224'6 225'0 13:20	224'6	221'2	244'6 204'6
06Sep Ω	233'2 13:20 233'4 13:20	+3'0	233'4 233'2 9:40	234'4 9:45	232'0 11:32	233'2 233'4 13:20	233'2	230'2	253'2 213'2
06Dec Ω	244'2 13:20 244'4 13:20	+3'0	244'0 244'4 9:34	245'4 9:47	243'0 11:29	244'0 244'4 13:20	244'2	241'2	264'2 224'2
07Mar Ω	251'6 13:21 252'0 13:21	+2'2	251'6 9:47	252'2 10:17	250'4 11:39	251'4 252'0 13:21	251'6	249'4	271'6 231'6
07May Ω	255'4 13:20	+2'4	255'0 9:54	256'0 11:15	254'2 11:28	255'4 13:20	255'4	253'0	275'4 235'4
07Jul	260'0 13:20	+2'0	259'4 9:55	260'4 10:17	258'2 11:58	260'0 13:20	260'0	258'0	280'0 240'0
07Dec ----	260'0 13:20	+0'4	259'0 259'4 9:37	260'4 9:46	259'0 9:36	260'0 13:20	260'0	259'4	280'0 240'0

Table generated December 12, 2005 15:20 CST

= Chart Ω = Option

Corn Chart 1. CBOT Corn Futures Chart, December 2005, Variable Moving Average (5, 10, 20)



Source: Chicago Board of Trade (CBOT®) CBOT.com
 Copyright © Board of Trade of the City of Chicago, Inc. 2005 ALL RIGHTS RESERVED

Corn Chart 2. CBOT Corn Futures Chart, December 2005, Parabolic Time/Price (20, 20, 200)



Source: Chicago Board of Trade (CBOT®) CBOT.com
 Copyright © Board of Trade of the City of Chicago, Inc. 2005 ALL RIGHTS RESERVED

Corn Chart 3. CBOT Corn Futures Chart, December 2005, Bollinger Bands (20, 200)



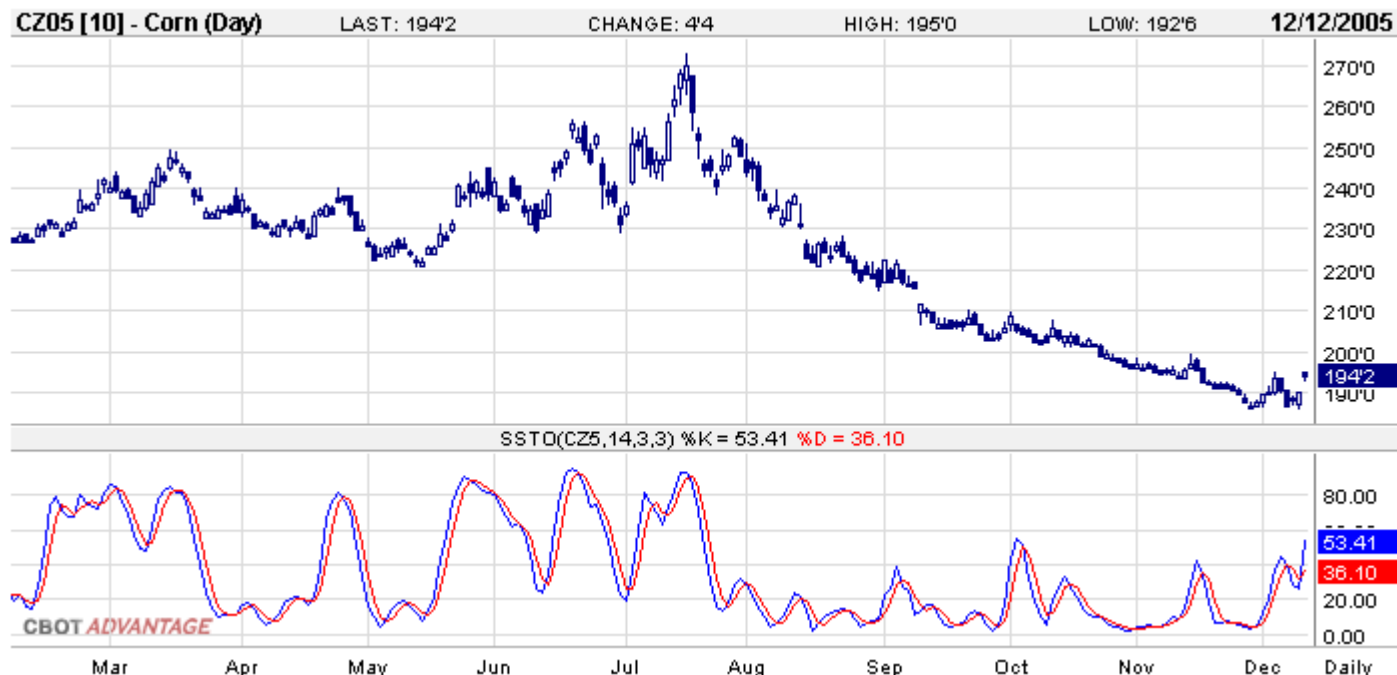
Source: Chicago Board of Trade (CBOT®) CBOT.com
 Copyright © Board of Trade of the City of Chicago, Inc. 2005 ALL RIGHTS RESERVED

Corn Chart 4. CBOT Corn Futures Chart, December 2005, Wilder's RSI (14)



Source: Chicago Board of Trade (CBOT®) CBOT.com
 Copyright © Board of Trade of the City of Chicago, Inc. 2005 ALL RIGHTS RESERVED

Corn Chart 5. CBOT Corn Futures Chart, December 2005, Slow Stochastic (14, 3, 3)



Source: Chicago Board of Trade (CBOT®) CBOT.com
 Copyright © Board of Trade of the City of Chicago, Inc. 2005 ALL RIGHTS RESERVED

Corn Chart 6. CBOT Corn Futures Chart, December 2005, Fast Stochastic (14, 3)



Source: Chicago Board of Trade (CBOT®) CBOT.com
 Copyright © Board of Trade of the City of Chicago, Inc. 2005 ALL RIGHTS RESERVED

Corn Chart 7. CBOT Corn Futures Chart, December 2005, Accumulative Distribution Index



Source: Chicago Board of Trade (CBOT®) CBOT.com
 Copyright © Board of Trade of the City of Chicago, Inc. 2005 ALL RIGHTS RESERVED

Corn Chart 8. CBOT Corn Futures Chart, December 2005, Volume and Open Interest (1, 1)



Source: Chicago Board of Trade (CBOT®) CBOT.com
 Copyright © Board of Trade of the City of Chicago, Inc. 2005 ALL RIGHTS RESERVED

CBOT Wheat Futures

Open Auction

Exp	Last 1 Last 2	Net Chg	Open	High	Low	Close	Settle	Prev Settle	Hi/Lo Limit
05Dec	299'4 13:19	+6'4	296'4 297'0 9:32	299'4 10:01	296'4 9:31	299'4 13:19	299'4	293'0	
06Mar ☒	314'6 13:19 315'0 13:19	+7'2	311'4 311'0 9:30	315'0 10:45	311'0 9:30	314'4 315'0 13:19	314'6	307'4	344'6 284'6
06May ☒	324'0 13:19	+7'0	320'0 9:33	324'2 10:13	320'0 9:30	324'0 13:19	324'0	317'0	354'0 294'0
06Jul ☒	333'6 13:19 334'4 13:19	+7'0	328'0 329'0 9:30	334'4 13:14	328'0 9:30	333'0 334'4 13:19	333'6	326'6	363'6 303'6
06Sep ☒	342'4 13:19	+7'4	340'0 10:38	342'4 13:15	340'0 10:38	342'4 13:19	342'4	335'0	372'4 312'4
06Dec ☒	352'4 13:19 353'0 13:19	+6'2	349'4 9:35	353'0 12:19	349'0 9:34	352'0 353'0 13:19	352'4	346'2	382'4 322'4
07Mar ☒	361'0 13:19	+6'4				361'0 13:19	361'0	354'4	391'0 331'0
07Jul ---	359'4 13:19	+3'0	360'0 10:07	360'0 10:07	359'0 12:46	359'4 13:19	359'4	356'4	389'4 329'4

Table generated December 12, 2005 15:20 CST = Chart ☒ = Option

Wheat Chart 1. CBOT Wheat Futures Chart, July 2006, Variable Moving Average (5, 10, 20)



Source: Chicago Board of Trade (CBOT®) CBOT.com
 Copyright © Board of Trade of the City of Chicago, Inc. 2005 ALL RIGHTS RESERVED

Wheat Chart 2. CBOT Wheat Futures Chart, July 2006, Parabolic Time/Price (20, 20, 200)



Source: Chicago Board of Trade (CBOT®) CBOT.com
 Copyright © Board of Trade of the City of Chicago, Inc. 2005 ALL RIGHTS RESERVED

Wheat Chart 3. CBOT Wheat Futures Chart, July 2006, Bollinger Bands (20, 200)



Source: Chicago Board of Trade (CBOT®) CBOT.com
 Copyright © Board of Trade of the City of Chicago, Inc. 2005 ALL RIGHTS RESERVED

Wheat Chart 4. [CBOT Wheat Futures Chart, July 2006, Wilder's RSI \(14\)](#)



Source: Chicago Board of Trade (CBOT®) [CBOT.com](#)
 Copyright © Board of Trade of the City of Chicago, Inc. 2005 ALL RIGHTS RESERVED

Wheat Chart 5. [CBOT Wheat Futures Chart, July 2006, Slow Stochastic \(14, 3, 3, 3\)](#)



Source: Chicago Board of Trade (CBOT®) [CBOT.com](#)
 Copyright © Board of Trade of the City of Chicago, Inc. 2005 ALL RIGHTS RESERVED

Wheat Chart 6. [CBOT Wheat Futures Chart, July 2006, Fast Stochastic \(14, 3\)](#)



Source: Chicago Board of Trade (CBOT®) CBOT.com
 Copyright © Board of Trade of the City of Chicago, Inc. 2005 ALL RIGHTS RESERVED

Wheat Chart 7. [CBOT Wheat Futures Chart, July 2006, Accumulative Distribution Index](#)



Source: Chicago Board of Trade (CBOT®) CBOT.com
 Copyright © Board of Trade of the City of Chicago, Inc. 2005 ALL RIGHTS RESERVED

Wheat Chart 8. CBOT Wheat Futures Chart, July 2006, Volume and Open Interest (1, 1)



Source: Chicago Board of Trade (CBOT®) CBOT.com

Copyright © Board of Trade of the City of Chicago, Inc. 2005 ALL RIGHTS RESERVED

The Arkansas Cooperative Extension Service offers its programs to all eligible persons regardless of race, color, national origin, religion, gender, age, disability, marital or veteran status, or any other legally protected status, and is an Equal Opportunity Employer.