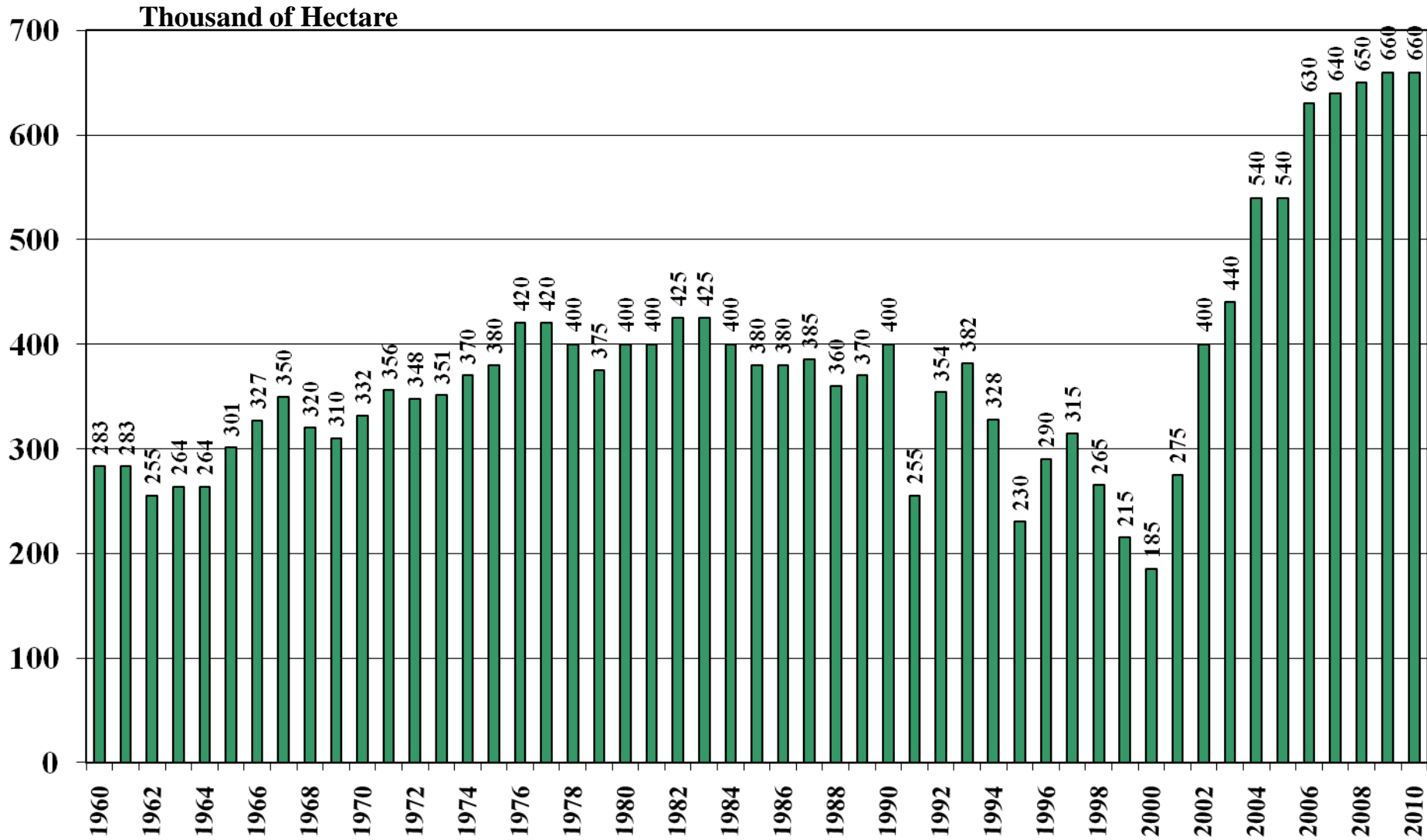


**Sierra Leone**

**USDA Supply and Demand Estimates**

**October 29, 2010**

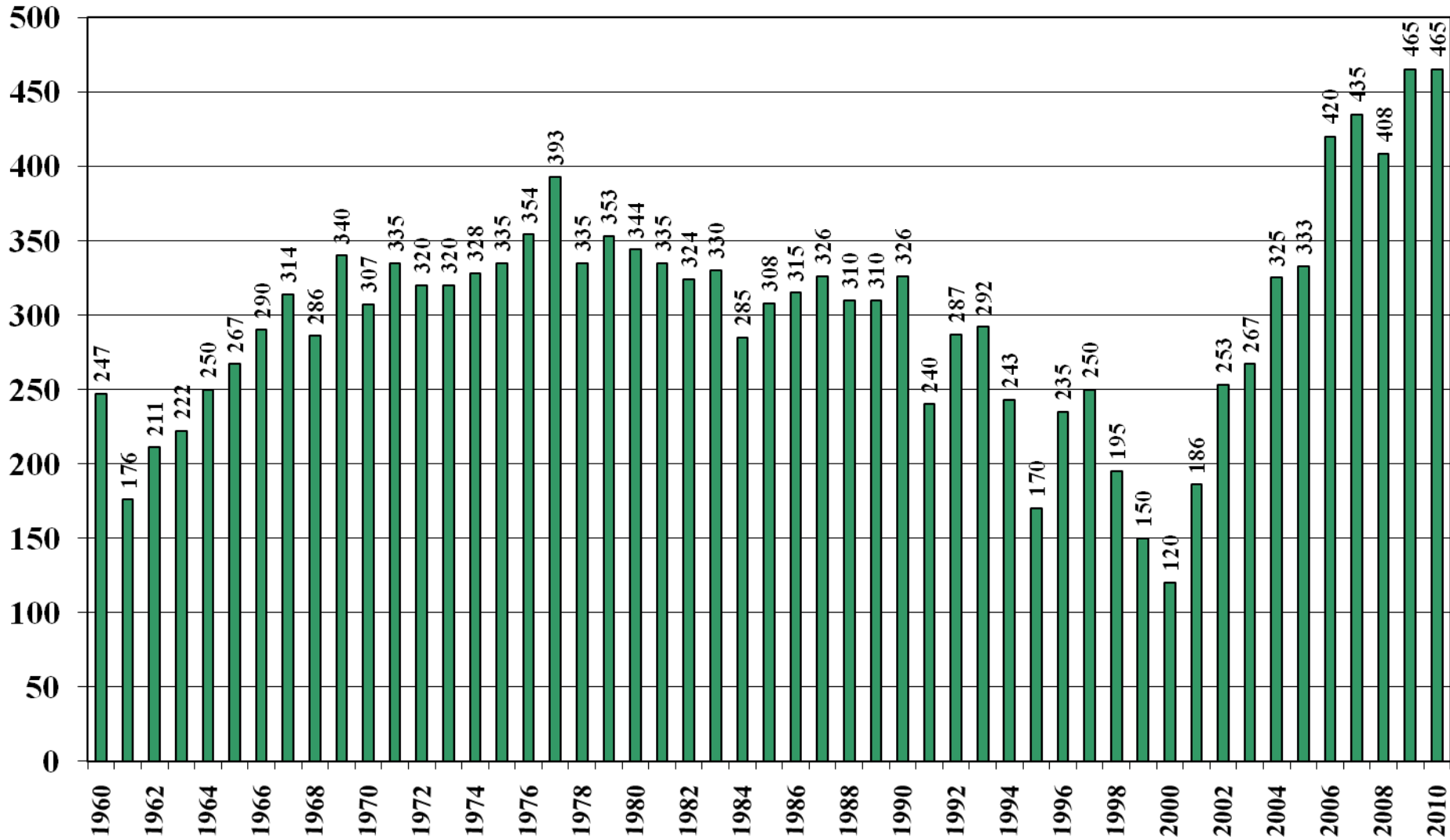
# Sierra Leone Rice Acreage Harvested 1960/61 – 2010/11



Source: [USDA Foreign Agricultural Service](#)

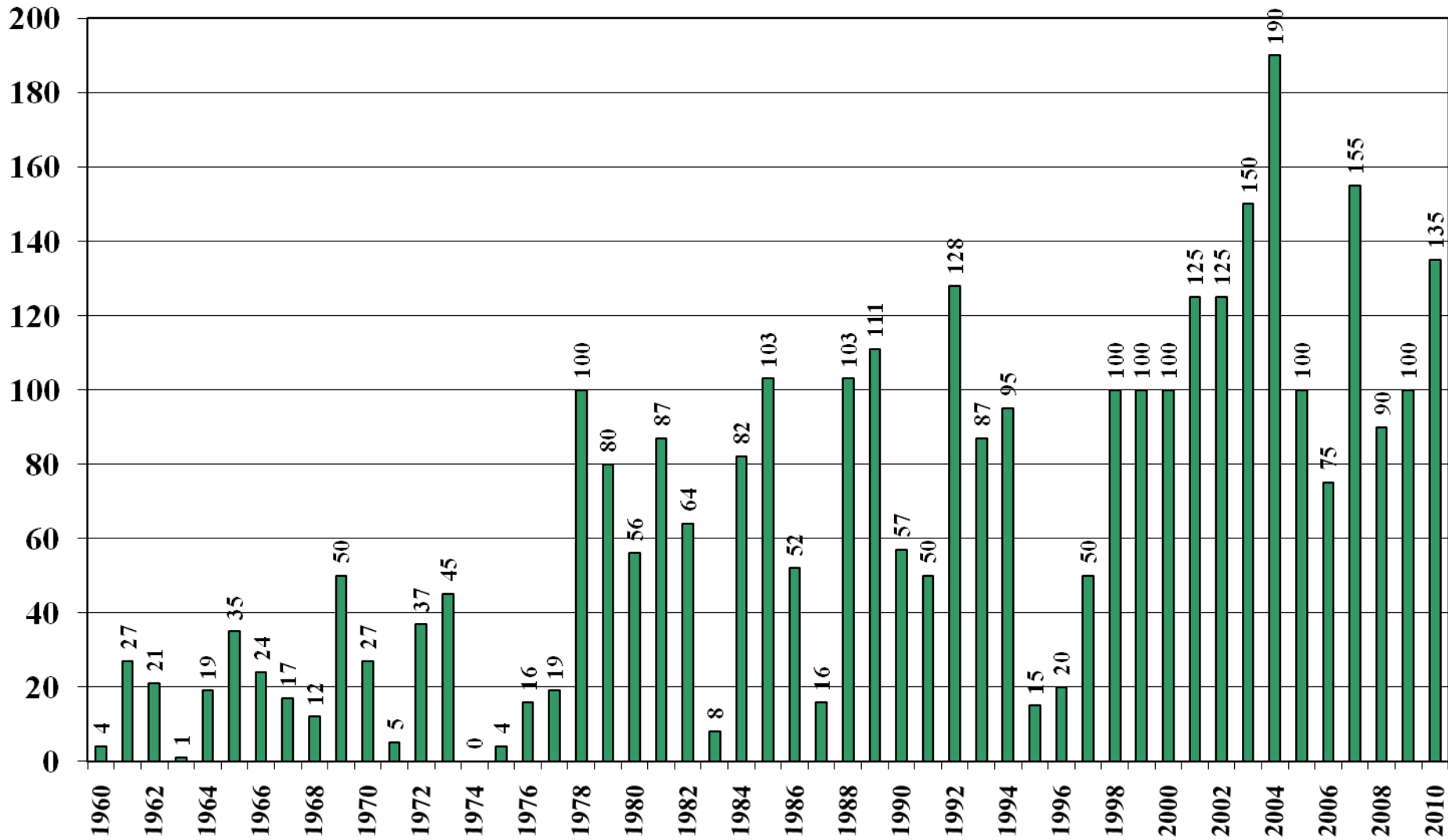
October 29, 2010

# Sierra Leone Rice Milled Production (1,000 Metric Tons) 1960/61 – 2010/11



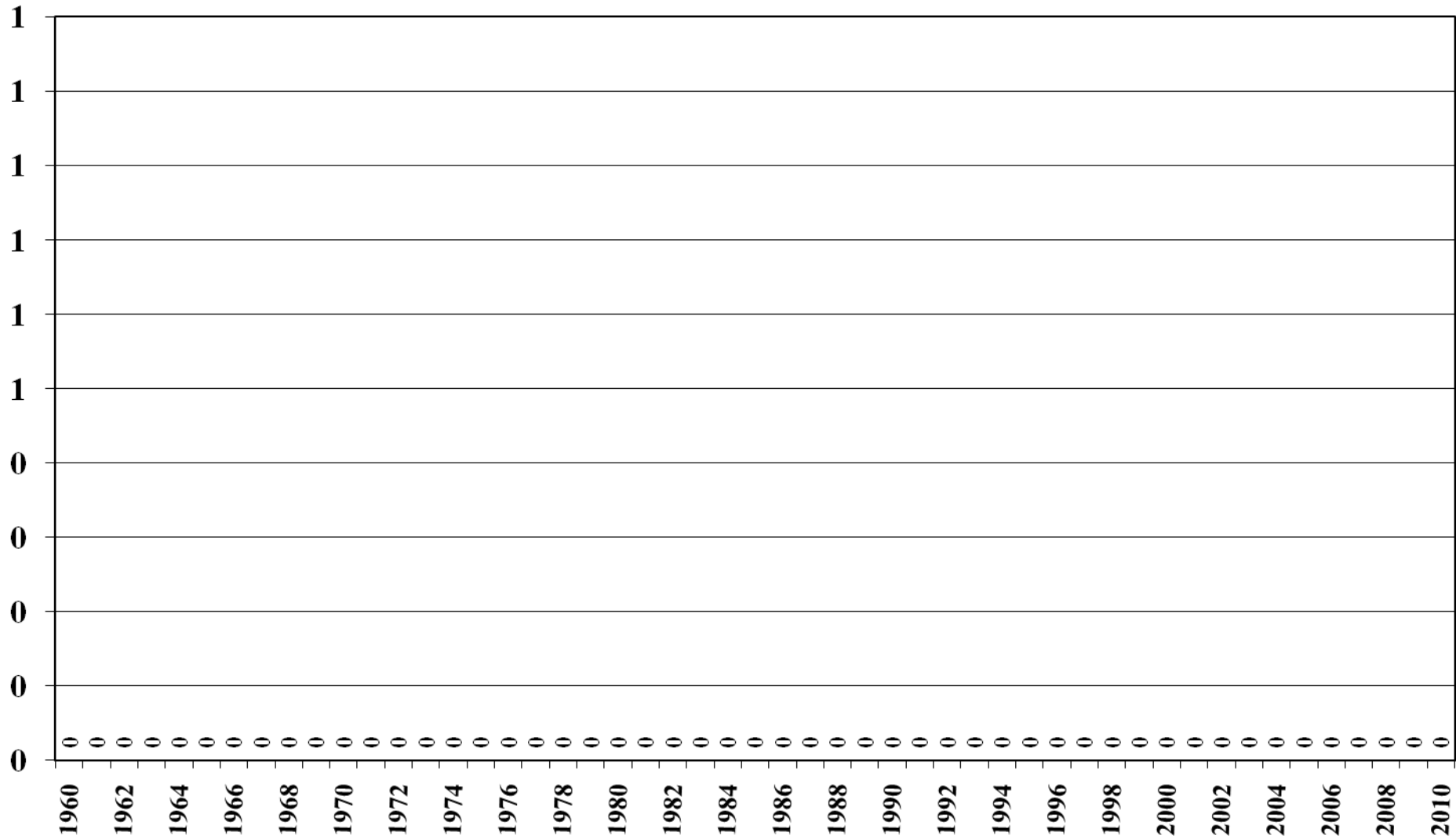
Source: [USDA Foreign Agricultural Service](#)

# Sierra Leone Rice Jan-Dec Imports (1,000 Metric Tons) 1960/61 – 2010/11



Source: [USDA Foreign Agricultural Service](#)

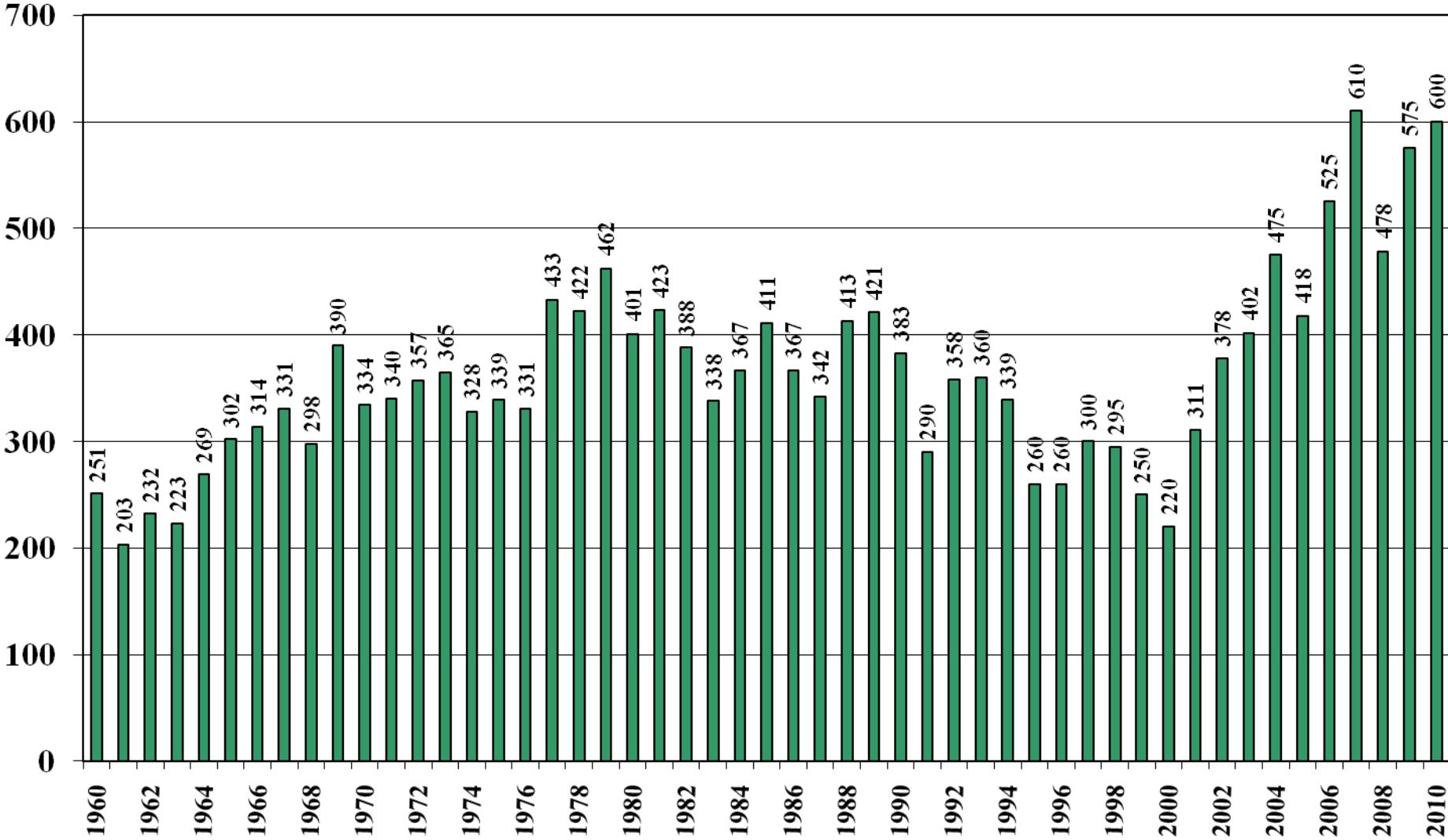
# Sierra Leone Rice Jan-Dec Exports (1,000 Metric Tons) 1960/61 – 2010/11



Source: [USDA Foreign Agricultural Service](#)

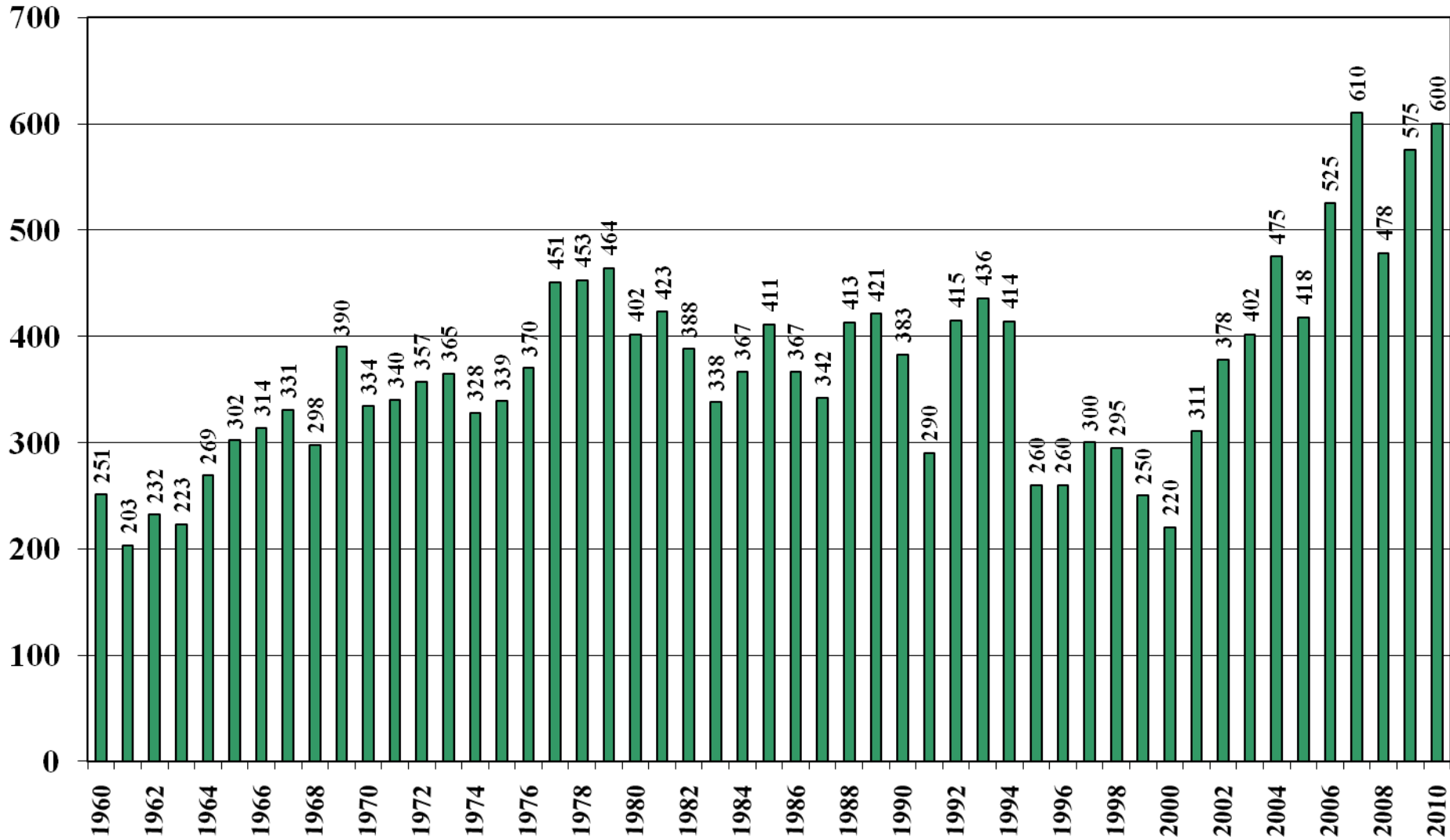
October 29, 2010

# Sierra Leone Rice Total Domestic Consumption (1,000 Metric Tons) 1960/61 – 2010/11



Source: [USDA Foreign Agricultural Service](#)

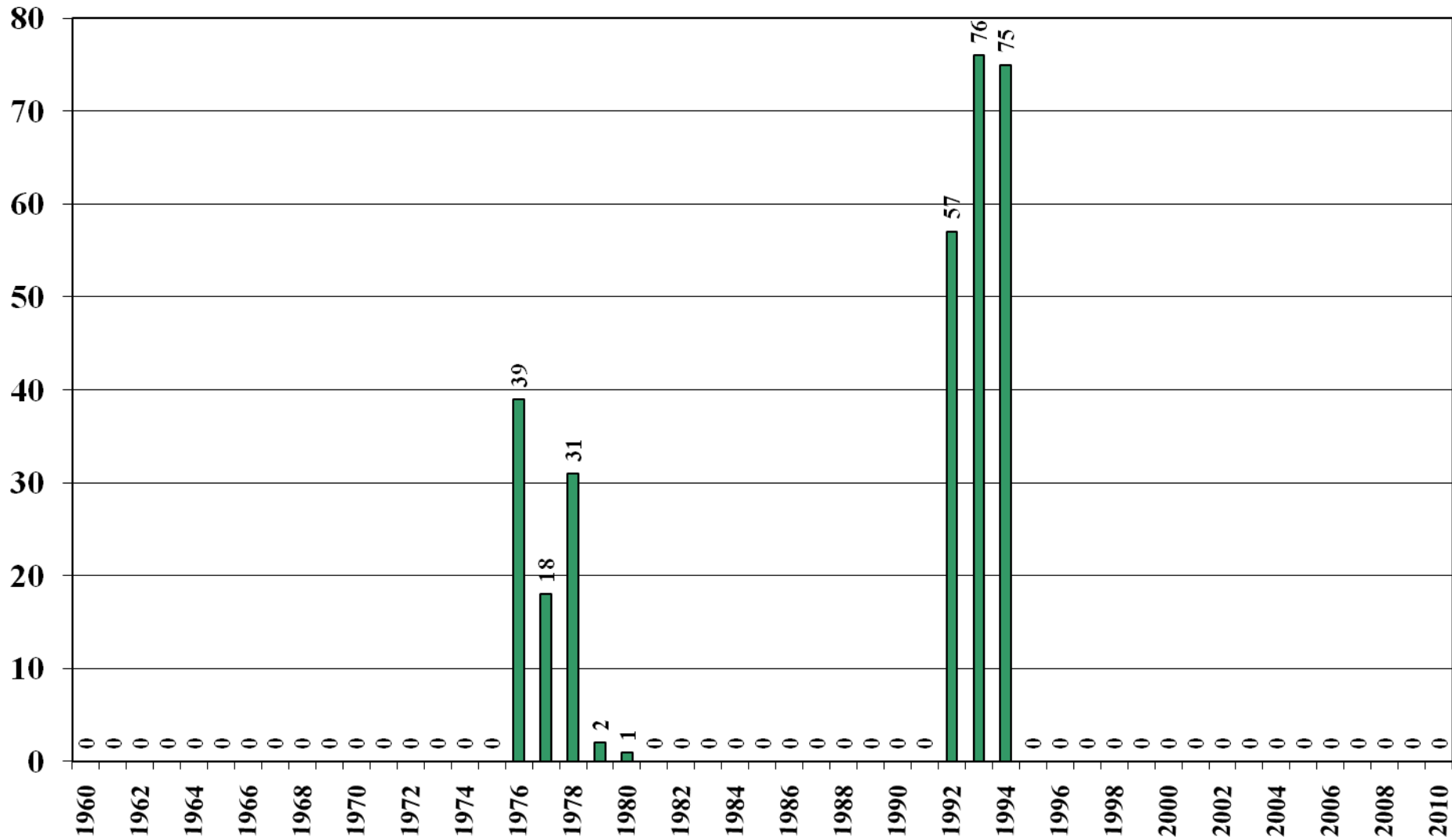
# Sierra Leone Rice Total Distribution (1,000 Metric Tons) 1960/61 – 2010/11



Source: [USDA Foreign Agricultural Service](#)

October 29, 2010

# Sierra Leone Rice Ending Stocks (1,000 Metric Tons) 1960/61 – 2010/11



Source: [USDA Foreign Agricultural Service](#)

October 29, 2010