

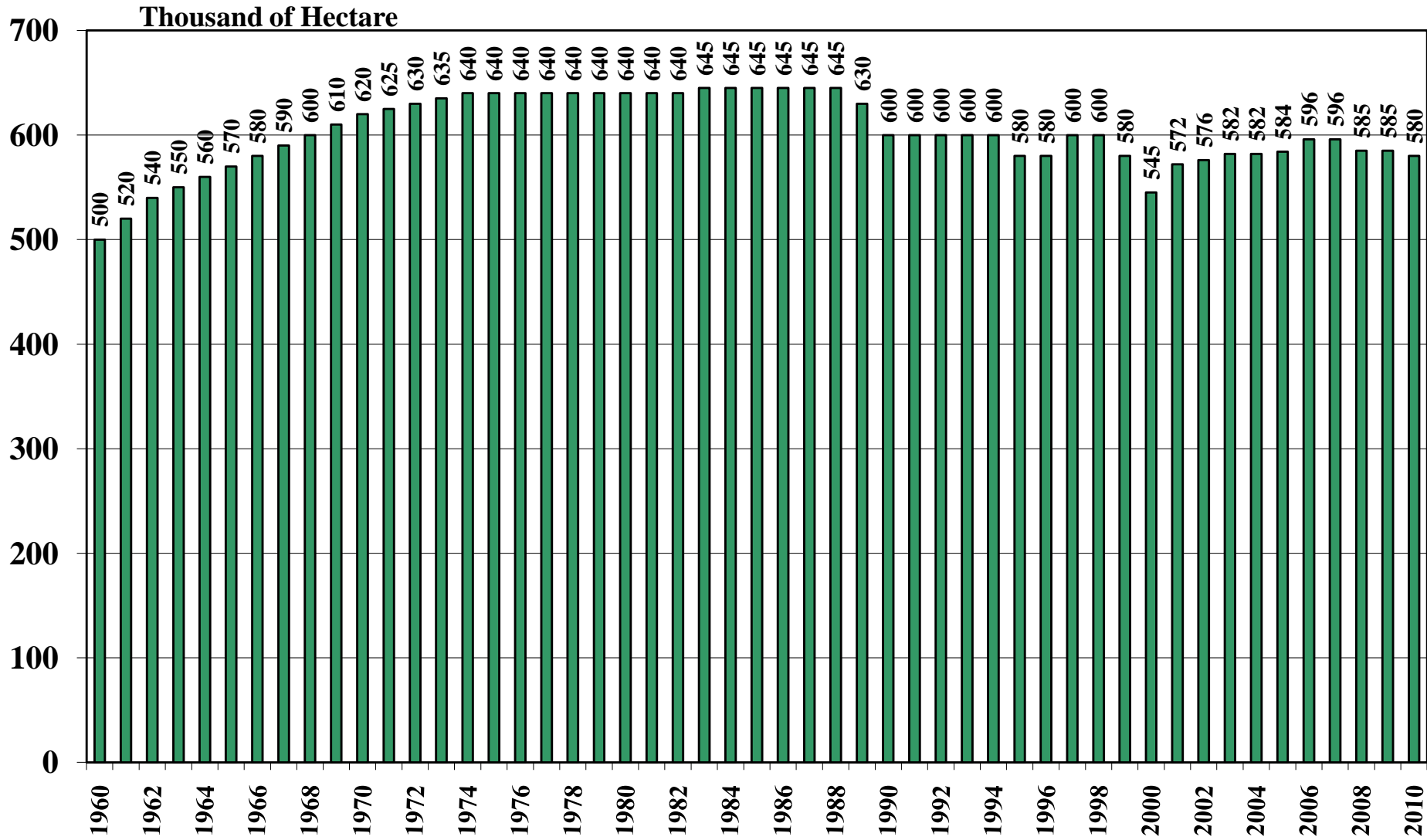
**Democratic Peoples Republic of Korea**

**USDA Supply and Demand Estimates**

**October 19, 2010**

# Democratic Peoples Republic of Korea

## Rice Acreage Harvested 1960/61 – 2010/11

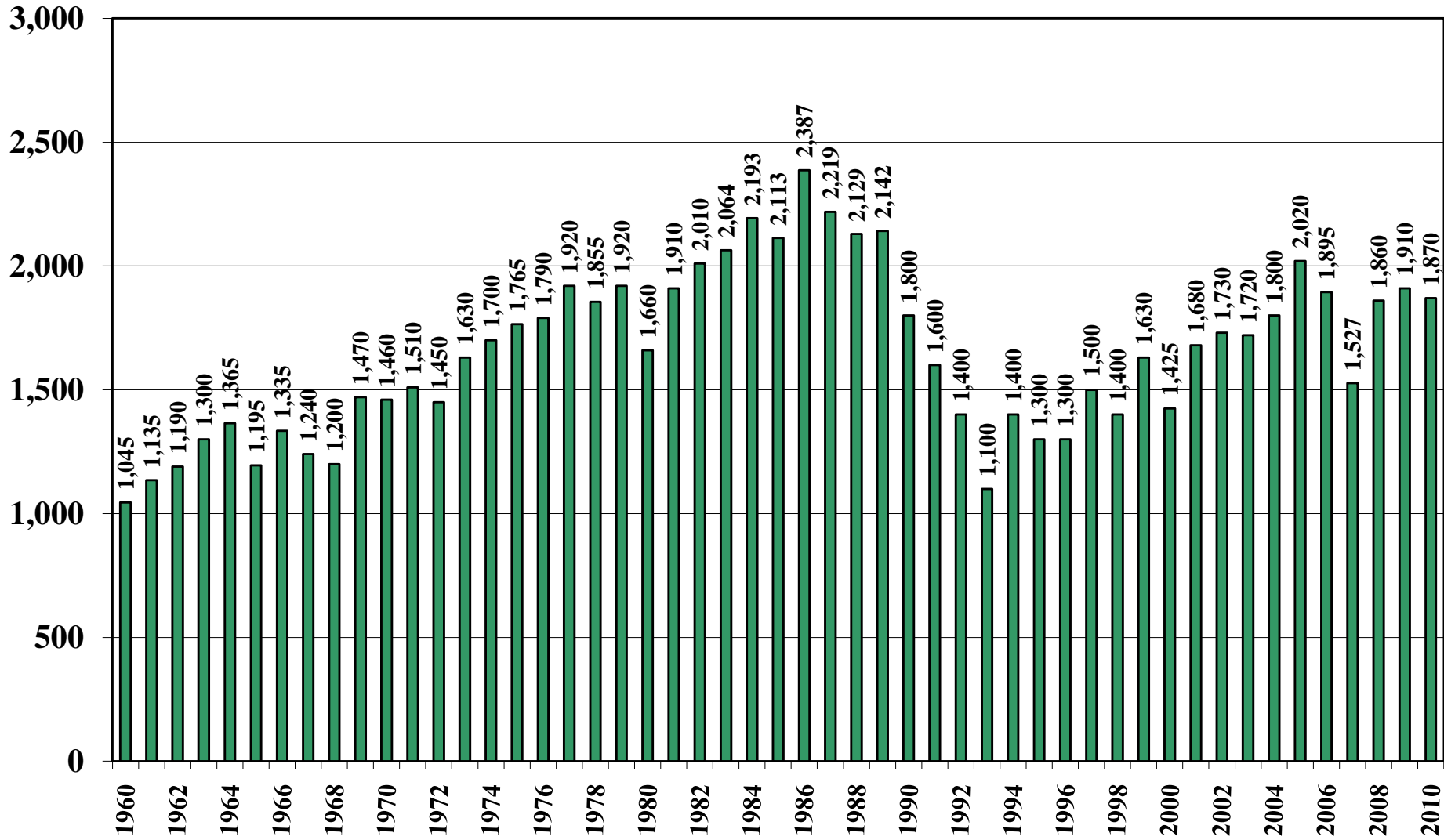


Source: [USDA Foreign Agricultural Service](#)

October 19, 2010

# Democratic Peoples Republic of Korea

## Rice Milled Production (1,000 Metric Tons) 1960/61 – 2010/11

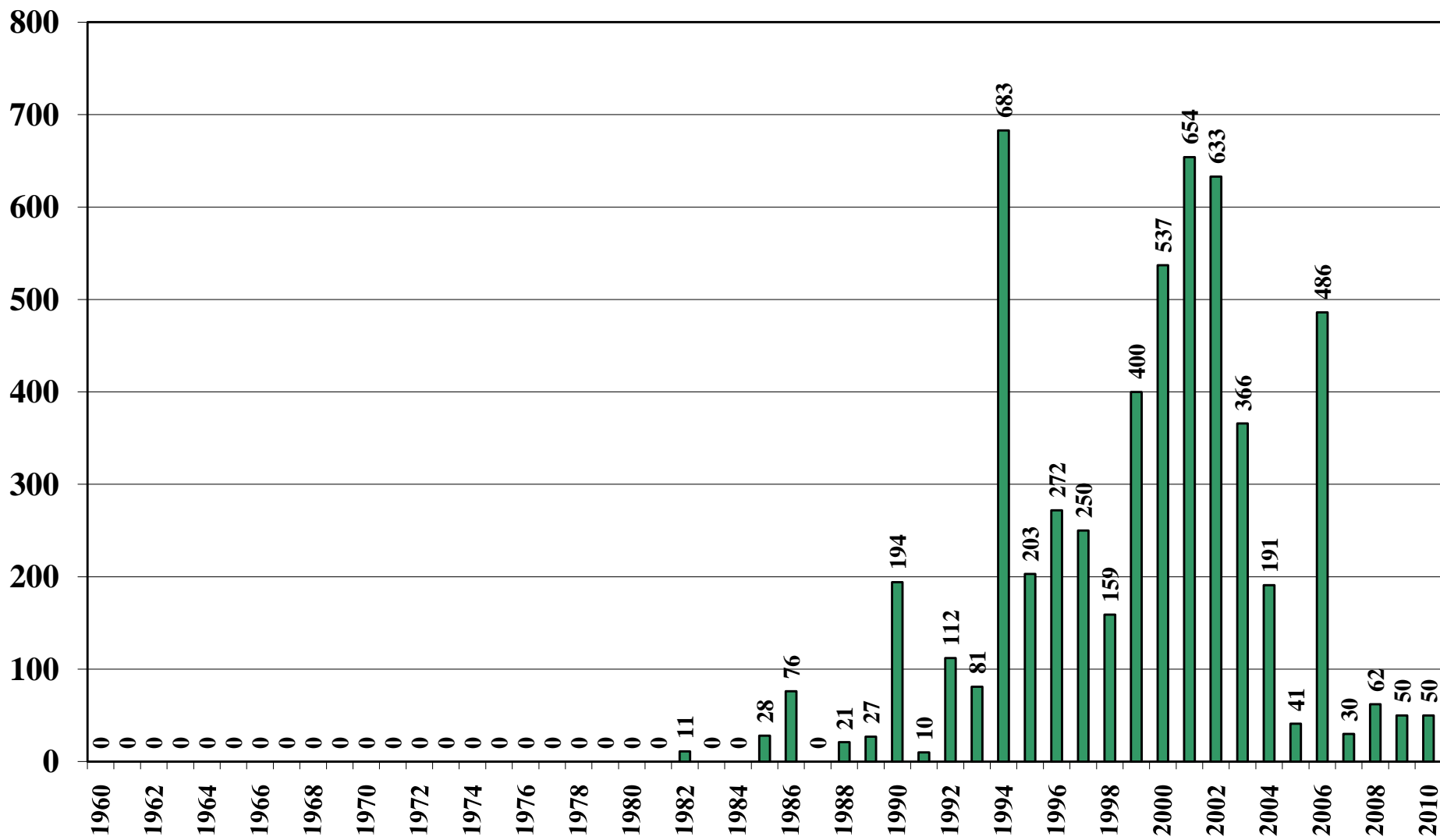


Source: [USDA Foreign Agricultural Service](#)

October 19, 2010

# Democratic Peoples Republic of Korea

## Rice Jan-Dec Imports (1,000 Metric Tons) 1960/61 – 2010/11

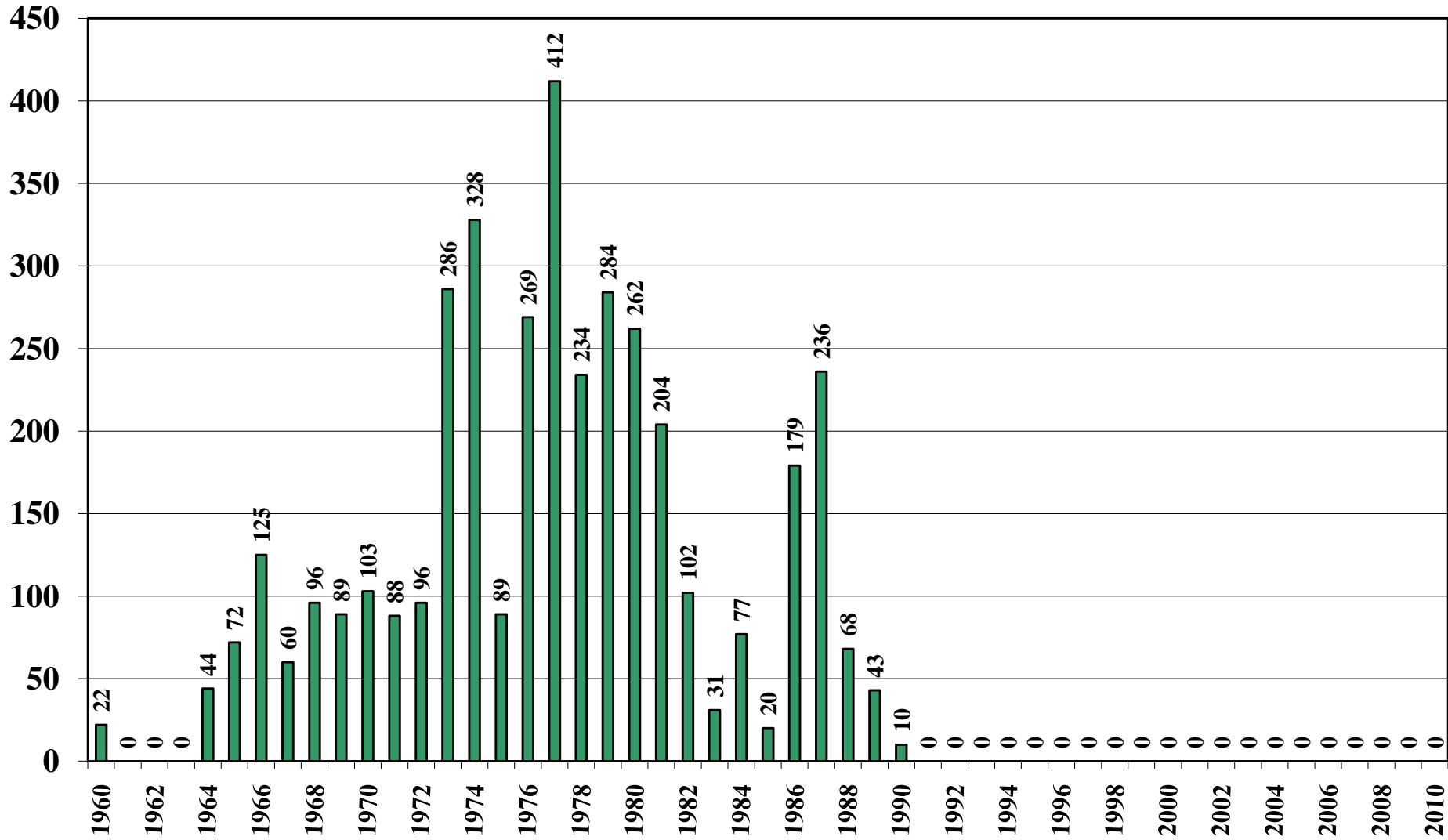


Source: [USDA Foreign Agricultural Service](#)

October 19, 2010

# Democratic Peoples Republic of Korea

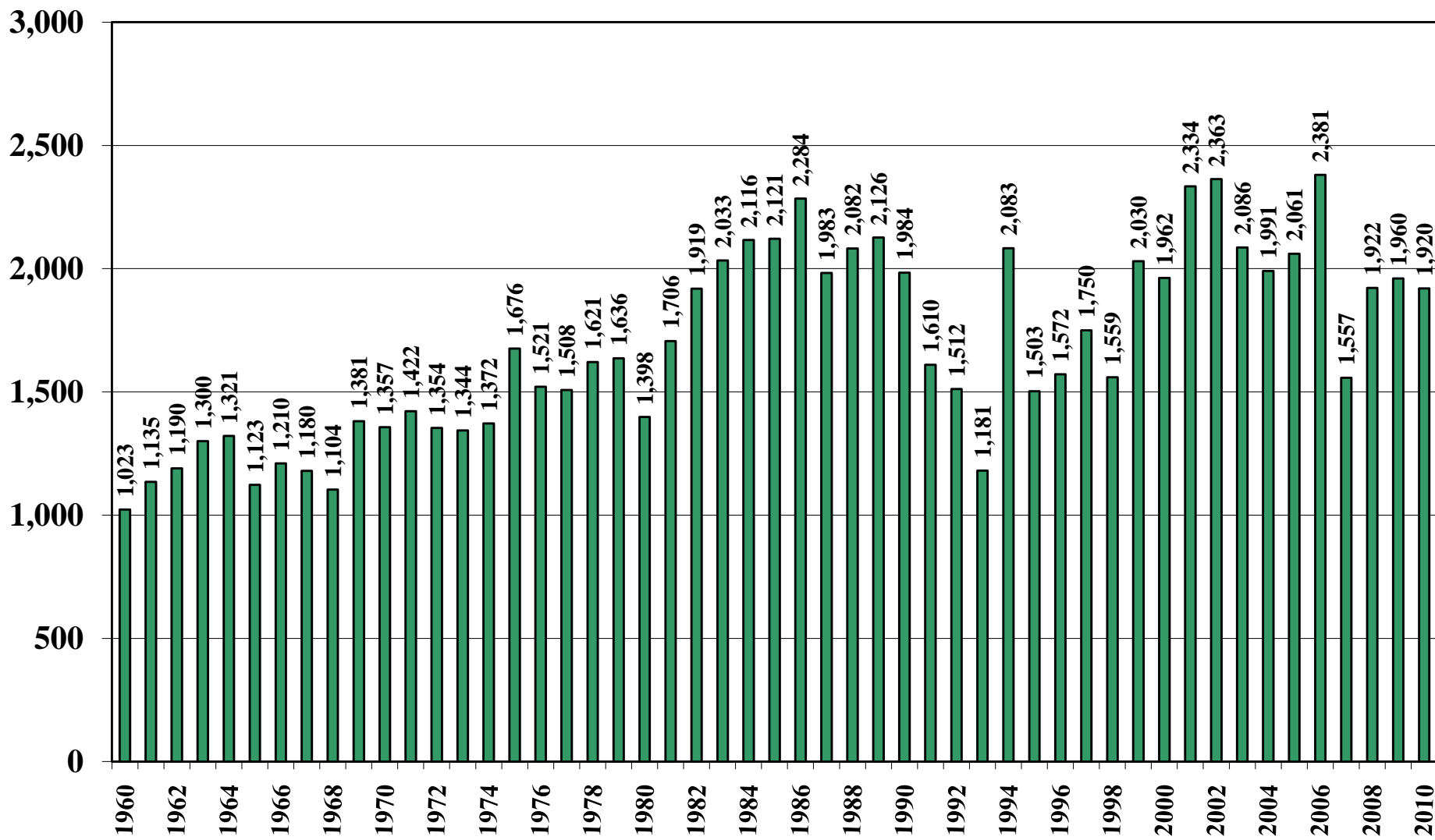
## Rice Jan-Dec Exports (1,000 Metric Tons) 1960/61 – 2010/11



Source: [USDA Foreign Agricultural Service](#)

# Democratic Peoples Republic of Korea

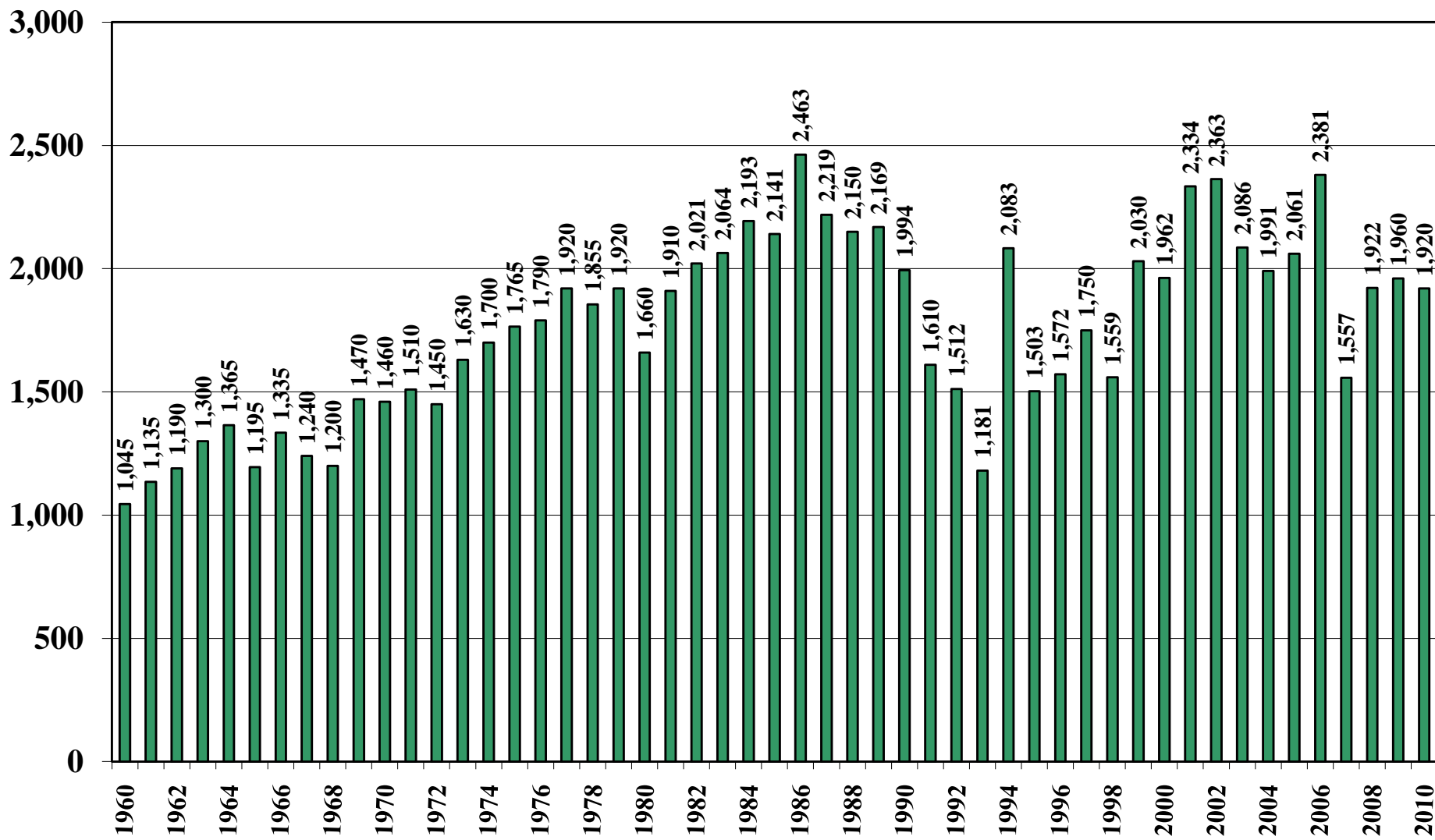
## Rice Total Domestic Consumption (1,000 Metric Tons) 1960/61 – 2010/11



Source: [USDA Foreign Agricultural Service](#)

# Democratic Peoples Republic of Korea

## Rice Total Distribution (1,000 Metric Tons) 1960/61 – 2010/11

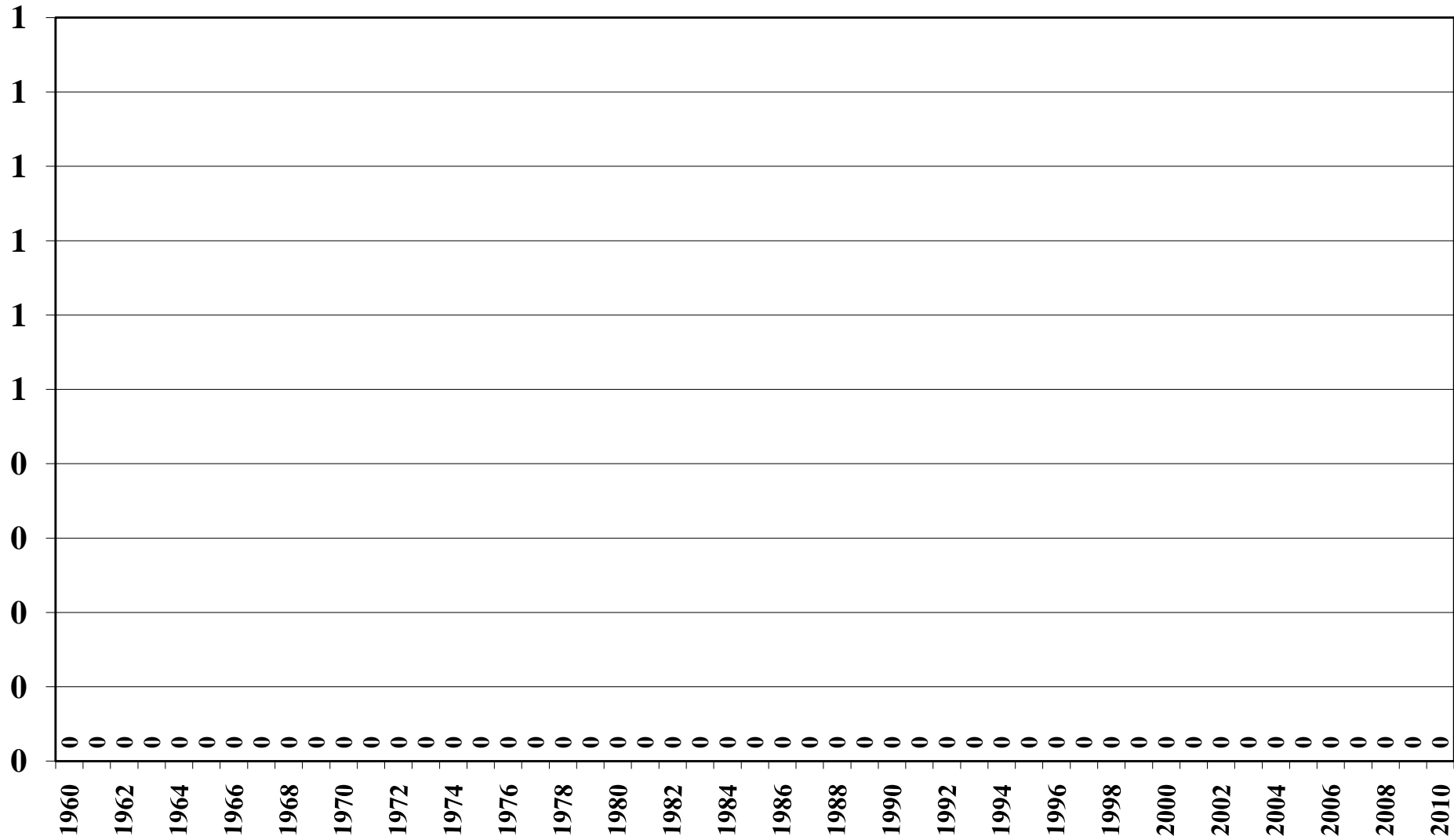


Source: [USDA Foreign Agricultural Service](#)

October 19, 2010

# Democratic Peoples Republic of Korea

## Rice Ending Stocks (1,000 Metric Tons) 1960/61 – 2010/11



Source: [USDA Foreign Agricultural Service](#)

October 19, 2010