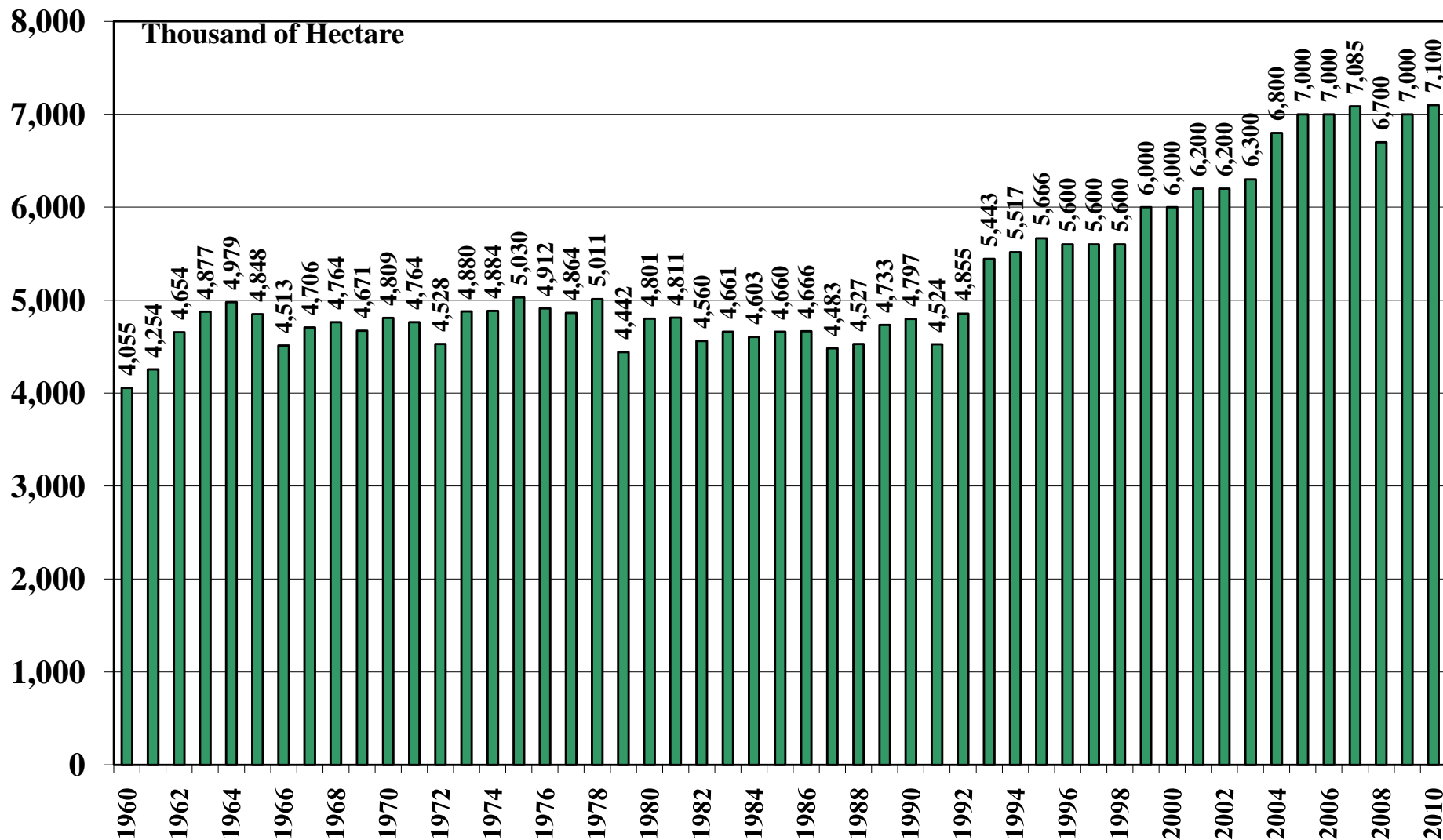


Union of Burma

USDA Supply and Demand Estimates

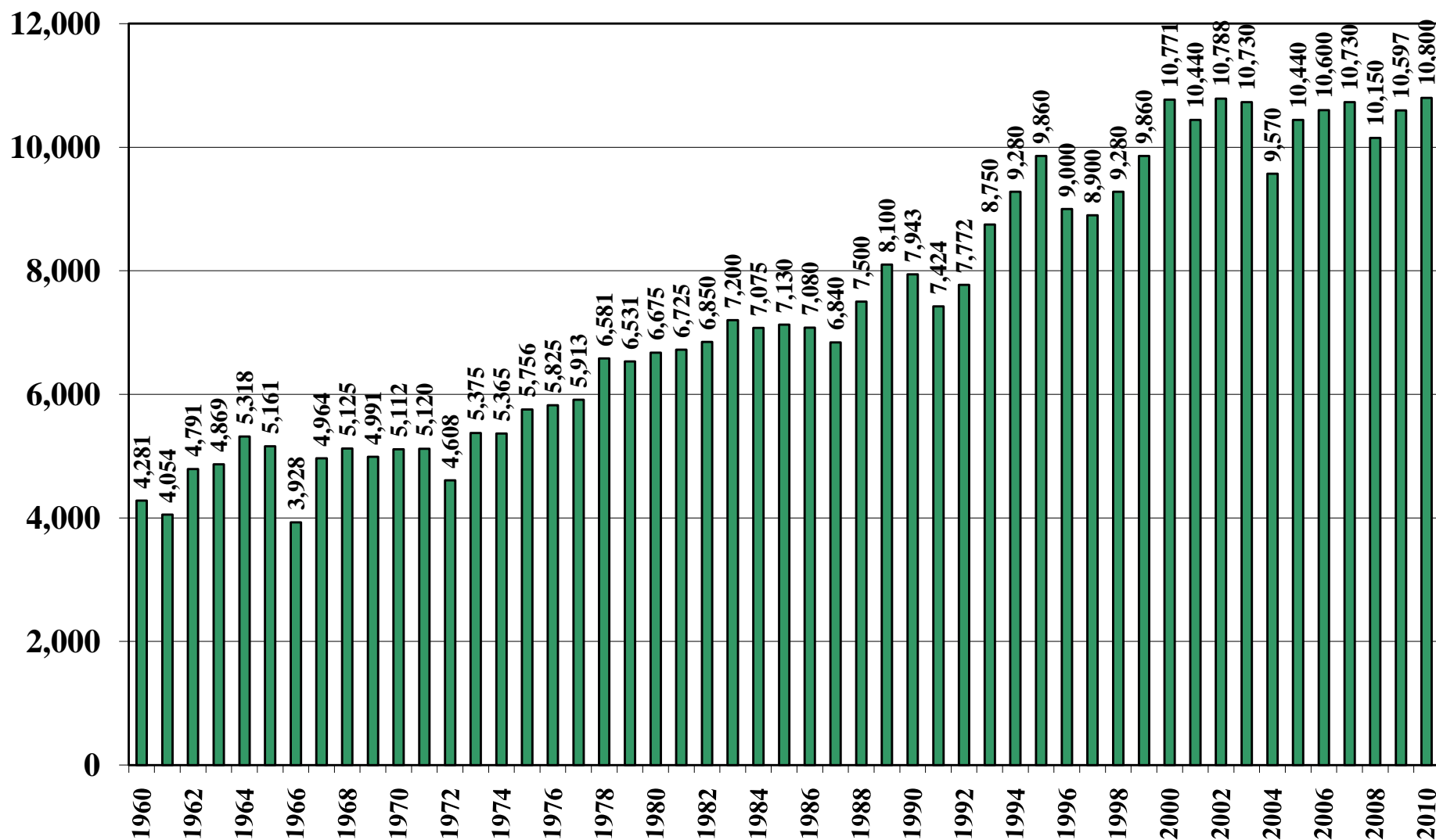
October 29, 2010

Union of Burma Rice Acreage Harvested 1960/61 – 2010/11



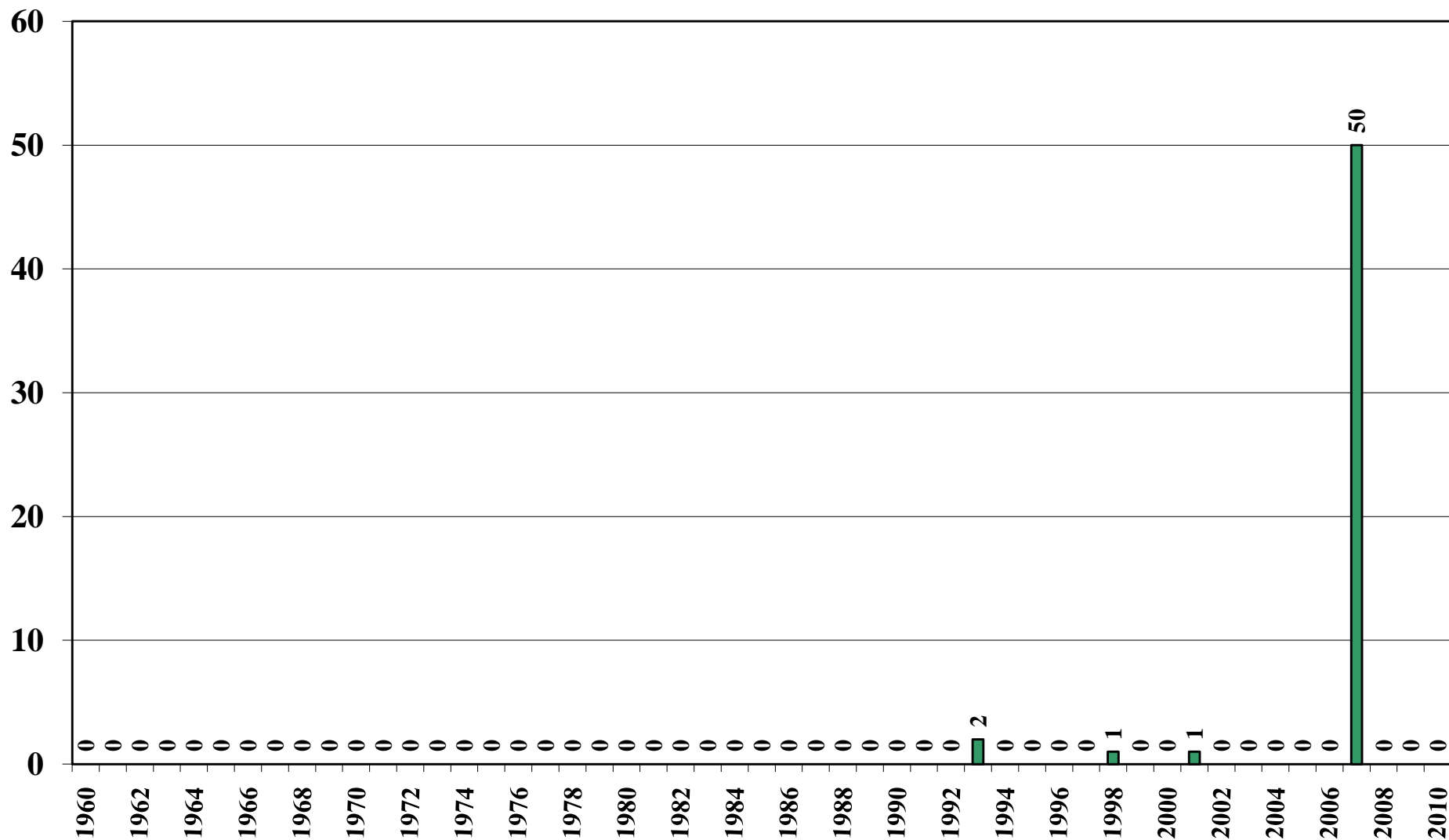
Source: [USDA Foreign Agricultural Service](#)

Union of Burma Milled Production (1,000 Metric Tons) 1960/61 – 2010/11



Source: [USDA Foreign Agricultural Service](#)

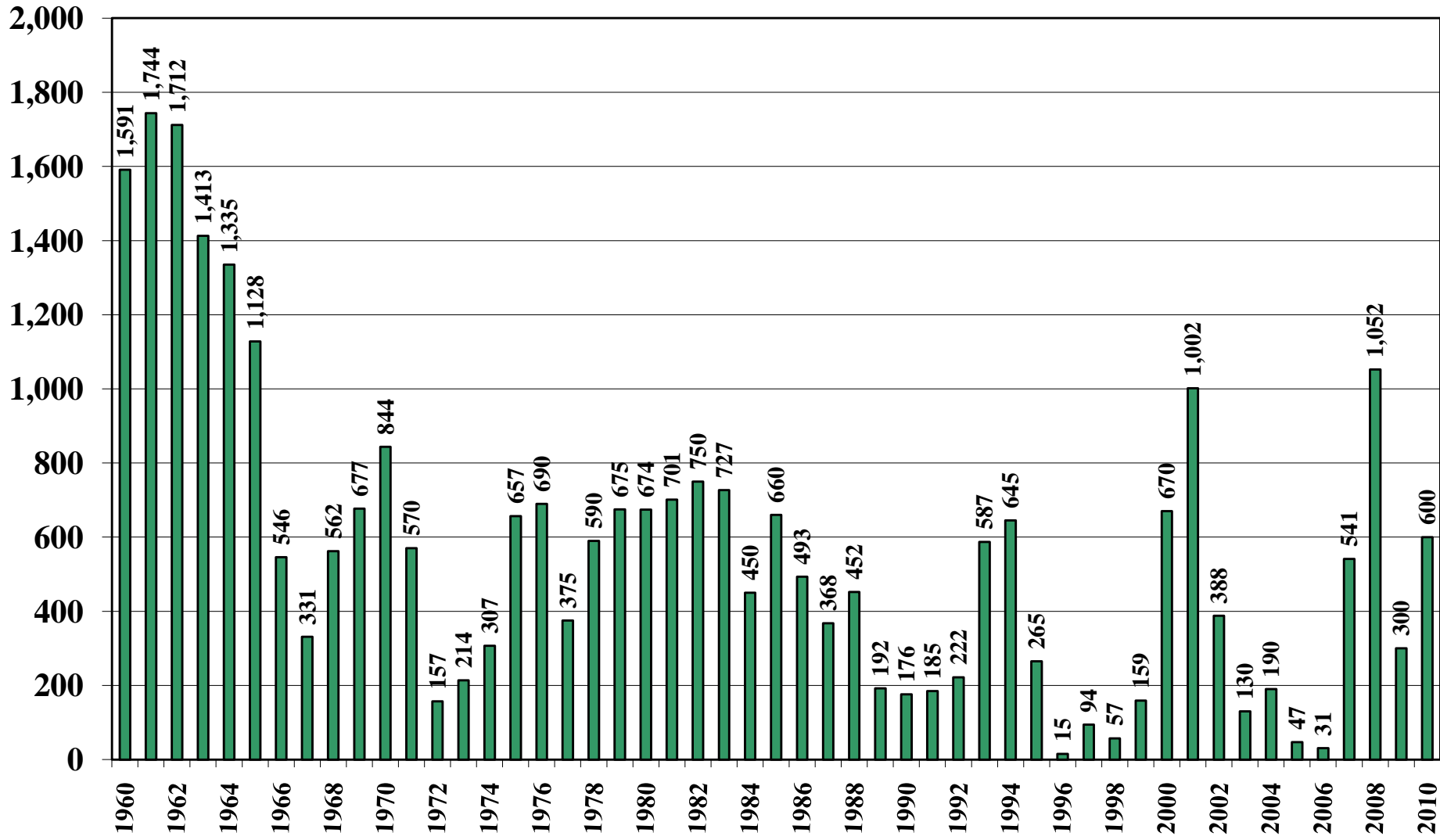
Union of Burma Rice Jan-Dec Imports (1,000 Metric Tons) 1960/61 – 2010/11



Source: [USDA Foreign Agricultural Service](#)

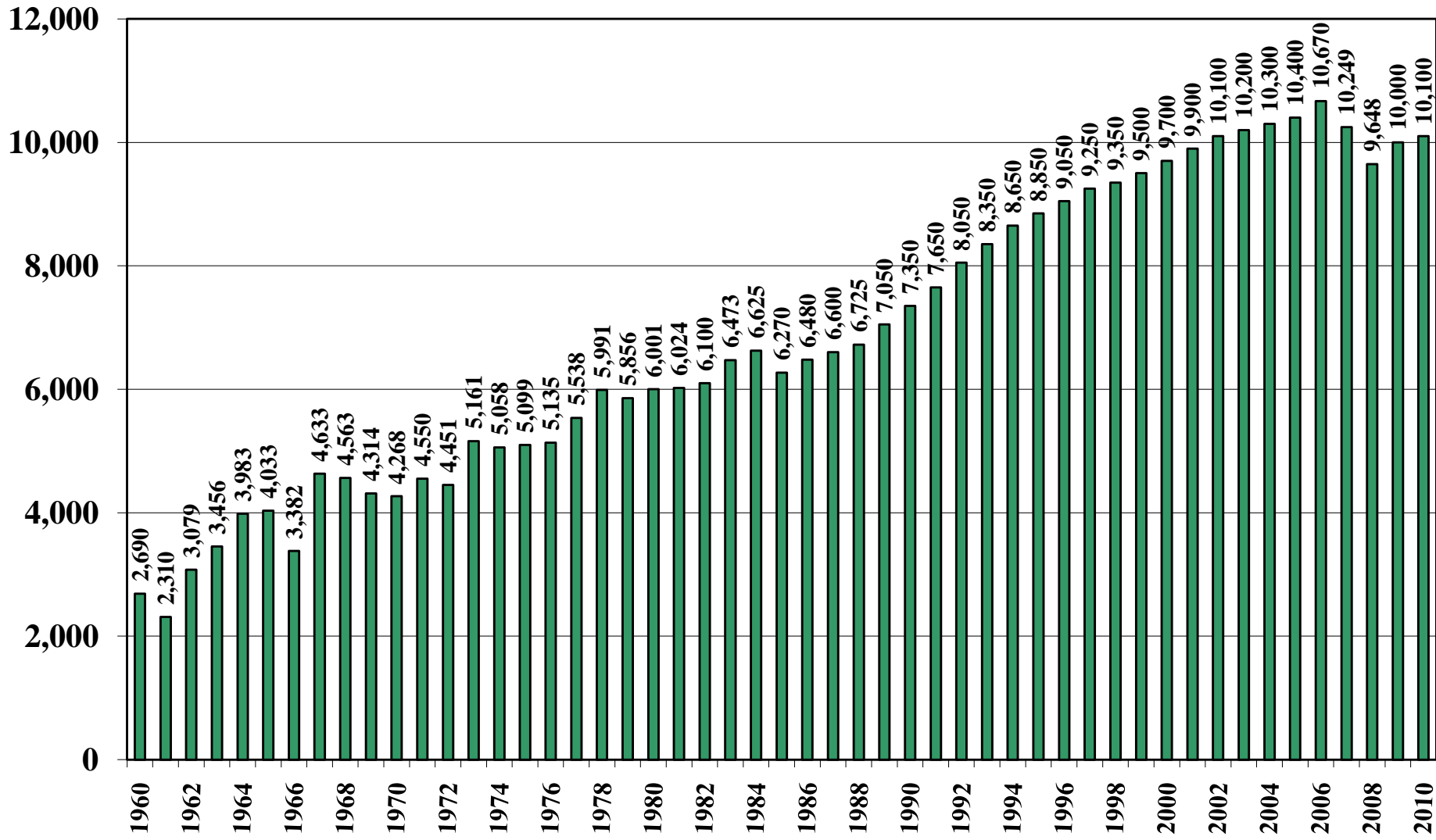
October 29, 2010

Union of Burma Rice Jan-Dec Exports (1,000 Metric Tons) 1960/61 – 2010/11



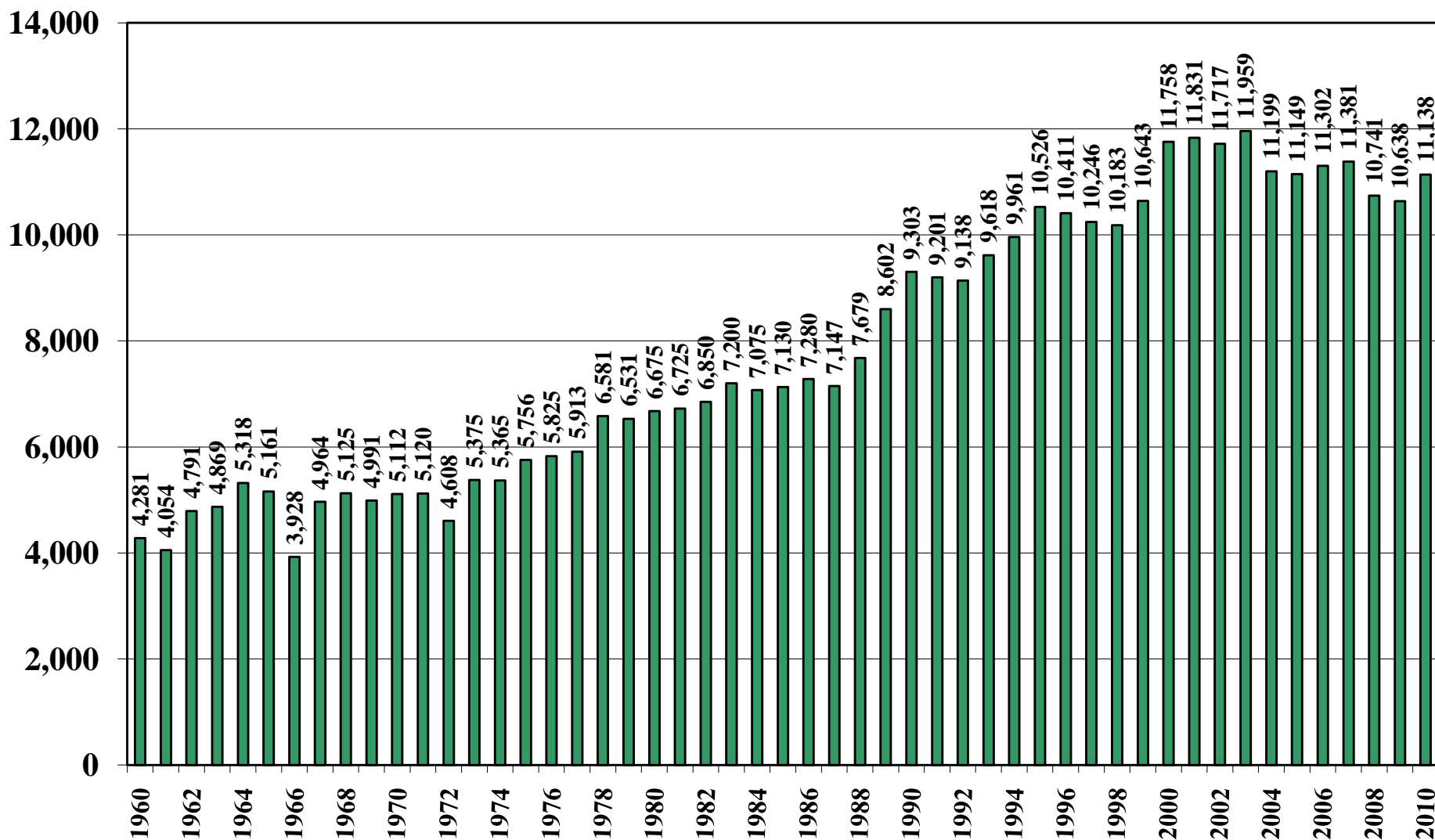
Source: [USDA Foreign Agricultural Service](#)

Union of Burma Rice Total Domestic Consumption (1,000 Metric Tons) 1960/61 – 2010/11



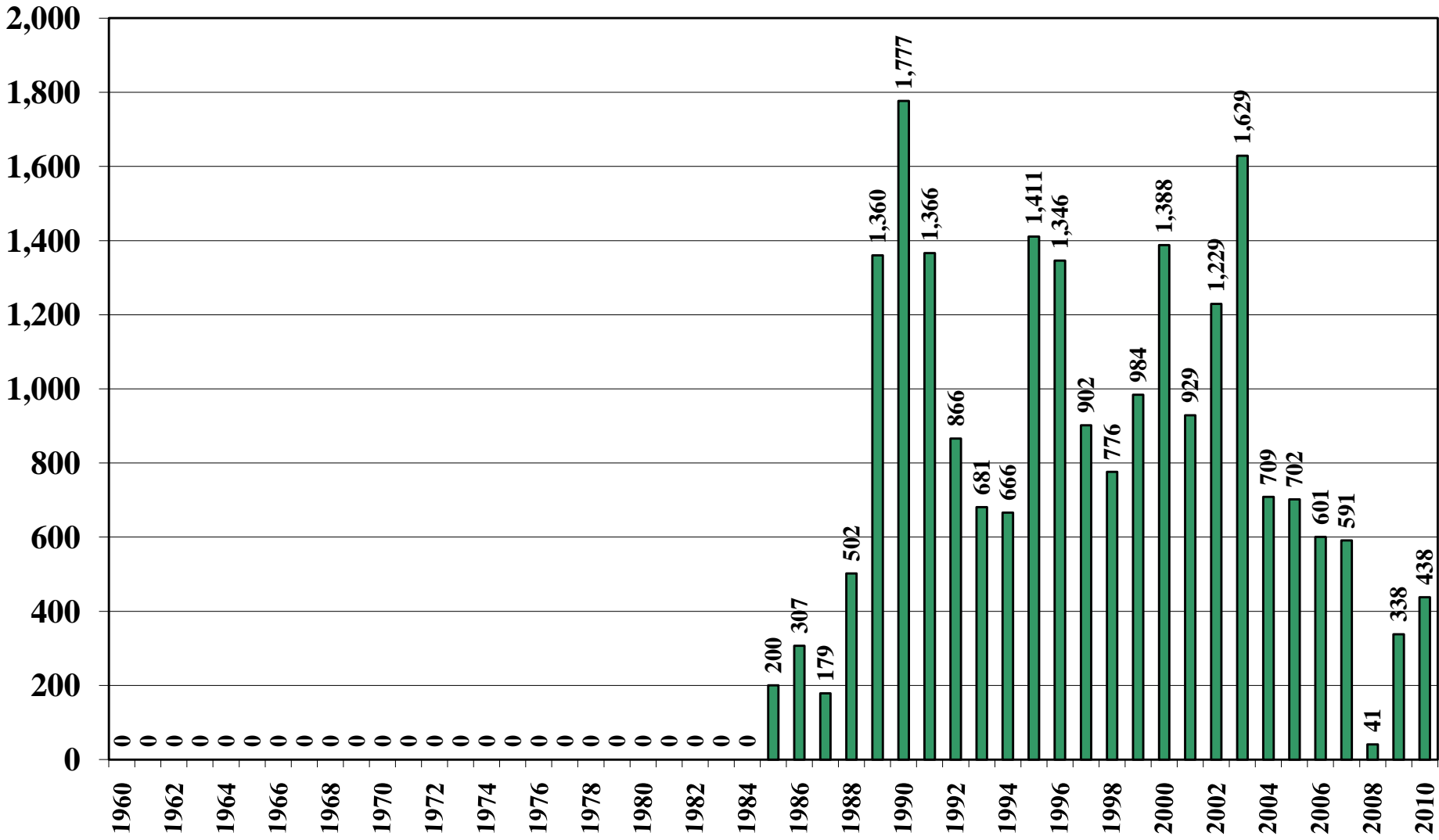
Source: [USDA Foreign Agricultural Service](#)

Union of Burma Rice Total Distribution (1,000 Metric Tons) 1960/61 – 2010/11



Source: [USDA Foreign Agricultural Service](#)

Union of Burma Rice Ending Stocks (1,000 Metric Tons) 1960/61 – 2010/11



Source: [USDA Foreign Agricultural Service](#)