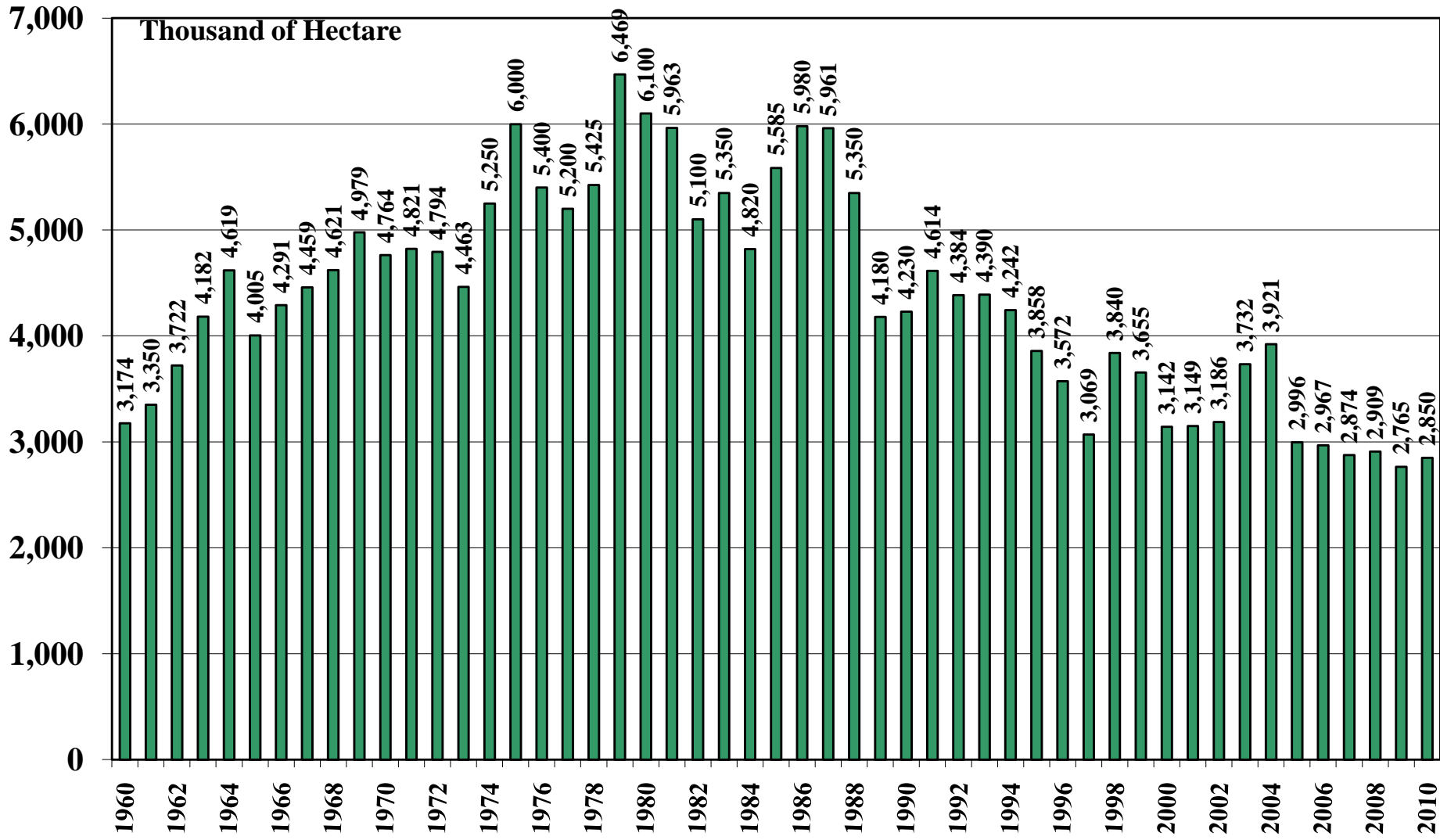


**Brazil**

**USDA Supply and Demand Estimates**

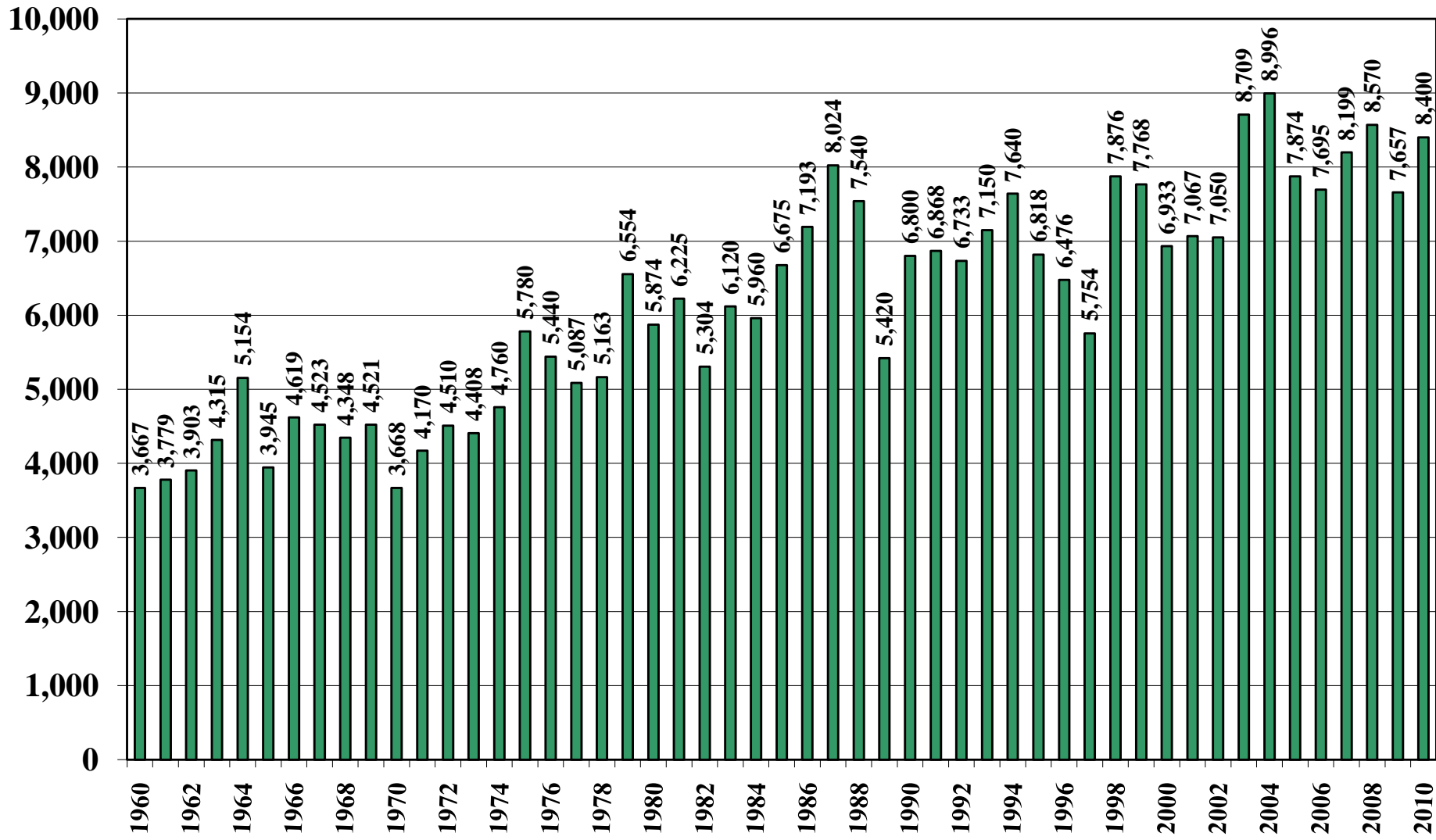
**October 15, 2010**

# Brazil Rice Acreage Harvested 1960/61 – 2010/11



Source: [USDA Foreign Agricultural Service](#)

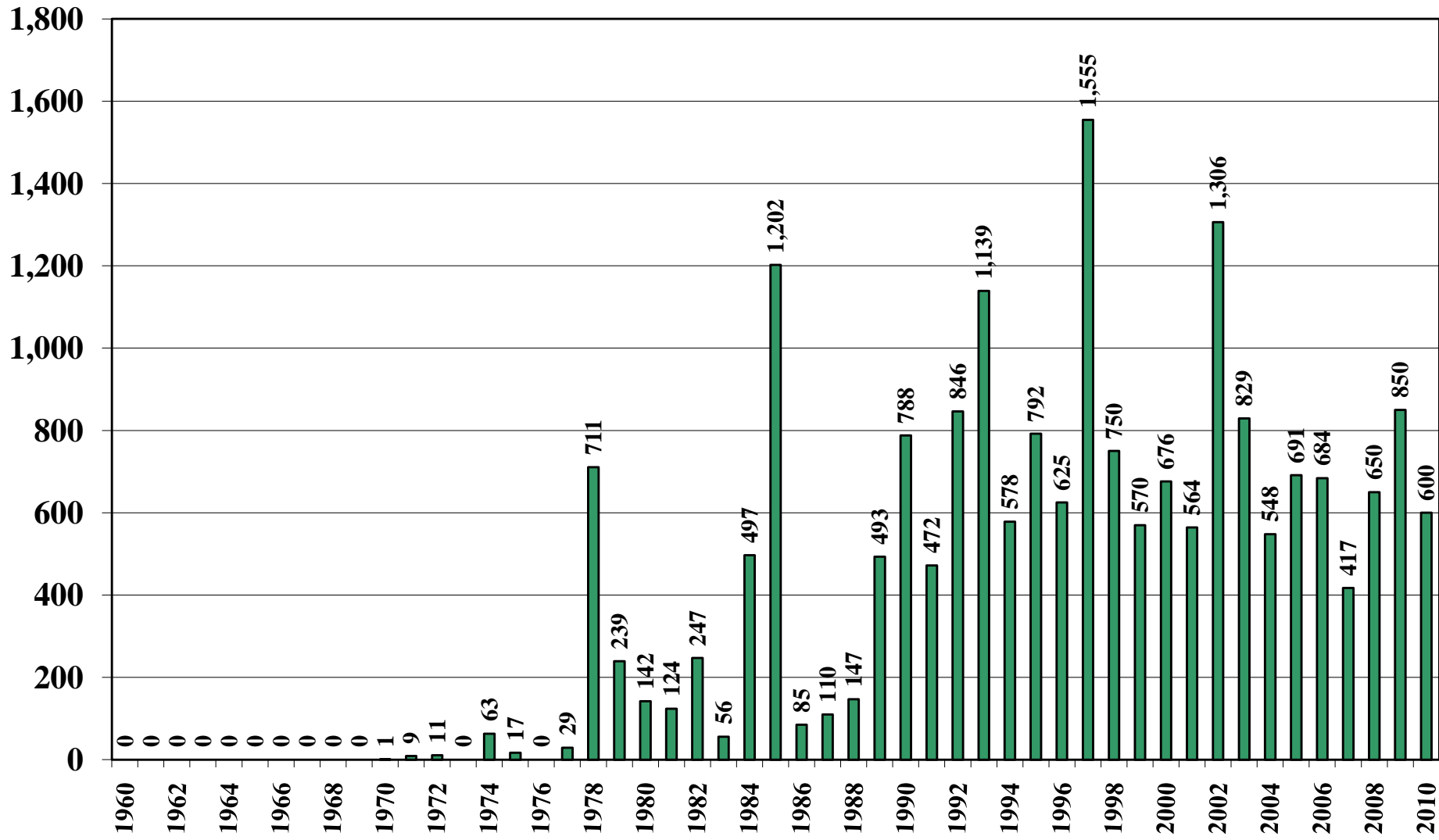
# Brazil Rice Milled Production (1,000 Metric Tons) 1960/61 – 2010/11



Source: [USDA Foreign Agricultural Service](#)

October 15, 2010

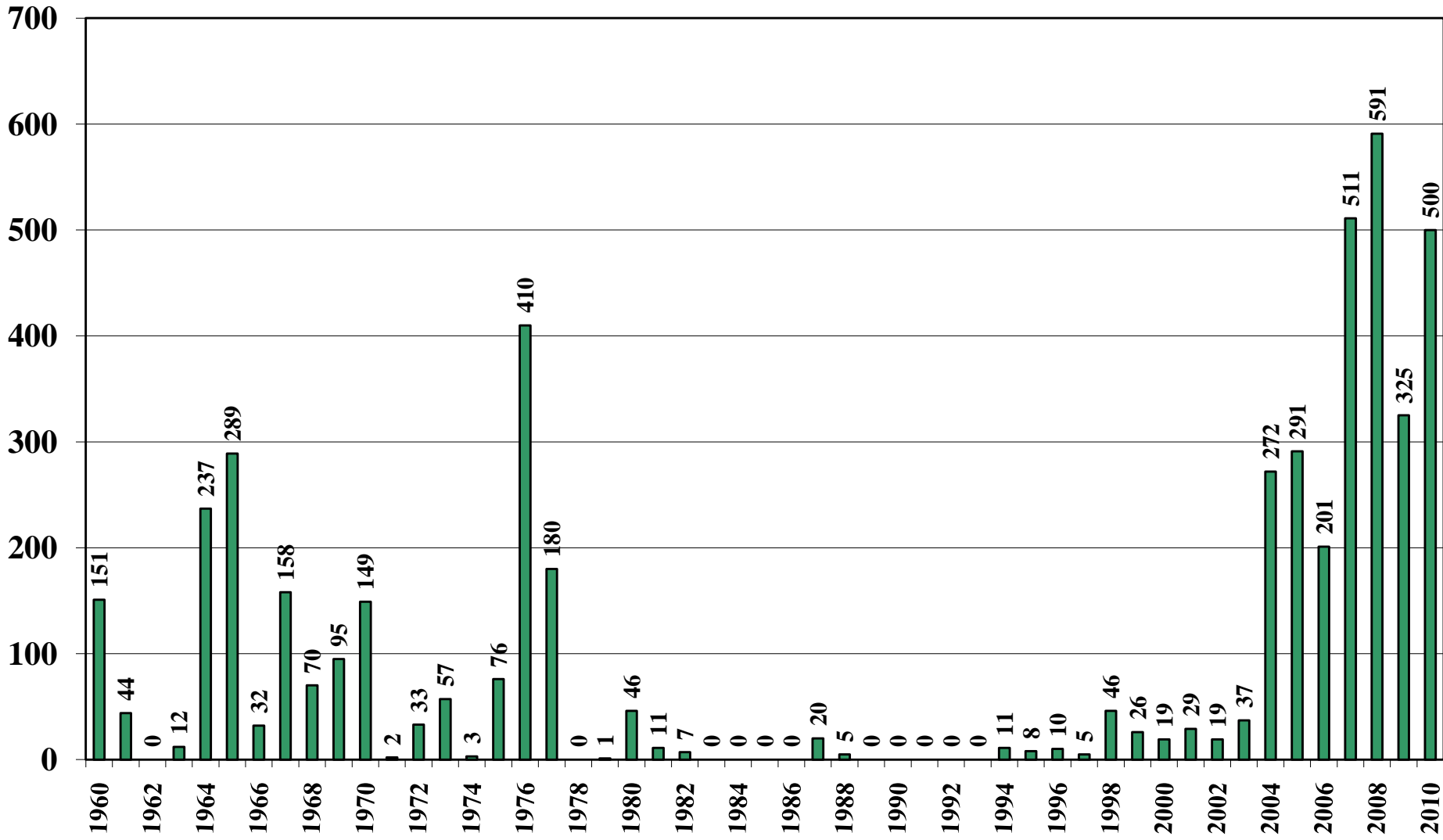
# Brazil Rice Jan-Dec Imports (1,000 Metric Tons) 1960/61 – 2010/11



Source: [USDA Foreign Agricultural Service](#)

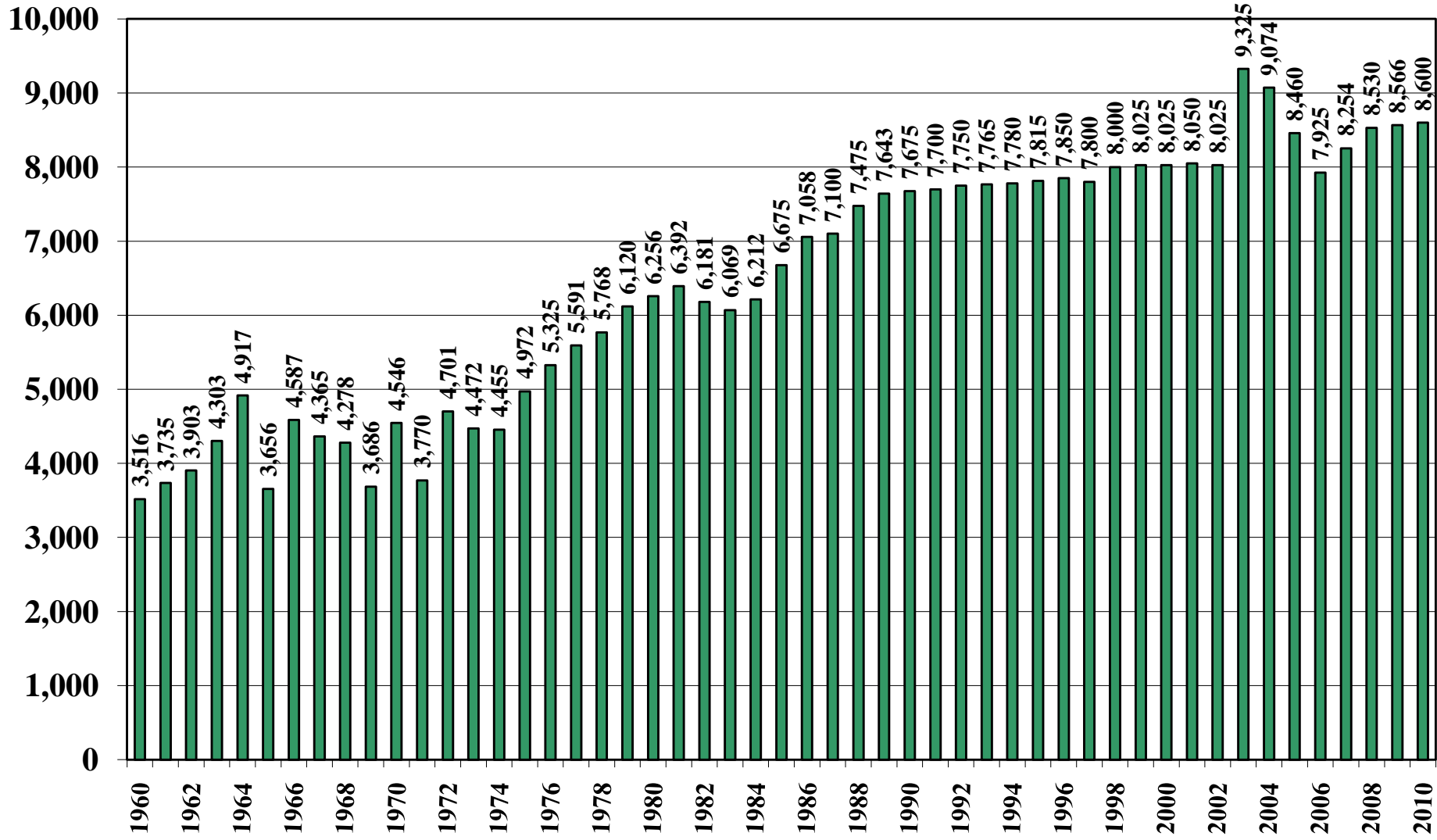
October 15, 2010

# Brazil Rice Jan-Dec Exports (1,000 Metric Tons) 1960/61 – 2010/11



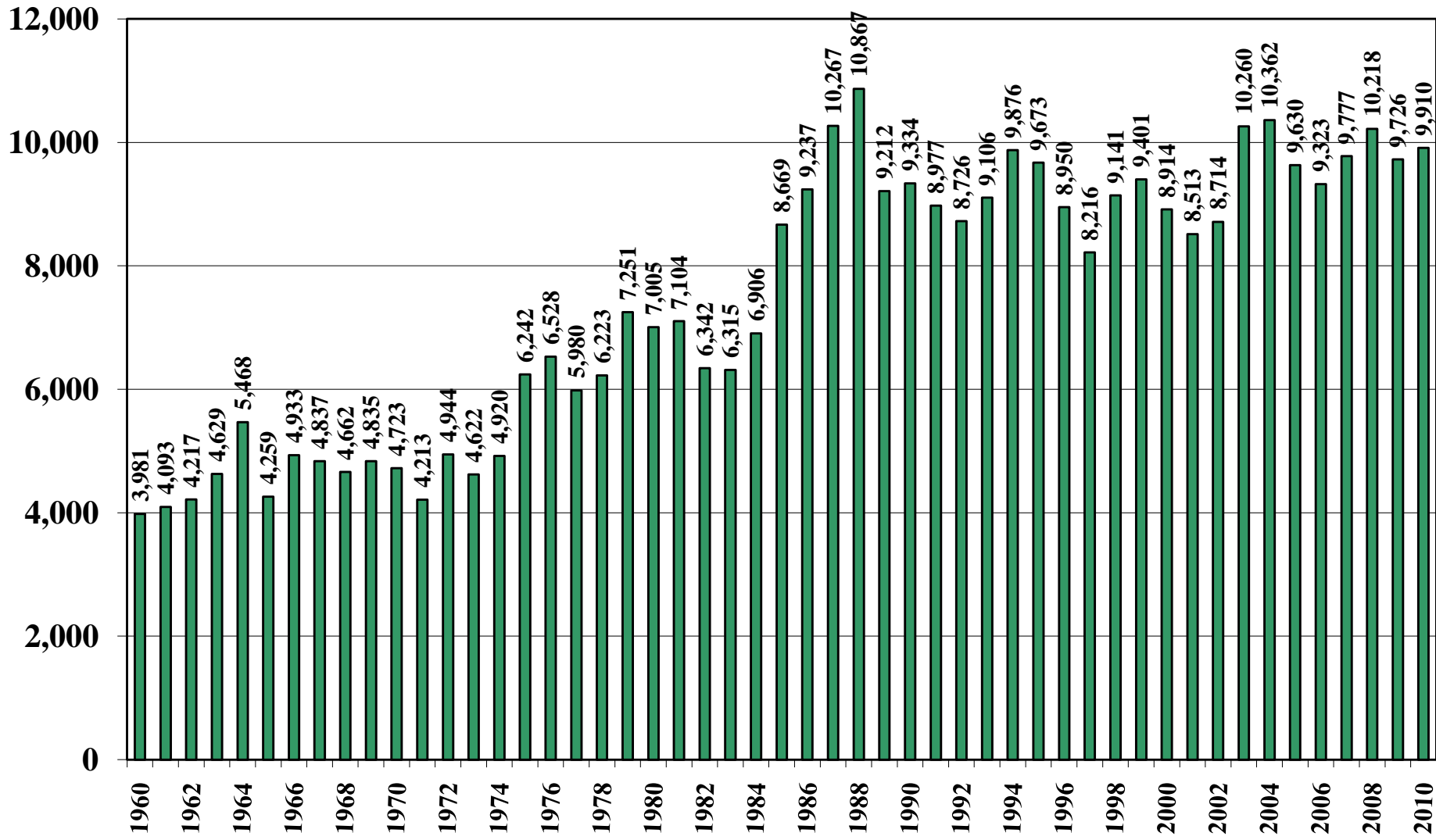
Source: [USDA Foreign Agricultural Service](#)

# Brazil Rice Total Domestic Consumption (1,000 Metric Tons) 1960/61 – 2010/11



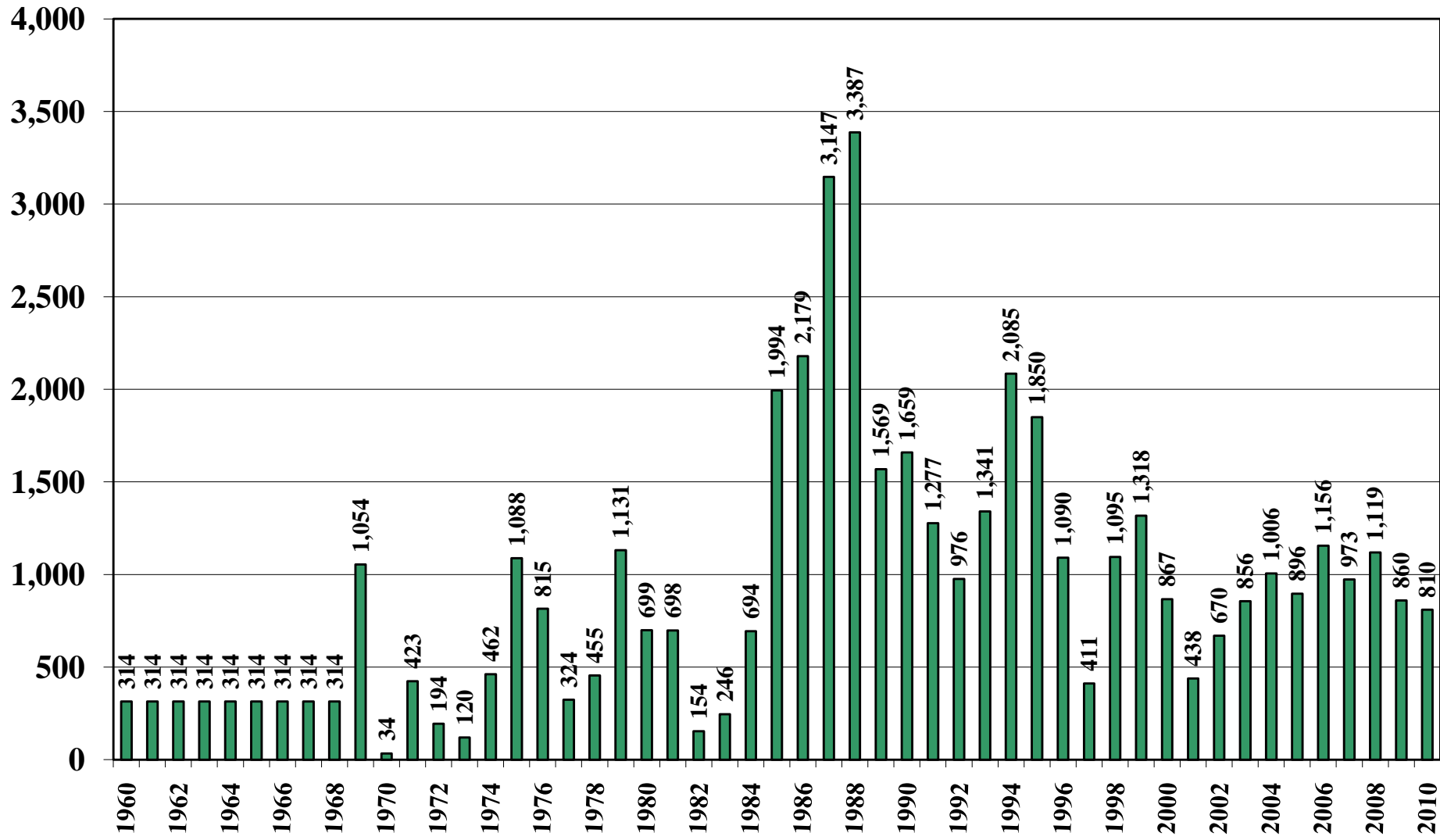
Source: [USDA Foreign Agricultural Service](#)

# Brazil Rice Total Distribution (1,000 Metric Tons) 1960/61 – 2010/11



Source: [USDA Foreign Agricultural Service](#)

# Brazil Rice Ending Stocks (1,000 Metric Tons) 1960/61 – 2010/11



Source: [USDA Foreign Agricultural Service](#)

October 15, 2010