

Rice Graphics and Commentary

March 31, 2005

By

Bobby Coats

Extension Agricultural Policy Analyst

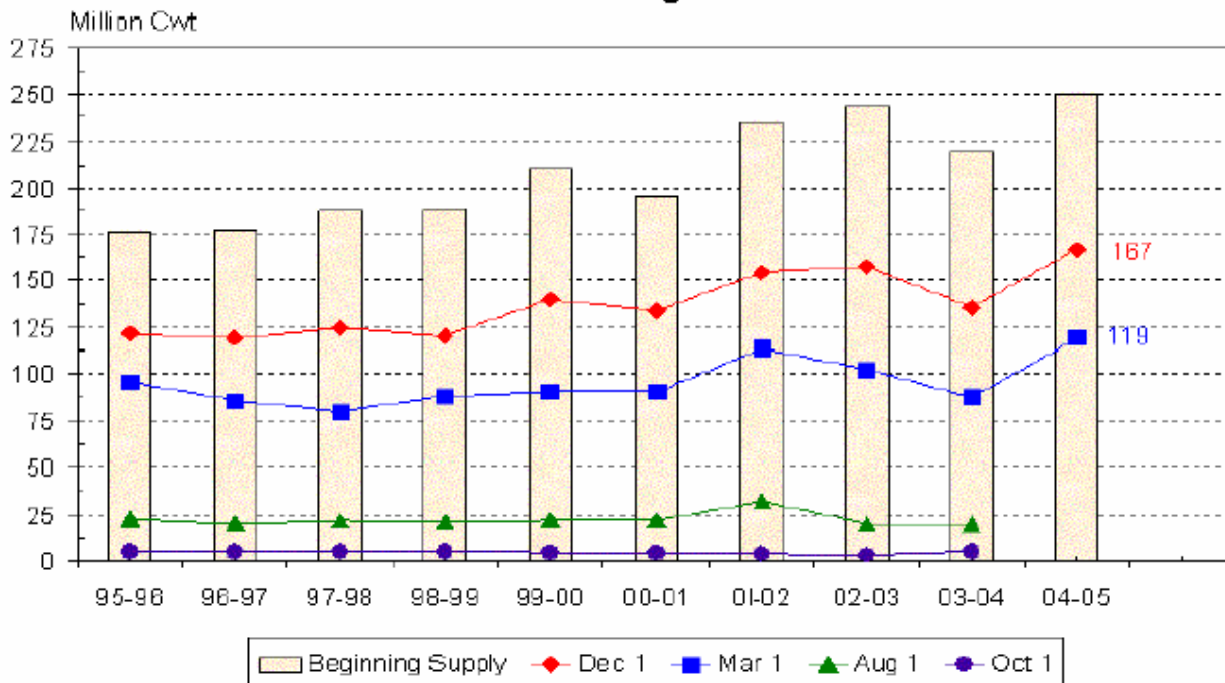
University of Arkansas Cooperative Extension Service

USDA’s 2005 Prospective Planting Report had no real U.S. rice planting surprises. Rice prospective plantings are realistic given the crop’s cash flow potential, available land and water resources, long grain yield potential and the current farm government program. 2005 total U.S. rice planted acreage is estimated to be up slightly at 3.358 million acres. Total U.S. long grain planted acreage is estimated to be up 4%, while medium grain acreage is projected to be down 11%. Mississippi rice producers current intentions are to increase their long grain planted acreage by 11%, followed by Missouri’s 5% increase, Arkansas’ 4% increase, and Louisiana’s 3% increase, while Texas rice producers are currently indicating a 5% decline in their long grain planted acres. Arkansas rice producers indicate that they intend to increase their long grain rice acreage by 55,000 acres to 1.46 million acres, which is a primary function of new high yielding rice varieties. Arkansas’ medium grain rice planting intentions is presently estimated at 110,000 acres down 45,000 acres from last year’s 155,000 acres, this reduction is a function of declining commercial demand for southern medium grain rice.

USDA’s March 31, 2005 Rice Stocks Report though not surprising was sobering. The report indicates that rough rice stocks in all positions on March 1, 2005, totaled 119 million cwt, up 35 percent from the total on March 1, 2004. Stocks held on farms totaled 37.6 million cwt, and off farm stocks totaled 81.2 million cwt. Long grain varieties accounted for 67 percent of the total rough rice, medium grain accounted for 31 percent, and short grain varieties accounted for 2 percent.

Sources: [USDA NASS Prospective Plantings](#), [USDA NASS Rice Stocks](#), and [USDA NASS Data Set](#)

United States All Rough Rice Stocks



U.S. All Rice Planted Acres (thousands)

	AR	CA	LA	MS	MO	TX
1996	1180	502	535	210	97	300
1997	1400	518	585	240	122	260
1998	1500	460	625	270	145	285
1999	1630	510	620	325	186	260
2000	1420	550	485	220	170	215
2001	1631	473	548	255	211	216
2002	1516	533	540	255	190	206
2003	1466	509	455	235	176	181
2004	1561	595	538	235	196	222
2005	1571	560	550	260	206	211

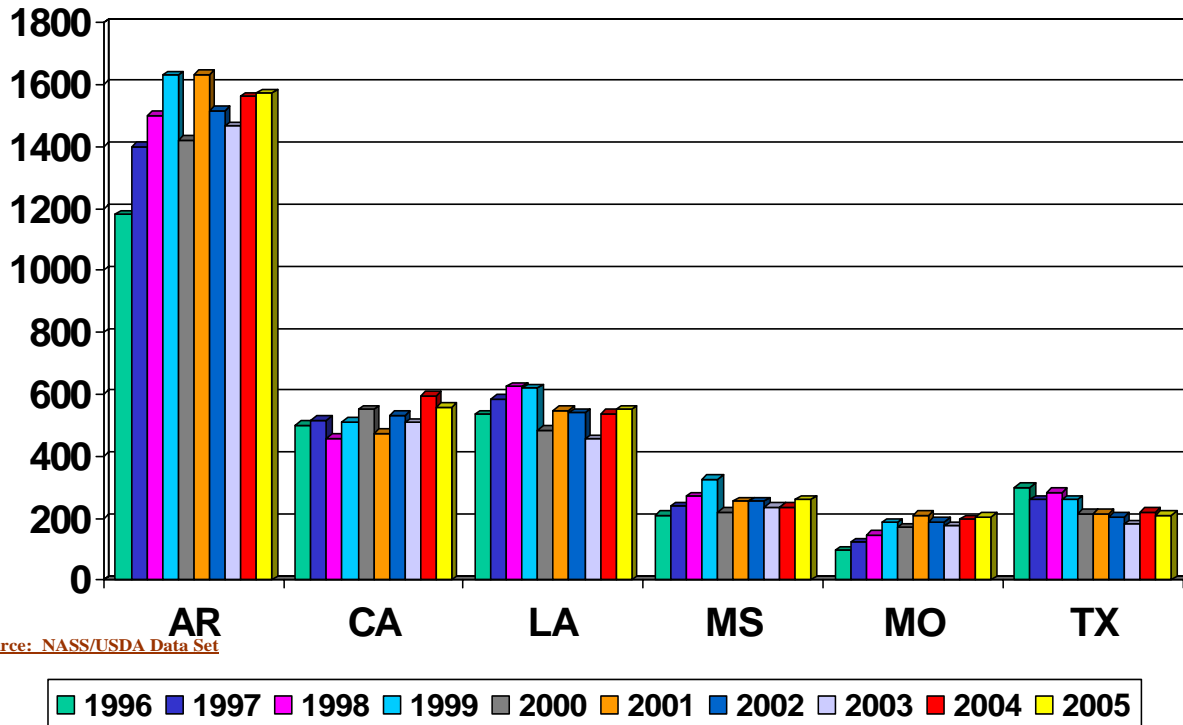
U.S. Long Grain Rice Planted Acres (thousands)

	AR	CA	LA	MS	MO	TX
1996	918	5	465	210	95	290
1997	1168	9	535	240	120	255
1998	1293	9	595	270	142	280
1999	1378	5	585	325	184	254
2000	1138	9	460	220	169	210
2001	1480	13	540	255	210	215
2002	1350	7	530	255	190	205
2003	1300	7	435	235	175	180
2004	1405	7	525	235	195	220
2005	1460	6	540	260	205	210

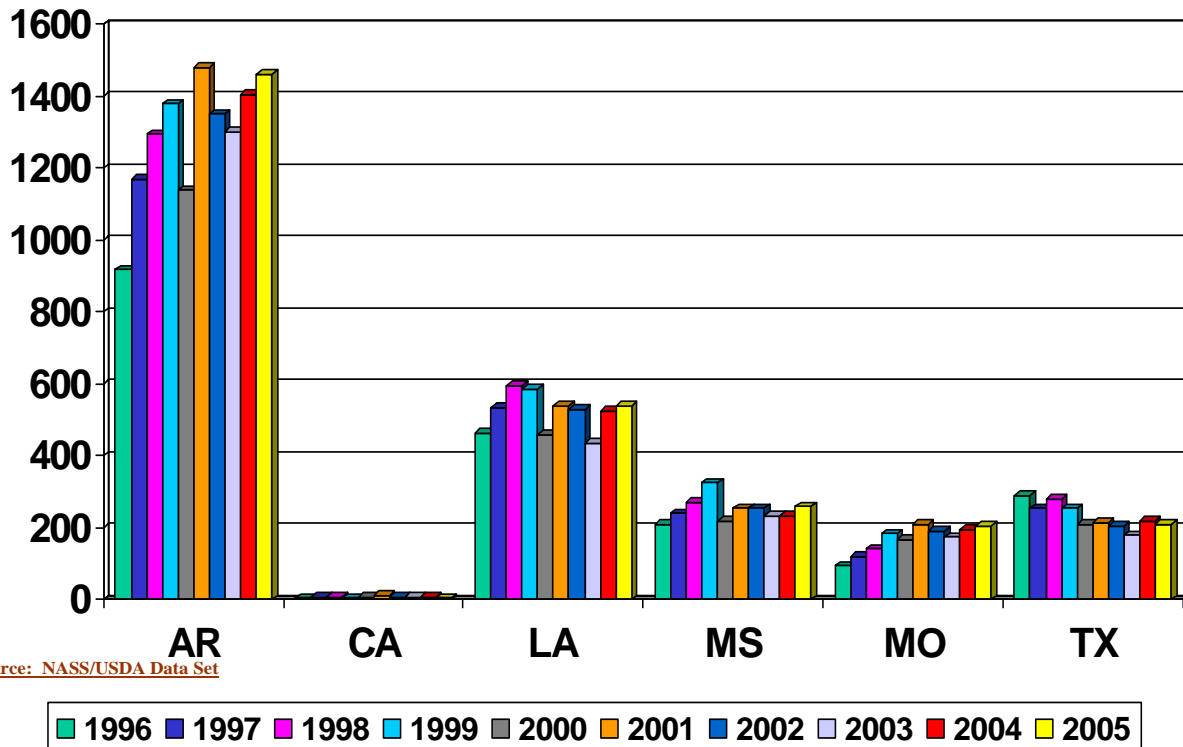
U.S. Medium Grain Rice Planted Acres (thousands)

	AR	CA	LA	MS	MO	TX
1996	260	484	70	0	2	10
1997	230	493	50	0	2	5
1998	205	420	30	0	3	5
1999	250	455	35	0	2	6
2000	280	507	25	0	1	5
2001	150	435	8	0	1	1
2002	165	500	10	0	0	1
2003	165	460	20	0	1	1
2004	155	540	13	0	1	2
2005	110	510	10	0	1	1

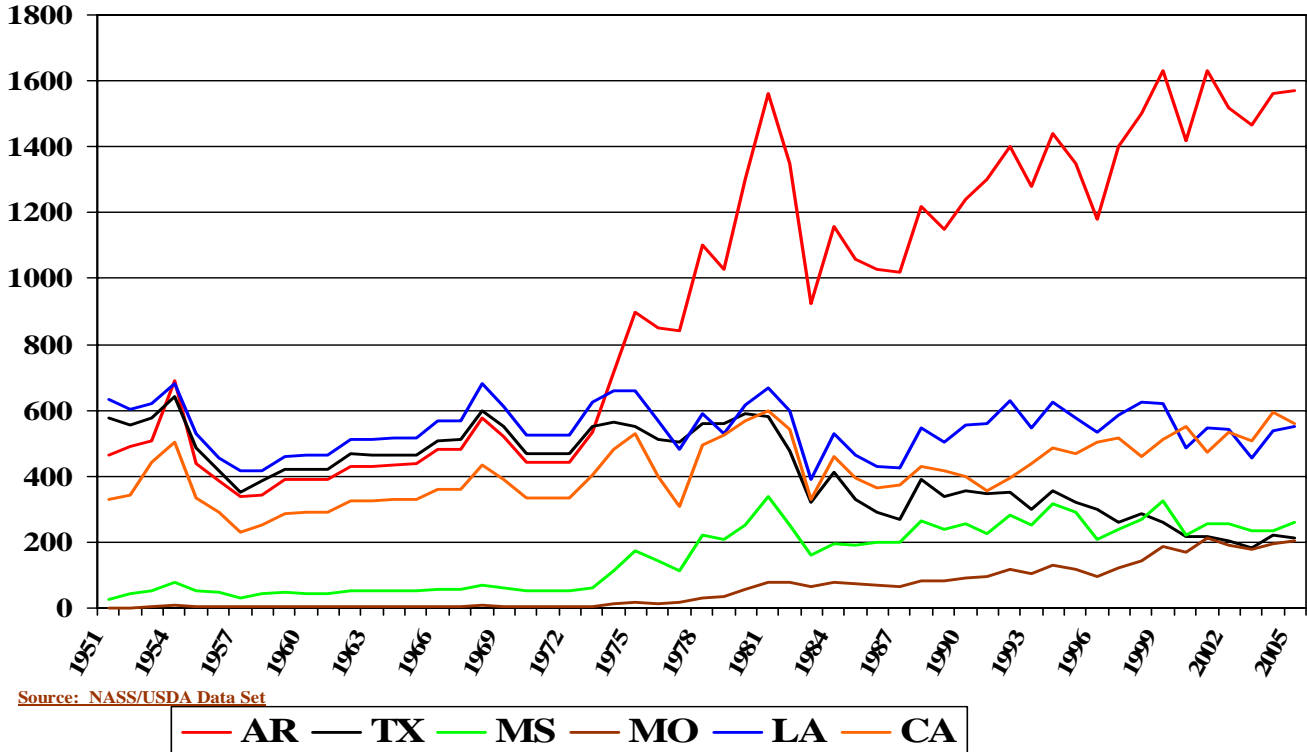
U.S. All Rice Planted By State 1996-2004 and 2005 Prospective Planting, Thousand Acres



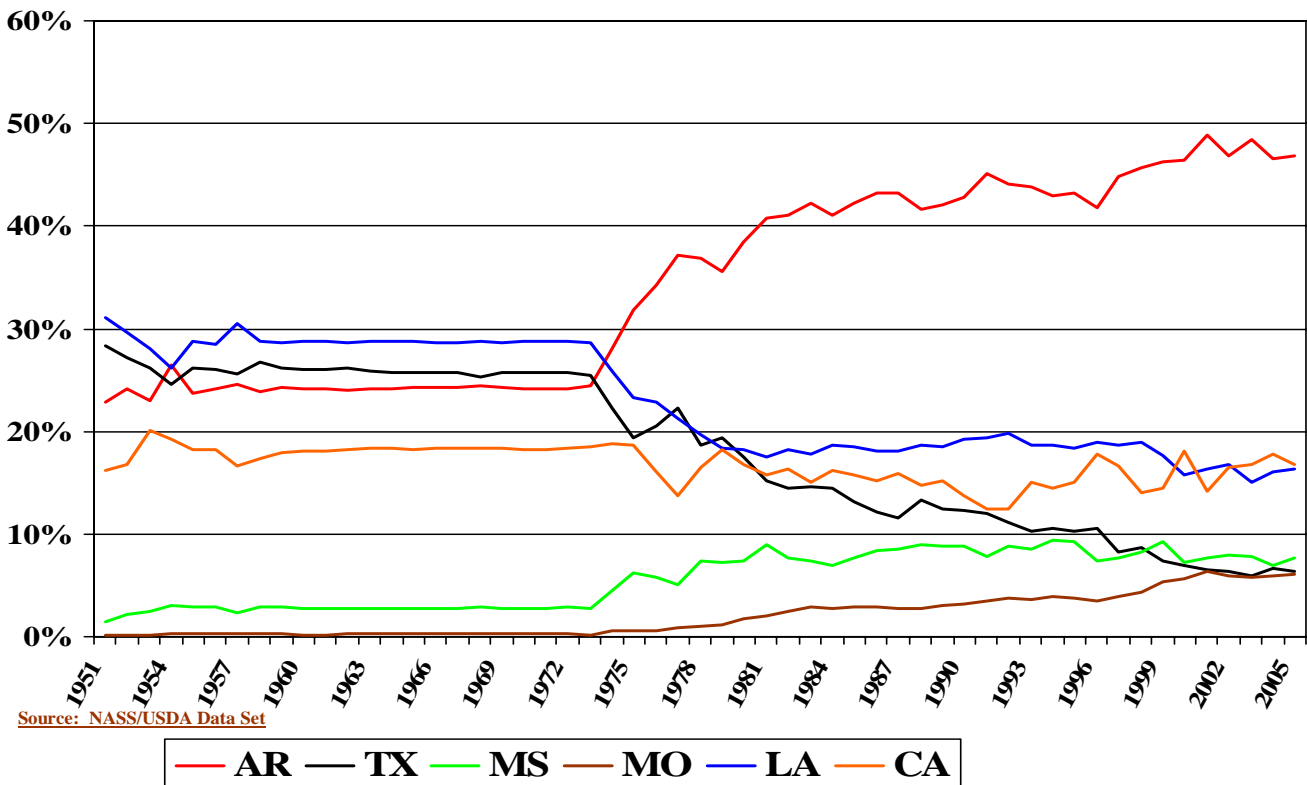
U.S. Long Grain Rice Planted By State 1996-2004 and 2005 Prospective Planting, Thousand Acres



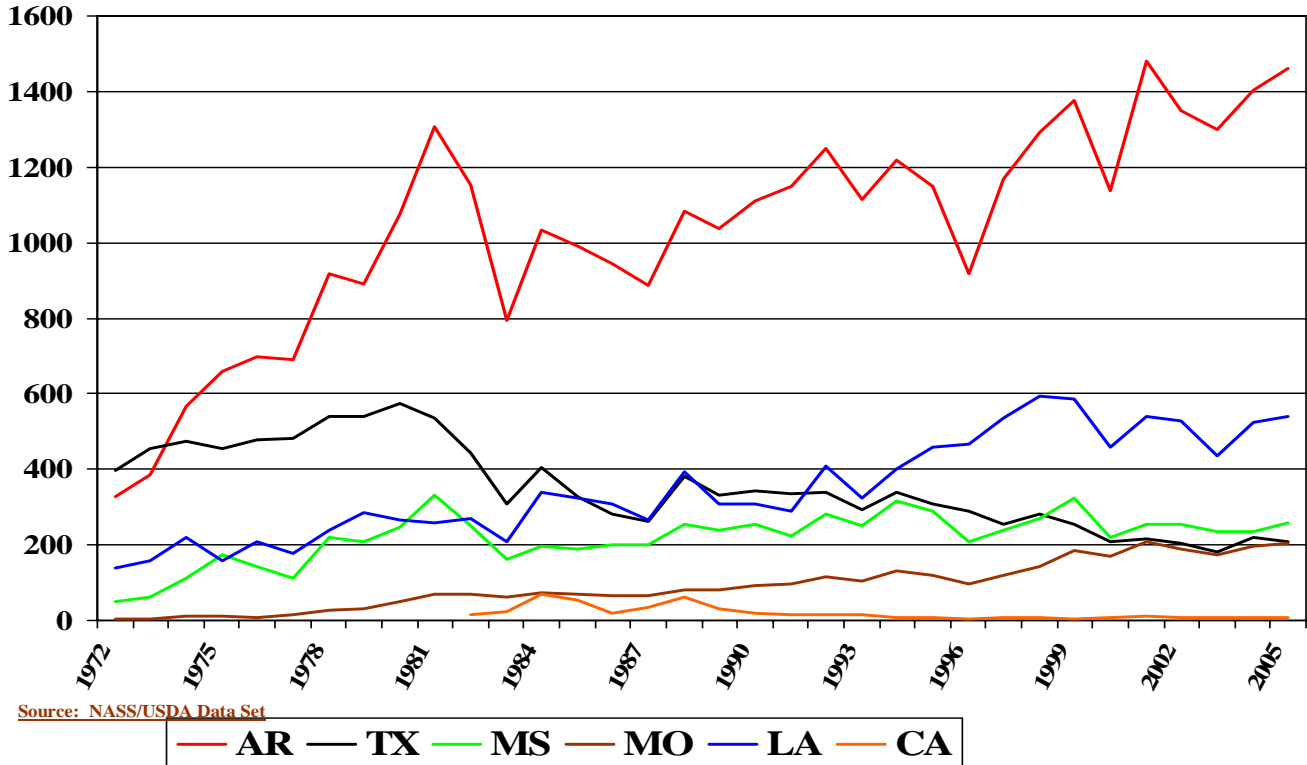
U.S. All Rice Planted By State 1951-2004 and 2005 Prospective Planting, Thousand Acres



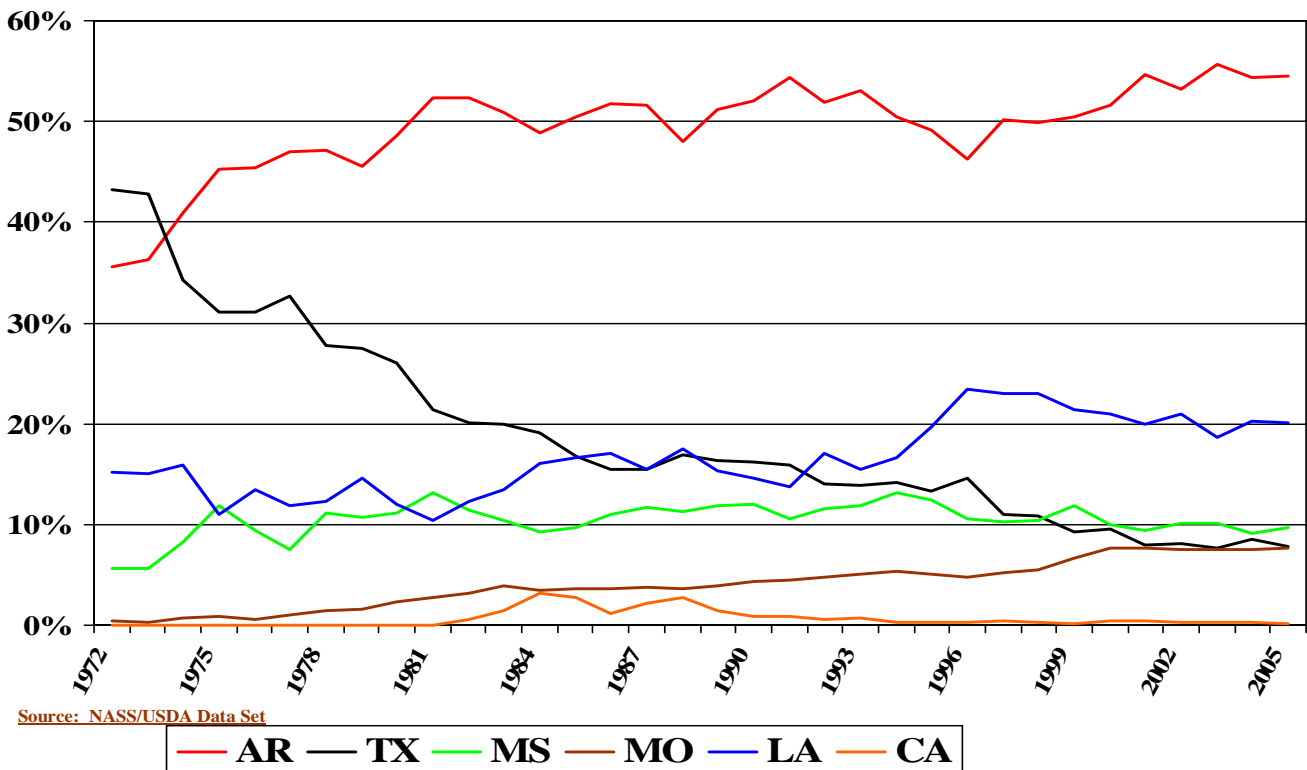
U.S. All Rice Planted By State 1951-2004 and 2005 Prospective Planting, Percent of United States



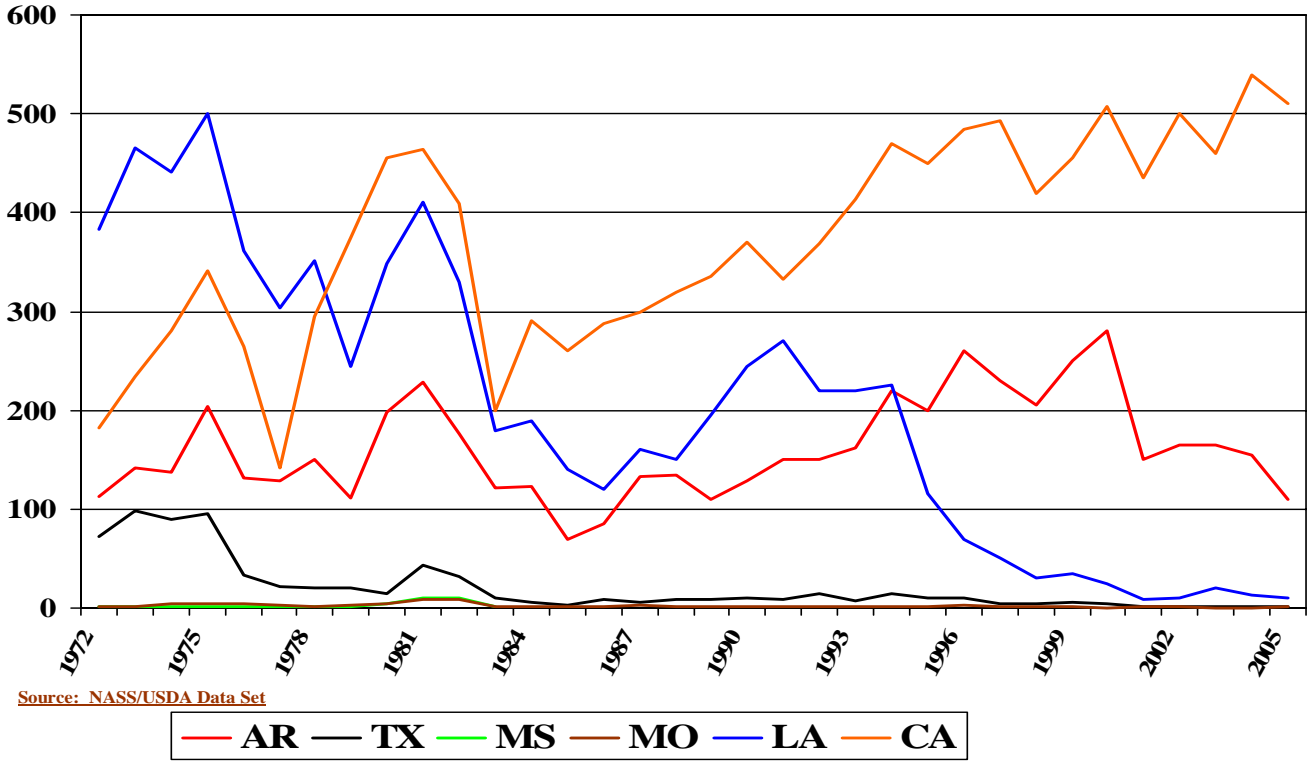
U.S. Long Grain Rice Planted By State 1951-2004 and 2005 Prospective Planting, Thousand Acres



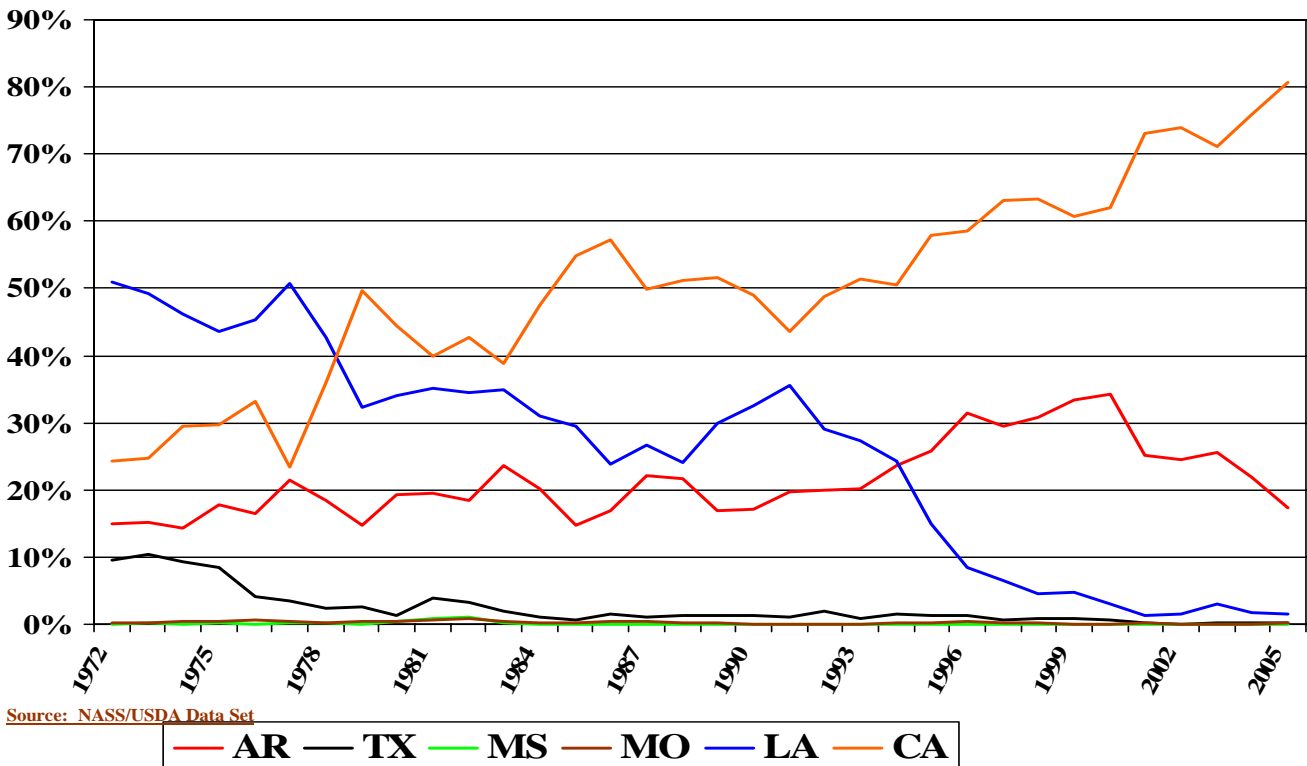
U.S. Long Grain Rice Planted By State 1951-2004 and 2005 Prospective Planting, Percent of United States



U.S. Medium Grain Rice Planted By State 1951-2004 and 2005 Prospective Planting, Thousand Acres



U.S. Medium Grain Rice Planted by State 1951-2004 and 2005 Prospective Planting, Percent of United States



U.S. Short Grain Rice Planted By State 1951-2004 and 2005 Prospective Planting, Thousand Acres

